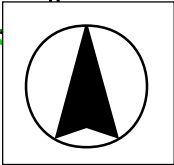


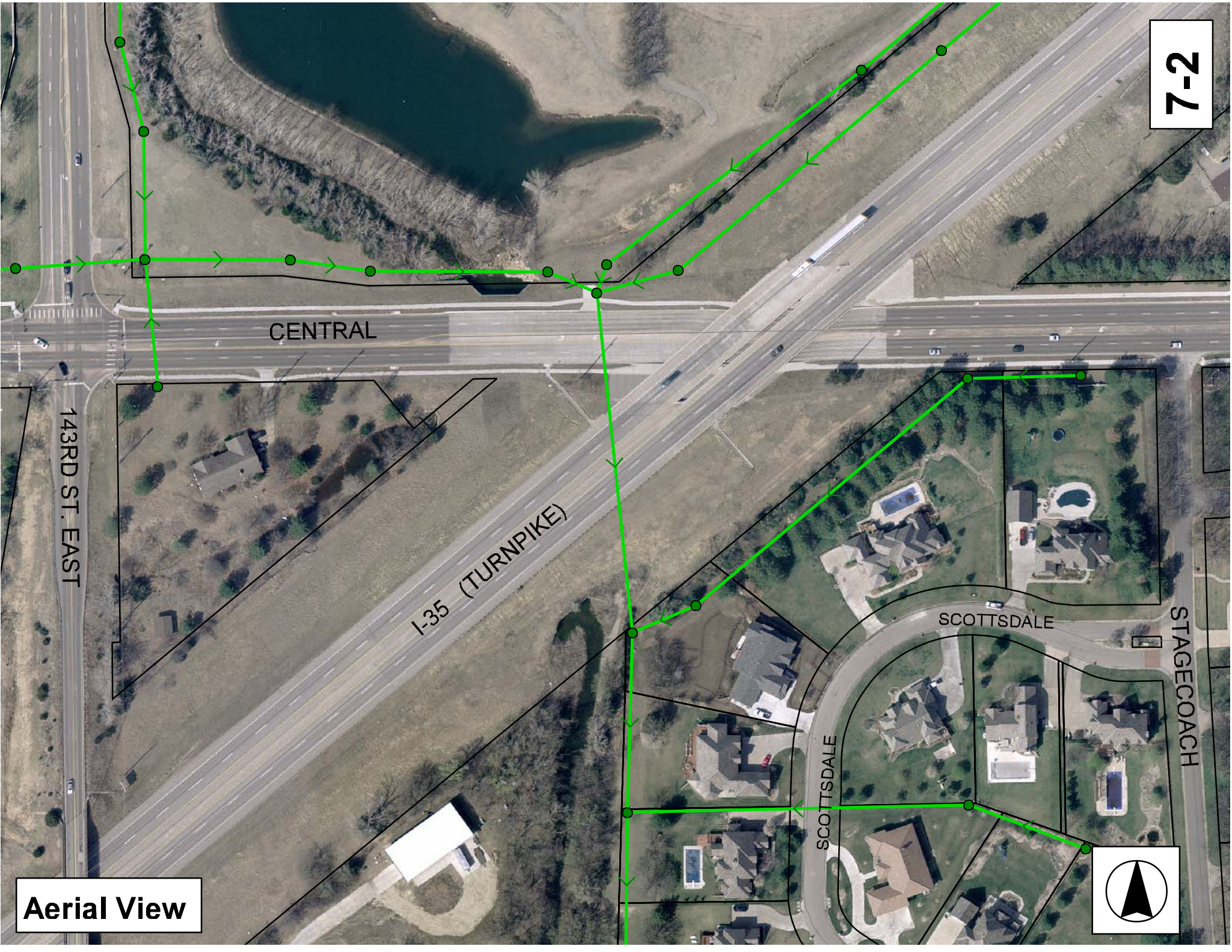
MH # 6448-001
Approx depth = 11.8 ft

Install 398 lf of 20" Cured-in-Place Liner (pipe is ductile iron with a rubber lining that is coming loose at joints) (tv inspection in May, 2007 indicates that the loose lining is pliable, so installation of the tube should press the lining against the pipe, cutting of the lining will not be necessary)

MH # 6447-026
Approx depth = 12.0 ft

SITE 7





CENTRAL

143RD ST. EAST

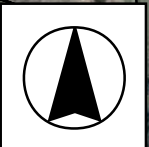
I-35 (TURNPIKE)

SCOTTSDALE

STAGECOACH

SCOTTSDALE

Aerial View



Television Inspection Master Report

5/2/2007
4:01 PM

US Structure: 6448-001
DS Structure: 6447-026

11 N SCOTTSDALE ST

Date Insp: 5/23/2001 Basin:
Dir Televised: Upstream To Downstream

Pipe Information

Shape: Round Length Status: As-Built Drawings Project No.: 4MC-058
Dia/Ht Width: 20 Material: DIP with lining Index:
Length: 398.2 Slope: 0.251 Surface:
Pipe Sec Length: Comment: "TRUNK B" (4 MILE CREEK SEWER) ++++ Entire segment has 36" RCP casing

Inspection Information

Crew: 694 Percent Full: 35 Tape ID: V-2870
Weather: Sunny Purpose: TV Existing Line Counter Start: 0.00
Surface Cond: Flow: Normal Flow Counter Stop:

Obs. #	VTR Counter	Distance	Location	Description	Rating	Obsrvd (gpm)	Est. (gpm)	Ratings Struct	Clean	Remain (gpm)
1		0.0	US Manhole	6448-001 / north side of Central & west of Turnpike						
2		10.0	Joint	Pipe coating has split open at the joint						
3		28.0	Joint	Pipe coating has split open at the joint						
		64.0	Joint	Pipe coating has split open at the joint						
4		100.0	Joint	Pipe coating has split open at the joint						
5		100.0	Invert	35% FLOW						
6		106.0	Invert	40% FLOW						
7		112.0	Invert	45% FLOW						
8		119.0	Invert	50% FLOW						
		119.0	Joint	Pipe coating has split open at the joint						
9		122.0	Camera Lens Submerged							
10		143.0	Camera Lens Emerged							
11		153.0	Invert	35% FLOW						
		154.0	Joint	Pipe coating has split open at the joint						
13		171.0	Joint	Pipe coating has split open at the joint						
14		188.0	Joint	Pipe coating has split open at the joint						
15		207.0	Invert	25% FLOW						
16		207.0	Joint	Pipe coating has split open at the joint						
17		225.0	Joint	Pipe coating has split open at the joint						
19		243.0	Joint	Pipe coating has split open at the joint						
20		262.0	Joint	Pipe coating has split open at the joint						
21		280.0	Joint	Pipe coating has split open at the joint						
22		298.0	Joint	Pipe coating has split open at the joint						
23		316.0	Joint	Pipe coating has split open at the joint						
24		329.0	Invert	20% FLOW						
25		334.0	Joint	Pipe coating has split open at the joint						
27		370.0	Joint	Pipe coating has split open at the joint						
29		388.0	Joint	Pipe coating has split open at the joint						
30		398.0	DS Manhole	6447-026						

NOTE: TV inspection in May of 2007 indicates that the loose lining is pliable, not hardened.

7-3