

**BENCHMARKS:**  
 BM #1 "L" Cut on Top of Curb, North Side Siefkes, NW of Center Line of Siefkes Ct., Shadybrook Meadow Addition.  
 Elev. = 135.19 City Datum

BM #2 "Q" Cut on SW corner of concrete base of SWB box 156 north and 41.5' west of E 1/4 Sec. 23, T-27-S, R-2-E.  
 Elev. = 143.39 City Datum

BM #3 "Q" Cut on concrete base of R/W fence brace post 510' NE of SW corner of Shoal Creek Addition. (South side of Turnpike).  
 Elev. = 154.13 City Datum

Install 16 S.Y. of Light Stone Rip-Rap as Indicated.

Sta. 0+00, Line 2 Begin Construction of 18" R.C.P. w/ End Section.

Encase sanitary sewer with 10 L.F. concrete encasement.

**CAUTION!**  
 8" San. Sewer Crossing

Sta. 0+94.1, Line 2 Const. Std. Type-1 Single Curb Inlet. (5' x 3')  
 Top Elev. = 146.00

**SHOAL CREEK ADDITION**

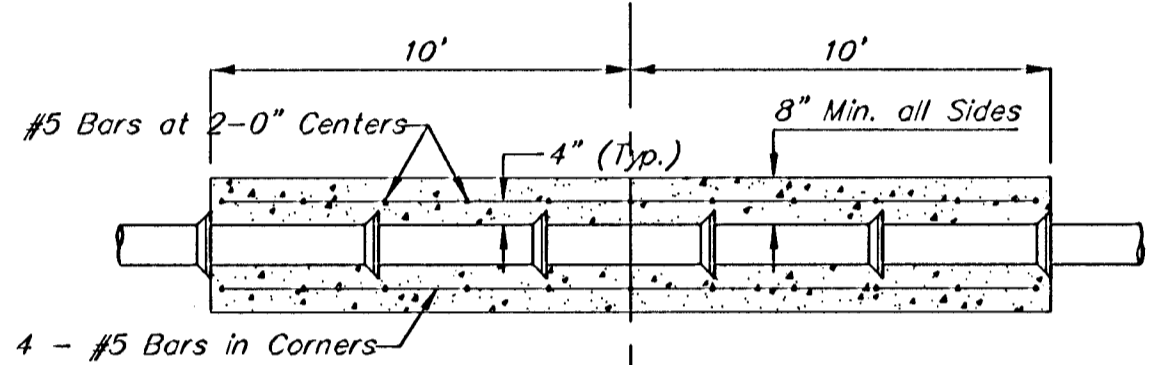
**CAUTION!**  
 4" San. Sewer Crossing

Future 8" Wtr. Line Crossing

Sta. 3+76.2, End Line 2 Const. Special Yard Inlet.  
 Top Elev. = 146.90

Sta. 2+83.2, Line 2 Const. Std. Type-1A Single Curb Inlet. (5' x 3')  
 Top Elev. = 148.60

Construct Erosion Control Straw Bale Barrier Around Inlet. See Detail, Sheet 2.



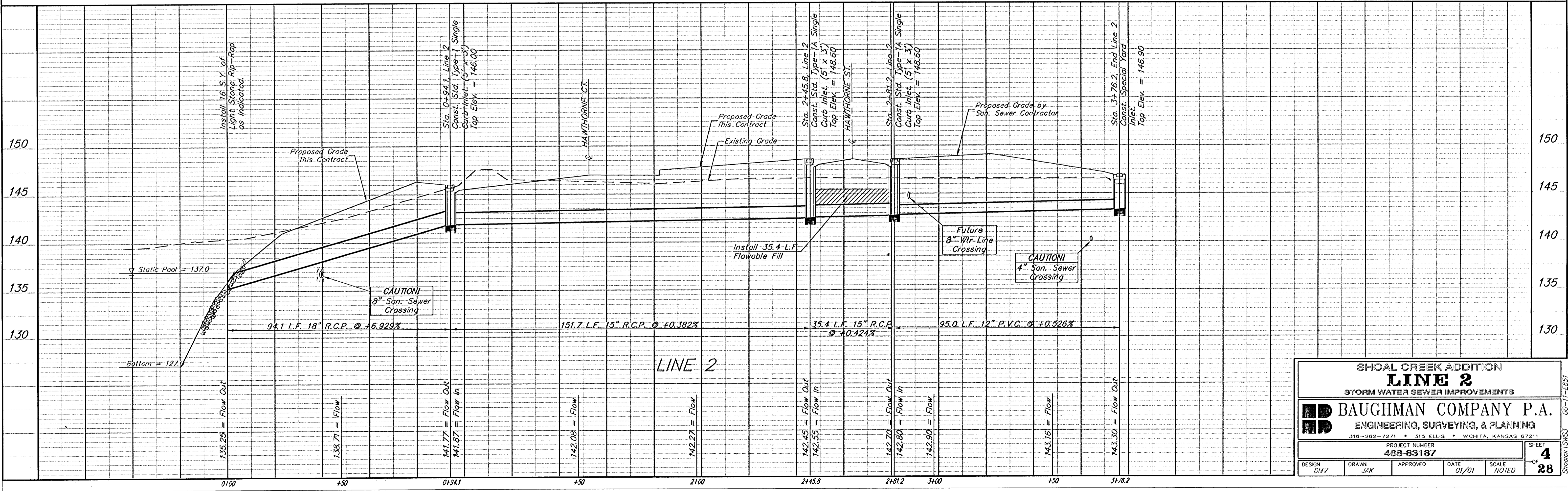
REINFORCED CONCRETE ENCASMENT OF SANITARY SEWERS

SCALE:  
 1" = 20' HORIZONTAL  
 1" = 5' VERTICAL  
 • = IRON

**SHOAL CREEK ADDITION**

Sta. 2+45.8, Line 2 Const. Std. Type-1A Single Curb Inlet. (5' x 3')  
 Top Elev. = 148.60

Sta. 2+45.6 to Sta. 2+81.0 Install 35.4 L.F. Flowable Fill Per City Specifications.  
 Fill to Elev. 145.40



<b>SHOAL CREEK ADDITION</b>			
<b>LINE 2</b>			
STORM WATER SEWER IMPROVEMENTS			
<b>BAUGHMAN COMPANY P.A.</b>			
ENGINEERING, SURVEYING, & PLANNING			
318-282-7271 • 315 ELLIS • WICHITA, KANSAS 67211			
PROJECT NUMBER <b>488-83187</b>		SHEET <b>4</b>	
DESIGN DMV	DRAWN JMK	APPROVED	DATE 01/01
		SCALE NOTED	<b>28</b>