

**BENCHMARKS:**  
 BM #1 "□" Cut on Top of Curb, North Side Siefkes, NW of Center Line of Siefkes Ct., Shadybrook Meadow Addition.  
 Elev. = 135.19 City Datum

BM #2 "□" Cut on SW corner of concrete base of SWB box 156' north and 41.5' west of E 1/4 Sec. 23, T-27-S, R-2-E.  
 Elev. = 143.39 City Datum

BM #3 "□" Cut on concrete base of R/W fence brace post 510' NE of SW corner of Shoal Creek Addition. (South side of Turnpike).  
 Elev. = 154.13 City Datum

Sta. 0+25.6 to Sta. 0+86.9  
 Install 61.3 L.F. Flowable Fill Per City Specifications.  
 Fill to Elev. 137.50

Install 20 S.Y. of Light Stone Rip-Rap as Indicated.

Sta. 0+00, Line 5  
 Begin Construction of 24" R.C.P. w/ End Section.

Sta. 0+86.9, Line 5  
 Const. Std. Type-1A Single Curb Inlet (5' x 3')  
 Top Elev. = 139.10

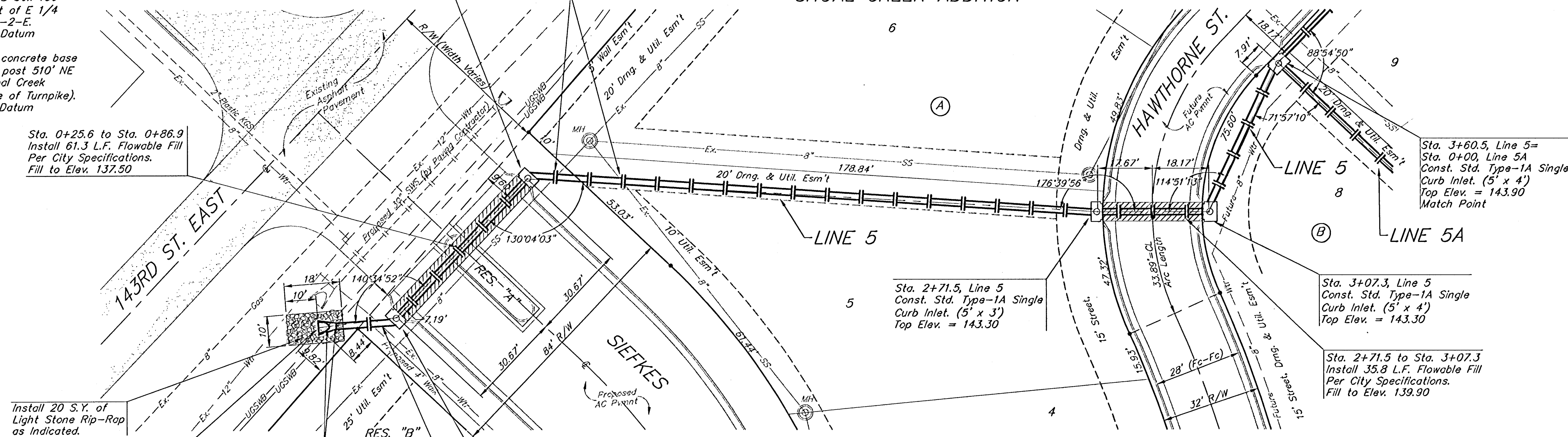
**CAUTION!**  
 8" San. Sewer Crossing

**CAUTION!**  
 U/G SWB Crossing

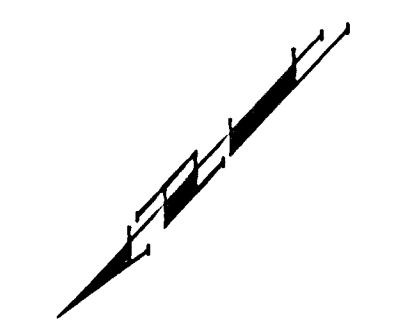
**CAUTION!**  
 8" Wr. Line Crossing

Sta. 0+25.6, Line 5  
 Const. Std. Type-1A Single Curb Inlet (5' x 3')  
 Top Elev. = 139.10

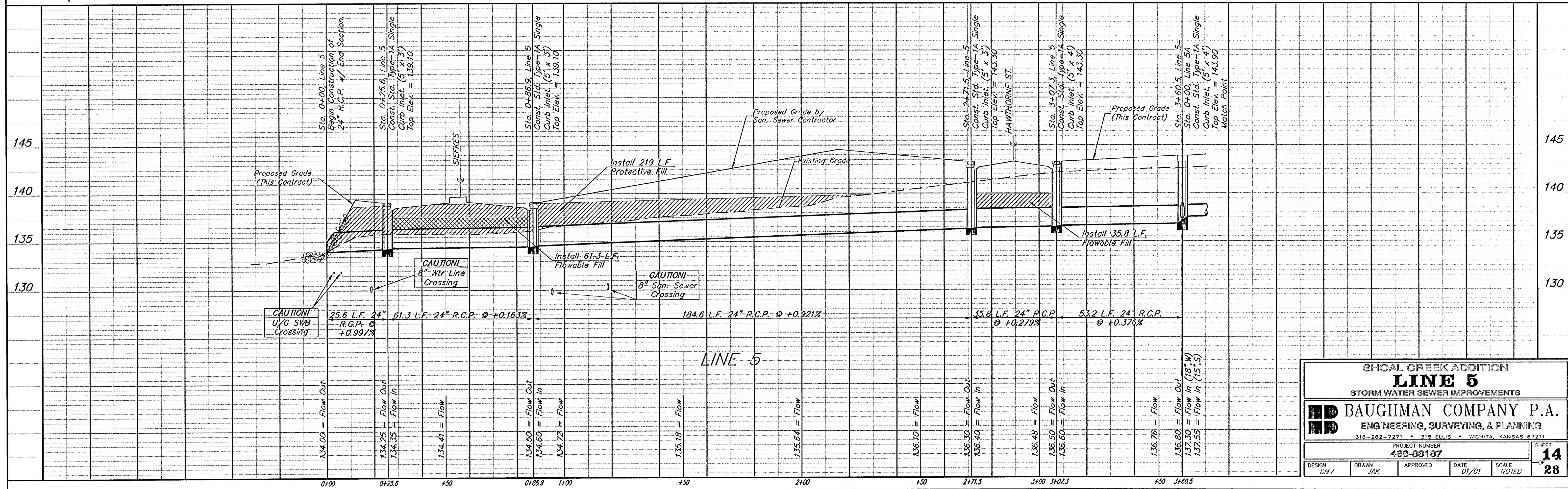
SHOAL CREEK ADDITION



Note: Protective Fill to be Placed and Compacted per City Specs Prior to Storm Sewer Installation.



SCALE:  
 1" = 20' HORIZONTAL  
 1" = 5' VERTICAL  
 ● = IRON



<b>SHOAL CREEK ADDITION</b>			
<b>LINE 5</b>			
STORM WATER SEWER IMPROVEMENTS			
<b>BAUGHMAN COMPANY P.A.</b>			
ENGINEERING, SURVEYING, & PLANNING			
316-282-7271 • 315 ELLIS • WICHITA, KANSAS 67211			
PROJECT NUMBER		SHEET	
480-03187		14	
DESIGN	DRAWN	APPROVED	DATE
DMV	JAK		01/01
SCALE		NOTED	
		28	