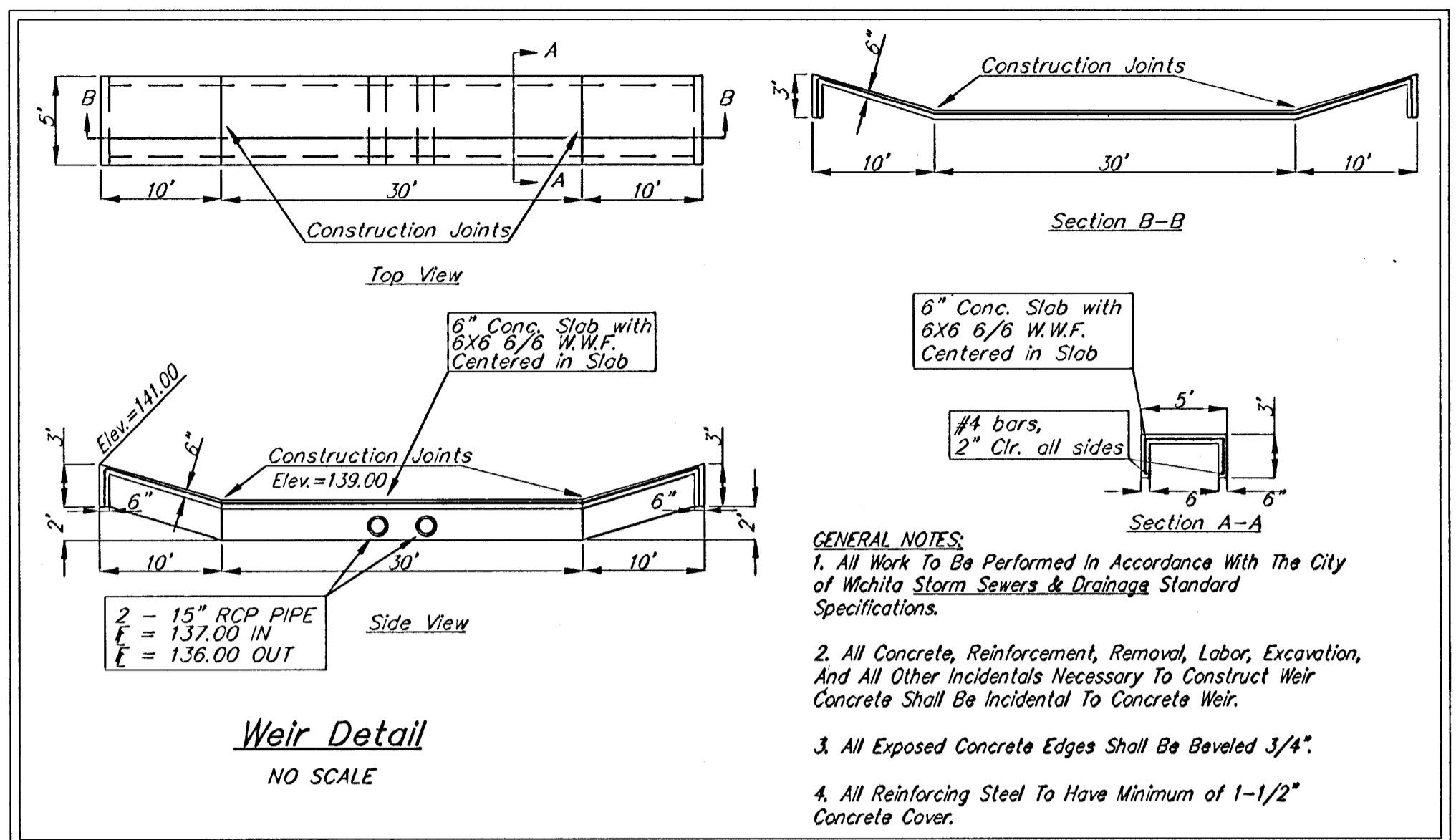
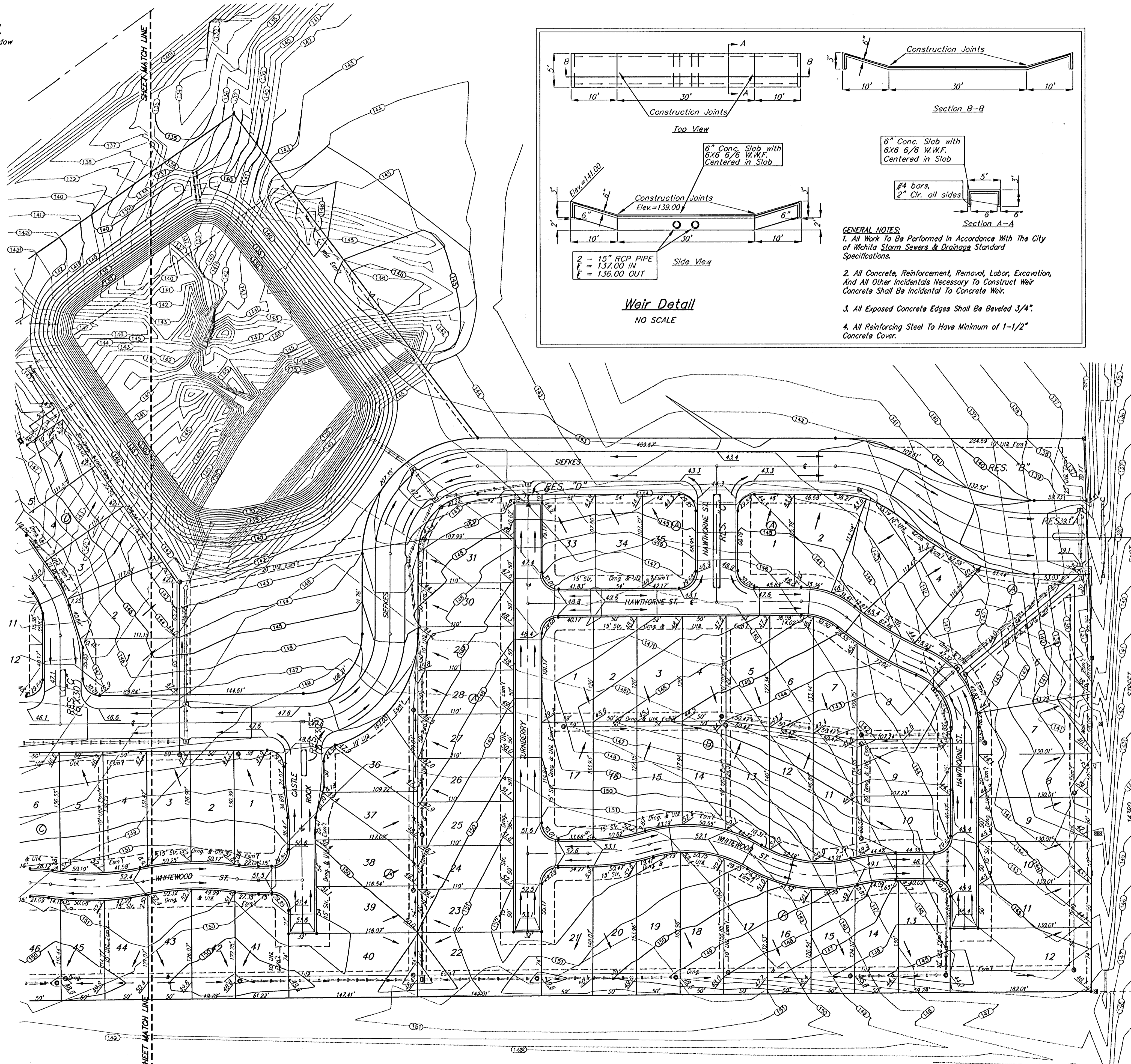
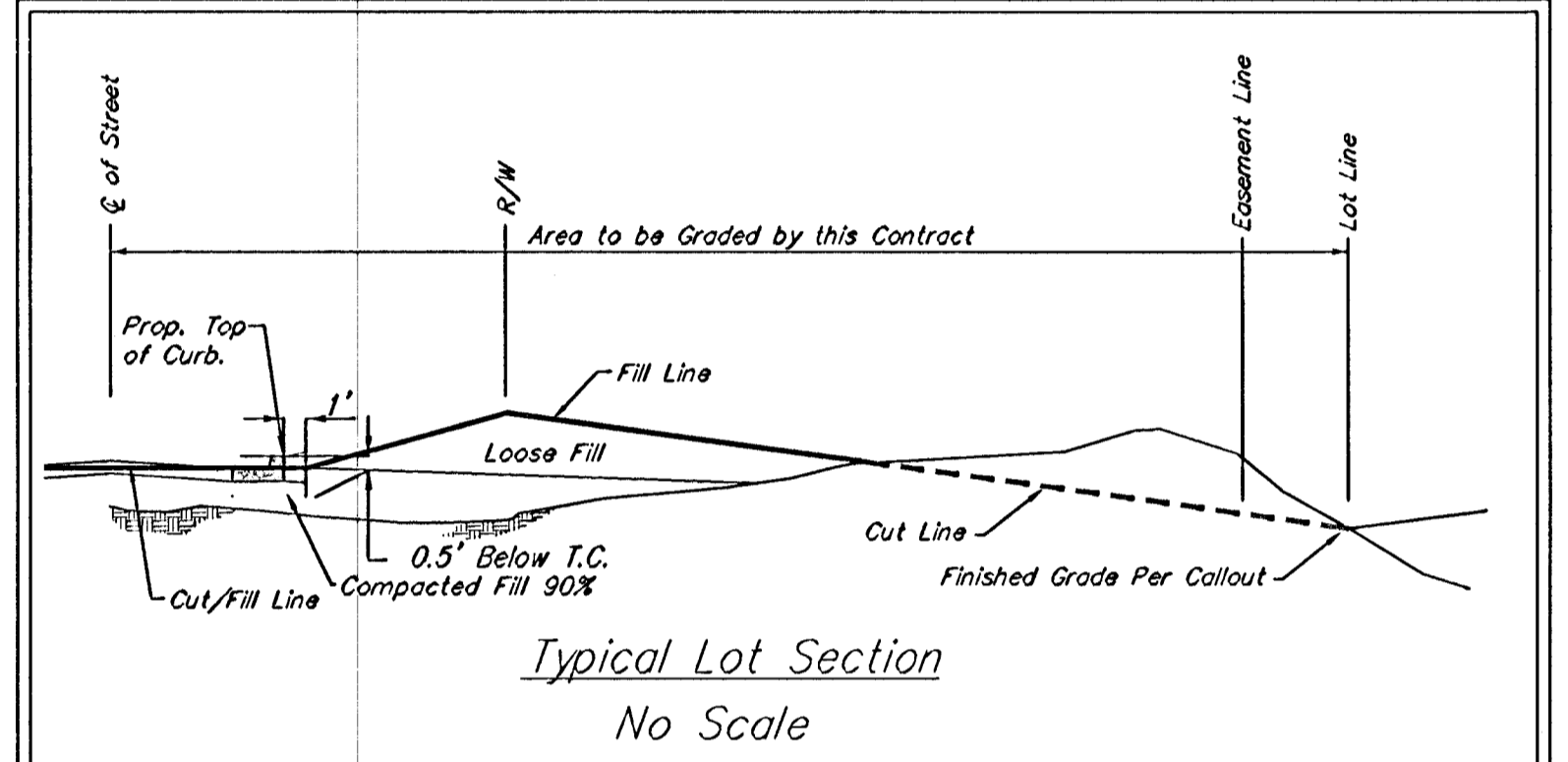


BENCHMARK:
 "E" Cut on Top of Curb, North
 Side Siefkes, NW of Center Line
 of Siefkes Ct., Shadybrook Meadow
 Addition.
 Elev. = 135.19 City Datum
 (1322.59 NGVD)



NOTE: Prior to mass grading, contractor to
 strip top 3" of topsoil and stockpile on site.
 After grading, topsoil shall be redistributed in
 all areas except street R/W to bring the final
 grade up to the proposed grades shown on the
 mass grading plans.

SCALE:
 1"=60'



— Proposed Contours
 - - - Existing Contours

PROJECT EARTHWORK SUMMARY:
 Mass Grading—
 17,814 C.Y. Excavation
 32,551 C.Y. Compacted Fill
 Pond Plan—
 44,496 C.Y. Excavation
 2,700 C.Y. Compacted Fill
 Total—
 62,310 C.Y. Excavation
 35,251 C.Y. Compacted Fill
 (Note: This Quantity is to Achieve Final Shape of
 Pond. It Does Not Include The Over-Excavation of
 1' To Place Clay Liner.)

All necessary borrow will be available on site from Reserve "E".
 Earthwork quantities do not include correction factors and
 are for reference only. All cost associated with mass grading
 shall be included in lump sum bid item "Mass Grading".
 All excess excavation shall be stock piled along the NW side of Lots
 6-20, Block D (20' wide x 5' high). Any additional fill shall be
 stockpiled on Lots 6-20, Block D (60' wide, 5' high) and on the
 front half of Lots 2-5, Block D (40' wide) up to an elevation of 148.
 If any additional stockpile area is needed, contact Engineer.
 The stock pile shall not cover existing or proposed utilities or esm'ts

NOTE: All easements that have not been graded with the sanitary
 sewer easement grading plan shall be graded with this project.
 Contractor to remove trees only if necessary for Project
 construction and if approved by Engineer. All disturbed areas shall
 be seeded in accordance with note 3, pg. 17 (Pond Plan).
 CAUTION: All underground utilities have been installed (sanitary
 sewer, water distribution system, and storm water sewer (separate
 project)). It shall be the Contractor's responsibility to protect
 these systems and repair any damage caused by themselves or
 their subcontractors at no additional cost to the project.

SHOAL CREEK ADDITION
MASS GRADING
 CITY OF WICHITA, KANSAS

BAUGHMAN COMPANY P.A.
 ENGINEERING, SURVEYING, & PLANNING
 316-262-7271 • 315 ELLIS • WICHITA, KANSAS 67211

PROJECT NUMBER
488-83187

DESIGN SCL	DRAWN SCL	APPROVED NBW	DATE 01/15/01	SCALE NOTED	SHEET 19
					OF 28