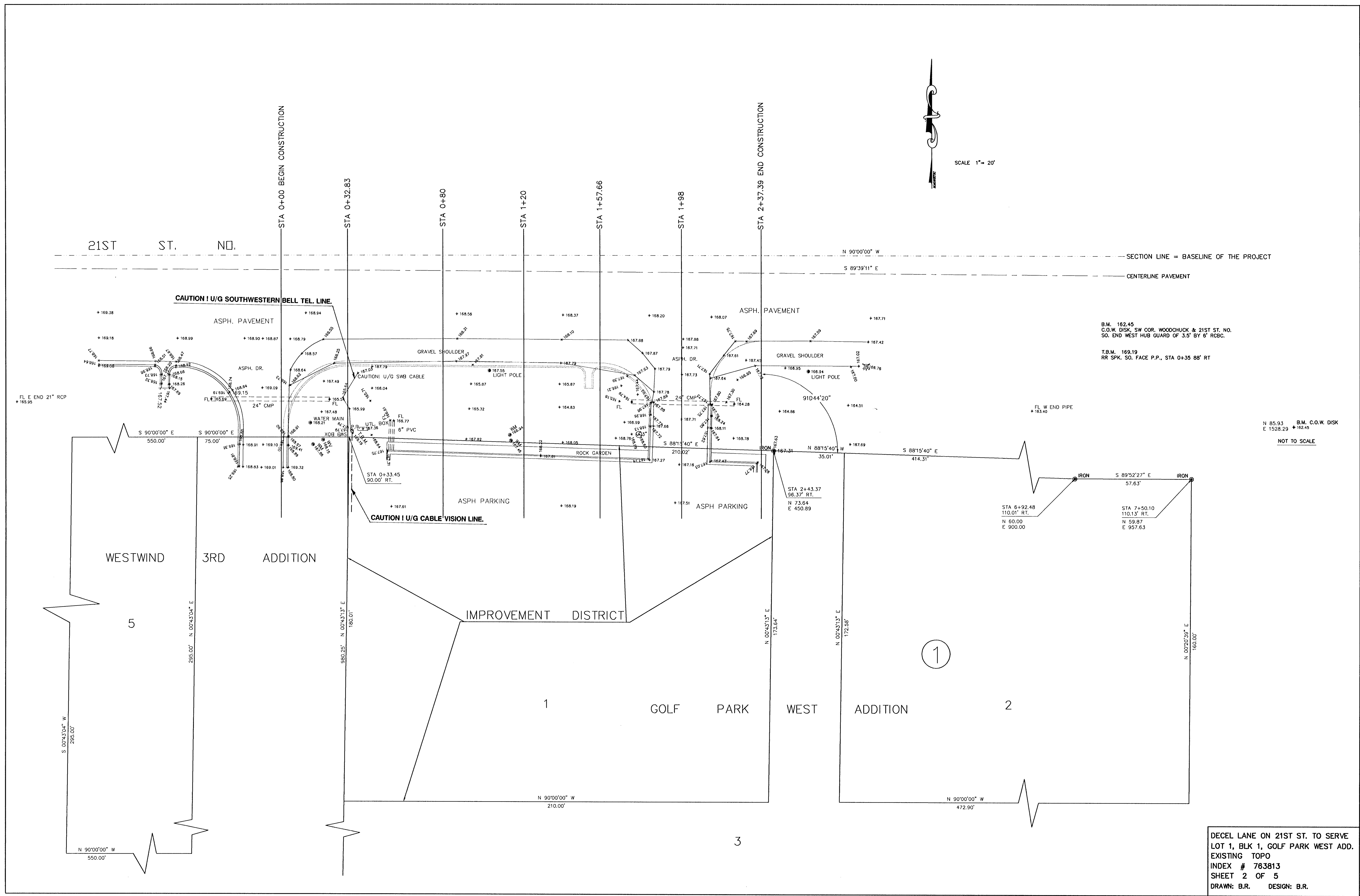




SCALE 1" = 20'



B.M. 162.45
C.O.W. DISK, SW COR. WOODCHUCK & 21ST ST. NO.
SO. END WEST HUB GUARD OF 3.5' BY 6' RCBC.
T.B.M. 169.19
RR SPK. SO. FACE P.P., STA 0+35.88' RT

N 85.93 B.M. C.O.W. DISK
E 1528.29 +162.45
NOT TO SCALE

DECEL LANE ON 21ST ST. TO SERVE
LOT 1, BLK 1, GOLF PARK WEST ADD.
EXISTING TOPO
INDEX # 763813
SHEET 2 OF 5
DRAWN: B.R. DESIGN: B.R.