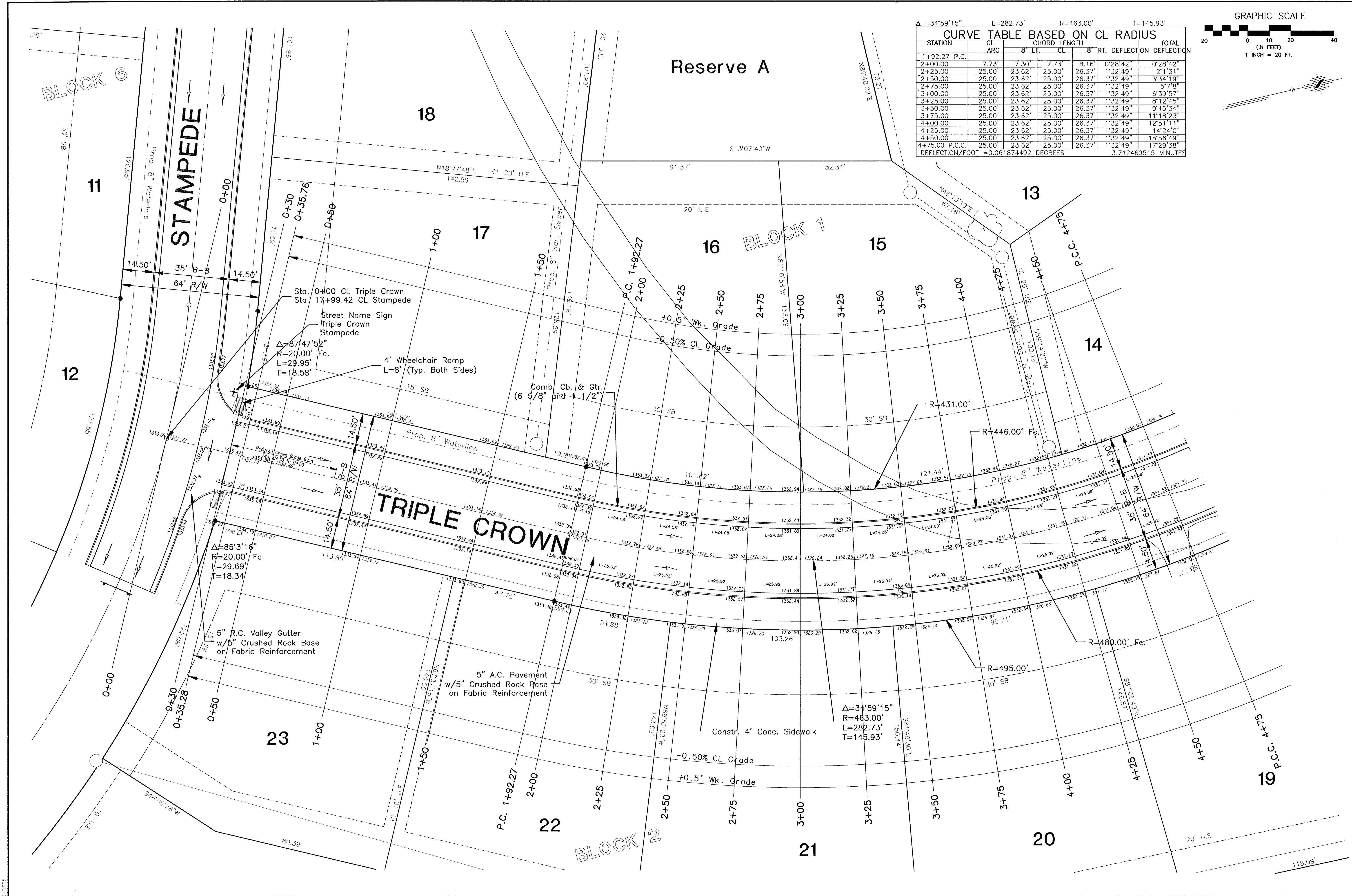
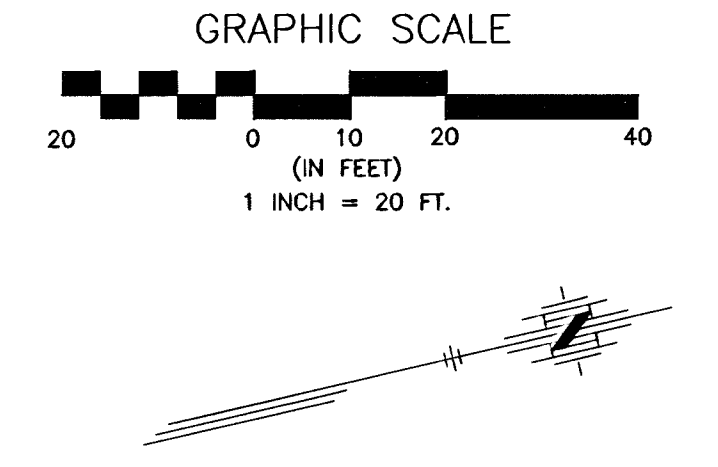


G:\APR03\004\01694\BASE-ST\ju.dwg Thu Mar 14 16:12:06 2002



Δ = 34°59'15" L = 282.73' R = 463.00' T = 145.93'

STATION	CURVE TABLE BASED ON CL RADIUS		CHORD LENGTH		TOTAL	
	CL ARC	8' LT.	8' RT.	DEFLECTION	DEFLECTION	DEFLECTION
1+92.27 P.C.						
2+00.00	7.73'	7.30'	7.73'	8.16'	0°28'42"	0°28'42"
2+25.00	25.00'	23.62'	25.00'	26.37'	1°32'49"	2°11'31"
2+50.00	25.00'	23.62'	25.00'	26.37'	1°32'49"	3°34'19"
2+75.00	25.00'	23.62'	25.00'	26.37'	1°32'49"	5°7'8"
3+00.00	25.00'	23.62'	25.00'	26.37'	1°32'49"	6°39'57"
3+25.00	25.00'	23.62'	25.00'	26.37'	1°32'49"	8°12'45"
3+50.00	25.00'	23.62'	25.00'	26.37'	1°32'49"	9°45'34"
3+75.00	25.00'	23.62'	25.00'	26.37'	1°32'49"	11°18'23"
4+00.00	25.00'	23.62'	25.00'	26.37'	1°32'49"	12°51'11"
4+25.00	25.00'	23.62'	25.00'	26.37'	1°32'49"	14°24'0"
4+50.00	25.00'	23.62'	25.00'	26.37'	1°32'49"	15°56'49"
4+75.00 P.C.C.	25.00'	23.62'	25.00'	26.37'	1°32'49"	17°29'38"
DEFLECTION/FOOT = 0.061874492 DEGREES 3.712469515 MINUTES						



FINAL

Designed By: J. Ubert / J. Dickman
Drawn By: J. Dickman
Poe Job No.: 1694A
Date: March 2002

Sheet
8 of 112

EOUSTRIAN ESTATES - PHASE 1
STREET IMPROVEMENTS
TRIPLE CROWN
CITY OF WICHITA, KANSAS
MICHAEL E. LINDBERG, P.E. - CITY ENGINEER
C.O.A. # 472-6424 O.C.A. # 785105

POE & ASSOCIATES OF KANSAS, INC.
CONSULTING ENGINEERS
5940 E. Central, Suite 200, Wichita, KS 67208-4242
Phone 316-685-1114 FAX 316-685-4444