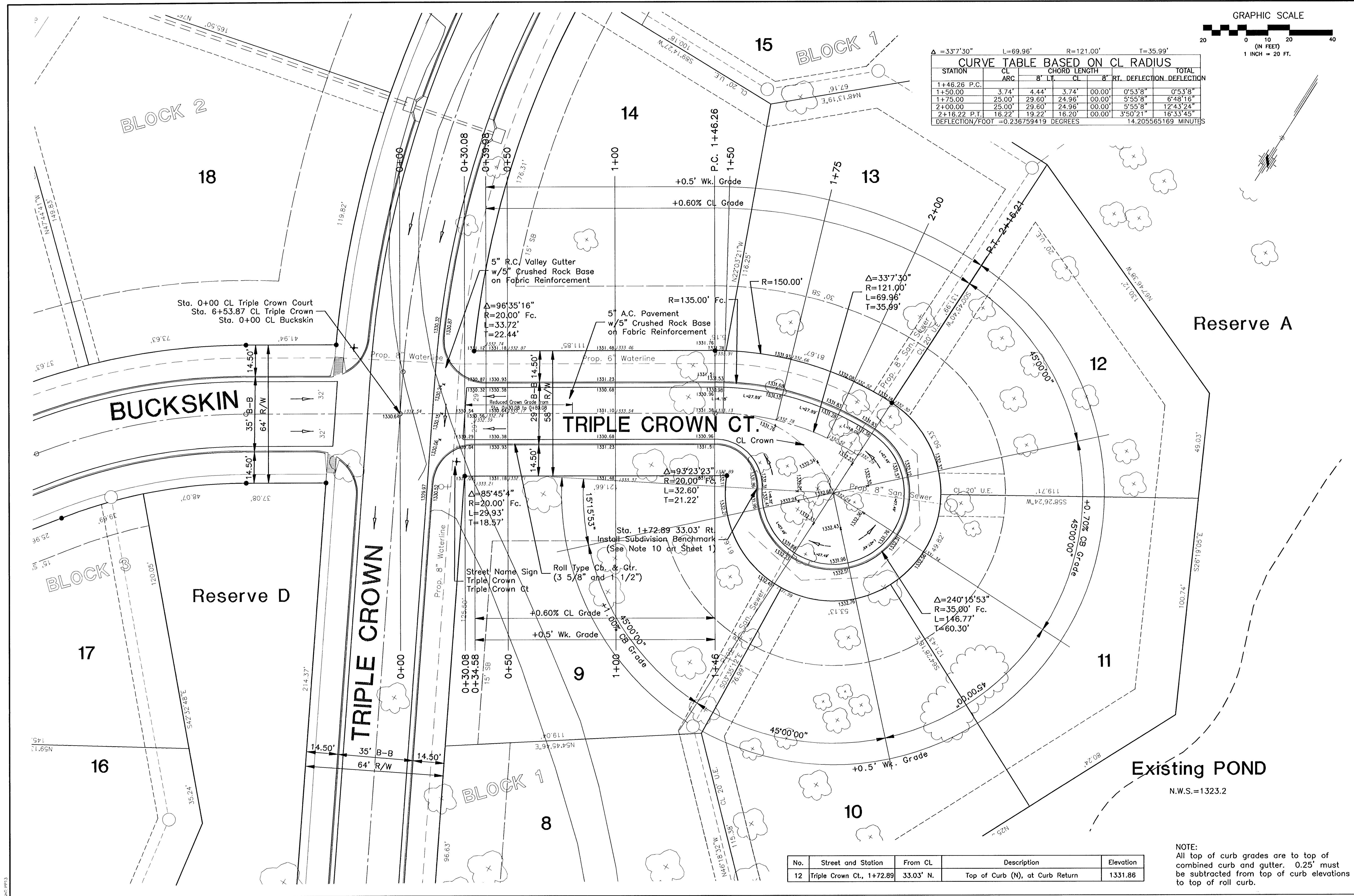
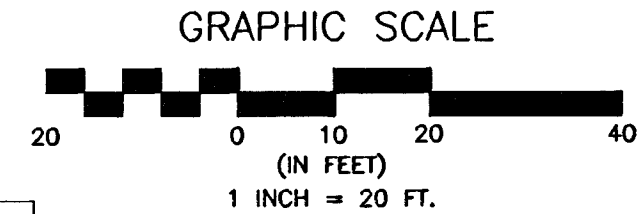


G:\APPS\DOCA\PLANS\BASE-ST\11.dwg P1 Mar 15 08:53:45 2002 James Ubart - Poe & Associates of Kansas, Inc.



**CURVE TABLE BASED ON CL RADIUS**

STATION	CL ARC	CHORD LENGTH	CL	RT. DEFLECTION	TOTAL DEFLECTION
1+46.26 P.C.					
1+50.00	3.74'	4.44'	3.74'	0°53'8"	0°53'8"
1+75.00	25.00'	29.60'	24.96'	0°00'	6°48'16"
2+00.00	25.00'	29.60'	24.96'	0°00'	12°43'24"
2+16.22 P.T.	16.22'	19.22'	16.20'	0°00'	16°33'45"
DEFLECTION/FOOT = 0.236759419 DEGREES		14.205565169 MINUTES			



No.	Street and Station	From CL	Description	Elevation
12	Triple Crown Ct., 1+72.89	33.03' N.	Top of Curb (N), at Curb Return	1331.86

NOTE:  
All top of curb grades are to top of combined curb and gutter. 0.25' must be subtracted from top of curb elevations to top of roll curb.

EQUINESTATES - PHASE 1		STREET IMPROVEMENTS	
TRIPLE CROWN COURT		CITY OF WICHITA, KANSAS	
MICHAEL E. LINDBERGH, P.E.		CITY ENGINEER	
C.O.N. Project # 472-83424		O.C.A. # 765705	
POE & ASSOCIATES OF KANSAS, INC.		CONSULTING ENGINEERS	
5940 E. Central, Suite 200		Wichita, KS 67208-4242	
Phone 316/685-4114		FAX 316/685-4444	
<b>PE</b>			
Designed By: J. Ubart / J. Dickman	Drawn By: J. Dickman	Date: March 2002	
Poe Job No.: 1694A		Sheet	
16 of 112			