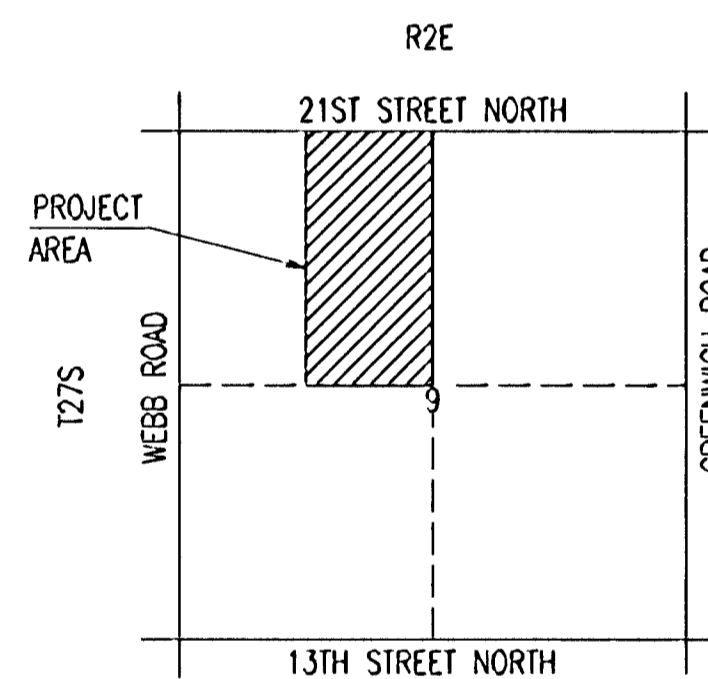


INDEX OF SHEETS

1. TITLE SHEET
- 2-3. PLAT
- 4-5. TYPICAL SECTIONS
- 6-8. PAVING PLANS-19TH ST. N./FREDERIC
- 9-11. PAVING PLAN-FREDERIC/RED OAKS
12. PAVING PLAN-CHURCHILL
13. PAVING PLAN-19TH ST. N.
14. VALLEY CUTTER DETAILS
15. MISCELLANEOUS PAVING DETAILS
16. STD. DRIVE ENTRANCES
17. PLAN & PROFILE-SWS LINE NO. 1
18. PLAN & PROFILE-SWS LINE NO. 1A
- 19-20. PLAN & PROFILE-SWS LINE NO. 2
21. PLAN & PROFILE-SWS LINE NO. 2A AND 3
22. PLAN & PROFILE-SWS LINE NO. 4
23. SPECIAL TYPE 1A INLET TOP AND RIPRAP DETAILS
24. STD. TYPE 1A CURB INLET (L=5'-0")
25. STD. TYPE 1A CURB INLET (L=10'-0")
26. STD. AREA INLET DETAILS
27. REINFORCED CONCRETE MANHOLE
28. MANHOLE FRAME AND COVER DETAILS
29. FOUR CORNER LOT GRADING PLAN
- 30-33. EROSION CONTROL DETAILS
34. SIGNING DETAILS
- 35-58. CROSS SECTIONS

PROJECT SURVEY CONTROL

- BM #3 -1" POST 75' WEST AND 15' SOUTH OF THE SOUTH EAST CORNER OF LOT 25, BLOCK 6, REMINGTON PLACE. ELEV. = 204.18
- BM #4 -1" POST 75' NORTH AND 12' EAST OF THE SOUTH EAST CORNER OF LOT 6, BLOCK 3, REMINGTON PLACE. ELEV. = 210.405
- BM #4-A -1" POST 5' EAST OF THE NORTH WEST CORNER OF LOT 1, BLOCK 4, REMINGTON PLACE. ELEV. = 210.06
- BM "A" -CHISELED "A" ON THE EAST END OF A RCB HEADWALL ON THE NORTH WEST CORNER OF 19TH STREET AND VINE GATE INTERSECTION. ELEV. = 193.385
- BM #5 -CHISELED "A" ON THE TOP OF CURB AT THE NORTH EAST CORNER OF A UTILITY SHED, 110' NORTH AND 10.5' WEST OF THE NORTH EAST CORNER OF LOT 12, BLOCK 1, REMINGTON PLACE. ELEV. = 204.39



VICINITY MAP

EARTHWORK

EXCAVATION 7,330 CU. YDS.  
 COMPACTED FILL 1,364 CU. YDS.  
 BORROW EXCAVATION (ON SITE, FROM C.O.W. PROJ. NO. 468-83252) 50,380 CU. YDS.

PROJECT LENGTH = 3,235 LIN. FT.

34,777 C.Y. REQUIRED FOR LOOSE FILL WITHIN R/W AND FOR LOT GRADING.  
 ALL FILL TO BE COMPACTED TO 90% STD. DENSITY.

50,380 EXCESS EXCAVATION FROM C.O.W. PROJ. 468-83252

TO BE USED AS FOLLOWS:

- 29,084 C.Y. TO BE USED FOR LOT GRADING WITHIN IMPROVEMENT DISTRICT LIMITS. SEE CROSS SECTIONS AND SHEET NO. 29
- 26,589 C.Y. TO BE PLACED WITHIN REMINGTON OUTSIDE IMPROVEMENT DISTRICT LIMITS. THE CONTRACTOR SHALL CONTACT THE DEVELOPER (MR. DAVE SPROLL AT 636-9445) FOR DIRECTION ON THE PLACEMENT OF EXCESS EXCAVATED MATERIAL OUTSIDE THE IMPROVEMENT DISTRICT BOUNDARY.
- SEE SHEET NO. 29 FOR LOT GRADING PLAN.

SUBDIVISION BENCH MARKS (SBM)				
NO.	STREET AND STATION	FROM CL.	DESCRIPTION	ELEVATION
1	19TH STREET NORTH & FREDERIC	35.5' LT.	TOP OF CURB AT S.W. END OF CURB RETURN	----
2	FREDERIC & 19TH STREET NORTH	18.9' LT.	TOP OF CURB AT SOUTH END OF CURB RETURN	----
3	FREDERIC, STA. 23+32.54	17.0' LT.	T.C. AT P.C. NEAR S.W. COR. LOT 28, BLK. 7	----
4	FREDERIC & CHURCHILL	14.0' RT.	TOP OF CURB AT N.W. END OF CURB RETURN	----
5	CHURCHILL & RED OAKS	14.0' LT.	TOP OF CURB AT S.E. END OF CURB RETURN	----

THE COST OF BENCH MARK DISC, INCLUDING INSTALLATION SHALL BE INCIDENTAL TO THE CURB.

# CITY OF WICHITA, KANSAS

## MICHAEL E. LINDEBAK, P.E., CITY ENGINEER

### STREET & DRAINAGE IMPROVEMENTS

19TH STREET NORTH - FROM THE E.L. OF VINEGATE TO THE W.L. OF 19TH COURT NORTH  
 FREDERIC/REDOAKS - FROM THE S.L. OF LOT 24, BLOCK 6, TO THE N.L. OF CHURCHILL  
 CHURCHILL - FROM THE E.L. OF FREDERIC TO THE E.L. OF LOT 5, BLOCK 1  
 SIDEWALK - ON NORTH SIDE OF 19TH STREET NORTH FROM VINEGATE TO FREDERIC;  
 THE SOUTH SIDE OF 19TH STREET NORTH FROM FREDERIC TO 19TH COURT NORTH;  
 ON THE EAST SIDE OF FREDERIC FROM 19TH STREET NORTH TO THE S.L. OF LOT 28, BLOCK 7

IN

## REMINGTON PLACE-PHASE 1

CITY OF WICHITA PROJECT NO. 472-76-245-83375-000-000-001  
 OCA NO. 765698

GENERAL NOTES

UNDERGROUND UTILITY SERVICE LINES AND OVERHEAD UTILITY POLE LINES ARE TO BE ADJUSTED AS NECESSARY BY OTHERS PRIOR TO CONSTRUCTION UNLESS THE PLANS SPECIFICALLY CALL FOR THEIR ADJUSTMENT BY THE CONTRACTOR. EXISTING UTILITIES AND THEIR LOCATION, AS SHOWN ON THE PLANS, REPRESENT THE BEST INFORMATION OBTAINABLE FOR DESIGN. LOCATION INFORMATION HAS BEEN OBTAINED FROM THE VARIOUS UTILITY COMPANIES AND IS EITHER FROM COMPANY RECORD DRAWINGS OR COMPANY PROVIDED FIELD LOCATIONS. THE CONTRACTOR WILL BE REQUIRED TO WORK AROUND EXISTING UTILITIES WITHIN THE RIGHT-OF-WAY WHICH DO NOT CONFLICT WITH PROPOSED CONSTRUCTION.

TREES AND SHRUBS IN PUBLIC RIGHT-OF-WAY WHICH ARE IN DIRECT CONFLICT WITH PROPOSED NEW CONSTRUCTION SHALL BE REMOVED BY THE CONTRACTOR WITH THE ENGINEER'S APPROVAL. TREES AND SHRUBS WHICH ARE NOT IN DIRECT CONFLICT WITH PROPOSED NEW CONSTRUCTION SHALL BE SAVED AND PROTECTED FROM DAMAGE.

RUBBLE FROM THE REMOVAL OF MISCELLANEOUS STRUCTURES SHALL BE DISPOSED OF ON SITES TO BE PROVIDED BY THE CONTRACTOR AND APPROVED AS NOTED BELOW.

ALL DISPOSAL SITES MUST BE APPROVED BY THE KANSAS DEPARTMENT OF HEALTH AND ENVIRONMENT. MATERIAL EITHER STOCKPILED OR DISPOSED OF IN A FLOOD PLAIN WOULD REQUIRE A KANSAS STATE BOARD OF AGRICULTURE PERMIT. ANY MATERIAL DUMPED IN WATERS OF THE UNITED STATES OR WETLANDS IS SUBJECT TO U.S. CORPS OF ENGINEERS PERMITTING REGULATIONS. ANY MATERIAL BURIED OR STOCKPILED BEYOND APPROVED CONSTRUCTION LIMITS WOULD REQUIRE ADDITIONAL ARCHEOLOGICAL INVESTIGATIONS UNLESS BURIED IN A PREVIOUSLY APPROVED BORROW LOCATION.

CONTRACTOR SHALL SATISFY HIMSELF OF SURFACE AND SUBSURFACE CONDITIONS PRIOR TO BIDDING.

TEMPORARY SURFACING MATERIAL (ROCK, ASPHALT, ETC.) MAY HAVE BEEN PLACED WITHIN STREET RIGHTS-OF-WAY FOR HAUL ROADS AND TEMPORARY ACCESS. CONTRACTOR SHALL FIELD VERIFY EXISTING CONDITIONS TO DETERMINE EXTENT, IF ANY, OF SUCH SURFACING. CONTRACTOR SHALL REMOVE SAID TEMPORARY SURFACING IN THE SAME MANNER AS NOTED ABOVE FOR RUBBLE. THIS REMOVAL SHALL BE SUBSIDIARY TO "EXCAVATION".

CONTRACTOR SHALL PROVIDE A MINIMUM FORTY-EIGHT (48) HOUR ADVANCE NOTICE (EXCLUDING WEEKENDS AND HOLIDAYS) PRIOR TO BEGINNING ANY EXCAVATION, TO KANSAS ONE-CALL SYSTEM, A UTILITY LOCATION SERVICE, AT (316) 687-2470 TO REQUEST THE FOLLOWING UTILITY COMPANIES TO LOCATE ALL EXISTING LINES WITHIN THE PROJECT AREA: K.G.S. GAS, PEOPLES NATURAL GAS, K.G.E. ELECTRIC, SOUTHWESTERN BELL TELEPHONE, COX COMMUNICATIONS, CITY OF WICHITA SEWER MAINTENANCE AND CITY OF WICHITA WATER DEPARTMENT.

THE CONTRACTOR SHALL BE RESPONSIBLE FOR PRESERVING PROPERTY IRONS. THE CONTRACTOR WILL BE REQUIRED TO RE-ESTABLISH ANY PROPERTY IRONS WHICH ARE DAMAGED OR DESTROYED BY HIS CONSTRUCTION OPERATIONS. SUCH IRONS SHALL BE RE-ESTABLISHED BY A LICENSED LAND SURVEYOR IN ACCORDANCE WITH STATE LAWS.

THE WATER DEPARTMENT SHALL FIELD LOCATE WATER VALVES ONE TIME DURING CONSTRUCTION WHEN REQUESTED BY THE CONTRACTOR. IT SHALL BE THE CONTRACTOR'S RESPONSIBILITY TO PRESERVE SUCH FIELD LOCATIONS DURING THE CONSTRUCTION PROCESS. WATER VALVES, WATER VALVE BOXES OR FIRE HYDRANTS DAMAGED DURING CONSTRUCTION SHALL BE REPAIRED BY THE CONTRACTOR AT HIS OWN EXPENSE.

THE CONTRACTOR SHALL ADJUST WATER VALVE BOXES AS DIRECTED BY THE ENGINEER. THIS WORK TO BE SUBSIDIARY TO OTHER BID ITEMS.

INLET HOOKUPS SHALL BE BID PER EACH REGARDLESS OF INLET SIZE.

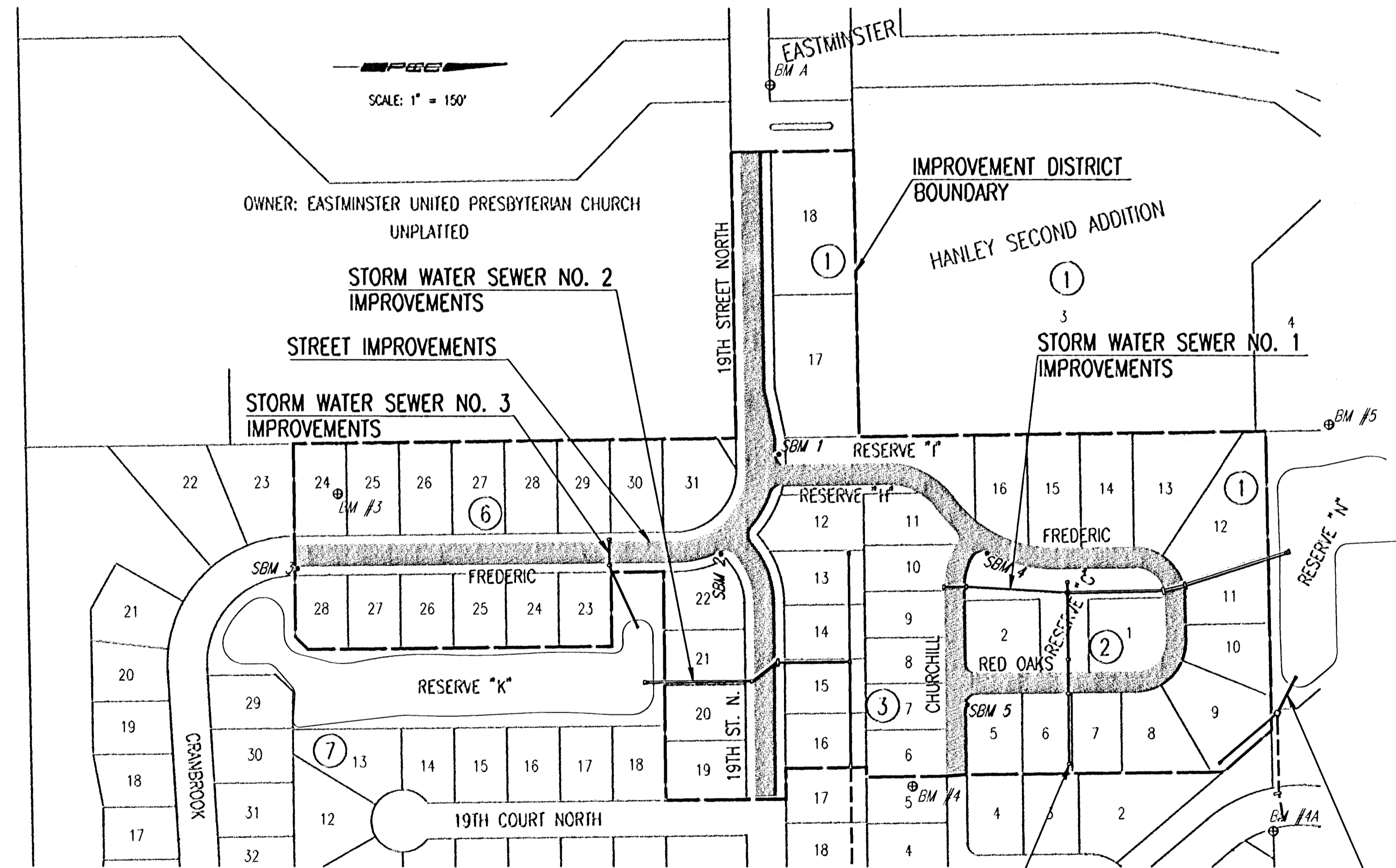
THIS PROJECT DOES NOT INCLUDE ANY PROVISIONS FOR CONSTRUCTION OF DRIVEWAYS.

THE CONTRACTOR SHALL APPLY TEMPORARY SEED AND MULCH TO ALL UNPAVED AREAS DISTURBED BY HIS CONSTRUCTION OPERATIONS IN ACCORDANCE WITH THE CITY OF WICHITA SPECIFICATIONS. THIS WORK SHALL BE PAID FOR AT THE CONTRACT LUMP SUM PRICE BID FOR "PROJECT SEEDING".

EROSION CONTROL (BMP'S)  
 THE CONTRACTOR SHALL INSTALL AND/OR MAINTAIN EROSION CONTROL METHODS AS SPECIFIED ON SHEET 30. THE FOLLOWING QUANTITIES ARE ESTIMATED, AND SHOULD BE CONSIDERED THE MINIMUM EFFORT REQUIRED. INSTALLATION OF THESE BMP'S DOES NOT RELIEVE THE CONTRACTOR OF THE RESPONSIBILITY OF ABATING SOIL EROSION.

- INLET PROTECTION 14 EACH
- SILT FENCE BARRIER 1800 L.F.
- CONSTRUCTION ENTRANCE 1 EACH
- BACK OF CURB PROTECTION 6200 L.F.
- DITCH CHECK 2 EACH

LOT GRADING AND COORDINATION  
 THE CONTRACTOR SHALL BE REQUIRED TO WORK AROUND HOUSE CONSTRUCTION CURRENTLY UNDERWAY AND COORDINATE WITH THE HOME BUILDERS AND DEVELOPER ON ACCESS AND LOT GRADING ISSUES.



OCTOBER 2001

PLANS PREPARED BY  
 PROFESSIONAL ENGINEERING CONSULTANTS, P.A.  
 ENGINEERS  
 WICHITA, KANSAS

