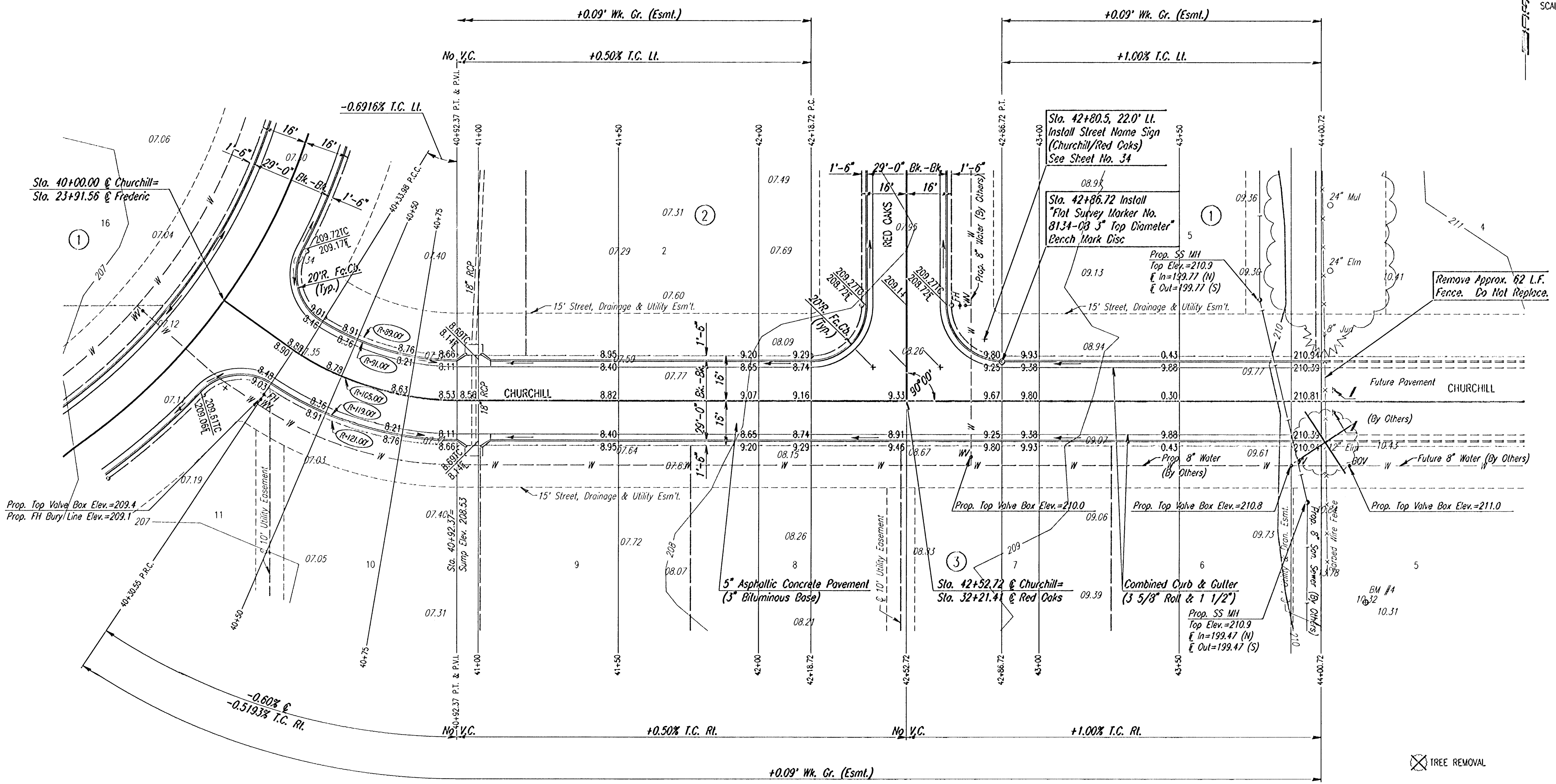


C CURVE DATA						
$\Delta=33^{\circ}44'18"$		$D=54^{\circ}34'03"$		$R=105.00'$	$L=61.82'$	$T=31.84'$
CURVE DATA BASED ON C RADIUS $\Delta/2=16^{\circ}52'09"$						
STATION	ARC LENGTH	FACE CURB LENGTH	CHORD LENGTH	DEFLECTION ANGLE	TOTAL DEFLECTION	
LEFT CURB	RIGHT CURB	STOFF LEFT FACE CURB	STOFF RIGHT			
40+30.55				00°00'00"	00°00'00"	
40+33.98	3.43'			0°56'09"	0°56'09"	
40+50	16.02'	13.88'	18.16'	4°22'15"	5°18'24"	
40+75	25.00'	22.06'	28.33'	6°49'15"	12°07'39"	
40+92.37	17.38'	15.33'	19.70'	4°44'30"	16°52'09"	
TOTAL	61.83'	54.55'	70.07'	Defl./ft.=16.372533 min.		

WATER VALVE BOX ELEVATIONS			
STREET	STATION	OFFSET	PROPOSED ELEVATION
CHURCHILL	40+30.55	21.0' RL	209.4
CHURCHILL	42+75.72	20.0' RL	210.0
CHURCHILL	43+90.72	23.0' RL	210.8
CHURCHILL	44+00.72	23.0' RL	211.0

PROJECT NO.	SHEET NO.	TOTAL SHEETS
472-76-245-83375-000-000-001	12	58



NOTE: THIS STREET TO BE CONSTRUCTED WITH ROLL-TYPE CURB. TOP OF CURB ELEVATIONS GIVEN ARE FOR FULL HEIGHT CURB.

☒ TREE REMOVAL

# SEE SHEET NO. 34 FOR SIGNING NOTES & DETAILS.

No.	Revisions	By	Date
REMINGTON PLACE-PHASE I CITY OF WICHITA, KANSAS  <b>CHURCHILL</b> STA. 40+00 TO STA. 44+00.72			
<b>Professional Engineering Consultants, P.A.</b> 303 S. TOPEKA • WICHITA, KANSAS 67202 316-262-2691 • FAX 316-262-3003			
Designed by	BER	Checked by	
Drawn by	BJS	Date	JUNE 2001
Job No.	01158		

DSNR: BER OPER: BJS SCALE: 1"=20'  
 1/2001/01158/STR40-45.DGN Plot Date: 10-23-2001