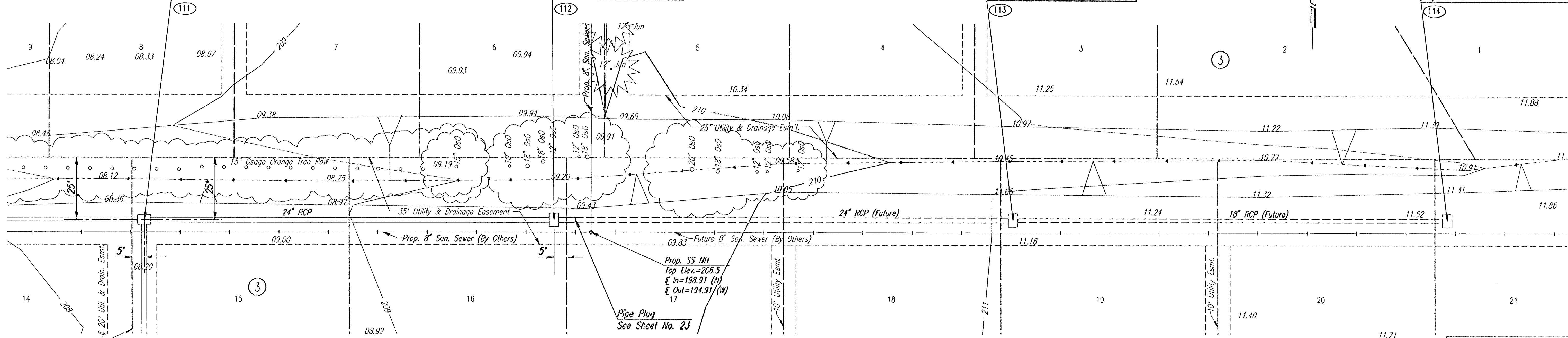


Sta. 21+67.6 SWS Line No. 2
Sta. 40+00.0 SWS Line No. 2A
Std. Area Inlet
L=5'-4", W=3'-10"
Top Elev.=205.3

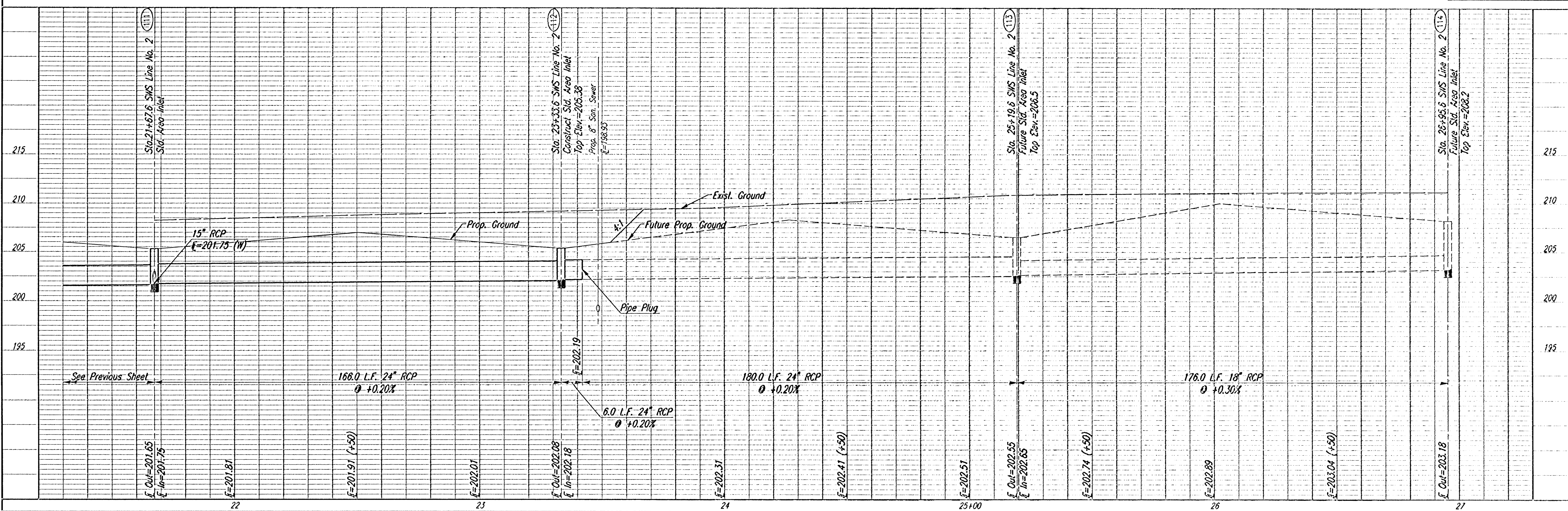
Sta. 23+33.6 SWS Line No. 2
Construct Std. Area Inlet
L=5'-4", W=3'-10"
Top Elev.=205.38
Install 6.0 L.F. 24" RCP ((E)
w/Plug
See Sheet Nos. 26, 31 & 32

Sta. 25+19.6 SWS Line No. 2
Future Std. Area Inlet
L=5'-4", W=3'-10"
Top Elev.=208.5

Sta. 26+95.6 SWS Line No. 2
Future Std. Area Inlet
L=5'-4", W=3'-10"
Top Elev.=208.2



SWS LINE NO. 2 COORDINATE LIST		
POINT	NORTH	EAST
111	385893.6033	2570191.3945
112	385895.4273	2570857.3845
113	385897.4713	2570843.5725
114	385899.4043	2571019.3615



REVISION PLACE PHASE 1
SWS LINE NO. 2
STA. 21+67.6 TO STA. 23+33.6
C.O.W. PROJ. NO. 472-76-246-83375-000-000-001
Professional Engineering Consultants, P.A.
303 S. TOPICA • WICHITA, KANSAS 67202
316-262-2991 • FAX 316-262-0003
Job No. 01158 Date JUNE 2001
Designed by BER
Drawn by BUS
Sheet 20 of 58

I: 2001/01158/swsline2.dgn
Date Plotted: Oct. 23, 2001
Deliver to: Brent Remsberg