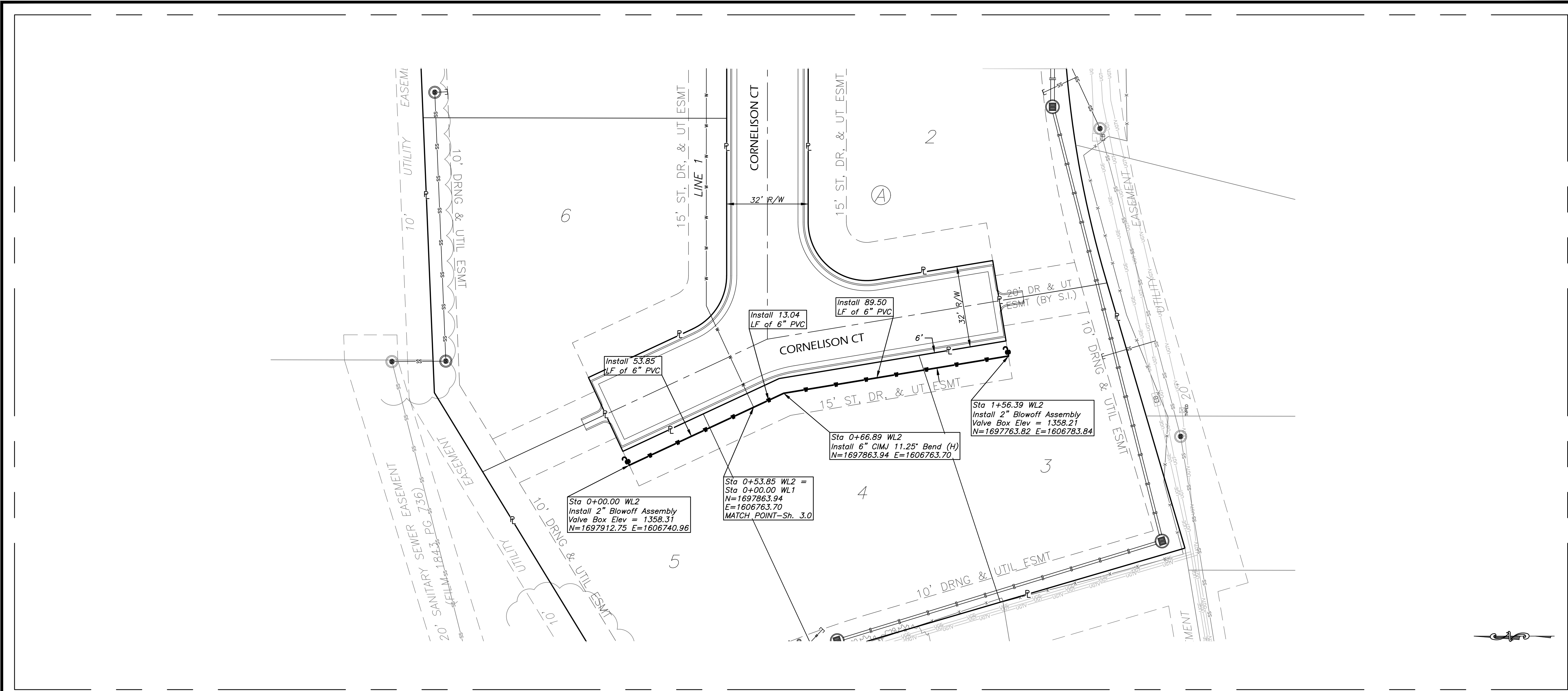


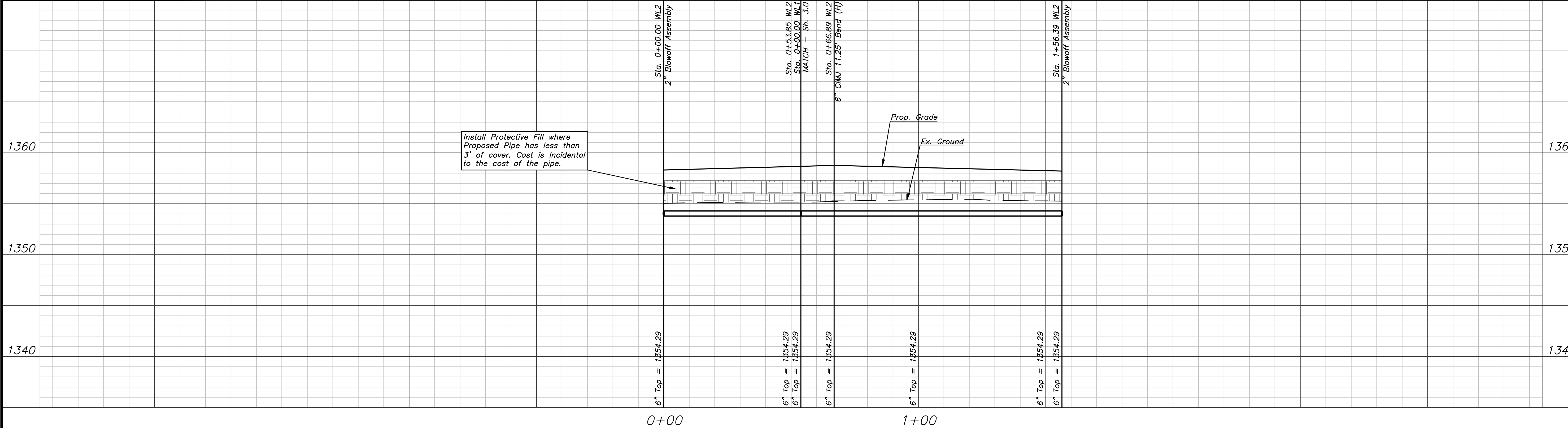


THIS SHEET HAS BEEN
SIGNED, SEALED AND
DATED DIGITALLY

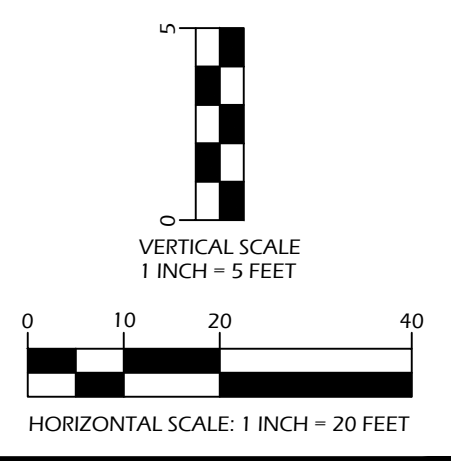
WATER DISTRIBUTION SYSTEM
SUNRIDGE 4TH ADDITION
WICHITA, KANSAS



LINE 2



Install Protective Fill where
Proposed Pipe has less than
3' of cover. Cost is Incidental
to the cost of the pipe.



REVISIONS

NO.	DATE	DESCRIPTION

KEM PROJ. 21183	DATE 03.2024
DESIGNED KEM	DRAWN ZJS

Plan & Profile
Line 2