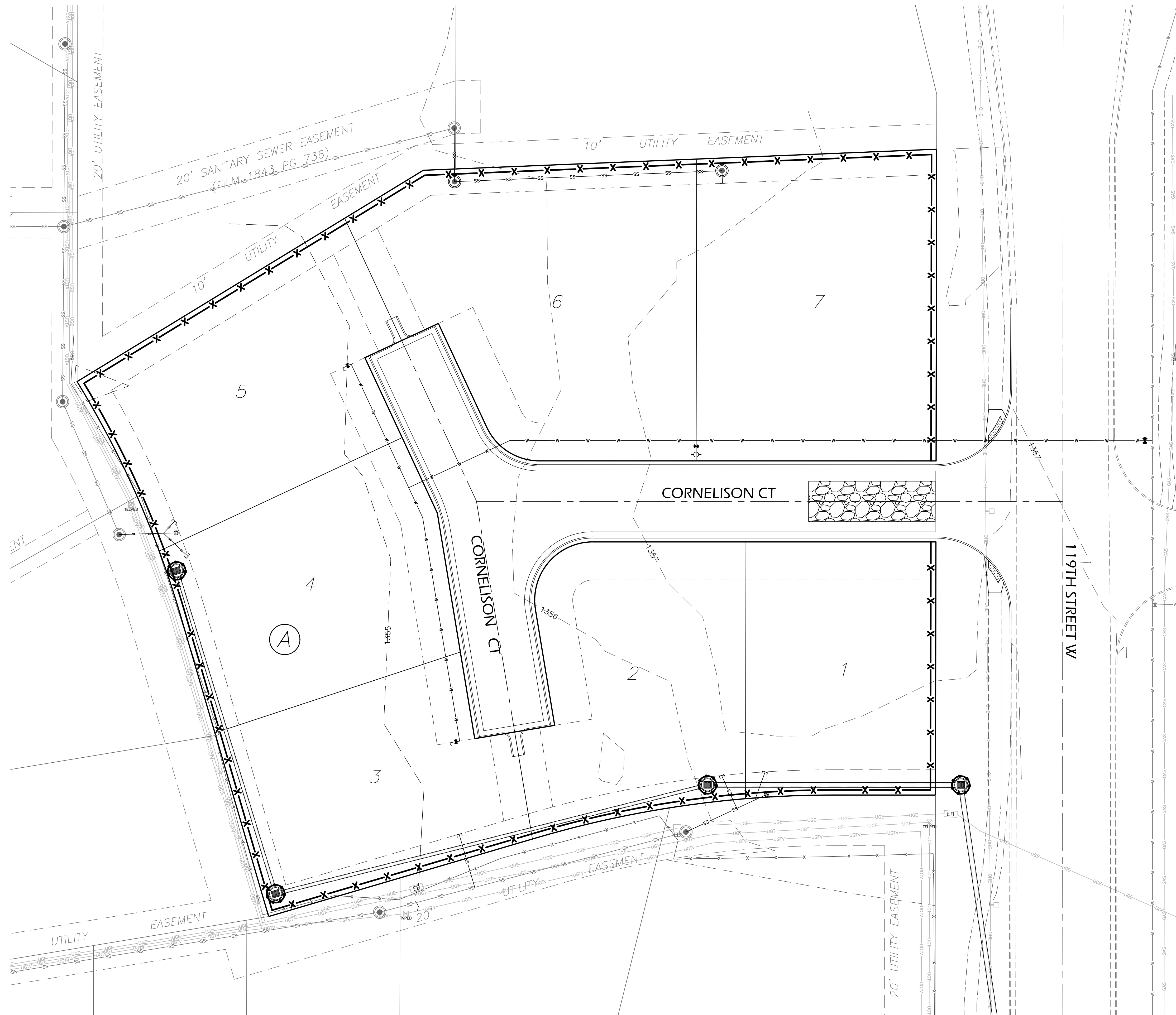


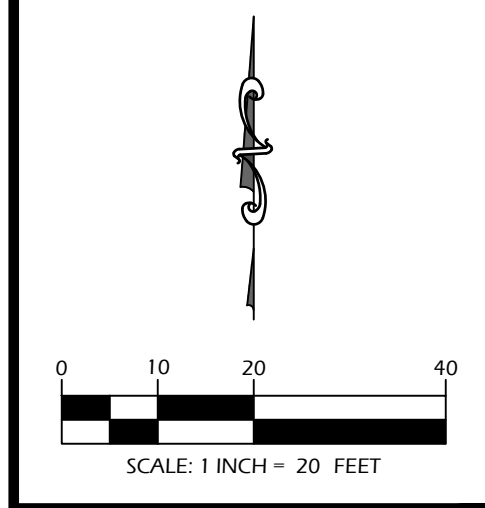
WATER DISTRIBUTION SYSTEM
SUNRIDGE 4TH ADDITION
 WICHITA, KANSAS



- GENERAL NOTES:**
- The BMP's shown on this sheet are considered minimum standards. Whenever sediment enters the streets, storm sewers, ditches, or ponds, contractor will install additional BMP's, as needed, to correct the problem.
 - The soil erosion BMP's shown hereon must be in place at all times during construction until such time as the site is re-established with paving or grass.
 - Back of curb protection can include hay bale, silt fence, Curlex barrier, or approved alternate as shown on BMP standard details. This BMP must remain in place until the area between the curb and right-of-way line has been permanently stabilized.
 - The General Contractor is responsible for the installation and maintenance per the prevention maintenance plan.
 - Concrete trucks will be permitted to wash out only at approved locations, then maintain and clean up as conditions require, by contractor. No hazardous materials are expected to be encountered. Any spills (diesel, fuel, oil, etc.) will be cleaned up and removed immediately. Portable toilets will be supplied and maintained at various sites along the project. Disposal of sewage will be handled by a contracting firm specializing in this activity.
 - The above mentioned storm water prevention methods will be monitored daily and maintained as required. A weekly erosion control log will be posted in the job trailer onsite, and updated weekly. Site inspections are required within 24 hours after a precipitation event of 0.5" or greater.
 - Stabilize disturbed areas within 14 days after soil disruption activities cease. Stabilize with mulch or similarly effective BMPs, in addition to seeding.

LEGEND

	Maintain Construction Entrance	1 ea
	Maintain Drop Inlet Protection	4 ea
	Maintain Silt Fence	1,060 LF



REVISIONS

KEM PROJ. 21183	DATE 03.2024
DESIGNED KEM	DRAWN ZJS

Erosion Control Plan