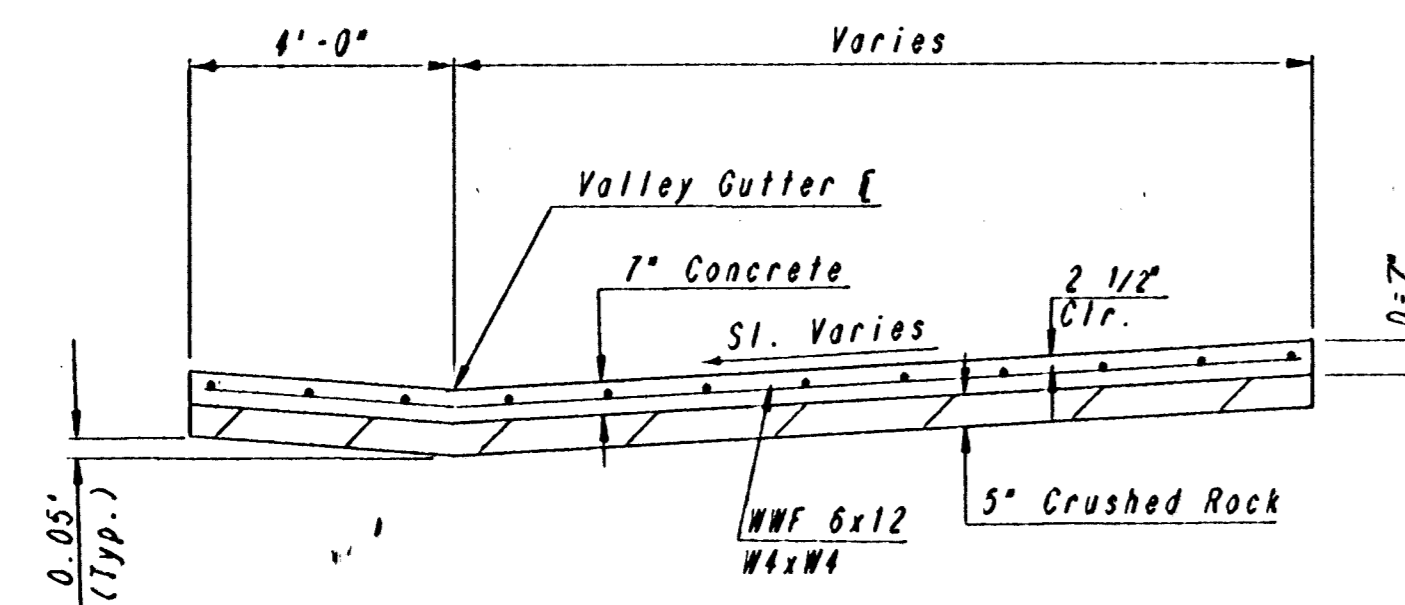
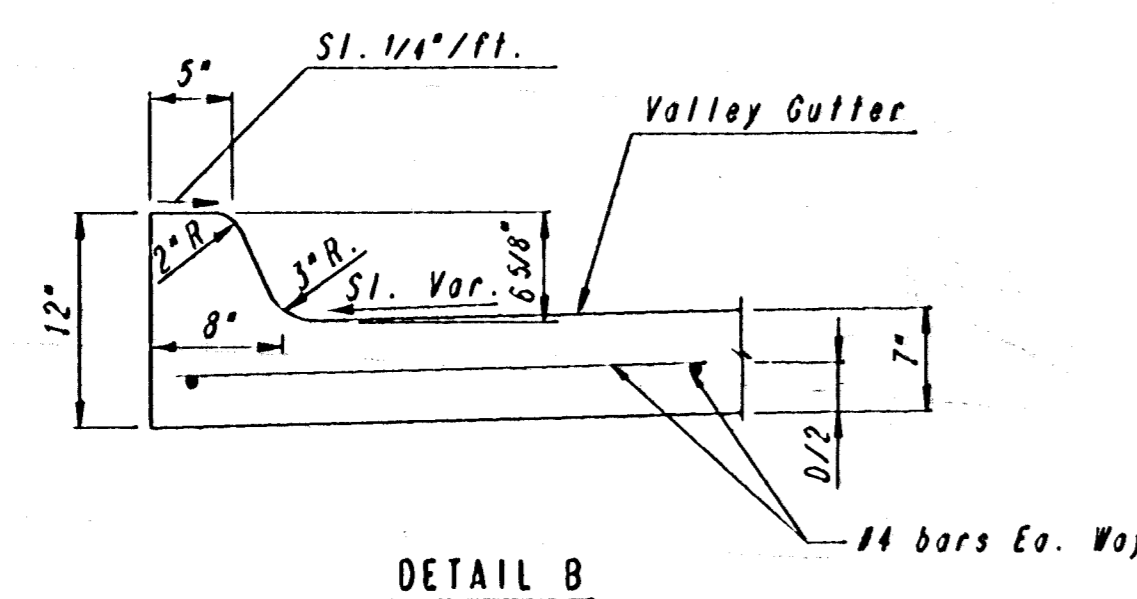


PLAN	SURVEYED	BY	DATE
NOTE BOOK	PICTURED		
NO.	ALIGNMENT CHECKED		
	RT. OF WAY CHECKED		

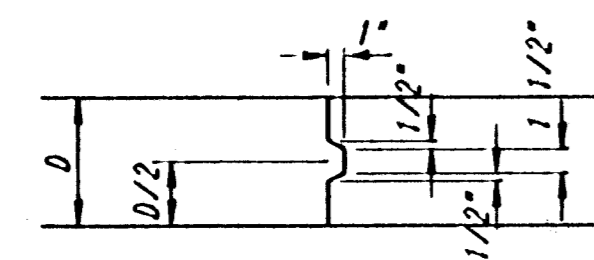


SECTION A-A

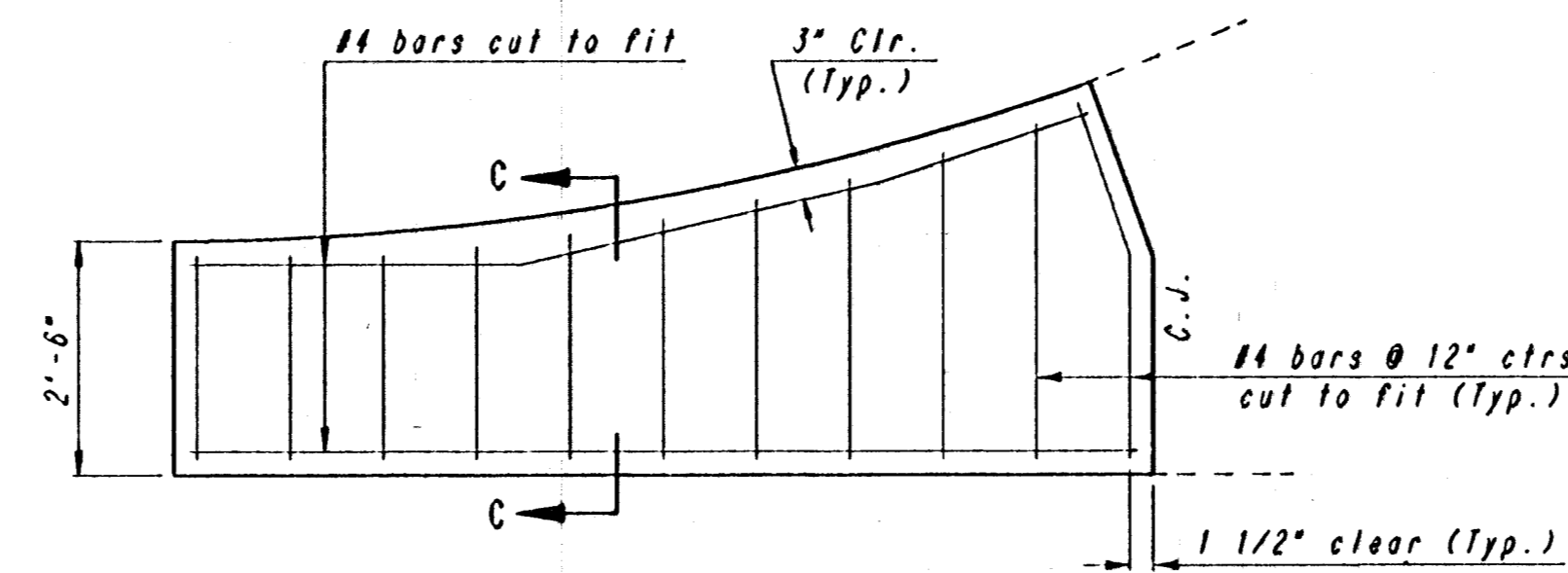
NOTE: OMIT REINFORCING MESH AT ALL JOINTS  
 NOTE: ALL CONCRETE VALLEY GUTTER REINFORCEMENT SHALL BE ADEQUATELY SUPPORTED BY BAR CHAIRS IN THE REQUIRED POSITION UNLESS APPROVED OTHERWISE BY THE ENGINEER.



DETAIL B

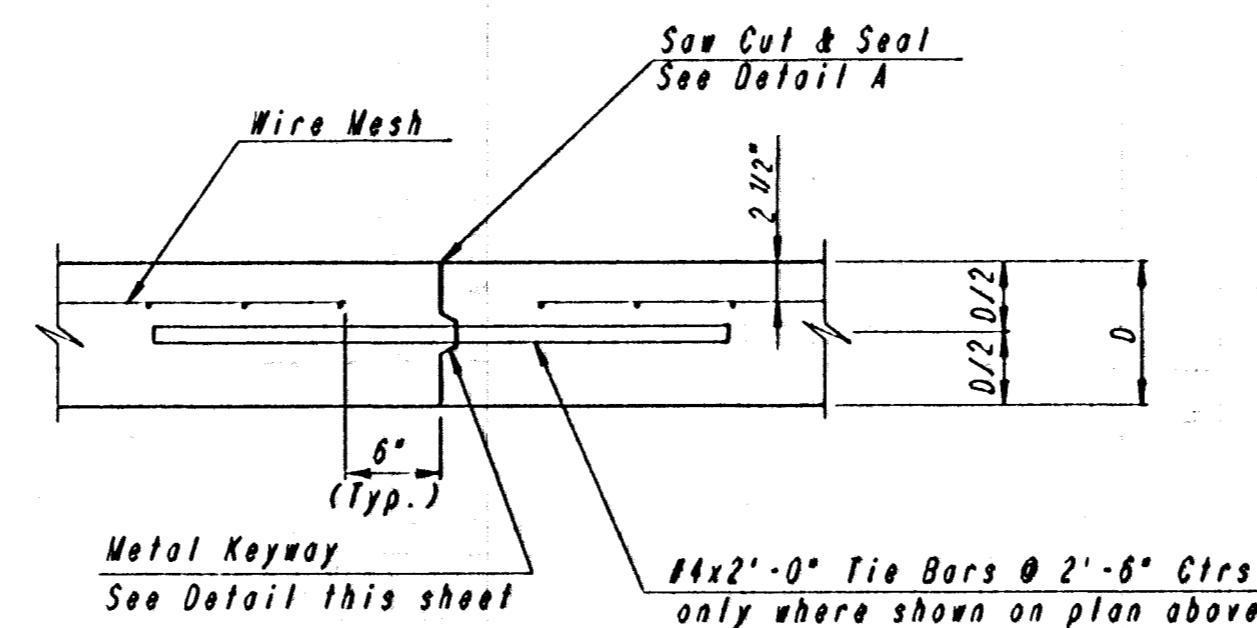


KEYWAY DETAIL

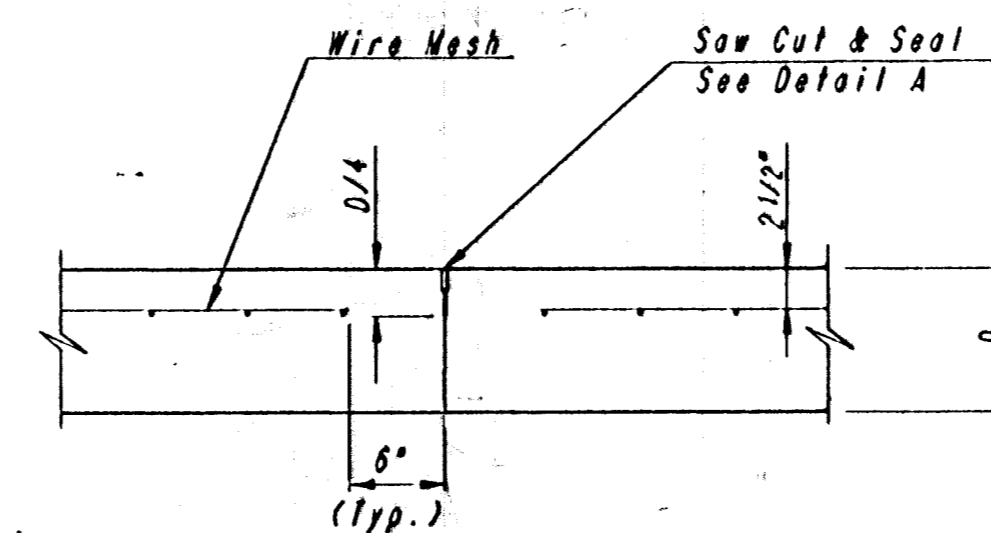


WING REINFORCING DETAIL

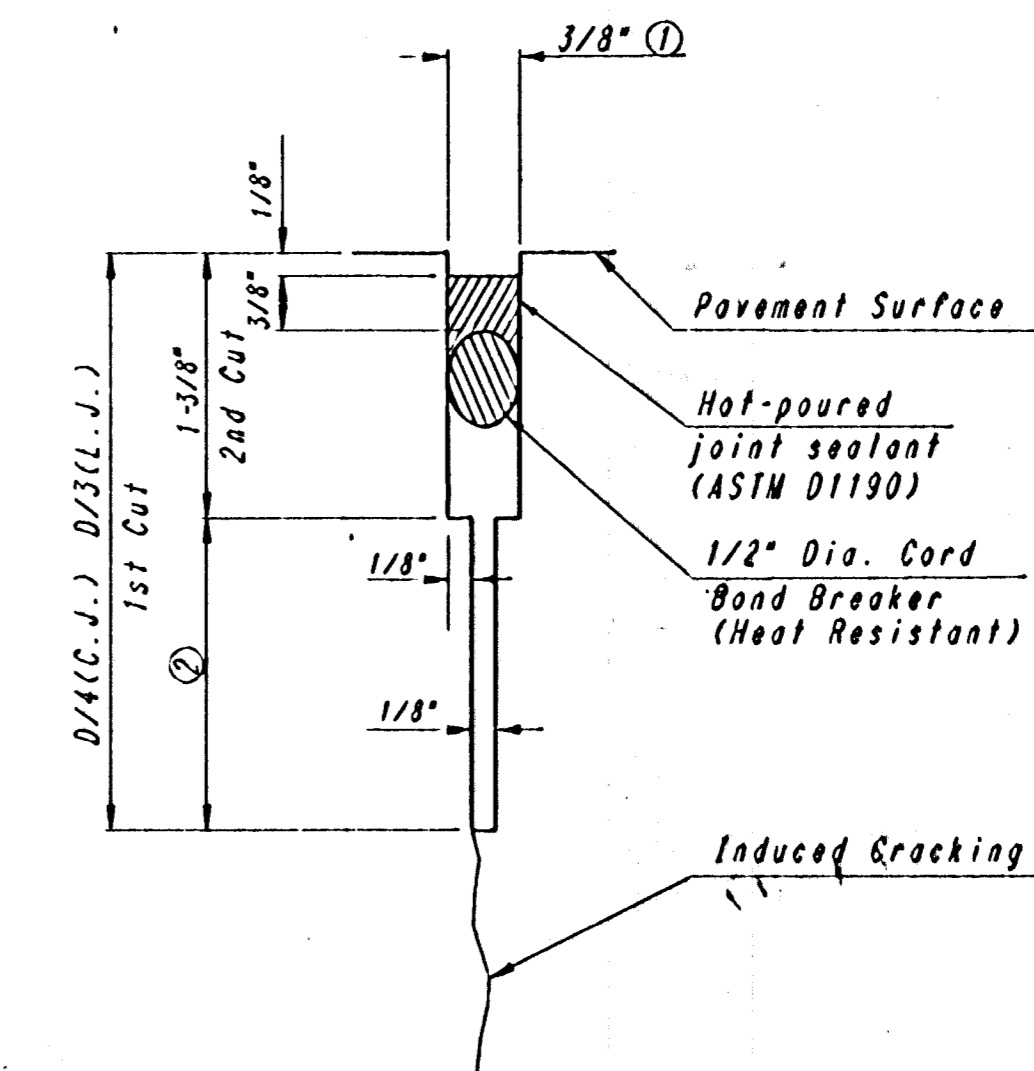
NOTE: OMIT WIRE FABRIC REINFORCING IN THIS SECTION.



LONGITUDINAL CONSTRUCTION JOINT DETAIL  
 REINFORCED PAVEMENT  
 (TRANSVERSE SECTION)  
 (ALTERNATE L.J.)

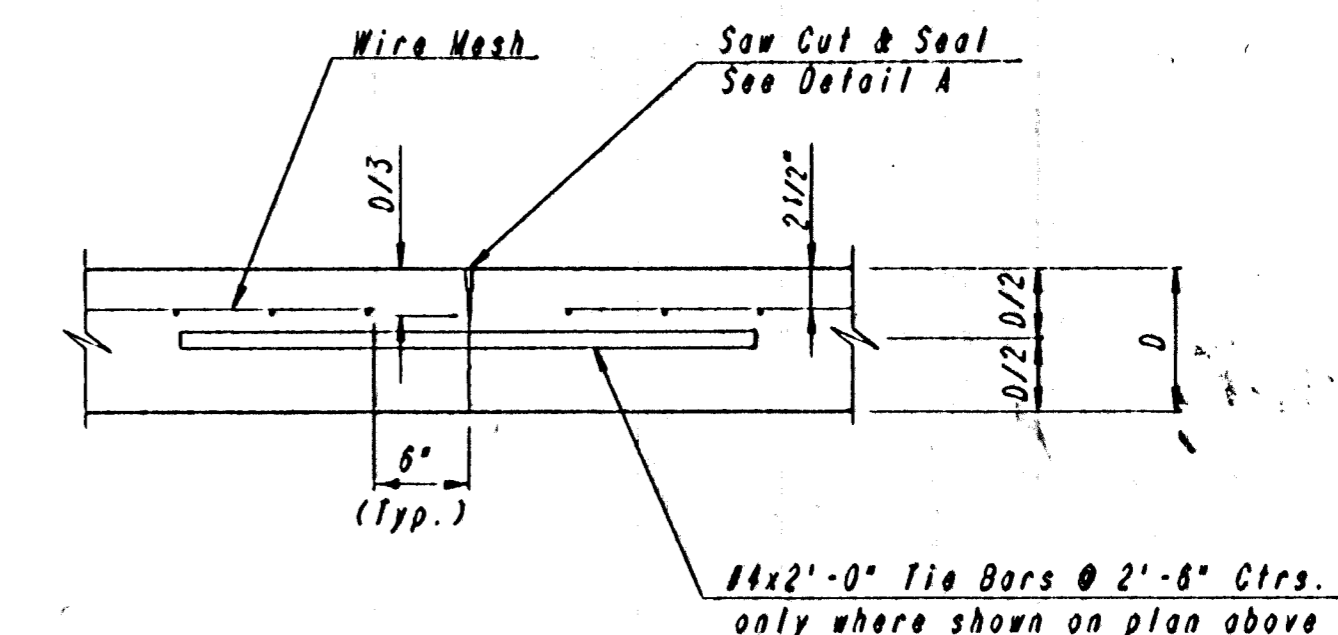


CONTRACTION JOINT DETAIL  
 REINFORCED PAVEMENT  
 (C.J.)



DETAIL A

- To be accomplished in 2 cuts for Longitudinal Joints & Contraction Joints. Initial cut to be 1/8" wide.
- Eliminate bottom of cut when metal keyway is used as part of Longitudinal or Transverse Construction Joint and at Doweled Construction Joint Locations.



LONGITUDINAL JOINT DETAIL  
 REINFORCED PAVEMENT  
 (TRANSVERSE SECTION)  
 (L.J.)

DRAWING NAME: 36-92005 VAL GUT DTLS  
 LOCATION: D4 41078  
 CENTER COORDINATES:  
 DATE: LAST REVISED ON: 1/19/95  
 BRENT WEISSBERG

REV.	DATE	DESCRIPTION

HELLMUTH, OBATA & KASSEBAUM, INC.  
 DALLAS, TEXAS  
 PROFESSIONAL ENGINEERING  
 CONSULTANTS, P.A.  
 WICHITA, KANSAS  
 BRAD J. GOLDBERG  
 DALLAS, TEXAS

MUSEUM DISTRICT ROADWAY AND  
 PEDESTRIAN IMPROVEMENTS  
 WICHITA, KANSAS

VALLEY GUTTER DETAILS

PROJECT NO. 11 JULY 1997 SHEET PA