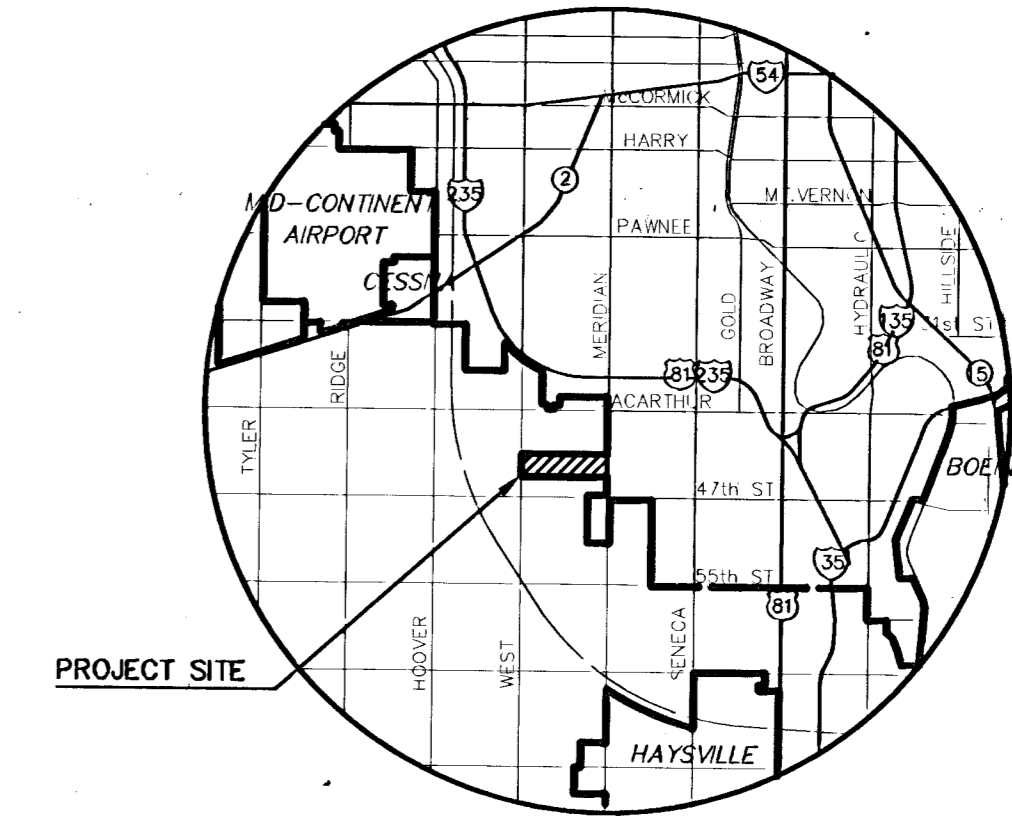


PAVING AND INCIDENTAL DRAINAGE PLANS FOR THE LEGACY ADDITION PHASE 2

FEBRUARY 2002
PROJECT NO. 472-83440

CITY OF WICHITA, KANSAS
MICHAEL E. LINDEBAK, CITY ENGINEER
O.C.A. 765707



PROJECT SITE

LOCATION MAP

*DRAINAGE BOOKED
1-13-03
MCG
C-739*

GENERAL NOTES

- UNLESS SHOWN OR STATED OTHERWISE ON THESE DRAWINGS, MATERIALS AND CONSTRUCTION SHALL BE IN ACCORDANCE WITH CITY OF WICHITA CONCRETE PAVEMENT AND ASPHALTIC CONCRETE PAVEMENT SPECIFICATIONS.
- THE CONTRACTOR SHALL BE RESPONSIBLE FOR PRESERVING PROPERTY IRONS. THE CONTRACTOR WILL BE REQUIRED TO RE-ESTABLISH ANY PROPERTY IRONS WHICH ARE DAMAGED OR DESTROYED BY HIS CONSTRUCTION OPERATIONS. SUCH IRONS SHALL BE RE-ESTABLISHED BY A LICENSED LAND SURVEYOR IN ACCORDANCE WITH STATE LAWS.
- TRANSITION CURB FROM FULL HEIGHT COMBINATION CURB AND GUTTER TO ROLL TYPE COMBINATION CURB AND GUTTER IS TO BE PAID AS BID FOR LINEAL FEET COMBINED CURB AND GUTTER (3 5/8" ROLL).
- EXISTING UTILITIES AND THEIR LOCATIONS, AS SHOWN ON THE PLANS REPRESENT THE BEST INFORMATION OBTAINABLE FOR DESIGN. LOCATION INFORMATION HAS BEEN OBTAINED FROM THE VARIOUS UTILITY COMPANIES AND IS EITHER FROM COMPANY RECORD DRAWINGS OR COMPANY PROVIDED FIELD LOCATIONS. THE PLAN LOCATIONS SHOWN ARE NOT GUARANTEED. ADDITIONAL EXISTING UTILITIES MAY ALSO BE ENCOUNTERED.
- CONTRACTOR WILL BE REQUIRED TO PROVIDE A MINIMUM ADVANCE NOTICE OF FORTY-EIGHT (48) HOURS TO UTILITY COMPANIES PRIOR TO STARTING ANY EXCAVATION AS FOLLOWS:

KANSAS ONE-CALL 1-800-344-7233
OR 687-2470 (LOCAL WICHITA)

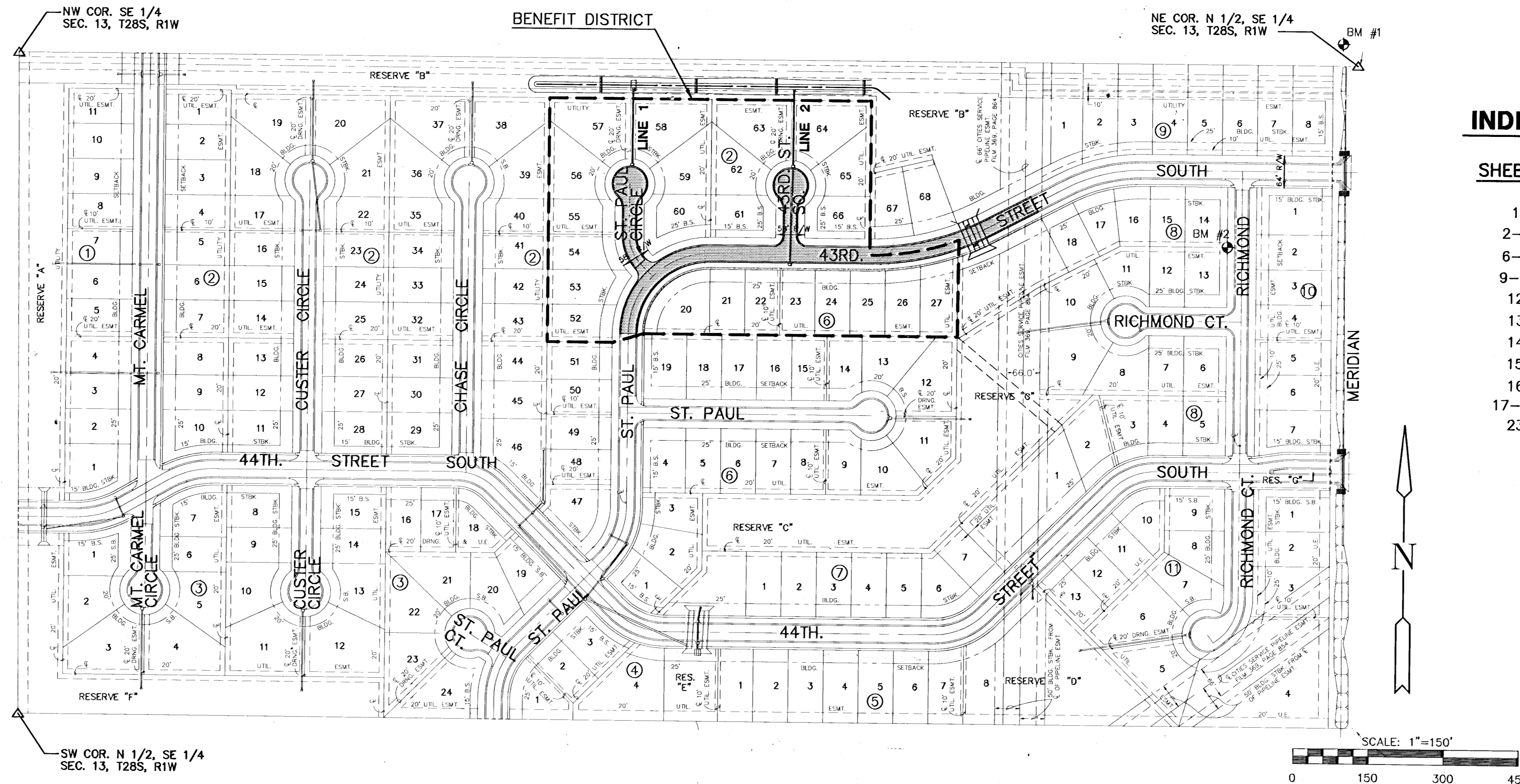
THE CONTRACTOR MUST NOTIFY THE FOLLOWING IN CASE OF AN EMERGENCY:

SOUTHWESTERN BELL TELEPHONE COMPANY 1-800-734-7590
CABLEVISION 262-0661
KG&E (GAS) 832-0012
KG&E (ELECTRIC) 264-1141
CITY OF WICHITA WATER & SEWER DEPT. 268-4908
- RUBBLE FROM THE REMOVAL OF MISCELLANEOUS STRUCTURES AND EXCESS EXCAVATION WHICH IS TO BE WASTED SHALL BE DISPOSED OF ON SITES TO BE PROVIDED BY THE CONTRACTOR. THESE SITES SHALL BE APPROVED BY THE ENGINEER AS TO SUITABILITY, APPEARANCE AND SITE LOCATION. LOCATIONS THAT, IN THE OPINION OF THE ENGINEER, WILL LEAVE AN UNSIGHTLY APPEARANCE WILL NOT BE APPROVED. ALL DISPOSAL SITES MUST BE APPROVED BY THE KANSAS DEPARTMENT OF HEALTH AND ENVIRONMENT. MATERIAL EITHER STOCKPILED OR DISPOSED OF IN A FLOOD PLAIN WOULD REQUIRE A KANSAS STATE BOARD OF AGRICULTURE PERMIT. ANY MATERIAL DUMPED IN WATERS OF THE UNITED STATES OR WETLANDS IS SUBJECT TO U.S. CORPS OF ENGINEERS PERMITTING REGULATIONS. ANY MATERIAL BURIED OR STOCKPILED BEYOND APPROVED CONSTRUCTION LIMITS WOULD REQUIRE ADDITIONAL ARCHAEOLOGICAL INVESTIGATIONS UNLESS BURIED IN A PREVIOUSLY APPROVED BORROW LOCATION.
- A SAW CUT OF AT LEAST ONE-HALF THE DEPTH OF THE EXISTING SURFACE COURSES OR ONE-FOURTH THE DEPTH OF THE EXISTING TOTAL PAVEMENT THICKNESS SHALL BE PROVIDED AT LOCATIONS WHERE PROPOSED CONSTRUCTION ABUTS AN EXISTING SURFACE OR PAVEMENT FOR WHICH PARTIAL REMOVAL OF THAT SURFACE OR PAVEMENT IS REQUIRED. A SAW JOINT TO FACILITATE REMOVAL WITHIN THREE (3) FEET OF EXISTING JOINTS WILL NOT BE PERMITTED AND FOR SUCH INSTANCES THE LIMITS OF REMOVAL SHALL EXTEND TO THE EXISTING JOINT. SUCH SAW CUTS WILL NOT BE PAID FOR DIRECTLY AND THIS COST SHALL BE CONSIDERED AS SUBSIDIARY TO THE REMOVAL OF SURFACE OR PAVEMENT.
- TREES TO BE REMOVED ARE MARKED . ALL TREES WHICH IN THE OPINION OF THE FIELD ENGINEER CAN BE SAVED, SHALL BE SAVED. REMOVAL OF TREES SHALL BE CONSIDERED AS SUBSIDIARY TO SITE PREPARATION & RESTORATION.
- ALL DISTURBED AREAS TO BE SEEDED WITH RYE GRASS AT A RATE OF 200LBS./ ACRE WITHIN 10 DAYS OF CONSTRUCTION. COST SHALL BE CONSIDERED AS SUBSIDIARY TO SITE PREPARATION & RESTORATION.
- CONTRACTOR SHALL COORDINATE THE WASTING OF EXCESS MATERIAL ON SITE, WITH THE OWNER (BUILDERS INC., ELTON PARSONS 685-9661) OR HIS REPRESENTATIVE (MKEC 684-9600).
- ROUGH GRADING FOR THE STREETS HAS BEEN COMPLETED WITH MASS GRADING. SOME FINAL GRADING WILL BE REQUIRED WITH THIS PROJECT.

ST. PAUL/43RD. ST. SOUTH, FROM THE SOUTH LINE OF LOT 52, BLOCK 2 TO THE WEST LINE OF 18, BLOCK 8, THE LEGACY

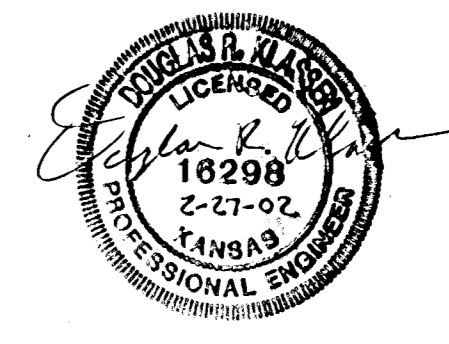
ST. PAUL CIRCLE, FROM THE NORTH LINE OF ST. PAUL TO AND INCLUDING THE CUL-DE-SAC SERVING LOTS 54 THROUGH 60, BLOCK 2, THE LEGACY

43RD. ST. COURT SOUTH, FROM THE NORTH LINE OF 43RD ST. SOUTH TO AND INCLUDING THE CUL-DE-SAC SERVING LOTS 61 THROUGH 66, BLOCK 2, THE LEGACY



INDEX TO DRAWINGS

SHEET NO.	DESCRIPTION
1	TITLE SHEET
2-5	DETAILS
6-8	EROSION DETAILS
9-11	ST. PAUL/43RD. ST. SO. PAVING PLAN
12	ST. PAUL CIRCLE PAVING PLAN
13	43RD. ST. COURT SO. PAVING PLAN
14	INLET DETAILS
15	STORM WATER SEWER LINE 1
16	STORM WATER SEWER LINE 2
17-22	CROSS SECTION
23	FINAL PLAN



SCALE: 1"=150'
0 150 300 450

BENCHMARK

BM #1 MERIDIAN AND 43RD. ST. SOUTH
C.O.W. BENCHMARK. 44' N. &
30' E. OF 1/4 SEC. COR.
ELEV.= 93.40

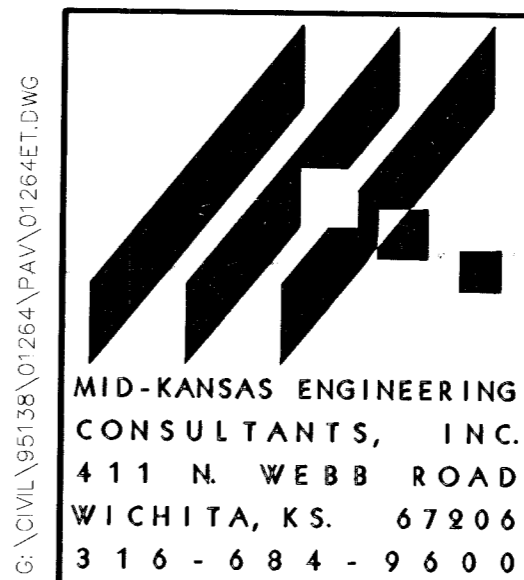
BM#2 TOP OF IRON AT NORTHEAST CORNER OF
LOT 13, BLOCK 8
ELEV.=95.42

LENGTH OF PROJECT

29' BK.-BK. 337.5 FT.
35' BK.-BK. 921 FT.

EARTHWORK SUMMARY

EXCAVATION 0 C.Y.
LOOSE FILL 0 C.Y.
COMPACTED FILL 0 C.Y.



THE LEGACY ADDITION
PROJECT NAME

PAVING PLANS
SHEET TITLE

DK DESIGN BY: DM DRAWN BY: DK CHECKED BY:

JANUARY 2002 DATE 01264DT JOB NO. 1 / 23 SHEET/OF

6:\CIVIL\951581\01264PAV\01264E1.DWG Thu Feb 28 01:36:41 2002