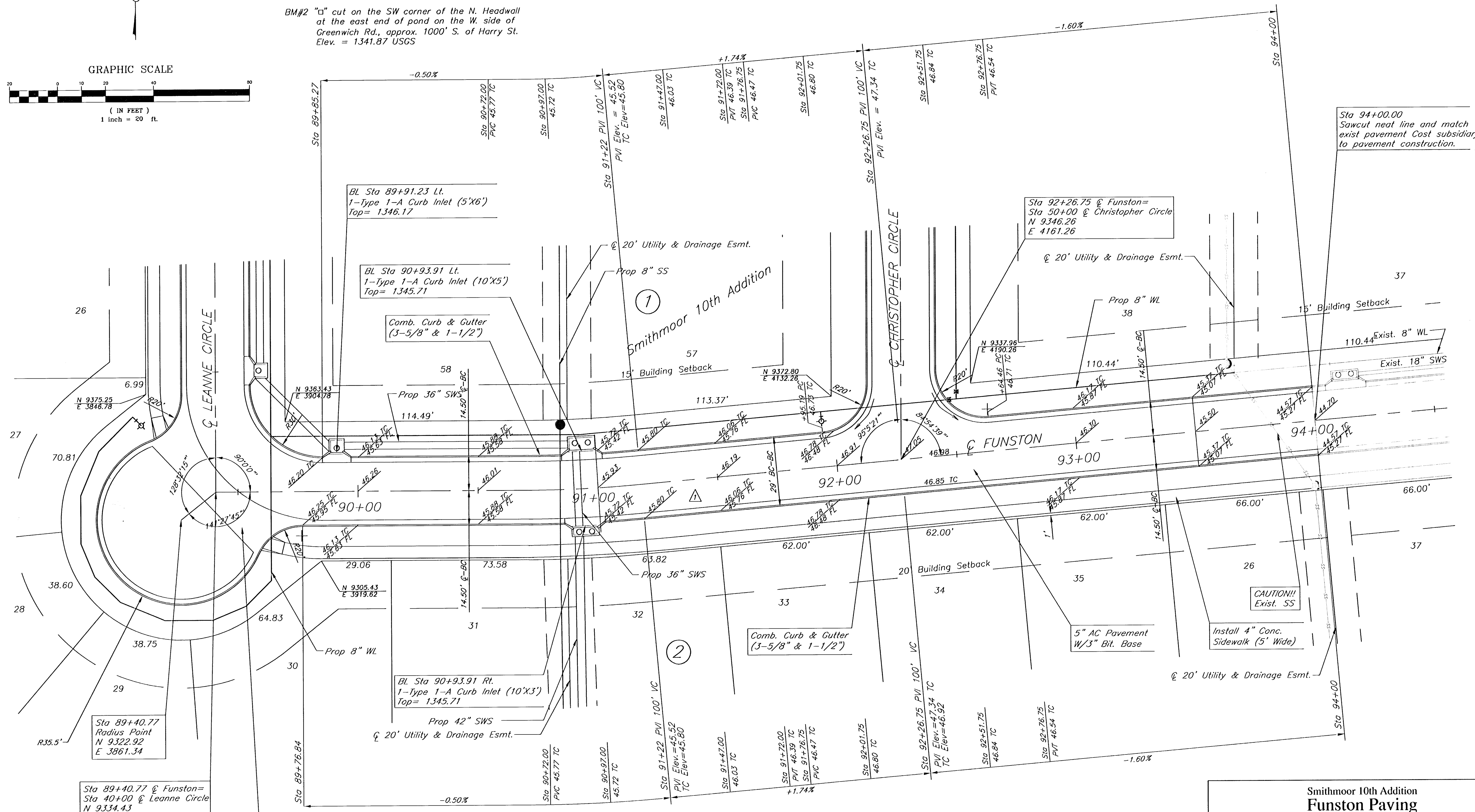


BENCHMARKS:

BM#1 City disc on the SW corner traffic signal base on the NE corner of the intersection of Harry St. and Greenwich Rd. Elev. = 1343.49 USGS

BM#2 "a" cut on the SW corner of the N. Headwall at the east end of pond on the W. side of Greenwich Rd., approx. 1000' S. of Harry St. Elev. = 1341.87 USGS

No.	Street and Station	From CL	Description	Elevation
1	Sta 41+86.81 Leanne Circle	14.25'	East curb line Leanne Circle in line with Funston, 1041' West of Greenwich	
2	Sta 55+46.14 Christopher Circle	14.25'	West curb line Christopher Circle in front of fire hydrant, 805' West of Greenwich	



CURVE NO.	Δ	RADIUS	LENGTH	CHORD	CHORD BEARING
1	5° 5' 21"	500.00'	44.41'	44.40'	S 87°27'20" W
2	38° 8' 58"	200.00'	133.17'	130.72'	N 70°58'21" E

**Smithmoor 10th Addition
Funston Paving
Wichita, Kansas**

		PROJECT NUMBER 472-83396	
		KEY NO. 01083	FILE PVPLANI.dwg
DESIGN RR	DRAWN	DATE 1/02	SHEET 3
516 S. Market, Wichita, KS 67202		318/284-0242	REVISED OF 24

Sta 89+40.77 @ Funston=
Sta 40+00 @ Leanne Circle
N 9334.43
E 3875.78

Sta 89+40.77
Radius Point
N 9322.92
E 3861.34

BL Sta 90+93.91 Rt.
1-Type 1-A Curb Inlet (10'X3')
Top= 1345.71

N 9305.43
E 3919.62

N 9363.43
E 3904.78

Sta 92+26.75 @ Funston=
Sta 50+00 @ Christopher Circle
N 9346.26
E 4161.26

Sta 94+00.00
Sawcut neat line and match
exist pavement Cost subsidiary
to pavement construction.

7" RCVG Pavement with
Mono Edge Curb
See Sheet 9