

# CITY OF WICHITA, KANSAS

## MICHAEL E. LINDEBAK, P.E., CITY ENGINEER

# STREET IMPROVEMENTS

### WOODLAWN - DECEL AND LEFT TURN LANES

### FOR

## WHISPERING BROOK COMMERCIAL 2ND ADDITION

### CITY OF WICHITA PROJECT NO. 472-83329

### OCA NO. 765690

**INDEX OF SHEETS**

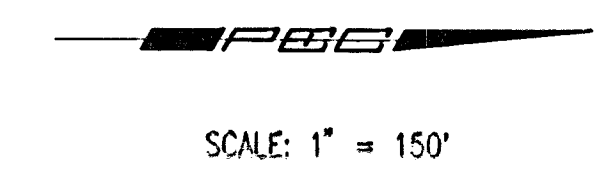
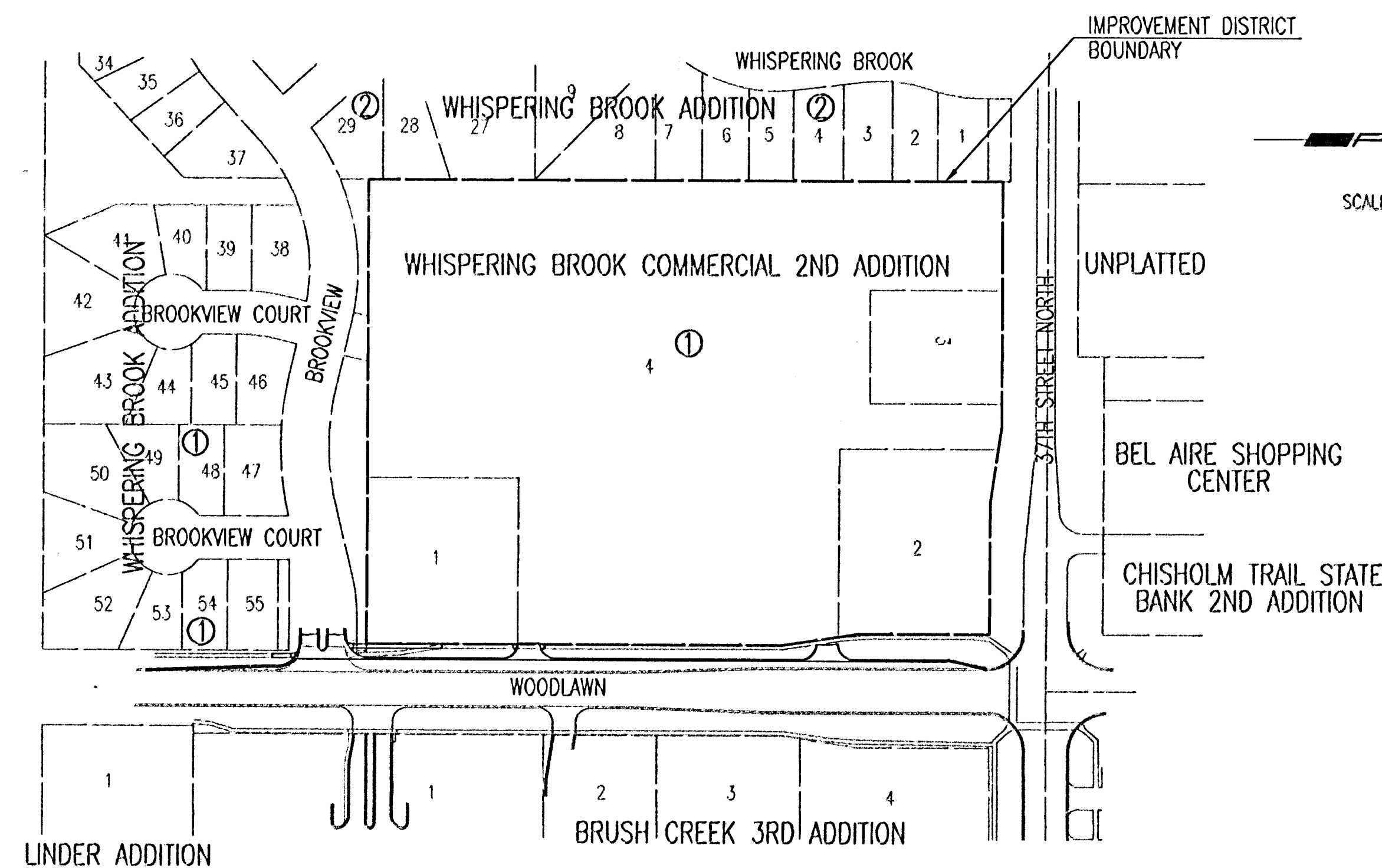
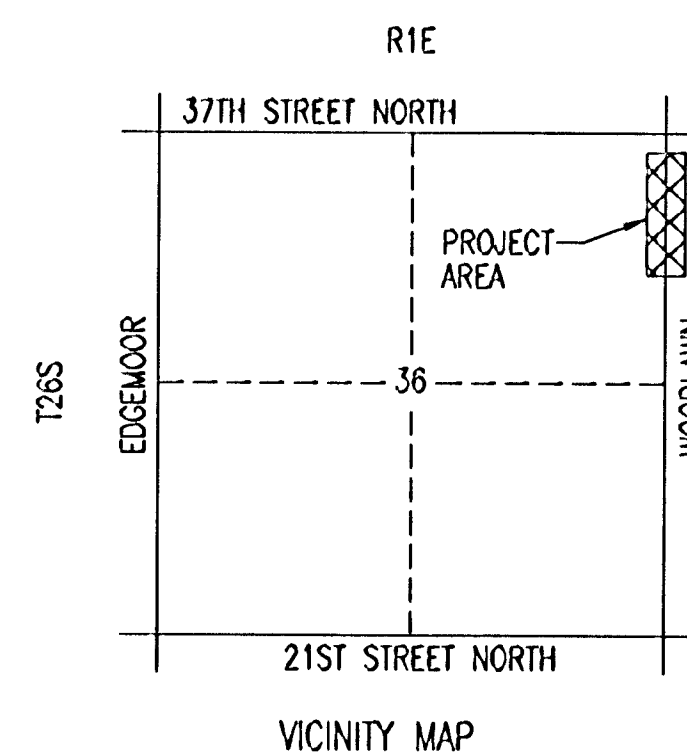
1. TITLE SHEET
2. PLATS
3. TYPICAL SECTIONS
- 4-5. PAVING PLANS - WOODLAWN
6. MARKING AND SIGNING PLAN
7. VALLEY CUTTER DETAILS
8. MISCELLANEOUS PAVING DETAILS
9. MISCELLANEOUS DRAINAGE DETAILS
10. STANDARD DRIVE ENTRANCES
11. TYPE 1A CURB INLET
12. FRAME AND COVER
13. SIGN DETAILS
14. LANDSCAPE PLAN
- 15-18. SOIL EROSION BMP DETAILS
- 19-23. CROSS SECTIONS

**PROJECT SURVEY CONTROL**

- CITY BM: C.O.W. BRASS DISC 76' EAST AND 56' SOUTH OF @ INTERSECTION WOODLAWN AND 37TH STREET NORTH. ELEV. 183.04
- BM A: RAILROAD SPIKE IN EAST FACE 3RD POWER POLE SOUTH OF 37TH STREET NORTH ON WEST SIDE OF WOODLAWN. ELEV. 183.37
- BM B: "I" POST 10' N.E. OF PROPERTY CORNER 320' WEST OF WOODLAWN AND 280' SOUTH OF 37TH STREET NORTH CENTERLINES. ELEV. 188.05
- BM C: CHISELED "d" ON S.W. CORNER CURB INLET 81' WEST OF @ WOODLAWN AND 30' NORTH OF @ 37TH STREET NORTH. ELEV. 185.05
- BM D: CHISELED "d" ON TOP OF EAST CURB AT HILLCREST STREET 30' NORTH OF @ 37TH STREET NORTH. ELEV. 193.22

**EARTHWORK**

- EXCAVATION 1507 CU. YDS.  
 COMPACTED FILL 0 CU. YDS.
- PROJECT LENGTH = 112.94 LIN. FT.
- EXCESS EXCAVATED MATERIAL TO BE DISPOSED OF BY THE CONTRACTOR, AS APPROVED BY THE ENGINEER.



**GENERAL NOTES**

UNDERGROUND UTILITY SERVICE LINES AND OVERHEAD UTILITY POLE LINES ARE TO BE ADJUSTED AS NECESSARY BY OTHERS PRIOR TO CONSTRUCTION UNLESS THE PLANS SPECIFICALLY CALL FOR THEIR ADJUSTMENT BY THE CONTRACTOR. EXISTING UTILITIES AND THEIR LOCATION, AS SHOWN ON THE PLANS, REPRESENT THE BEST INFORMATION OBTAINABLE FOR DESIGN. LOCATION INFORMATION HAS BEEN OBTAINED FROM THE VARIOUS UTILITY COMPANIES AND IS EITHER FROM COMPANY RECORD DRAWINGS OR COMPANY PROVIDED FIELD LOCATIONS. THE CONTRACTOR WILL BE REQUIRED TO WORK AROUND EXISTING UTILITIES WITHIN THE RIGHT-OF-WAY WHICH DO NOT CONFLICT WITH PROPOSED CONSTRUCTION.

TREES AND SHRUBS IN PUBLIC RIGHT-OF-WAY WHICH ARE IN DIRECT CONFLICT WITH PROPOSED NEW CONSTRUCTION SHALL BE REMOVED BY THE CONTRACTOR WITH THE ENGINEER'S APPROVAL. TREES AND SHRUBS WHICH ARE NOT IN DIRECT CONFLICT WITH PROPOSED NEW CONSTRUCTION SHALL BE SAVED AND PROTECTED FROM DAMAGE.

RUBBLE FROM THE REMOVAL OF MISCELLANEOUS STRUCTURES SHALL BE DISPOSED OF ON SITES TO BE PROVIDED BY THE CONTRACTOR AND APPROVED AS NOTED BELOW.

ALL DISPOSAL SITES MUST BE APPROVED BY THE KANSAS DEPARTMENT OF HEALTH AND ENVIRONMENT. MATERIAL EITHER STOCKPILED OR DISPOSED OF IN A FLOOD PLAIN WOULD REQUIRE A KANSAS STATE BOARD OF AGRICULTURE PERMIT. ANY MATERIAL DUMPED IN WATERS OF THE UNITED STATES OR WETLANDS IS SUBJECT TO U.S. CORPS OF ENGINEERS PERMITTING REGULATIONS. ANY MATERIAL BURIED OR STOCKPILED BEYOND APPROVED CONSTRUCTION LIMITS WOULD REQUIRE ADDITIONAL ARCHEOLOGICAL INVESTIGATIONS UNLESS BURIED IN A PREVIOUSLY APPROVED BORROW LOCATION.

CONTRACTOR SHALL SATISFY HIMSELF OF SURFACE AND SUBSURFACE CONDITIONS PRIOR TO BIDDING.

CONTRACTOR SHALL PROVIDE A MINIMUM FORTY-EIGHT (48) HOUR ADVANCE NOTICE (EXCLUDING WEEKENDS AND HOLIDAYS) PRIOR TO BEGINNING ANY EXCAVATION, TO KANSAS ONE-CALL SYSTEM, A UTILITY LOCATION SERVICE, AT (316) 687-2470 TO REQUEST THE FOLLOWING UTILITY COMPANIES TO LOCATE ALL EXISTING LINES WITHIN THE PROJECT AREA: K.G.S. GAS, PEOPLES NATURAL GAS, K.G.E. ELECTRIC, SOUTHWESTERN BELL TELEPHONE, COX COMMUNICATIONS, CITY OF WICHITA SEWER MAINTENANCE AND CITY OF WICHITA WATER DEPARTMENT.

THE CONTRACTOR SHALL BE RESPONSIBLE FOR PRESERVING PROPERTY IRONS. THE CONTRACTOR WILL BE REQUIRED TO RE-ESTABLISH ANY PROPERTY IRONS WHICH ARE DAMAGED OR DESTROYED BY HIS CONSTRUCTION OPERATIONS. SUCH IRONS SHALL BE RE-ESTABLISHED BY A LICENSED LAND SURVEYOR IN ACCORDANCE WITH STATE LAWS.

THE WATER DEPARTMENT SHALL FIELD LOCATE WATER VALVES ONE TIME DURING CONSTRUCTION WHEN REQUESTED BY THE CONTRACTOR. IT SHALL BE THE CONTRACTOR'S RESPONSIBILITY TO PRESERVE SUCH FIELD LOCATIONS DURING THE CONSTRUCTION PROCESS. WATER VALVES, WATER VALVE BOXES OR FIRE HYDRANTS DAMAGED DURING CONSTRUCTION SHALL BE REPAIRED BY THE CONTRACTOR AT HIS OWN EXPENSE.

THE CONTRACTOR SHALL ADJUST WATER VALVE BOXES AS DIRECTED BY THE ENGINEER. THIS WORK TO BE SUBSIDIARY TO OTHER BID ITEMS.

INLET HOOKUPS SHALL BE BID PER EACH REGARDLESS OF INLET SIZE.

## AUGUST, 2001

PLANS PREPARED BY

PROFESSIONAL ENGINEERING CONSULTANTS, P.A.  
 ENGINEERS  
 WICHITA, KANSAS



DSWR: BER OPER: DEP SCALE: 1"=150.00  
 C:\2001\01034\0001\Woodlawn\STRITILE 11-13-2001 01:20:17 pm