

PAVEMENT IMPROVEMENTS

ACCEL - DECEL LANE ALONG THE SOUTH SIDE OF KELLOGG AVE
 FROM APPROX. 600 FT. WEST OF ELLSON TO THE E.L. OF ZELTA;
 INTERSECTION SIGNALIZATION, MAJOR ENTRANCES; MEDIAN CHANNELIZATION; & LEFT TURN LANES
 TO SERVE

ONE KELLOGG PLACE 2ND ADDITION

Lots 1 through 12, Block A

CITY OF WICHITA, KANSAS

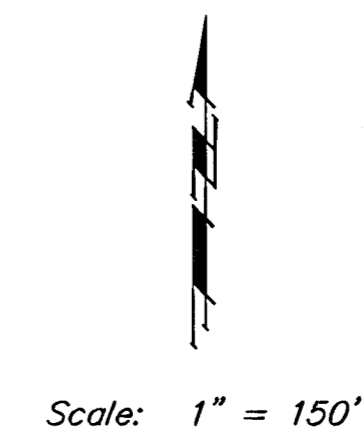
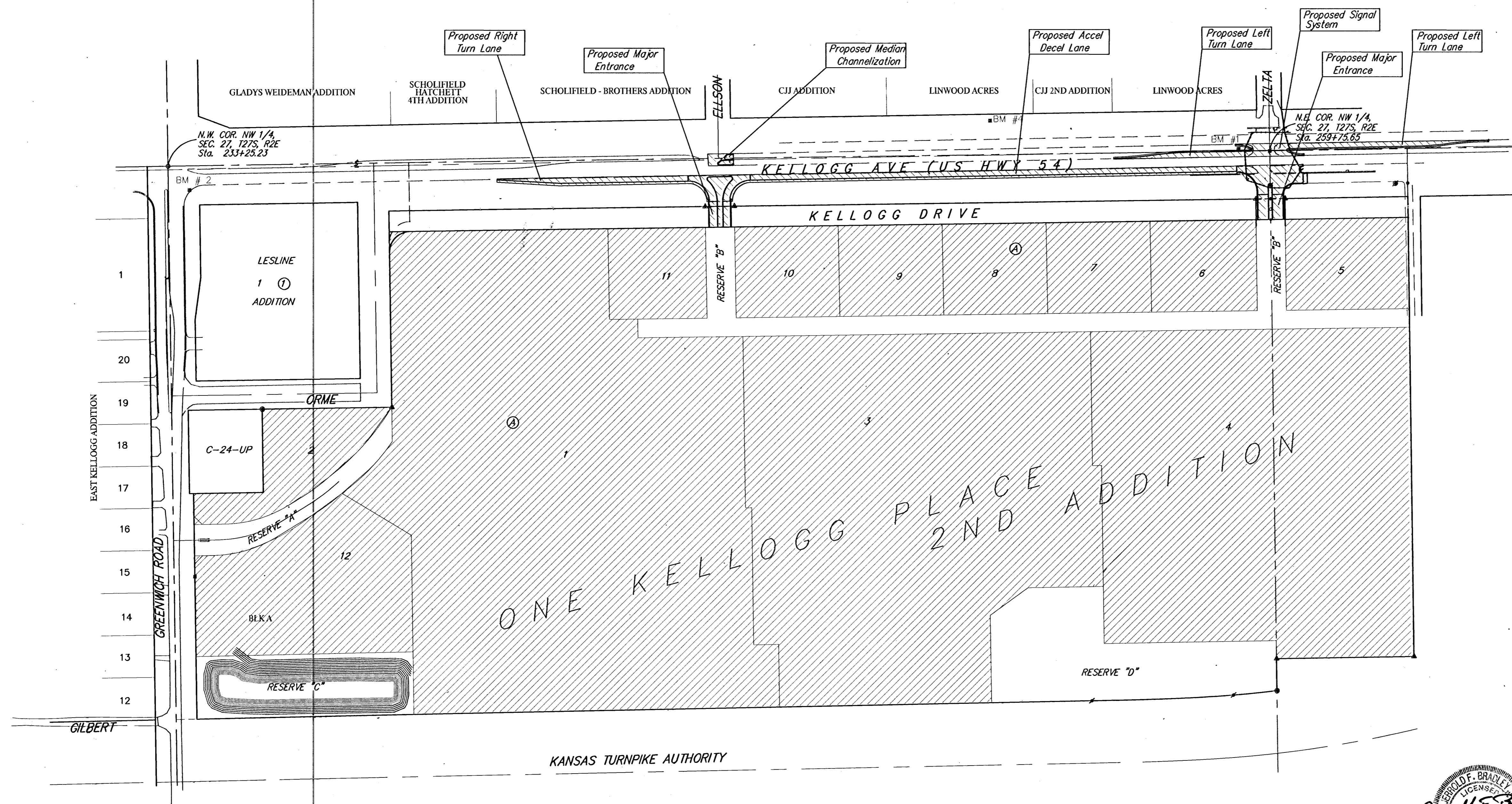
Michael E. Lindebak, P.E. City Engineer

Project Number

472-83372

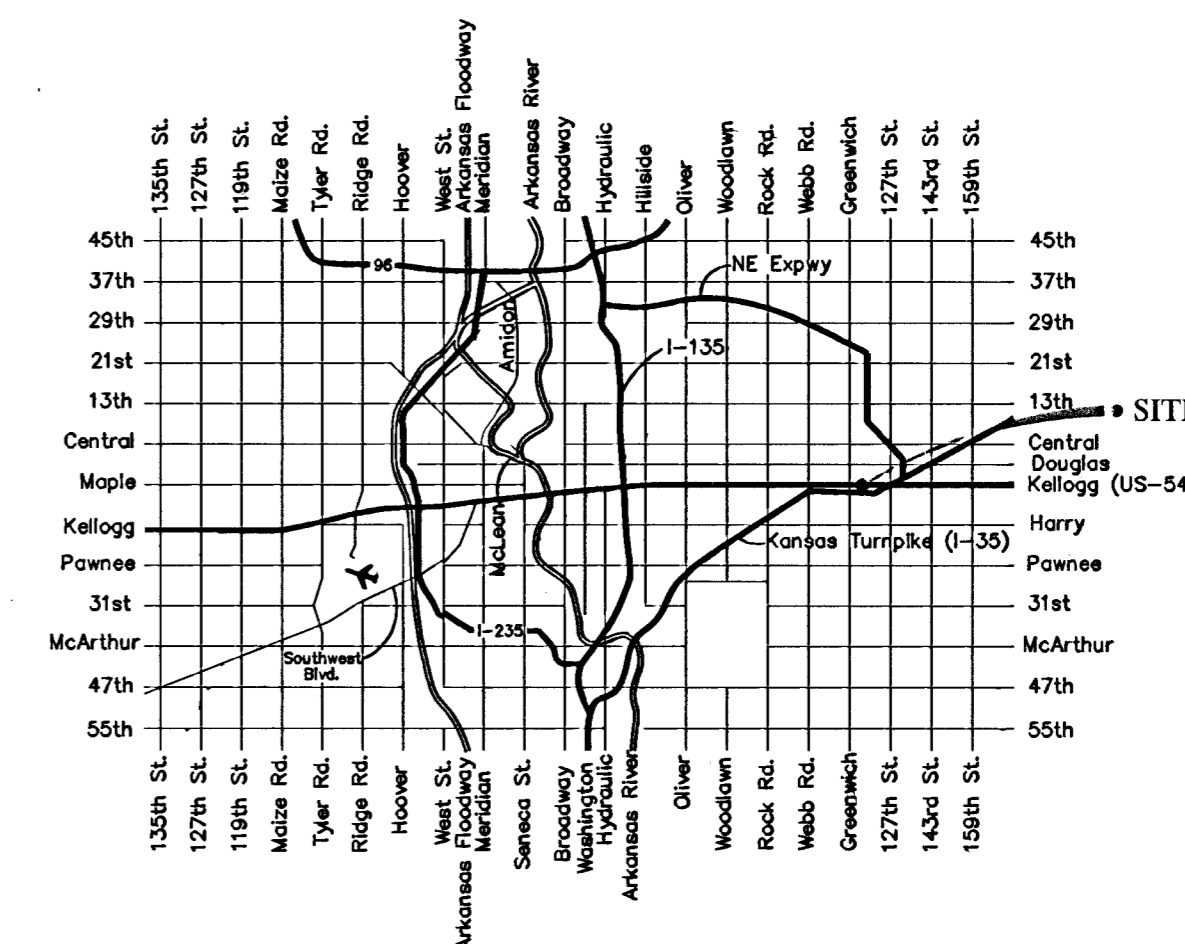
O.C.A. Number

765683





Sheet Index

Title Page	1
General Notes	2
Typical Pavement Sections	3
Paving Details	4
Paving Plans	5-9
RCB & Storm Sewer Details	10-14
Traffic Signal Plan	15
Traffic Signal Wiring Plan	16
Traffic Signal Details	17-21
Guard Fence Details	22
Pavement Marking Plans	23-27
Pavement Marking Detail	28
Traffic Control Details	29-33
Seeding & Erosion Control Details	34-37
Earthwork Cross Sections	38-45
Copy of Plat	46



Vicinity Map

Improvement District 
 Proposed Improvements 



BAUGHMAN COMPANY, P.A.
 ENGINEERING, SURVEYING, & PLANNING
 316-262-7271 • 315 ELLIS • WICHITA, KANSAS 67211

SHEET 1 OF 46

F:\Kellog_gr\Kellogg_Pavcov1.dwg