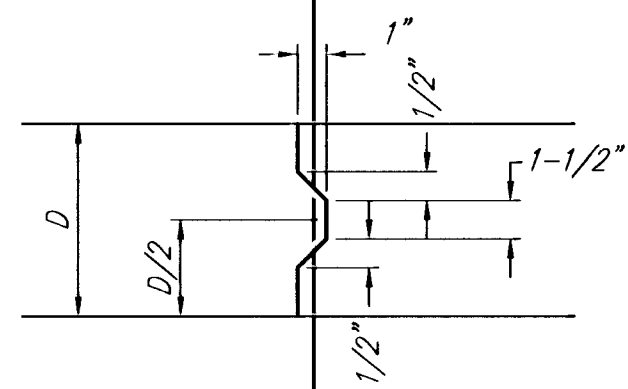
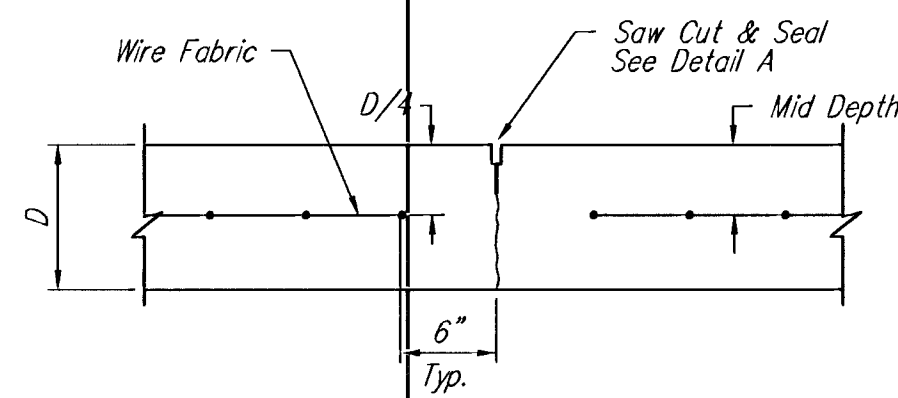


**EXPANSION JOINT**

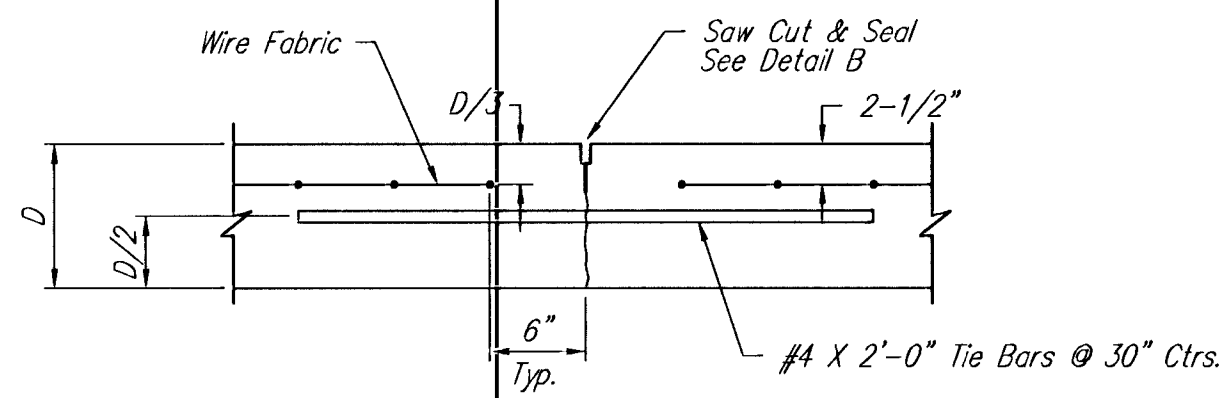
NOTE: Extra Thickness to be Subsidiary to Price of Square Yards Pavement



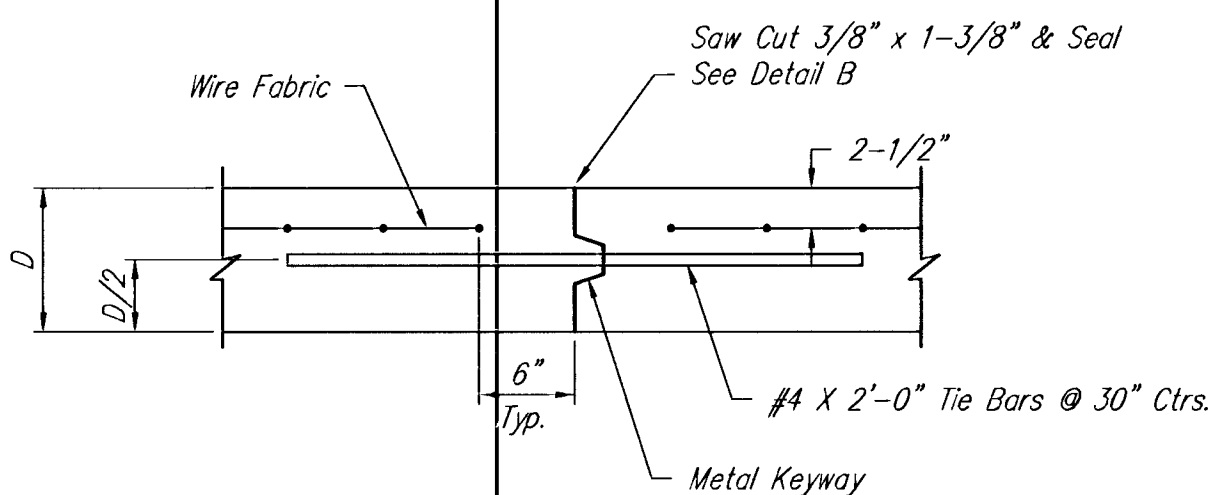
**KEYWAY DETAIL**



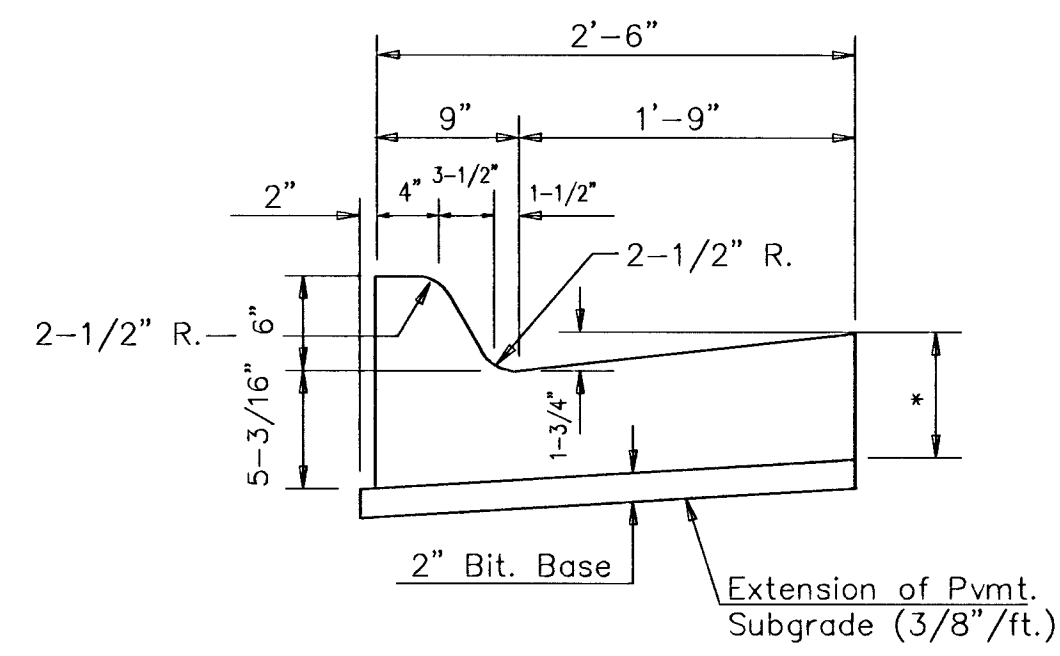
**CONTRACTION JOINT DETAIL (C.J.)**



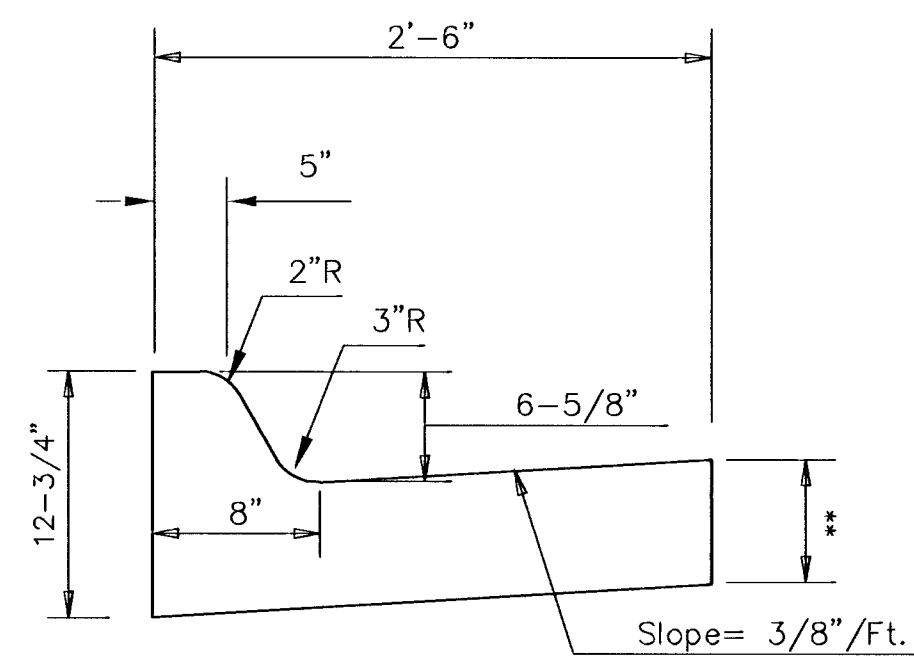
**LONGITUDINAL JOINT DETAIL (L.J.)**



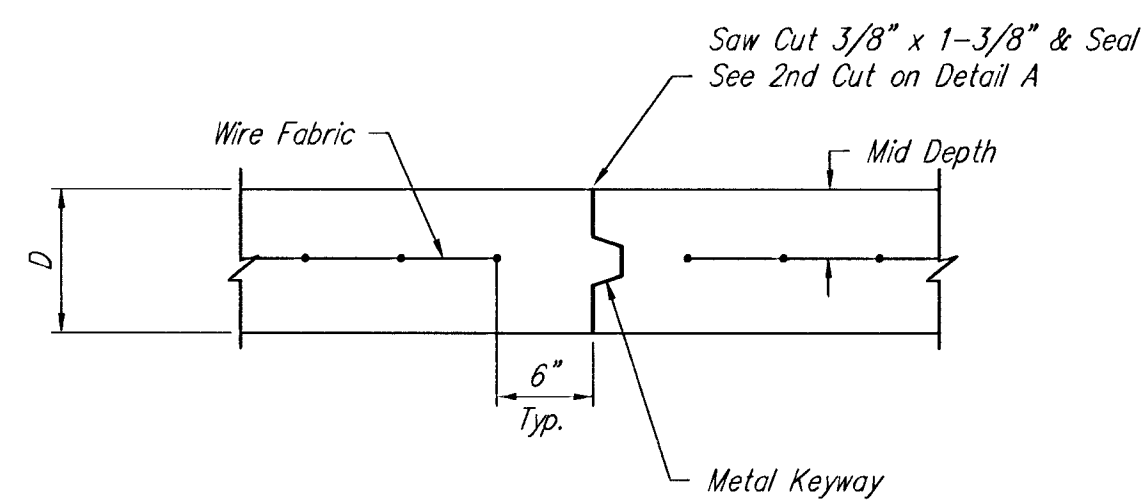
**OPTIONAL LONGITUDINAL JOINT DETAIL (L.J.) (CONSTRUCTION JOINT)**



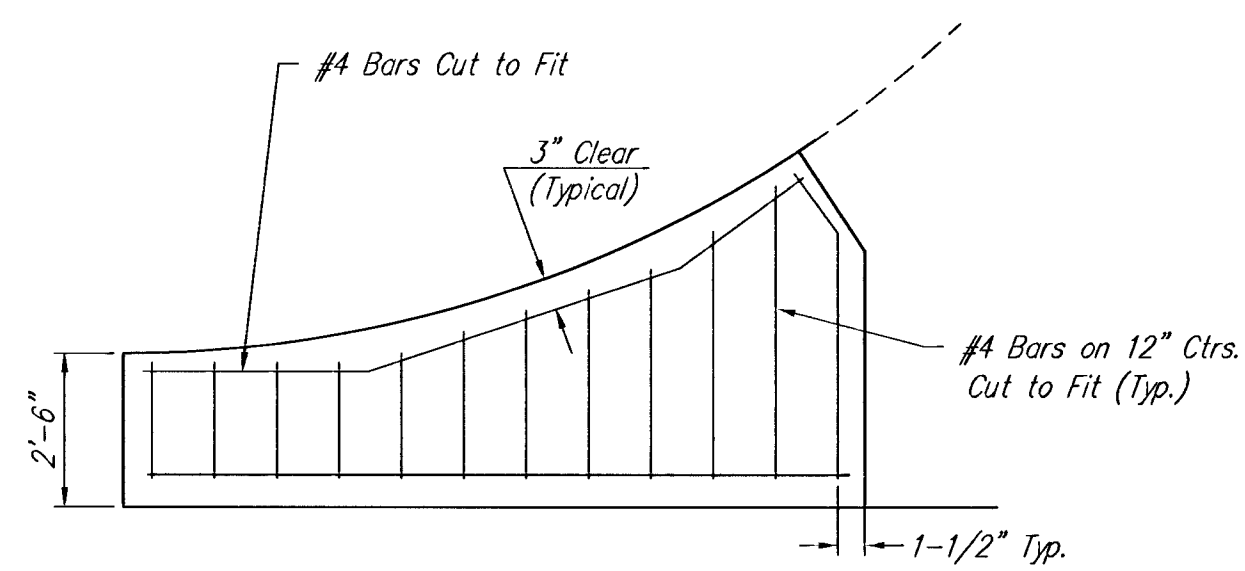
**COMBINED CURB & GUTTER - (6")**



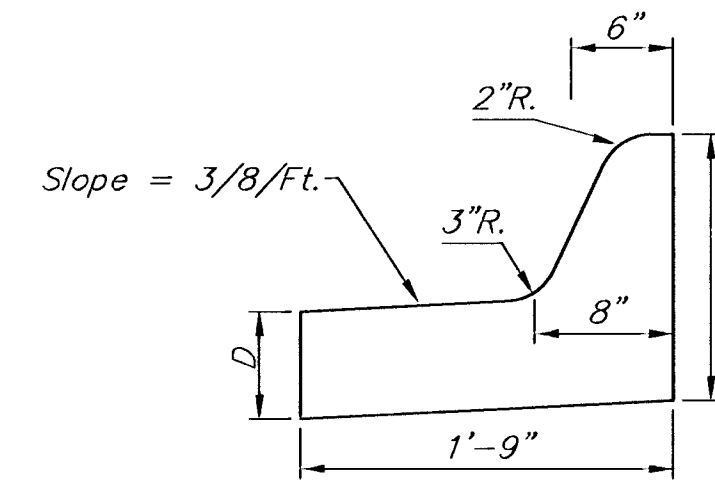
**COMBINED CURB & GUTTER - (6-5/8")**



**OPTIONAL CONTRACTION JOINT (CONSTRUCTION JOINT)**



**WING REINFORCING DETAIL**

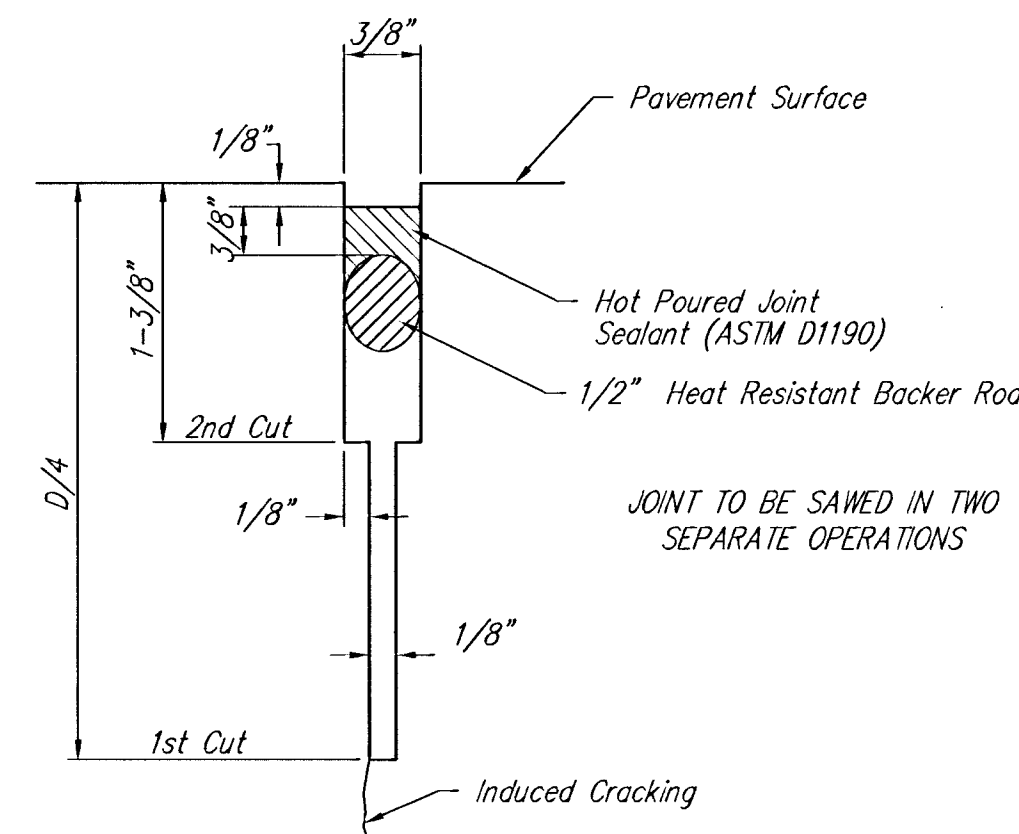


**MEDIAL CURB DETAIL**

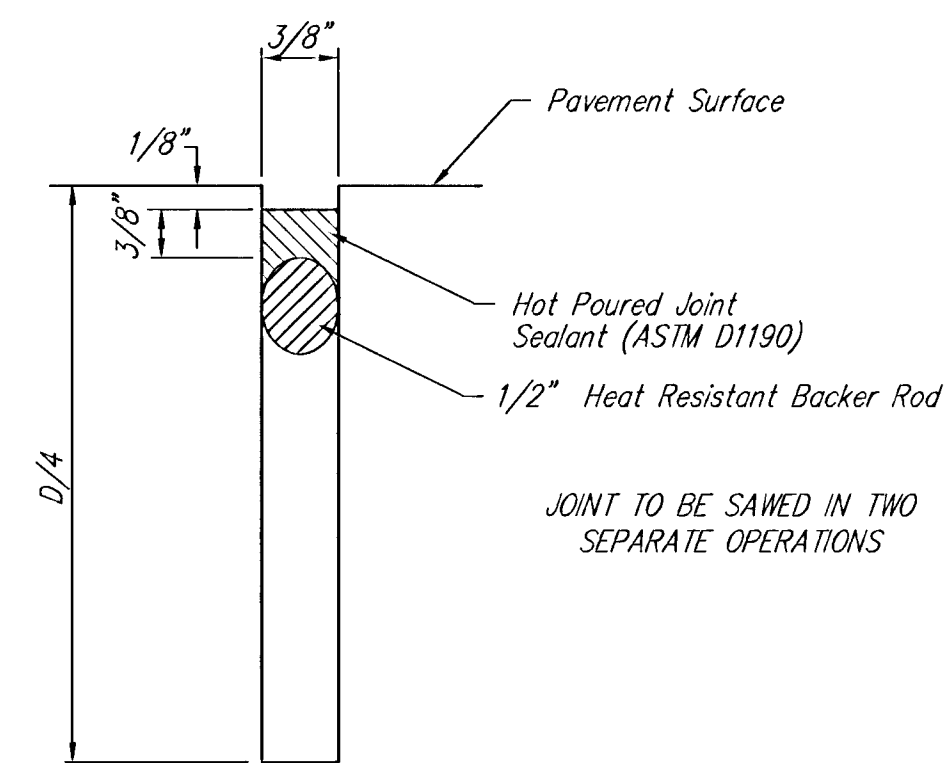
(Low Edge)

Not to Scale

Note: To be paid as Medial Curb & Gutter (6 5/8")



**SAW JOINT DETAIL "A"**



**SAW JOINT DETAIL "B"**

\* Thickness of curb to adjust with pavement thickness (6"min)  
Use 6" Curb thickness if pavement is greater than 8".

\*\* Thickness of curb to adjust with pavement thickness  
Use 5" Curb thickness if pavement is greater than 7"

NOTE: 6" X 12" W4XW4 Wire Fabric Reinforcing Shall Be Placed So That The Wires With The 6" Spacing Will Run Parallel With The Longitudinal Joints.

PROJECT NUMBER 472-83372	SHEET NAME Pavdetail	ENGINEERING DIRECTORY F:\Kellog gr
DESIGN STAFF	APPROVED STAFF	DATE MAY 01
DRAWN STAFF	SCALE NONE	BAUGHMAN NO 01 01 E914

ONE KELLOGG PLACE 2ND ADDITION  
**PAVEMENT DETAILS**  
KELLOGG AVE FROM DOWEL TO BRUNDIGE ROAD

**BAUGHMAN COMPANY, P.A.**  
ENGINEERING, SURVEYING, & PLANNING  
316-262-7271 • 315 ELLIS • WICHITA, KANSAS 67211

SHEET  
4  
OF  
46