

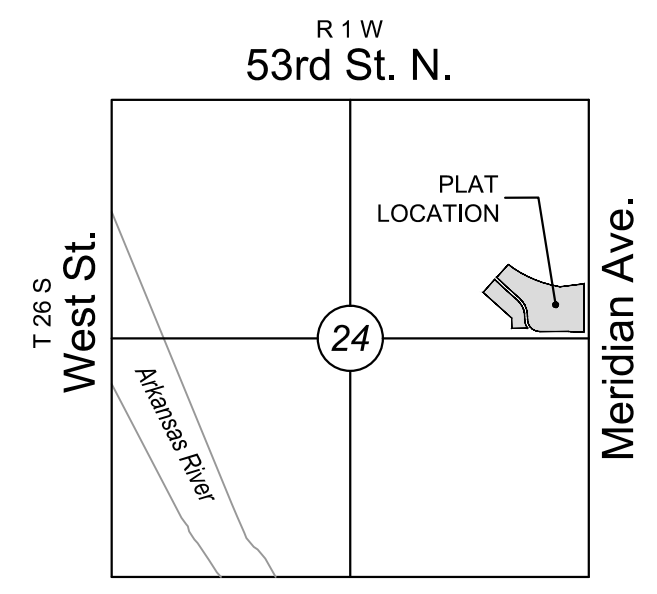
# FINAL PLAT

## THE MOORINGS PLAZA FOURTH ADDITION

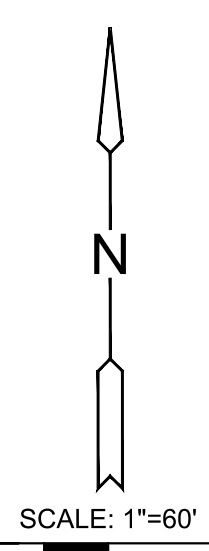
AN ADDITION TO WICHITA, SEDGWICK COUNTY, KANSAS

NE. cor., NE 1/4, Sec. 24,  
T26S, R1W, 6th P.M.  
Fnd. 3/4" Rebar w/o cap

NE. cor. SE 1/4, NE 1/4, Sec.  
24, T26S, R1W, 6th P.M.  
Not Fnd. Not Set



**VICINITY MAP**



Basis of Bearings: Kansas coordinate system of 1983 south zone bearing of S00°46'02"E on the east line of Southeast Quarter of the Northeast Quarter, Section 24, Township 26 South, Range 1 West of the Sixth Principal Meridian, Sedgwick County, Kansas.

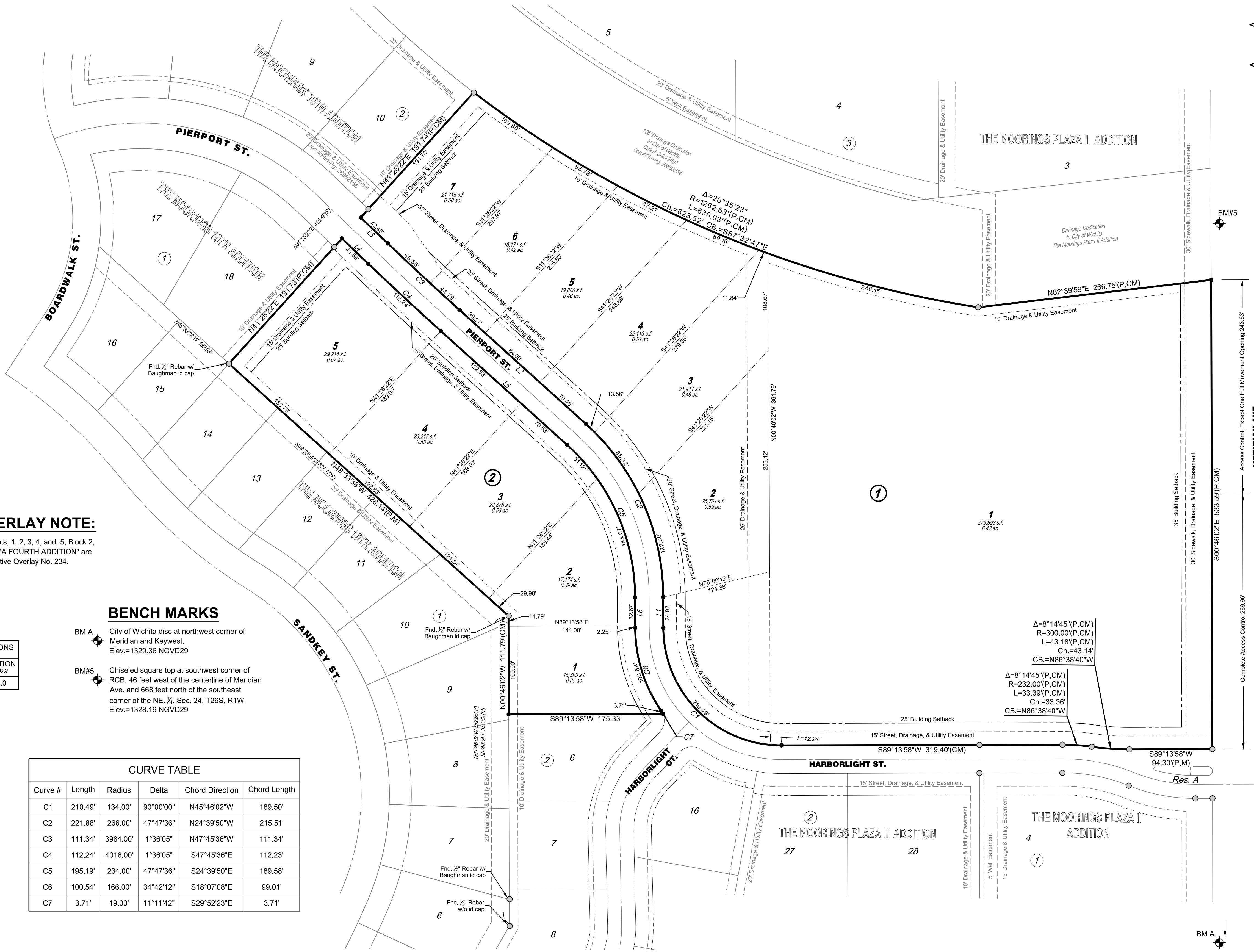
This plat is surveyed and platted on NAD83 using Kansas state plane south zone coordinates, modified to the surface, having a combined adjustment scale factor of 1.000120014401728

**LEGEND**

Date of Survey: 1/17/2023

- △ = Section Corner Monument Found
- = Found 3/4" rebar w/ MKEC CLS 39 id. cap or see annotation for type
- = Set 3/4" rebar w/ MKEC CLS 39 id. cap
- ⊕ = Benchmark
- (M) = Measured
- (CM) = Calculated per Measurements
- (P) = Platted
- 1 = Lot
- ① = Block

SE. cor., NE 1/4, Sec. 24,  
T26S, R1W, 6th P.M.  
Fnd. 3/4" Rebar w/ Illegible  
id cap



**PROTECTIVE OVERLAY NOTE:**

Lot 2, 3, 4, 5, 6 and 7, Block 1, and Lots 1, 2, 3, 4, and 5, Block 2, of this plat of "THE MOORINGS PLAZA FOURTH ADDITION" are subject to the conditions of the Protective Overlay No. 234.

**BENCH MARKS**

- BM A City of Wichita disc at northwest corner of Meridian and Keywest. Elev.=1329.36 NGVD29
- BM#5 Chiseled square top at southwest corner of RCB, 46 feet west of the centerline of Meridian Ave. and 668 feet north of the southeast corner of the NE 1/4, Sec. 24, T26S, R1W. Elev.=1328.19 NGVD29

MINIMUM PAD ELEVATIONS LOWEST OPENINGS		
LOTS Inclusive	BLOCK	ELEVATION NGVD29
1-7	1	1329.0

LINE TABLE		
Line #	Length	Direction
L1	34.92'	N00°46'02"W
L2	193.66'	N48°33'38"W
L3	42.48'	N46°57'33"W
L4	41.58'	S46°57'33"E
L5	193.66'	S48°33'38"E
L6	34.92'	S00°46'02"E

CURVE TABLE					
Curve #	Length	Radius	Delta	Chord Direction	Chord Length
C1	210.49'	134.00'	90°00'00"	N45°48'02"W	189.50'
C2	221.88'	266.00'	47°47'36"	N24°39'50"W	215.51'
C3	111.34'	3984.00'	1°36'05"	N47°45'36"W	111.34'
C4	112.24'	4016.00'	1°36'05"	S47°45'36"E	112.23'
C5	195.19'	234.00'	47°47'36"	S24°39'50"E	189.58'
C6	100.54'	166.00'	34°42'12"	S18°07'08"E	99.01'
C7	3.71'	19.00'	11°11'42"	S29°52'23"E	3.71'

