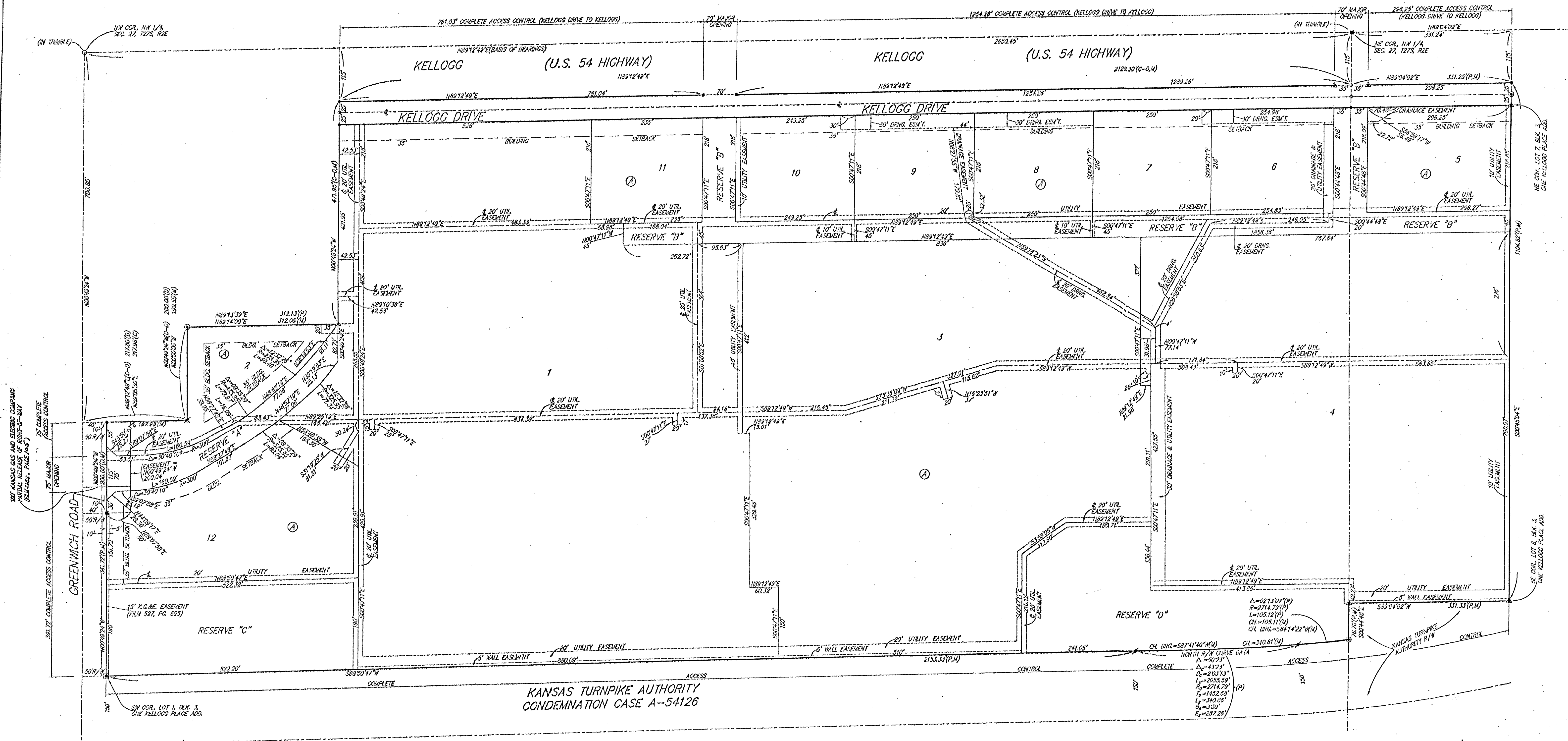


# ONE KELLOGG PLACE 2ND ADDITION

## WICHITA, SEDGWICK COUNTY, KANSAS



- = #4 REBAR W/ "BAUGHMAN" CAP (SET)
- = 3/4" IRON (FOUND)
- = #4 REBAR (FOUND)
- × = #8 REBAR (FOUND)
- × = #8 REBAR (FOUND)
- = #5 REBAR W/ "GODECKE" CAP (FOUND)
- × = #4 REBAR W/ "BAUGHMAN" CAP (FOUND)
- × = 1" IRON (FOUND)

- (M) = MEASURED
- (P) = PLATTED
- (D) = DESCRIBED
- (C) = CALCULATED
- (C-D) = CALCULATED PER DESCRIBED INFO.

NOTE: A DRAINAGE PLAN HAS BEEN DEVELOPED FOR THIS SUBDIVISION AND IS ON FILE WITH THE CITY OF WICHITA, KANSAS. DRAINAGE INTENT SHALL REMAIN AS DEPICTED OR AS MODIFIED WITH THE APPROVAL OF THE CITY ENGINEER OF THE CITY OF WICHITA, KANSAS. NO OBSTRUCTIONS WHICH IMPEDE THE FLOW OF THIS DRAINAGE PLAN SHALL BE ALLOWED.

MINIMUM BUILDING PAD ELEVATIONS FOR LOWEST OPENING TO THE STRUCTURES		
LOT	BLOCK	ELEVATION
1	A	173.0
3	A	172.0
4	A	172.0
12	A	168.0

BENCHMARK:  
CITY OF WICHITA BENCHMARK - SE CORNER OF INTERSECTION OF GREENWICH AND KELLOGG, NW CORNER OF LIGHT POLE BASE, 48.50' N.W. OF E. OF S.S. MAINHOLE, 48.70' S. OF E. OF TRAFFIC SIGNAL MAINHOLE IN KELLOGG MEDIAN, 70.50' E. OF BACK OF E. CURB ON E. SIDE OF MEDIAN IN GREENWICH ROAD.