

**Benchmarks**

- #3 -Greenwich Road & Kellogg  
City of Wichita Bench Mark Disc, NW corner of traffic signal light pole base. 48.60' NNW of Ctr sanitary sewer manhole. 48.70' S of Ctr of traffic signal manhole in Kellogg median. 70.50' E of back of E curb return on E side of median in Greenwich Rd.  
Elev. = 164.78 City Datum (1352.18 M.S.L.)
- #2 -RR Spike in North face of PP, at S.E. Corner of Greenwich Road and Orme Steet., Sta. 144+17.26, 48.61 Rt.  
Elev. = 162.97 City Datum (1350.37 M.S.L.)
- #1 -RR Spike in West face of HLP, East side of Greenwich Road at Gilbert Street. Sta. 122+74.63, 48.63' Rt.  
Elev. = 161.58 City Datum (1348.98 M.S.L.)

**PAVEMENT IMPROVEMENTS**  
PAVEMENT WIDENING ON GREENWICH ROAD  
FROM N.L. OF GILBERT TO APPROX. 800 FT. NORTH OF ORME;  
TRAFFIC SIGNALIZATION, MAJOR ENTRANCE; & LEFT TURN LANE  
TO SERVE

**ONE KELLOGG PLACE 2ND ADDITION**

Lots 1 through 12, Block A

CITY OF WICHITA, KANSAS

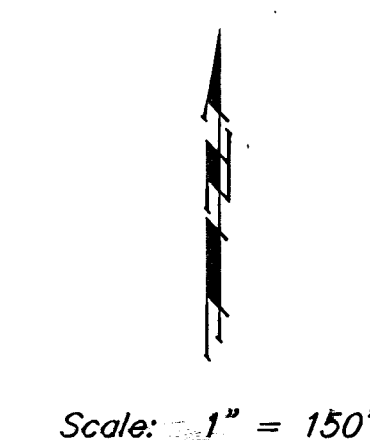
Michael E. Lindebak, P.E. City Engineer

Project Number

O.C.A. Number

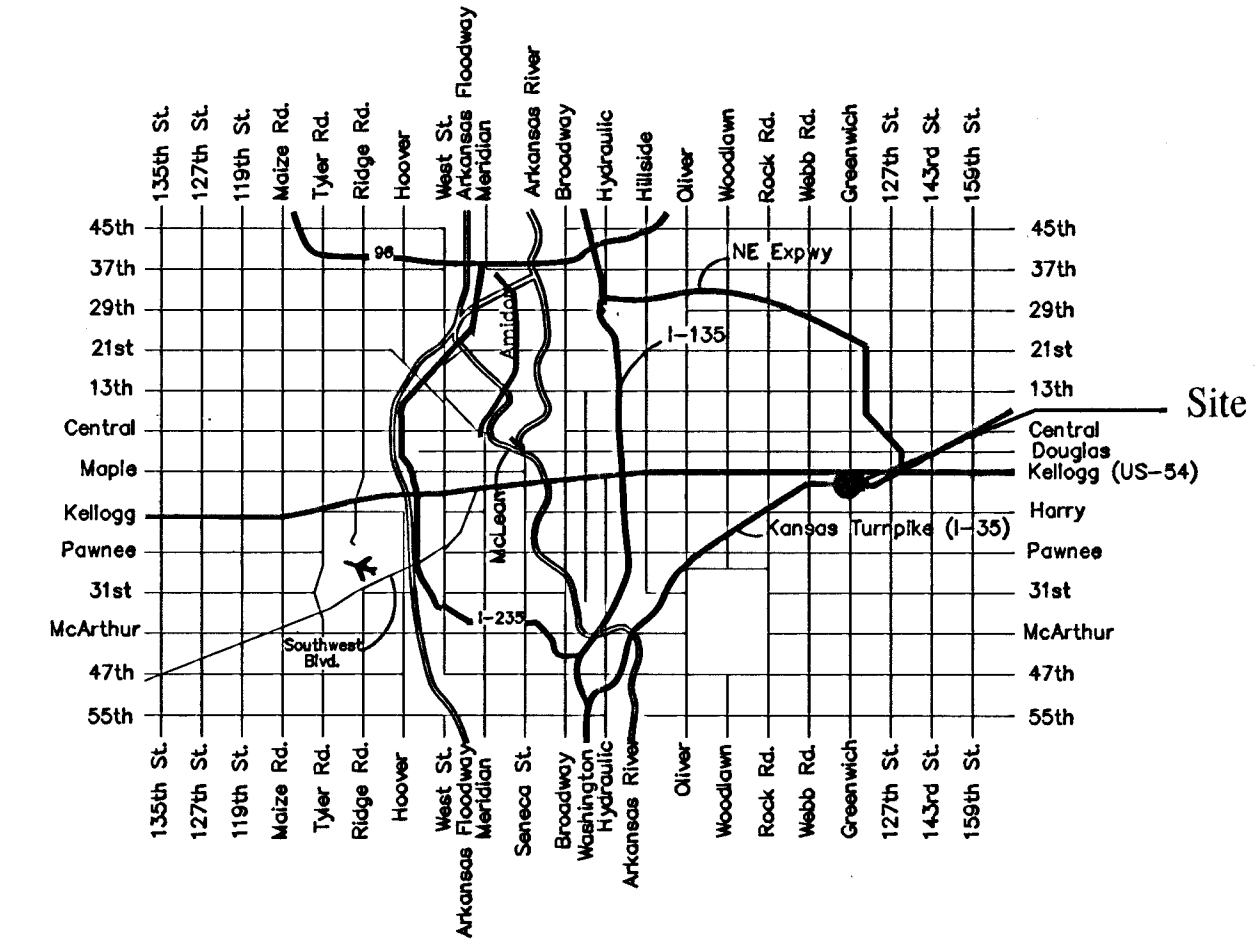
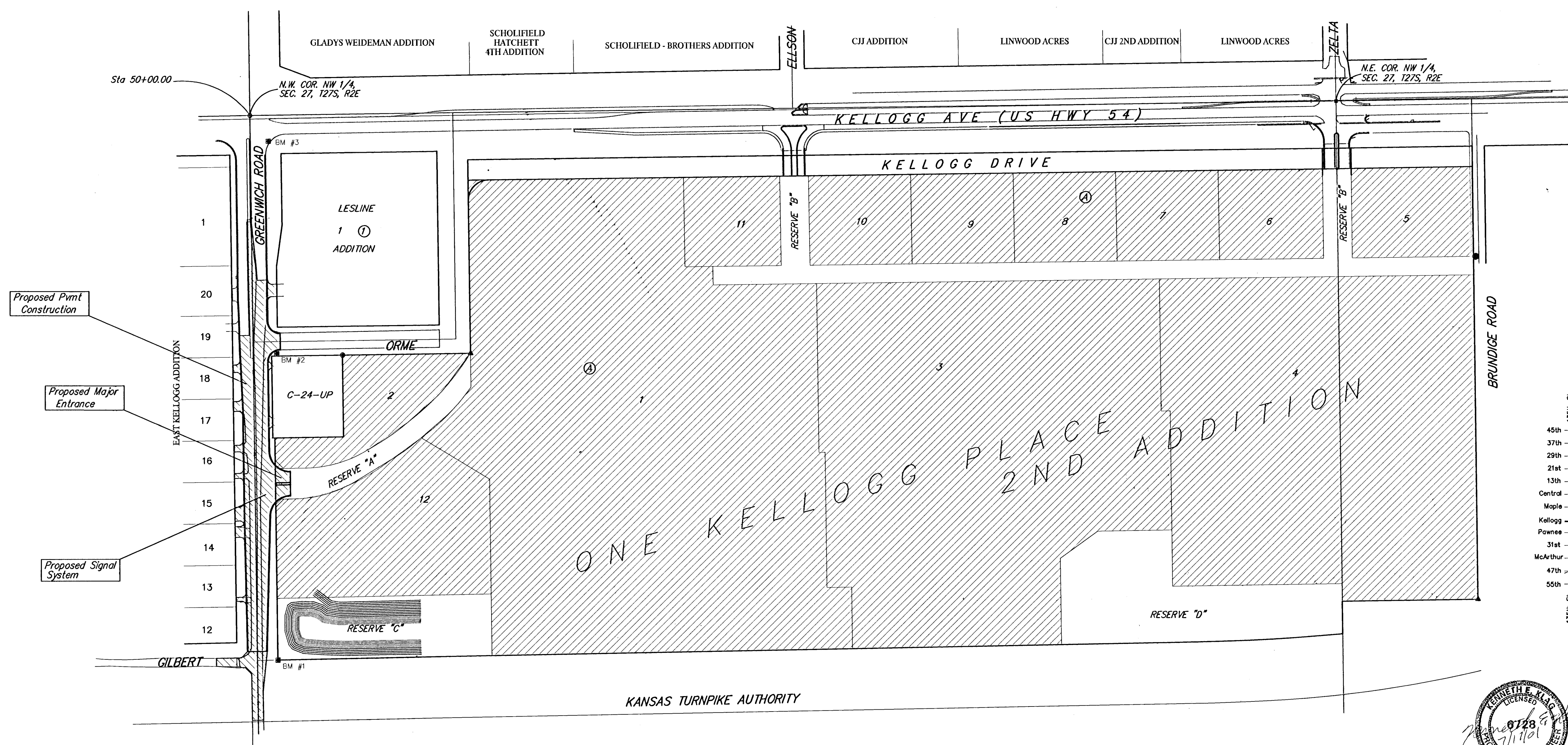
**472-83370**

**765682**



**Sheet Index**

Title Page	1
General Notes	2
Typical Pavement Sections	3-4
Paving Details	5-6
Paving Plans	7-9
Storm Sewer Plans	10-11
Storm Sewer Details	12-15
Water Details	16
Traffic Signal Plans	17
Traffic Signal Wiring Plans	18
Traffic Signal Details	19-23
Marking/Signing Plans	24
Signing Details	25
Const. Traffic Control Plans	26-31
Erosion Control Details	32-36
Cross Sections	37-42
Plat	43



**Vicinity Map**



Improvement District

Proposed Improvements

F:\Kellog\_gr\Greenwich\Parcov\_gr1

**BAUGHMAN COMPANY, P.A.**  
ENGINEERING, SURVEYING, & PLANNING  
316-262-7271 • 315 ELLIS • WICHITA, KANSAS 67211

SHEET  
1  
OF  
43

F:\Eng\WEL02\_08\greenwich\parcov\_gr1.dwg Tue Jul 17 10:26:41 2001