

# AS-BUILT PLANS

## SANITARY SEWER IMPROVEMENTS

to serve

# BROOKFIELD SOUTH ADDITION & BROOKFIELD SOUTH 2ND ADDITION

## PHASE I

CITY OF WICHITA, KANSAS

Paul Gunzelman, P.E., Interim City Engineer

Project Number 468-2022-012071 47268423 E3075

K. Kerns - City of Wichita, Field Project Engineer  
 As-built  
 Stubs & Risers  
 Release Date: 4/2/2024  
 Completion Date:  
 pdf: apr 6/7/2024

Baughman Company Job Number: 23-08-E567

### GENERAL NOTES:

- Contractor will be required to provide notice to utility companies a minimum of seventy-two (72) hours prior to any excavation, as follows:  
 Kansas One-Call 687-2470  
 The Contractor must notify the following in case of an emergency:  
 Cox Communications 262-4270  
 Kansas Gas Service 1-888-482-4950  
 Westar Energy 383-8650  
 Aquila Energy 1-800-303-0357  
 AT&T 268-2245  
 City of Wichita Water Dept. 268-4563  
 City of Wichita Sewer Maint. 268-4024  
 City of Wichita Storm Sewer Maint. 268-4090  
 City of Wichita Traffic Maint. 268-4034  
 Conoco Phillips Pipeline Co. 1-877-267-2290  
 Southern Star Pipeline Co. 529-6600  
 Kinder-Morgan Pipeline Co. 1-888-844-5658
- All existing and proposed erosion control measures including silt fencing, erosion control mat, straw bales, inlet barriers, and const. entrance shall be maintained throughout construction by the contractor and until project is accepted by the City of Wichita. The on-site engineer shall complete weekly reports on the status of erosion control measures. The contractor shall be required to comply with maintenance and/or replacement of erosion control measures as determined by the on-site engineer until project is accepted by City of Wichita. Maintenance and/or replacement of erosion control measures to be paid by L.S. bid item "Maintain Existing BMP's."
- All excess excavation shall remain on-site and shall be stockpiled or spread at a location determined by the engineer.
- The Contractor shall be responsible for maintaining continuous flow of sewage through construction. Contractor's proposed method for maintaining sewage flow shall be approved by the Engineer. Cost of maintaining flow of sewage through construction will not be paid for directly and this cost shall be considered as subsidiary to the other pay items of work.
- All areas disturbed by construction are to be seeded as follows:  
 Seed -- Rye grass; 5 lbs./1000 Sq. Ft.  
 All costs associated with seeding including mobilization, preparation of ground, seeding, fertilizing, mulching, etc. shall be included in the L.S. bid item "Seeding".
- Trees and shrubs in the work area which are in direct conflict with proposed new construction shall be removed by the Contractor ONLY with the Developer or Baughman Company approval. Trees and shrubs which are not in direct conflict with proposed new construction shall be saved and protected from damage. If trimming is necessary, a chainsaw shall be used. Breaking limbs with equipment will not be allowed. An on-site pre-construction meeting will occur prior to any construction to discuss tree removal, tree protection, and tree trimming.
- The Developer for this project is Jeff Mullen  
 8100 E. 22nd St. N., Bldg. 1000, Wichita, KS 67272  
 PH(316) 684-7300 email: jeff@ritchidevelopment.com

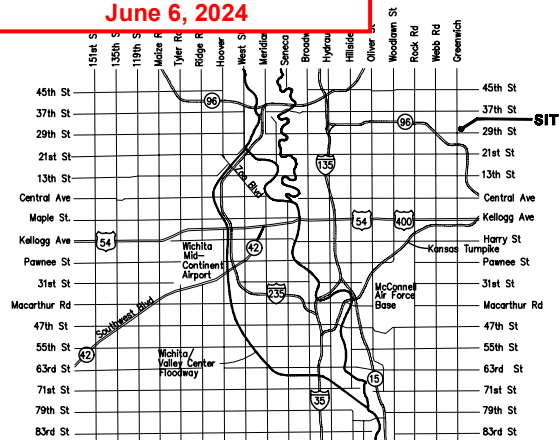
Pipe, SS 8" = 7,217 L.F.  
 Pipe, SS 10" = 1,579 L.F.  
 Pipe Stub, 8" = 6 EACH.  
 Riser Assembly 4", MH Stub = 12 EACH.  
 Riser Assembly 4", Vertical = 26 EACH.  
 MH, Standard SS (4") = 32 EACH.  
 MH, Standard SS (5") = 6 EACH.  
 MH, Shallow SS (4") = 1 EACH.  
 MH, Outside Drop SS (4") = 1 EACH.  
 MH, Outside Drop SS (5") = 1 EACH.

### SHEET INDEX

Title Sheet	1
Line 1	2-4
Line 1 & Line 1E	5
Line 1A & Line 1B	6
Line 1C	7-8
Line 1D	9-10
Line 2 & Line 2A	11-12
Line 3 & Line 3A	13-14
Erosion Control Plan	15
Erosion Control BMP Details	16-21
Precast Manhole Detail	21
Frame & Cover Detail	22
Vertical Riser Detail	23
Coordinate Sheet	24
Brookfield South Adn Plat	25-26
Brookfield South 2nd Adn Plat	27-28

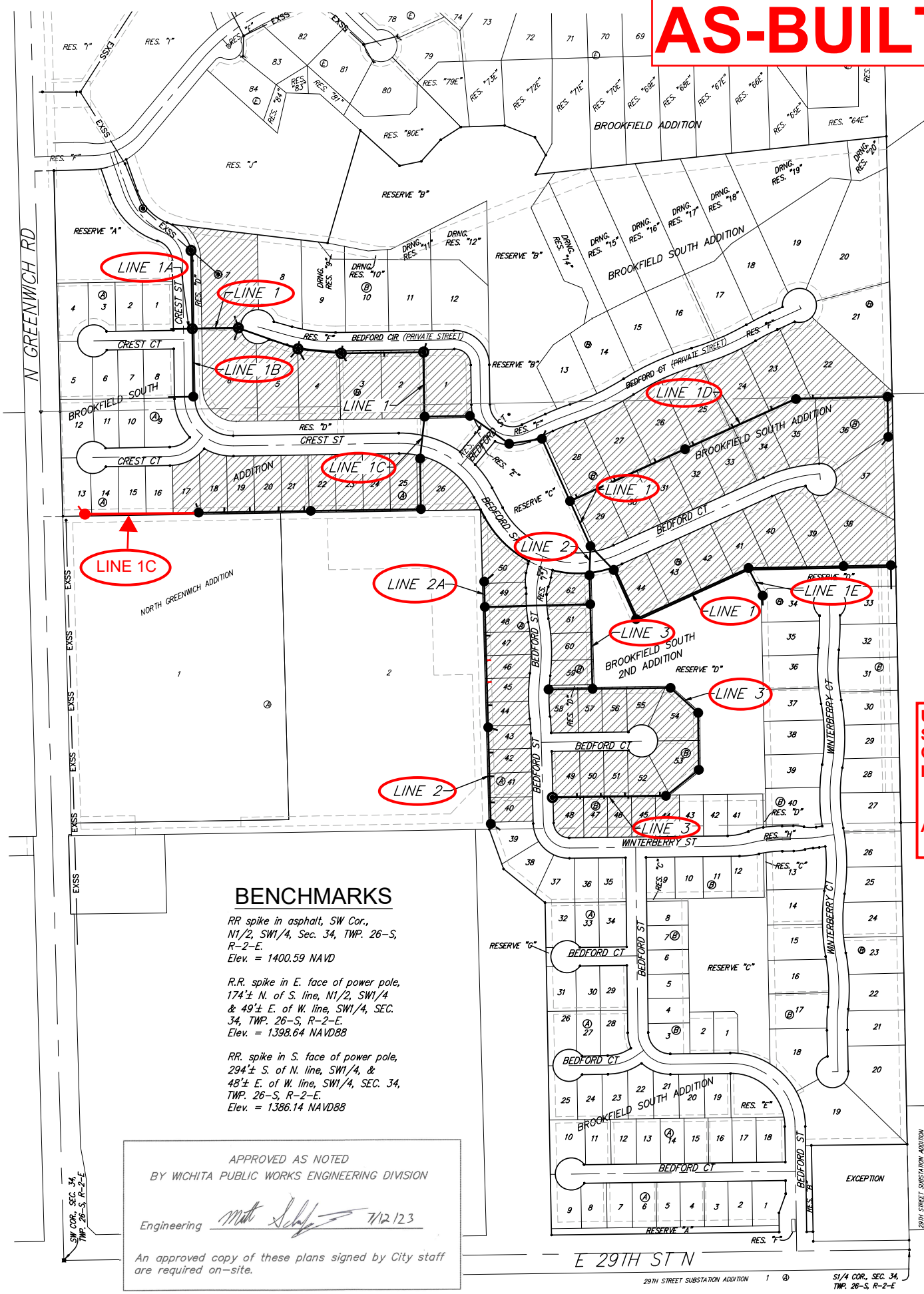
Utility Contractor = Mies Construction  
 Superintendent = Albert Williams  
 Construction Staking = City of Wichita  
 Inspector = Fred Smith -  
 Baughman Company

As-Built Plans = FES & Larry Powell  
 June 6, 2024



VICINITY MAP

BENEFIT DISTRICT



### BENCHMARKS

RR spike in asphalt, SW Cor.,  
 N1/2, SW1/4, Sec. 34, TWP. 26-S,  
 R-2-E.  
 Elev. = 1400.59 NAVD

R.R. spike in E. face of power pole,  
 174± N. of S. line, N1/2, SW1/4  
 & 49± E. of W. line, SW1/4, SEC.  
 34, TWP. 26-S, R-2-E.  
 Elev. = 1398.64 NAVD88

RR. spike in S. face of power pole,  
 294± S. of N. line, SW1/4, &  
 48± E. of W. line, SW1/4, SEC. 34,  
 TWP. 26-S, R-2-E.  
 Elev. = 1386.14 NAVD88

APPROVED AS NOTED  
 BY WICHITA PUBLIC WORKS ENGINEERING DIVISION

Engineering *[Signature]* 7/12/23

An approved copy of these plans signed by City staff  
 are required on-site.



Jun. 19, 2023

**BAUGHMAN COMPANY**  
 315 Ellis St. Wichita, KS 67211 316-262-7271  
 BaughmanCo.com



Construction Engineering Division  
 1801 S. McLean Blvd., Suite B  
 Wichita KS, 67213  
 (316) 268-4027

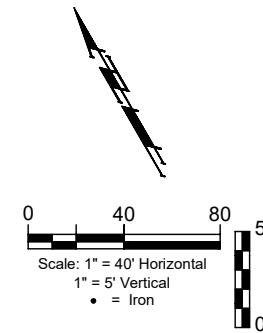
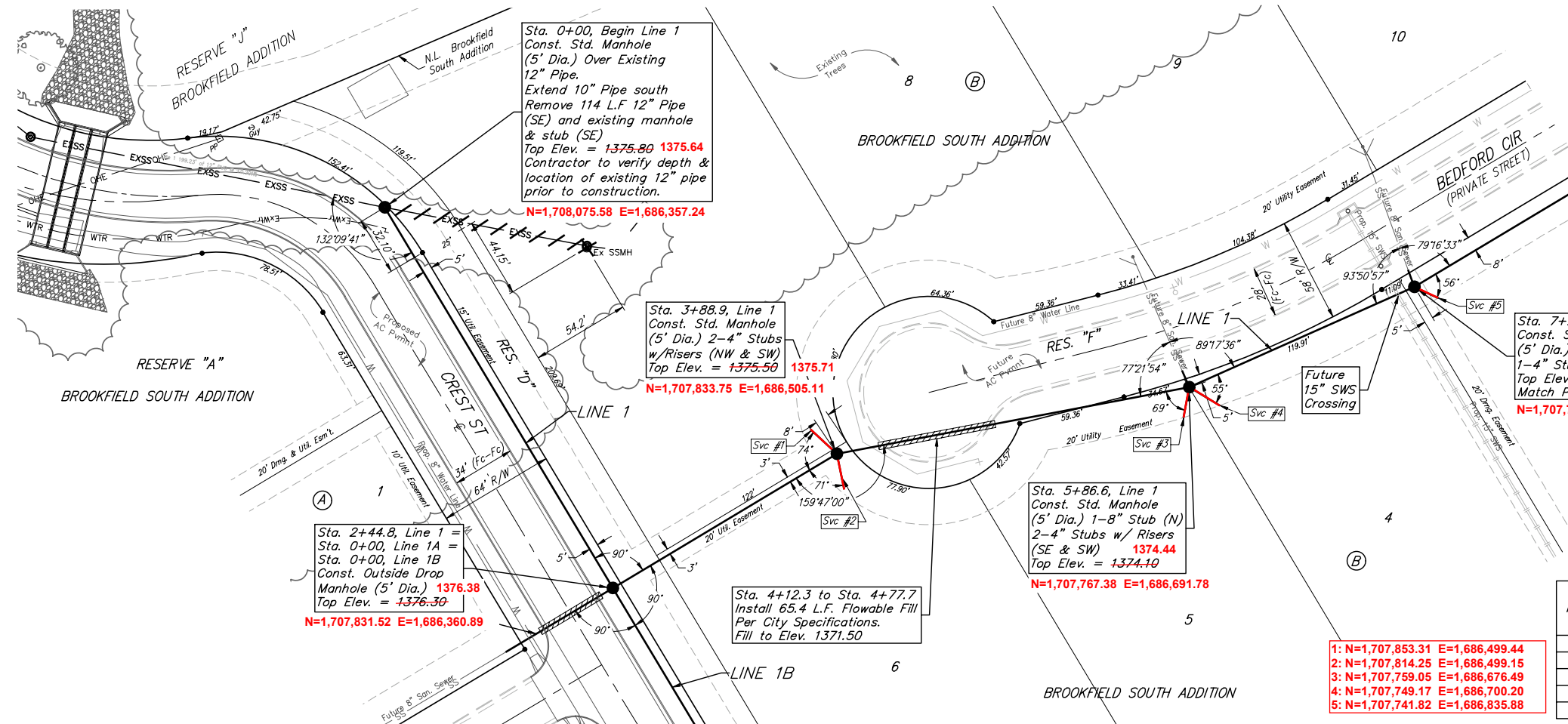
## Sanitary Sewer Riser Table

**Project Name:** SS\_ENT WTR\_WTR PH1\_SWS\_SWD\_ENT PAV\_PAV PH1 Brookfield So & 2nd Add  
**Project Location:** 37th & Greenwich 472-2022-085777  
**Project No:** 468-2022-012071\_448-2022-029538\_448-2022-012087  
**MUNIS No:** 458-2022-085502\_458-2022-085503\_472-2022-085783  
**Contractor:** Mies Construction  
**Inspector:** Fred Smith (Baughman Co)

Riser No.	Line No.	Station	Distance from Main to Riser (Lt./Rt.)		Vertical Offset	Distance from		Comment
						Upstream MH	Downstream MH	
1	1	3+88.9	19.6	Lt				STUB @ MH
2	1	3+88.9	19.4	Rt				STUB @ MH
3	1	5+86.9	13.0	Rt				STUB @ MH
4	1	5+86.6	17.0	Rt				STUB @ MH
5	1	7+22.6	11.2	Rt				STUB @ MH
6	1	8+57.6	13.1	Rt		135.6	123.7	
7	1	9+80.6	9.6	Lt				STUB @ MH
8	1C	6+55.1	14.1	Rt		330.2	20.7	
9	1C	7+35.1	14.1	Rt		248.0	102.9	
10	1C	8+25.1	13.3	Rt		161.7	189.2	
11	1C	9+05.1	14.7	Rt		78.3	272.6	
12	1C	9+85.1	15.6	Rt				STUB @ MH
12A	1C	13+25.1	19.0	Rt				STUB @ MH
13	1D	0+25.0	12.6	Lt		369.6	24.8	
14	1D	1+55.	12.9	Lt		238.7	155.6	
15	1D	2+95.	13.4	Lt		99.2	295.1	
16	1D	4+25.	13.7	Lt		352.7	30.2	
17	1D	5+60.	12.7	Lt		228.3	154.6	
18	1D	6+95.	13.7	Lt		82.4	300.5	
19	1D	8+29.2	14.2	Lt		220.8	60.0	
20	1D	11+87.5	8.2	Rt				STUB @ MH
21	2A	0+77.0	19.0	Rt				STUB @ MH
22	2	6+01.4	14.5	Lt		283.7	90.0	
22A	2	6+73.4	16.0	Lt		212.2	161.6	ADDED
22B	2	7+45.4	14.9	Lt		139.1	234.6	ADDED
23	2	8+19.4	15.6	Lt		64.9	308.8	
24	2	8+31.1	13.8	Lt				STUB @ MH
25	2	9+57.1	15.2	Lt		234.7	71.5	
26	2	10+31.1	15.1	Lt		160.6	145.6	
27	2	11+03.1	13.8	Lt		88.9	217.2	
28	2	11+95.9	14.8	Lt				STUB @ MH
29	3	9+53.9	12.9	Rt		337.4	18.4	
30	3	10+53.4	6.7	Lt		237.7	118.1	
31	3	10+63.4	13.0	Rt		228.5	127.3	
32	3	11+28.4	7.6	Lt		161.6	194.2	
33	3	11+38.4	13.1	Rt		152.0	203.8	
34	3	12+03.4	7.0	Lt		87.4	268.4	



**BENCHMARKS:**  
 RR spike in asphalt, SW Cor., N1/2, SW1/4, Sec. 34, TWP. 26-S, R-2-E. Elev. = 1400.59 NAVD  
 R.R. spike in E. face of power pole, 174± N. of S. line, N1/2, SW1/4 & 49± E. of W. line, SW1/4, SEC. 34, TWP. 26-S, R-2-E. Elev. = 1398.64 NAVD88  
 R.R. spike in S. face of power pole, 294± S. of N. line, SW1/4, & 48± E. of W. line, SW1/4, SEC. 34, TWP. 26-S, R-2-E. Elev. = 1386.14 NAVD88

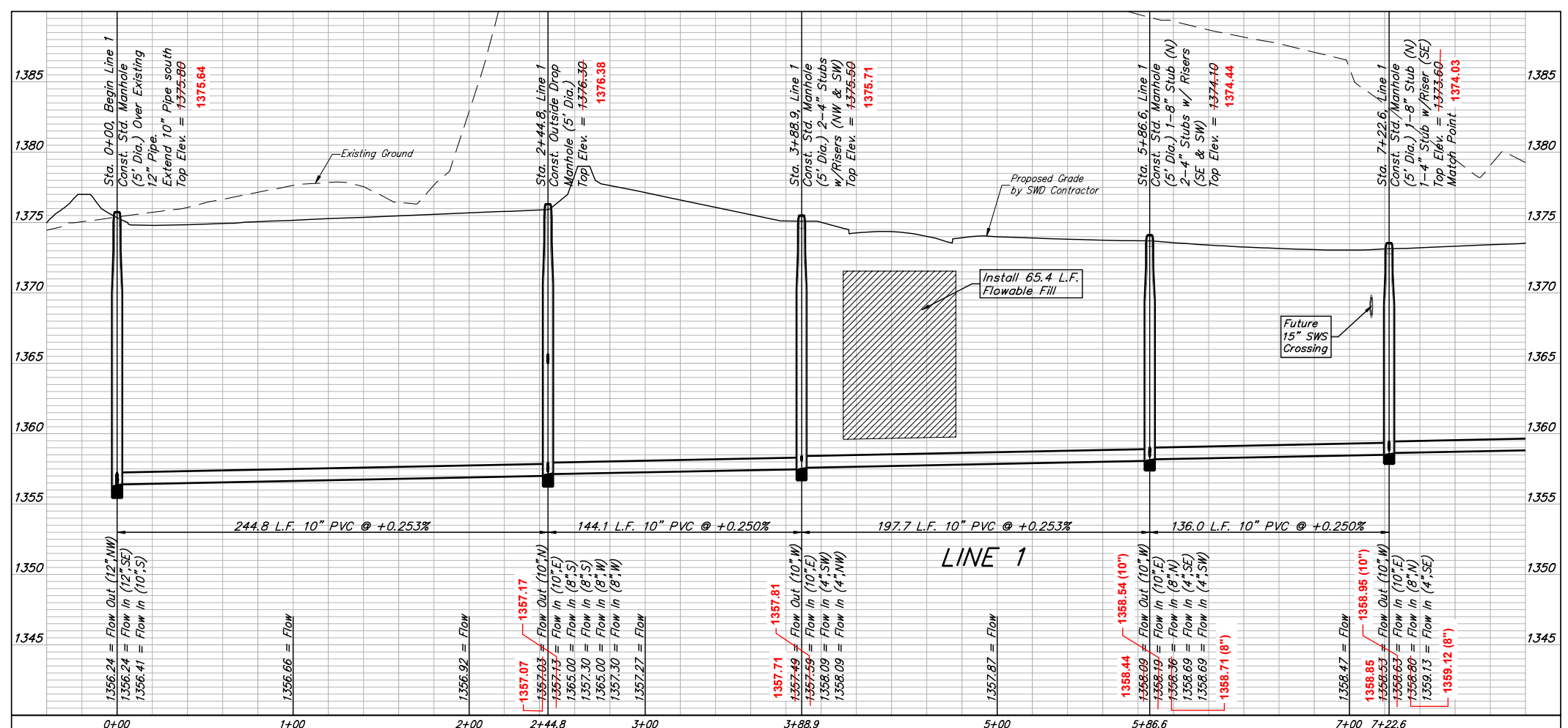


Riser Number	Distance from Main to Riser (Lt./Rt.)	Distance from	
		Upstream MH	Downstream MH
1	20' Lt.	@ MH	@ MH
2	19' Rt.	@ MH	@ MH
3	13' Rt.	@ MH	@ MH
4	17' Rt.	@ MH	@ MH
5	11' Rt.	@ MH	@ MH

The Contractor shall be required to backfill trench with sand from Sta. 0+00 to Sta. 2+44.8 and from Sta. 4+77.7 to Sta. 7+22.6, Line 1. To be bid as "L.F. Fill, Sand, Flushed & Vibrated"

NUMBER	TYPE	LOCATION				FOR INFORMATION ONLY	
		LOT NO.	BLOCK NO.	LINE NO.	STATION/DIRECTION	APPROXIMATE LENGTH 4" PIPE	
1	4" Stub	7	B	1	3+88.9/Lt.	13.8'	20'
2	4" Stub	6	B	1	3+88.9/Rt.	13.8'	20'
3	4" Stub	5	B	1	5+86.6/Rt.	11.6'	15'
4	4" Stub	4	B	1	5+86.6/Rt.	11.5'	20'
5	4" Stub	3	B	1	7+22.6/Rt.	10.8'	15'

- 1: N=1,707,853.31 E=1,686,499.44
- 2: N=1,707,814.25 E=1,686,499.15
- 3: N=1,707,759.05 E=1,686,676.49
- 4: N=1,707,749.17 E=1,686,700.20
- 5: N=1,707,741.82 E=1,686,835.88



**BAUGHMAN COMPANY**  
 315 Ellis St.  
 Wichita, KS 67211  
 316-262-7271  
 BaughmanCo.com

Brookfield South Addition & Brookfield South 2nd Addition Phase I

**LINE 1**

SANITARY SEWER IMPROVEMENTS

PROJECT NUMBER:  
468-2022-012071

DESIGN: AEG DRAWN: JAK

DATE: JUN. 19, 2023

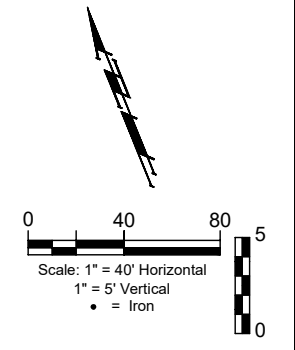
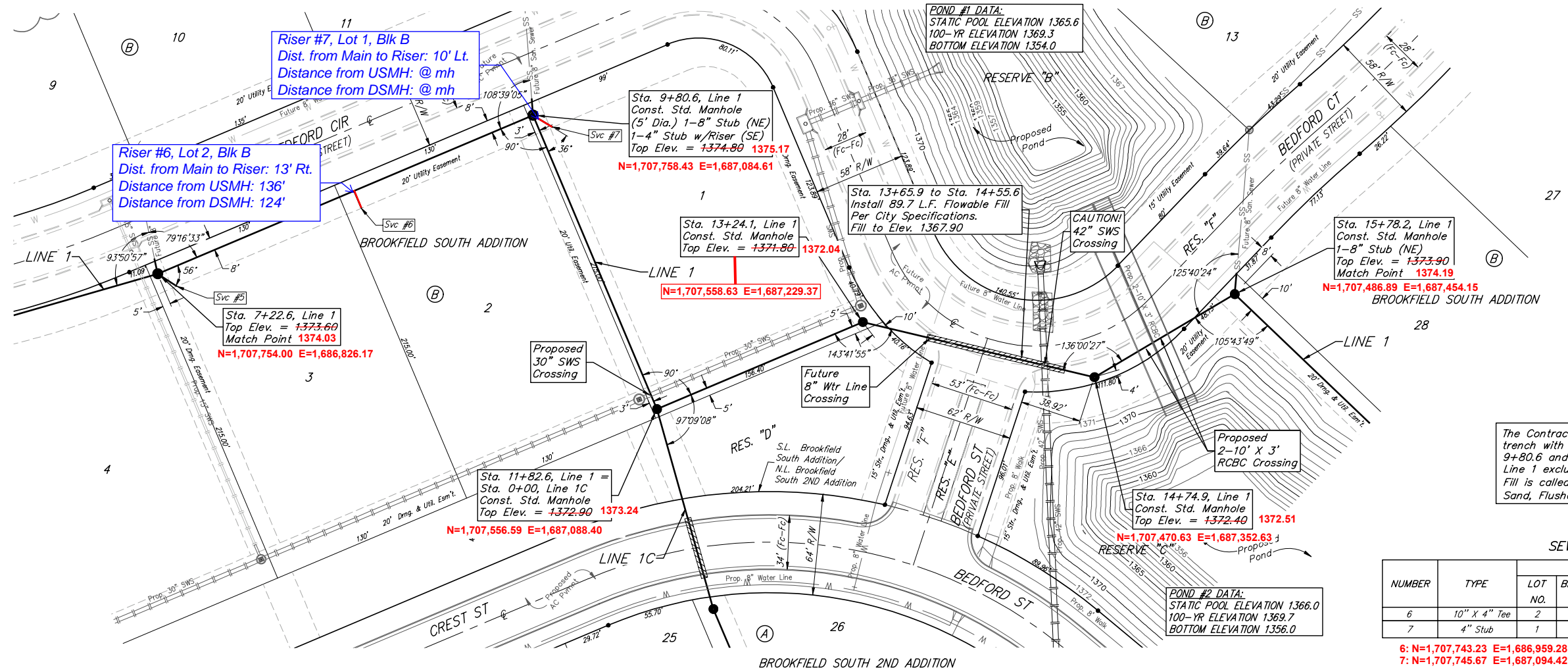
SHEET 2 OF 28

File: C:\Projects\Brookfield South 2nd Addition\Engineering\Phase 1\SS\_22-03-E143.dwg

**BENCHMARKS:**  
 RR spike in asphalt, SW Cor.,  
 N1/2, SW1/4, Sec. 34, TWP. 26-S,  
 R-2-E.  
 Elev. = 1400.59 NAVD

RR spike in E. face of power pole,  
 174'± N. of S. line, N1/2, SW1/4  
 & 49'± E. of W. line, SW1/4, SEC.  
 34, TWP. 26-S, R-2-E.  
 Elev. = 1398.64 NAVD88

RR spike in S. face of power pole,  
 294'± S. of N. line, SW1/4, &  
 48'± E. of W. line, SW1/4, SEC. 34,  
 TWP. 26-S, R-2-E.  
 Elev. = 1386.14 NAVD88

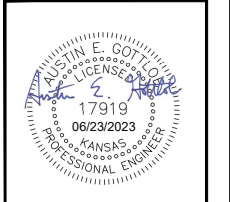
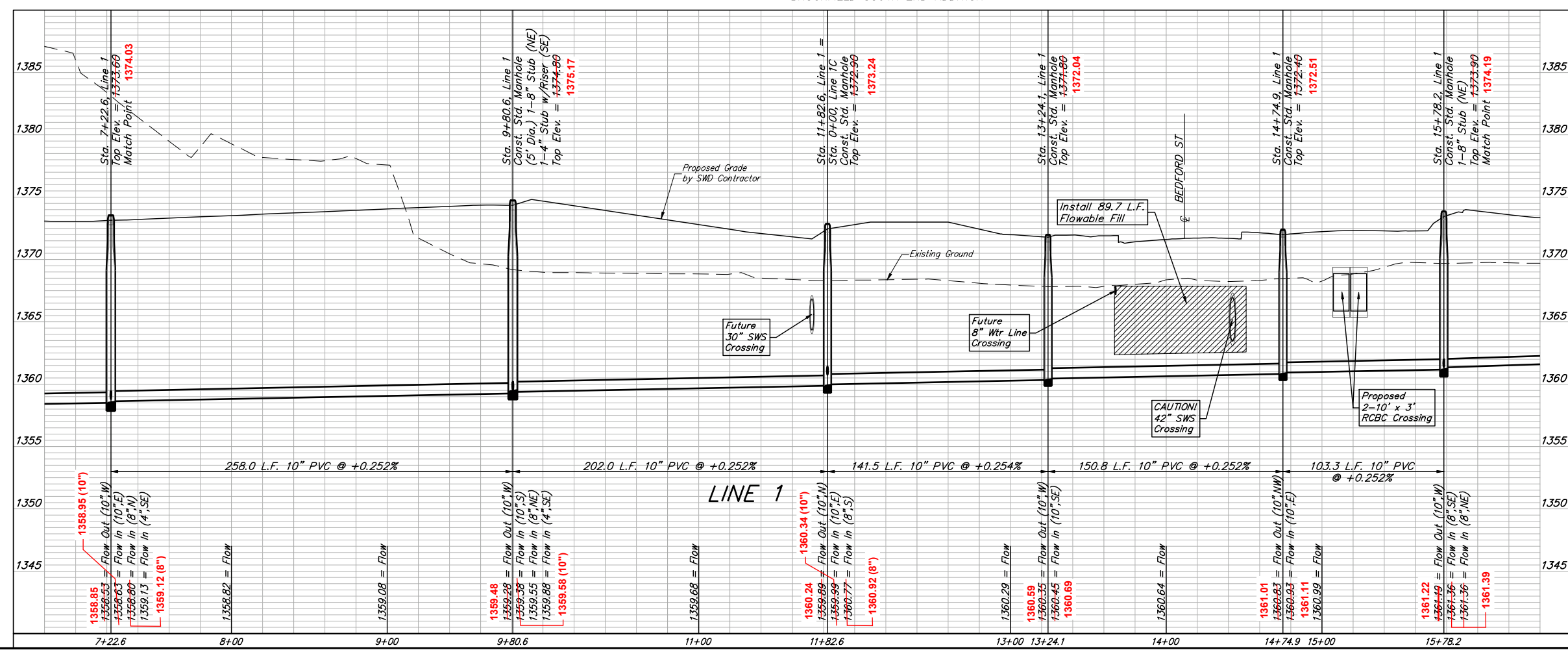


The Contractor shall be required to backfill trench with sand from Sta. 7+22.6 to Sta. 9+80.6 and Sta. 13+24.1 to Sta. 15+78.2, Line 1 excluding locations where Flowable Fill is called out. To be bid as "L.F. Fill, Sand, Flushed & Vibrated"

SEWER SERVICE TABLE

NUMBER	TYPE	LOCATION				FOR INFORMATION ONLY	
		LOT NO.	BLOCK NO.	LINE NO.	STATION/DIRECTION	APPROXIMATE LENGTH 4" PIPE	
6	10" X 4" Tee	2	B	1	8+57.6/Rt.	11.1'	18"
7	4" Stub	1	B	1	9+80.6/Lt.	11.2'	18"

6: N=1,707,743.23 E=1,686,959.28  
 7: N=1,707,745.67 E=1,687,094.42



**BAUGHMAN COMPANY**  
 315 Ellis St.  
 Wichita, KS 67211  
 316-262-7271  
 BaughmanCo.com

Brookfield South Addition &  
 Brookfield South 2nd Addition  
 Phase I

**LINE 1**

SANITARY SEWER IMPROVEMENTS

PROJECT NUMBER:  
 468-2022-012071

DESIGN: AEG DRAWN: JAK

DATE: Jun. 19, 2023

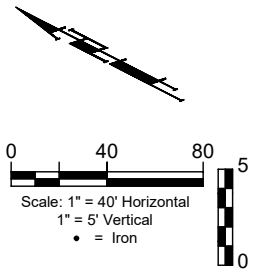
SHEET **3** OF **28**

File: E:\Projects\Brookfield South 2nd Addition\Engineering\Phase 1\SS\_22-03-E-143.dwg

**BENCHMARKS:**  
 RR spike in asphalt, SW Cor.,  
 N1/2, SW1/4, Sec. 34, TWP. 26-S,  
 R-2-E.  
 Elev. = 1400.59 NAVD

RR spike in E. face of power pole,  
 174± N. of S. line, N1/2, SW1/4  
 & 49± E. of W. line, SW1/4, SEC.  
 34, TWP. 26-S, R-2-E.  
 Elev. = 1398.64 NAVD88

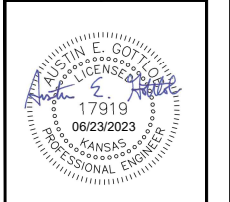
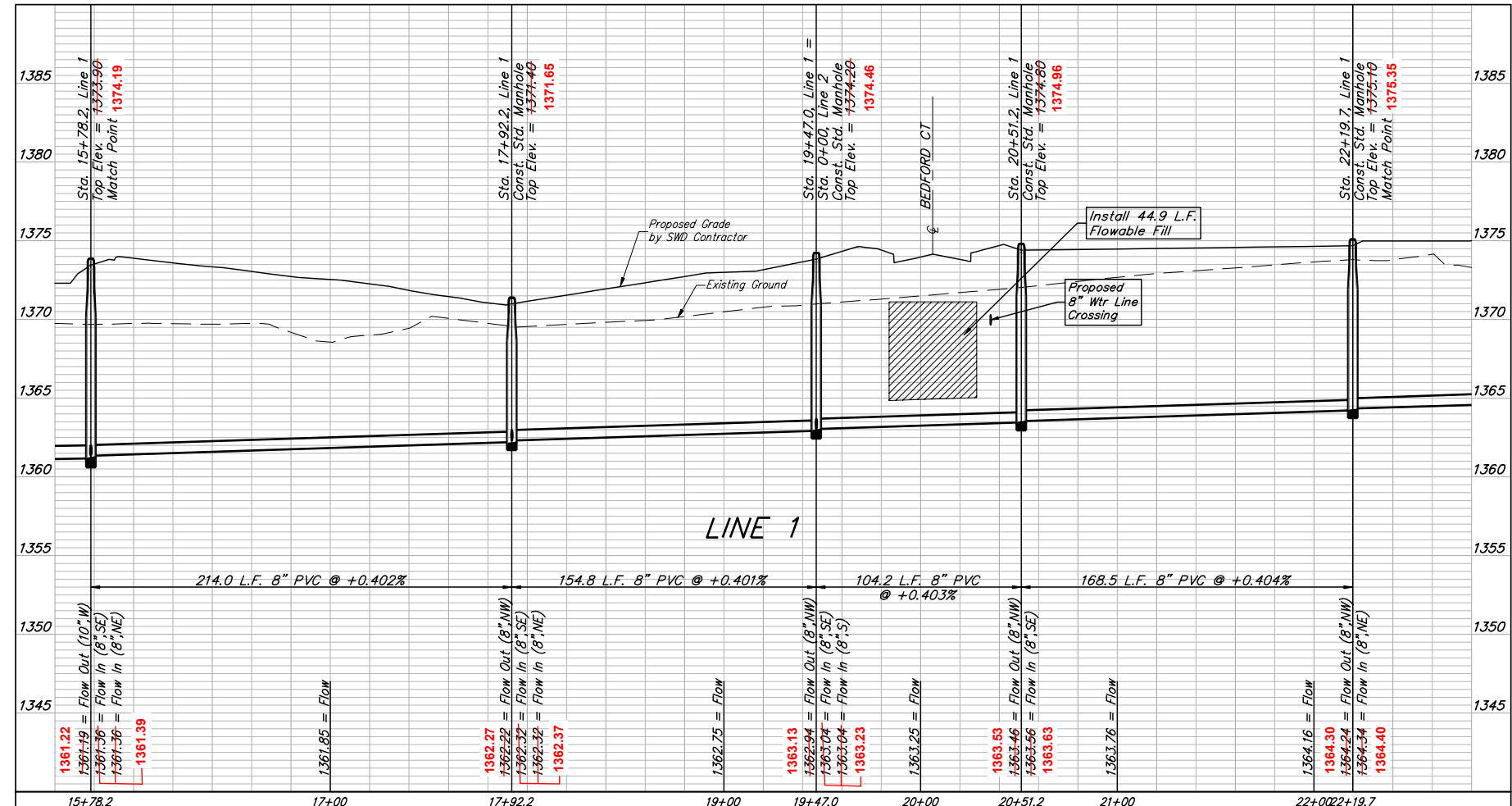
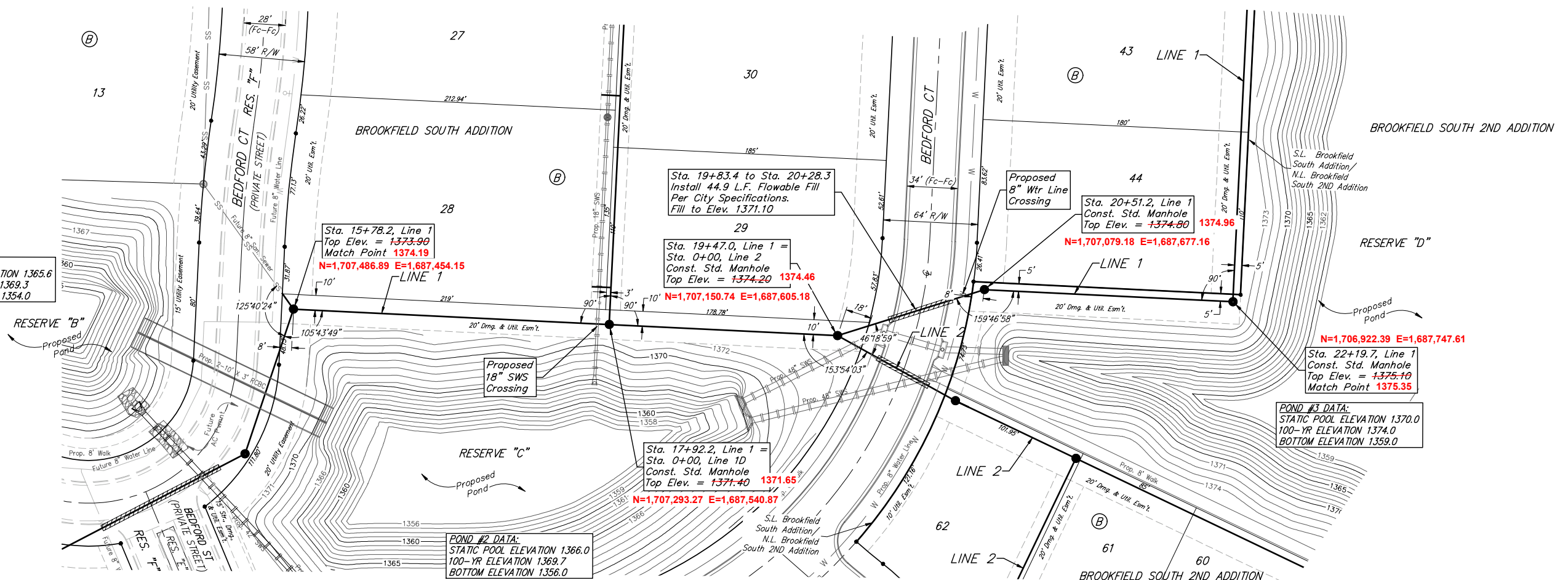
RR spike in S. face of power pole,  
 294± S. of N. line, SW1/4, &  
 48± E. of W. line, SW1/4, SEC. 34,  
 TWP. 26-S, R-2-E.  
 Elev. = 1386.14 NAVD88



**POND #1 DATA:**  
 STATIC POOL ELEVATION 1365.6  
 100-YR ELEVATION 1369.3  
 BOTTOM ELEVATION 1354.0

**POND #3 DATA:**  
 STATIC POOL ELEVATION 1370.0  
 100-YR ELEVATION 1374.0  
 BOTTOM ELEVATION 1359.0

**POND #2 DATA:**  
 STATIC POOL ELEVATION 1366.0  
 100-YR ELEVATION 1369.7  
 BOTTOM ELEVATION 1356.0



**BAUGHMAN COMPANY**  
 315 Ellis St.  
 Wichita, KS 67211  
 316-262-7271  
 BaughmanCo.com

Brookfield South Addition &  
 Brookfield South 2nd Addition  
 Phase I

**LINE 1**

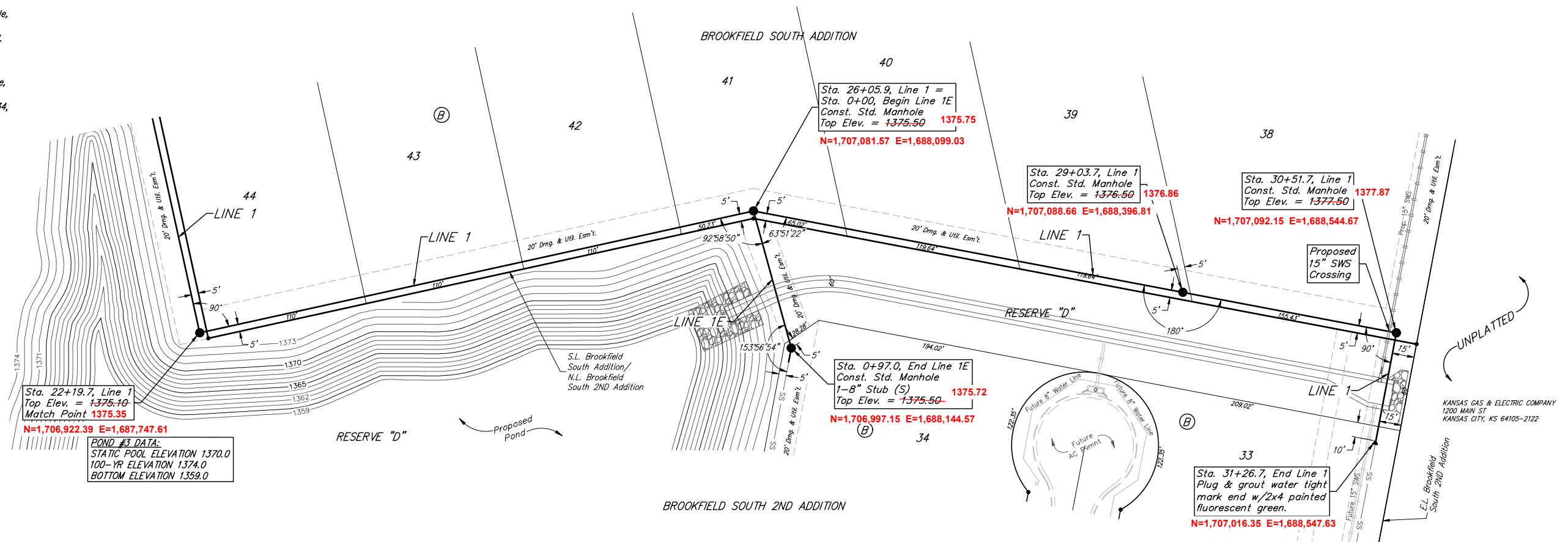
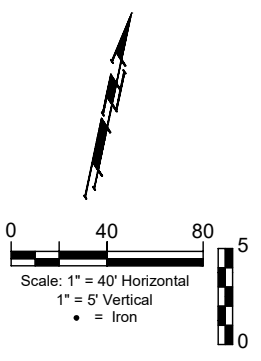
SANITARY SEWER  
 IMPROVEMENTS  
 PROJECT NUMBER:  
 468-2022-012071  
 DESIGN: AEG DRAWN: JAK  
 DATE: Jun. 19, 2023  
 SHEET 4 OF 28

File: E:\Projects\Brookfield South 2nd Addition\Engineering\Phase 1\SS\_22-03-E143.dwg

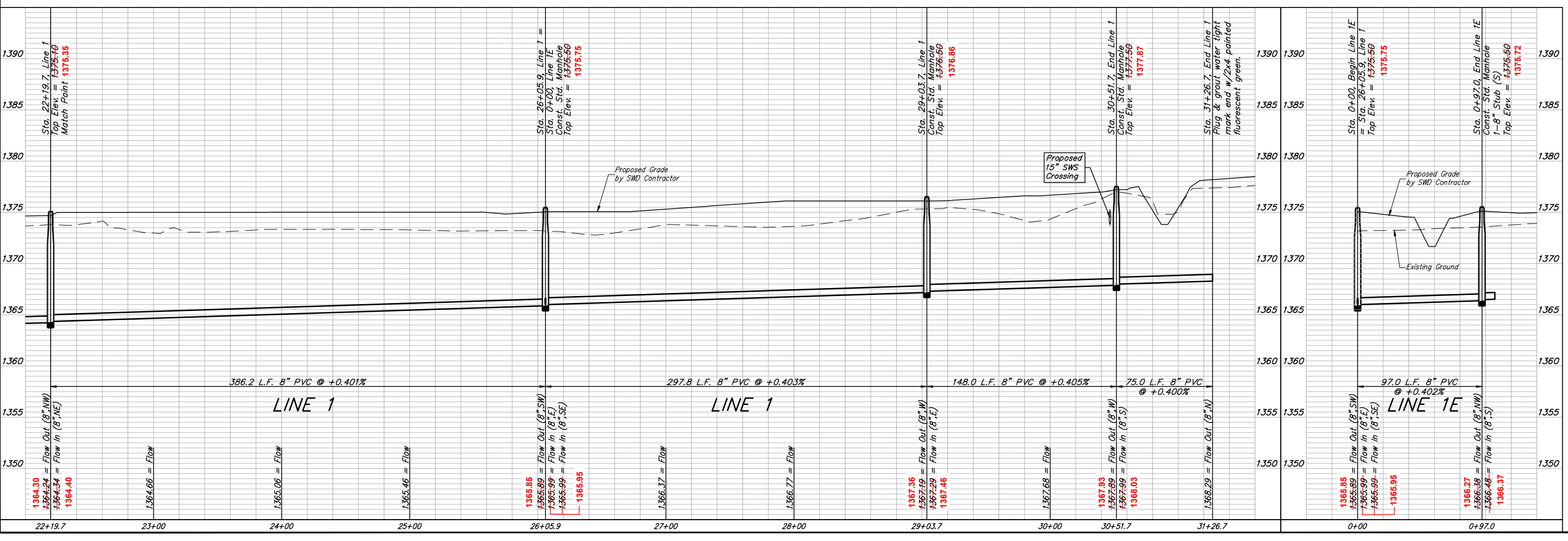
**BENCHMARKS:**  
 RR spike in asphalt, SW Cor.,  
 N1/2, SW1/4, Sec. 34, TWP. 26-S,  
 R-2-E.  
 Elev. = 1400.59 NAVD

RR spike in E. face of power pole,  
 174± N. of S. line, N1/2, SW1/4  
 & 49± E. of W. line, SW1/4, SEC.  
 34, TWP. 26-S, R-2-E.  
 Elev. = 1398.64 NAVD88

RR spike in S. face of power pole,  
 294± S. of N. line, SW1/4, &  
 48± E. of W. line, SW1/4, SEC. 34,  
 TWP. 26-S, R-2-E.  
 Elev. = 1386.14 NAVD88



**POND #3 DATA:**  
 STATIC POOL ELEVATION 1370.0  
 100-YR ELEVATION 1374.0  
 BOTTOM ELEVATION 1359.0



**BAUGHMAN COMPANY**  
 315 Ellis St.  
 Wichita, KS 67211  
 316-262-7271  
 BaughmanCo.com

---

Brookfield South Addition &  
 Brookfield South 2nd Addition  
 Phase I

## LINE 1 & LINE 1E

SANITARY SEWER IMPROVEMENTS

PROJECT NUMBER:  
 468-2022-012071

DESIGN: AEG DRAWN: JAK

DATE: Jun. 19, 2023

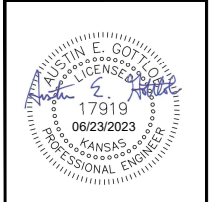
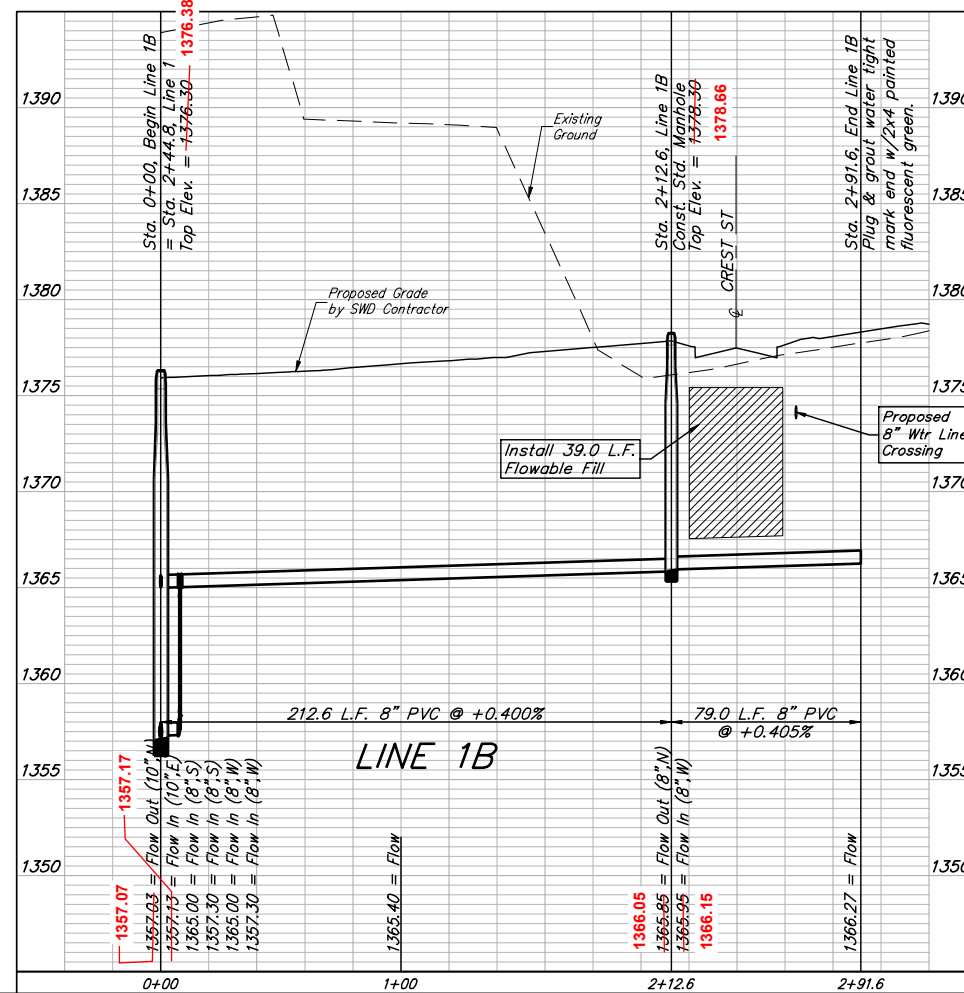
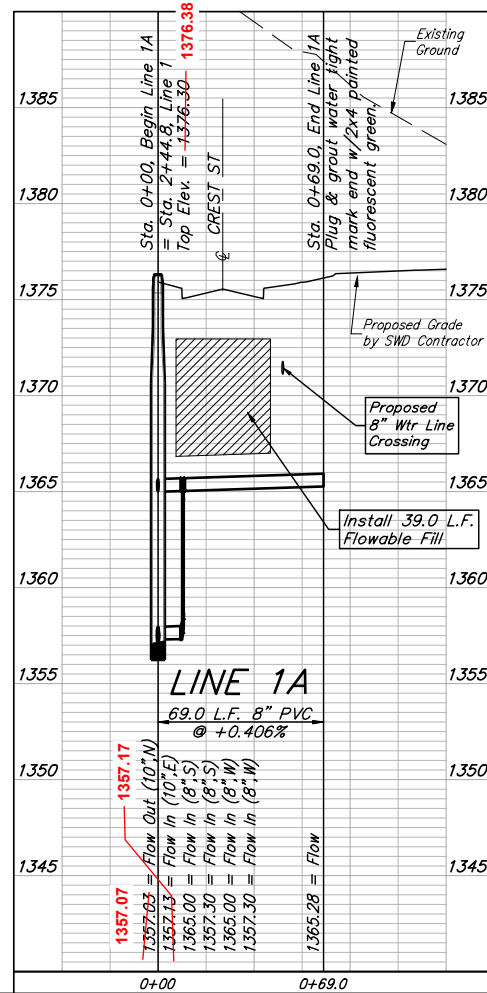
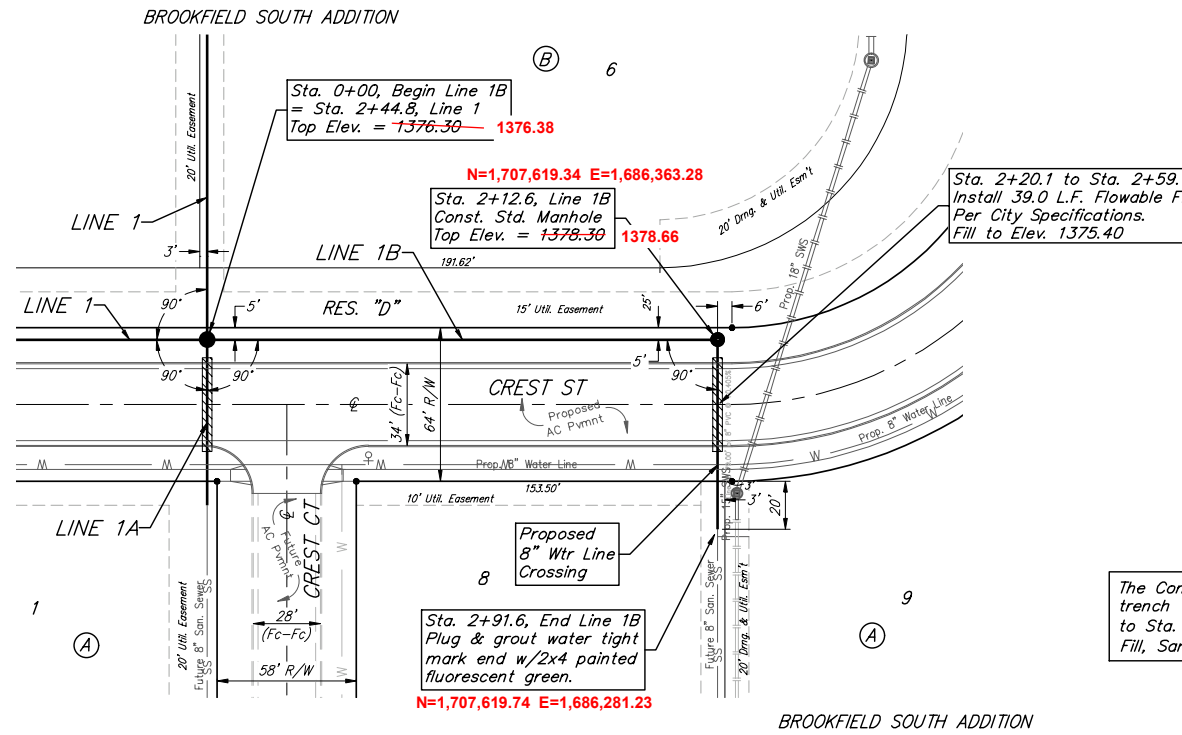
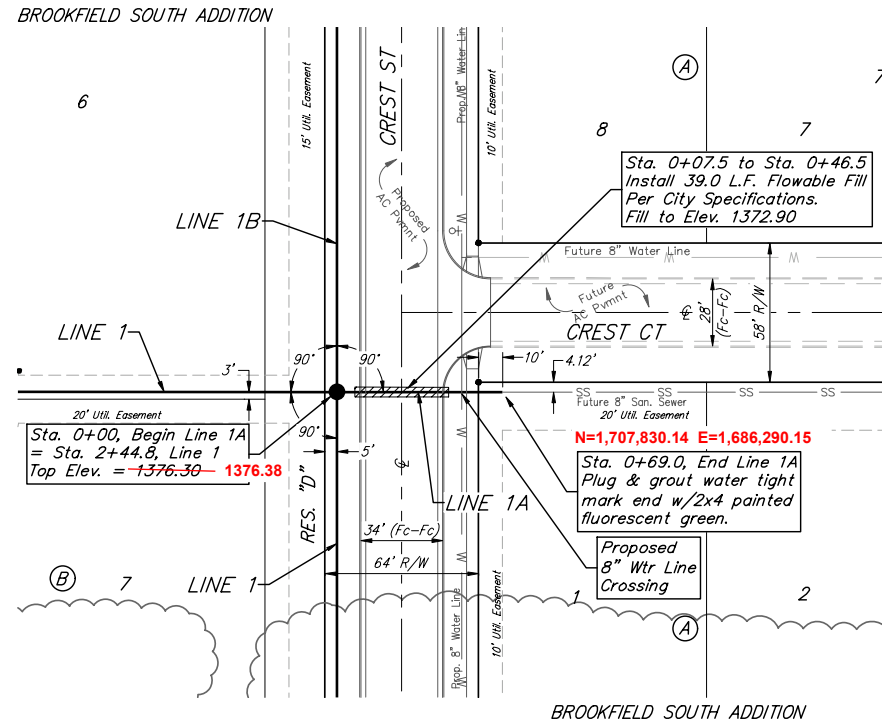
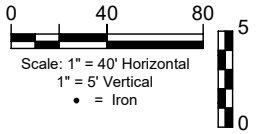
SHEET **5** OF **28**

File: E:\Projects\Brookfield South 2nd Addition\Engineering\Phase 1\SS\_22-03-E143.dwg

**BENCHMARKS:**  
 RR spike in asphalt, SW Cor.,  
 N1/2, SW1/4, Sec. 34, TWP. 26-S,  
 R-2-E.  
 Elev. = 1400.59 NAVD

RR spike in E. face of power pole,  
 174± N. of S. line, N1/2, SW1/4  
 & 49± E. of W. line, SW1/4, SEC.  
 34, TWP. 26-S, R-2-E.  
 Elev. = 1398.64 NAVD88

RR spike in S. face of power pole,  
 294± S. of N. line, SW1/4, &  
 48± E. of W. line, SW1/4, SEC. 34,  
 TWP. 26-S, R-2-E.  
 Elev. = 1386.14 NAVD88



**BAUGHMAN COMPANY**  
 315 Ellis St.  
 Wichita, KS 67211  
 316-262-7271  
 BaughmanCo.com

Brookfield South Addition & Brookfield South 2nd Addition Phase I

**LINE 1A & LINE 1B**

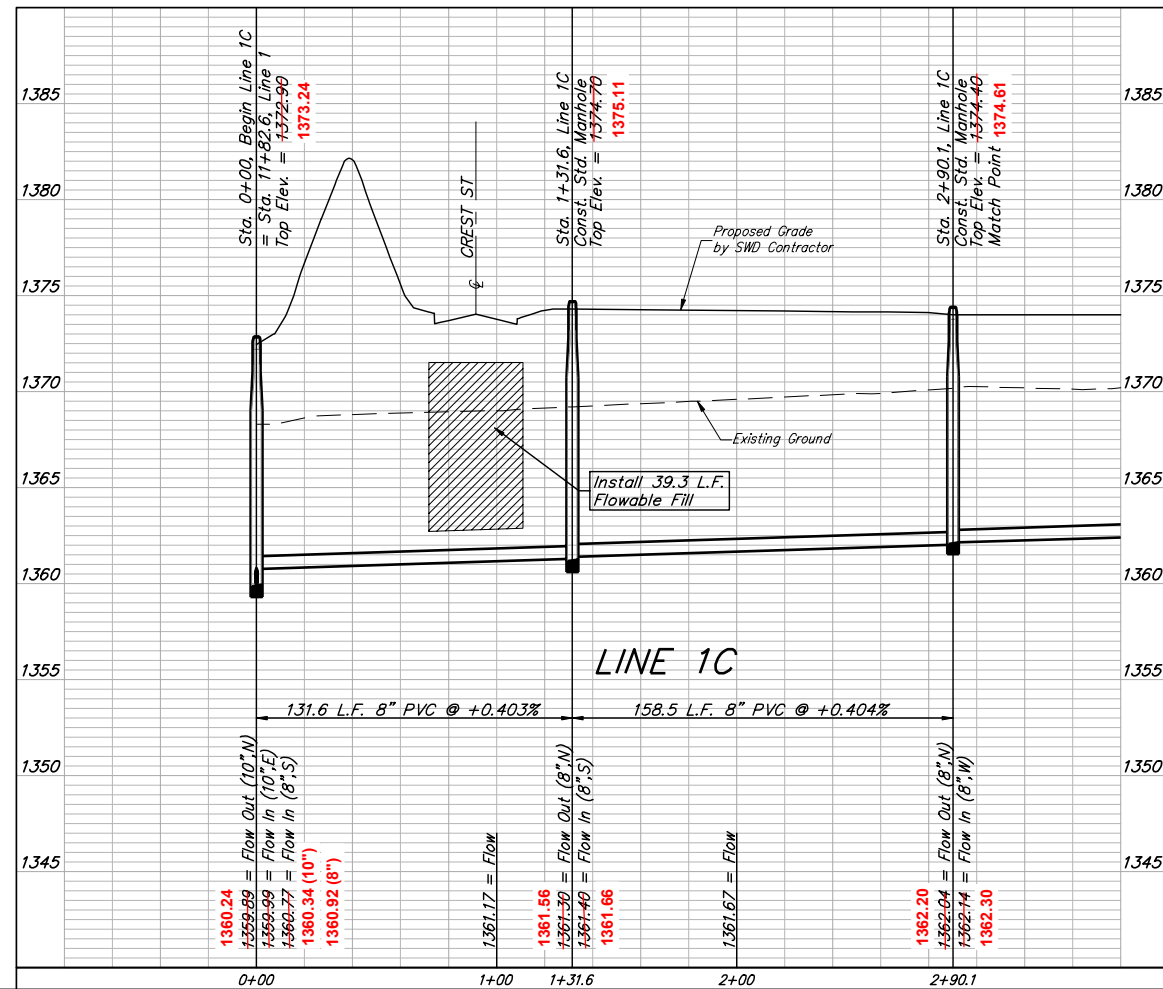
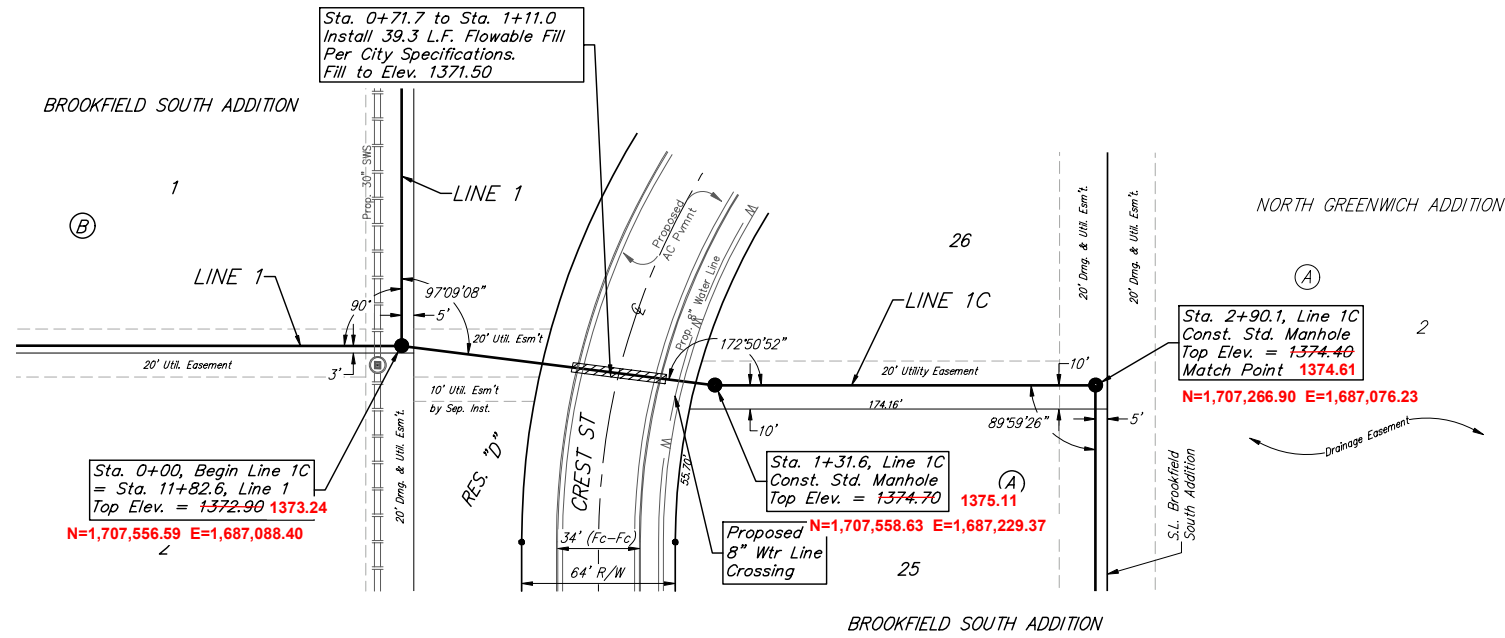
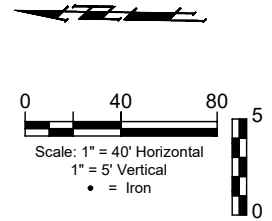
SANITARY SEWER IMPROVEMENTS  
 PROJECT NUMBER:  
 468-2022-012071  
 DESIGN: AEG DRAWN: JAK  
 DATE: JUN. 19, 2023  
 SHEET 6 OF 28

File: C:\Projects\Brookfield South 2nd Addition\Engineering\Phase 1\SS\_22-03-E143.dwg

BENCHMARKS:  
 RR spike in asphalt, SW Cor.,  
 N1/2, SW1/4, Sec. 34, TWP. 26-S,  
 R-2-E.  
 Elev. = 1400.59 NAVD

RR spike in E. face of power pole,  
 174± N. of S. line, N1/2, SW1/4  
 & 49± E. of W. line, SW1/4, SEC.  
 34, TWP. 26-S, R-2-E.  
 Elev. = 1398.64 NAVD88

RR spike in S. face of power pole,  
 294± S. of N. line, SW1/4, &  
 48± E. of W. line, SW1/4, SEC. 34,  
 TWP. 26-S, R-2-E.  
 Elev. = 1386.14 NAVD88



**BAUGHMAN  
 COMPANY**  
 315 Ellis St.  
 Wichita, KS 67211  
 316-262-7271  
 BaughmanCo.com

Brookfield South Addition &  
 Brookfield South 2nd Addition  
 Phase I

**LINE 1C**

SANITARY SEWER  
 IMPROVEMENTS

PROJECT NUMBER:  
 468-2022-012071

DESIGN: AEG DRAWN: JAK  
 DATE: Jun. 19, 2023

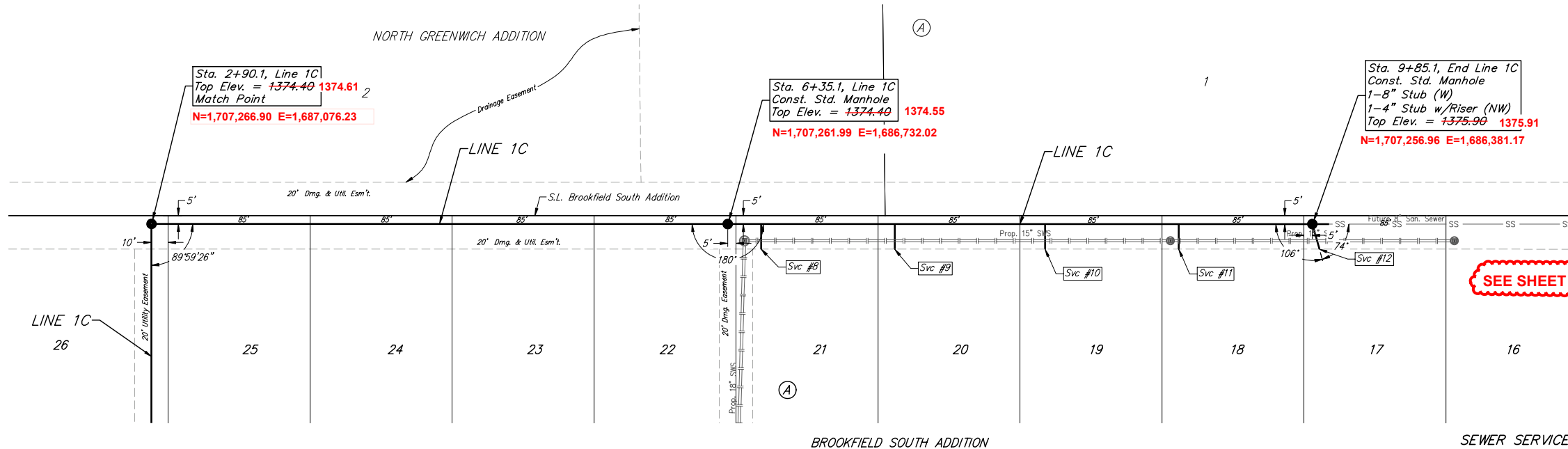
SHEET **7** OF **28**

File: C:\Projects\Brookfield South 2nd Addition\Engineering\Phase 1\SS\_22-03-E143.dwg

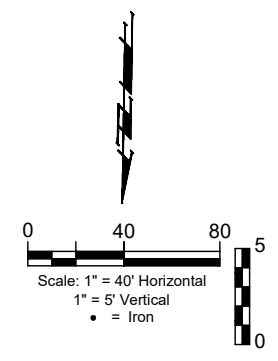
**BENCHMARKS:**  
 RR spike in asphalt, SW Cor.,  
 N1/2, SW1/4, Sec. 34, TWP. 26-S,  
 R-2-E.  
 Elev. = 1400.59 NAVD

RR spike in E. face of power pole,  
 174± N. of S. line, N1/2, SW1/4  
 & 49± E. of W. line, SW1/4, SEC.  
 34, TWP. 26-S, R-2-E.  
 Elev. = 1398.64 NAVD88

RR spike in S. face of power pole,  
 294± S. of N. line, SW1/4, &  
 48± E. of W. line, SW1/4, SEC. 34,  
 TWP. 26-S, R-2-E.  
 Elev. = 1386.14 NAVD88



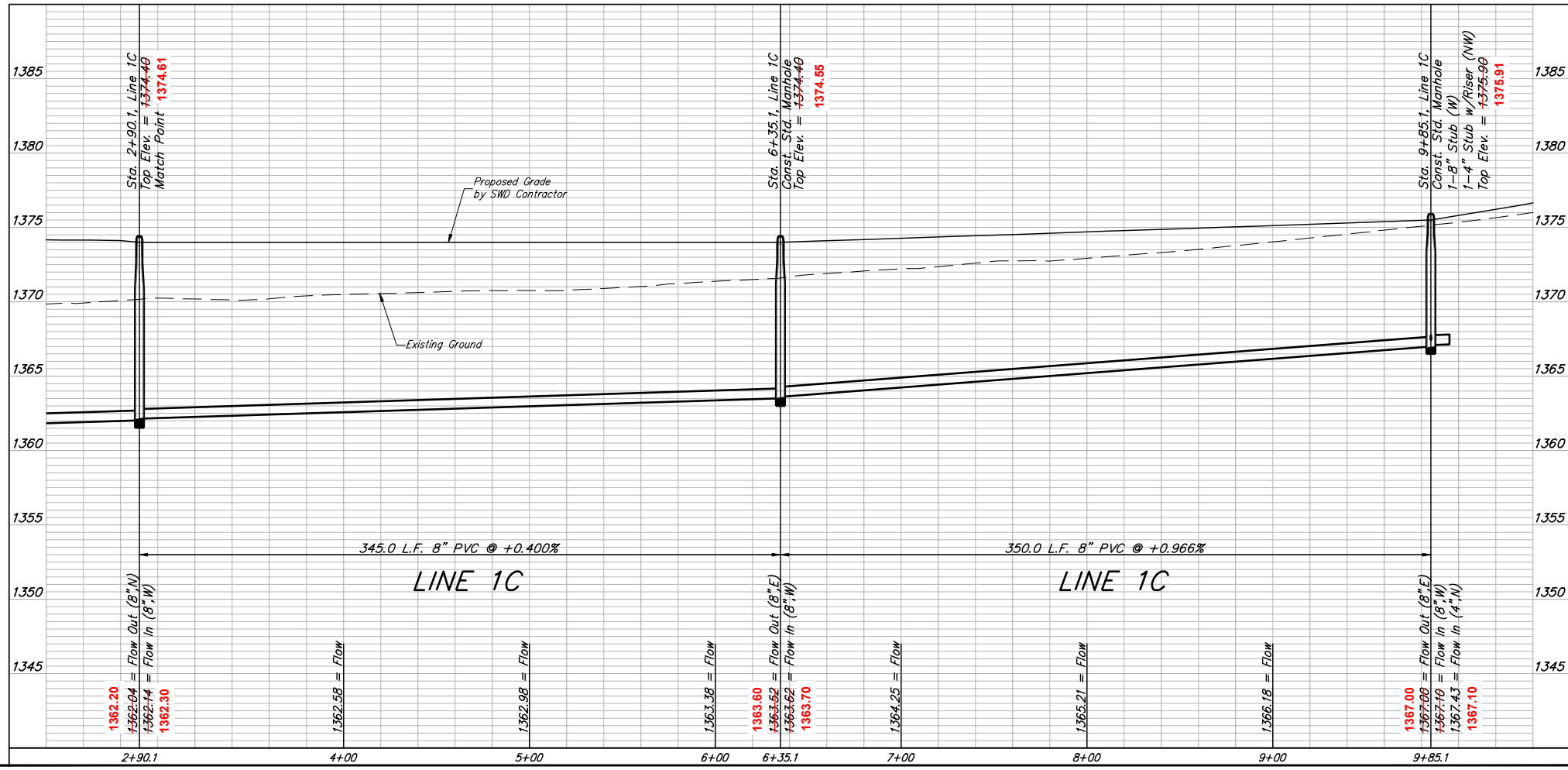
**SEE SHEET 8R FOR EXTENSION OF LINE 1C**



8: N=1,707,275.78 E=1,686,711.15  
 9: N=1,707,274.65 E=1,686,628.93  
 10: N=1,707,272.60 E=1,686,542.68  
 11: N=1,707,272.78 E=1,686,459.24  
 12: N=1,707,272.47 E=1,686,374.01

**SEWER SERVICE TABLE**

NUMBER	TYPE	LOCATION			FOR INFORMATION ONLY	
		LOT NO.	BLOCK NO.	LINE NO. STATION/DIRECTION	APPROXIMATE LENGTH 4" PIPE	
8	8" X 4" Tee	21	A	1C 6+55.1/Rt.	2.7'	15'
9	8" X 4" Tee	20	A	1C 7+35.1/Rt.	3.4'	15'
10	8" X 4" Tee	19	A	1C 8+25.1/Rt.	2.5'	15'
11	8" X 4" Tee	18	A	1C 9+05.1/Rt.	3.3'	15'
12	4" Stub	17	A	1C 9+85.1/Rt.	4.2'	15'



**BAUGHMAN COMPANY**  
 315 Ellis St.  
 Wichita, KS 67211  
 316-262-7271  
 BaughmanCo.com

Brookfield South Addition & Brookfield South 2nd Addition Phase I

**LINE 1C**

SANITARY SEWER IMPROVEMENTS

PROJECT NUMBER: 468-2022-012071  
 DESIGN: AEG DRAWN: JAK  
 DATE: Jun. 19, 2023

SHEET **8** OF **28**

File: C:\Projects\Brookfield South 2nd Addition\Engineering\Phase 1\SS\_22-03-E143.dwg

BENCHMARKS:  
RR spike in asphalt, SW Cor.,  
N1/2, SW1/4, Sec. 34, TWP. 26-S,  
R-2-E.  
Elev. = 1400.59 NAVD

RR spike in E. face of power pole,  
174± N. of S. line, N1/2, SW1/4  
& 49± E. of W. line, SW1/4, SEC.  
34, TWP. 26-S, R-2-E.  
Elev. = 1398.64 NAVD88

RR spike in S. face of power pole,  
294± S. of N. line, SW1/4, &  
48± E. of W. line, SW1/4, SEC. 34,  
TWP. 26-S, R-2-E.  
Elev. = 1386.14 NAVD88

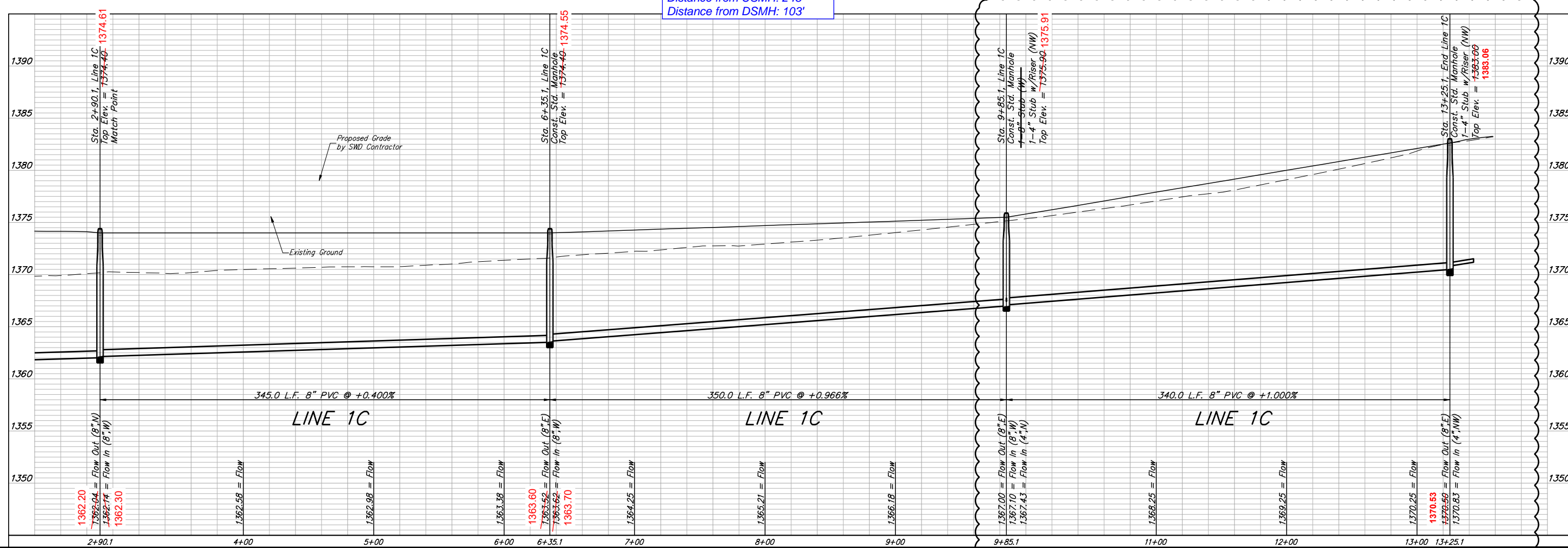
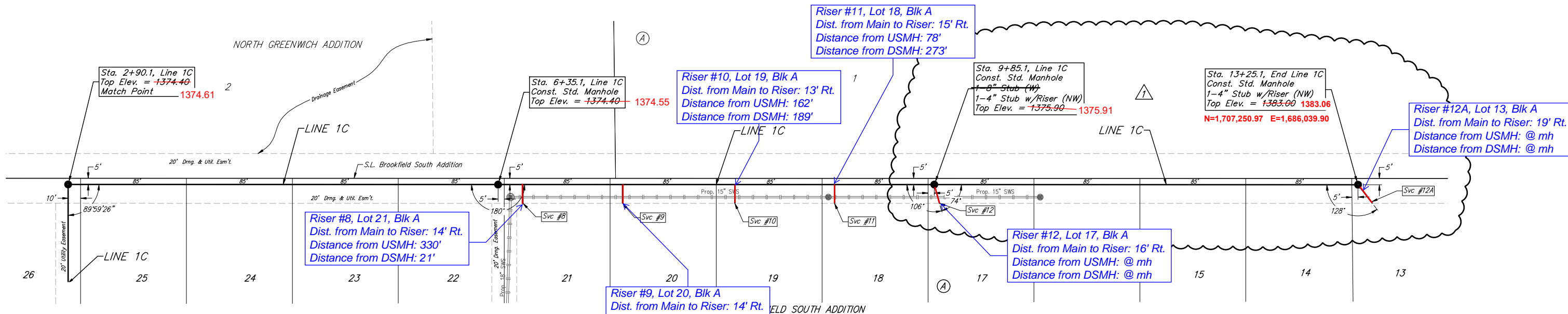
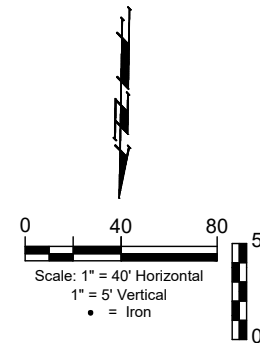
SEWER SERVICE TABLE

NUMBER	TYPE	LOCATION				FOR INFORMATION ONLY	
		LOT NO.	BLOCK NO.	LINE NO.	STATION/DIRECTION	APPROXIMATE LENGTH 4" PIPE	
8	8" X 4" Tee	21	A	1C	6+55.1/Rt.	2.7'	15'
9	8" X 4" Tee	20	A	1C	7+35.1/Rt.	3.4'	15'
10	8" X 4" Tee	19	A	1C	8+25.1/Rt.	2.5'	15'
11	8" X 4" Tee	18	A	1C	9+05.1/Rt.	3.3'	15'
12	4" Stub	17	A	1C	9+85.1/Rt.	4.2'	15'
12A	4" Stub	13	A	1C	13+25.1/Rt.	8.2'	19'

12A: N=1,707,265.17 E=1,686,029.21

REVISION RECORD

NO.	DATE	DESCRIPTION	DR.	BY
1	1/25/24	Addition of 1-Std. Manhole and 1-4" Stub w/Riser at Sta. 13+25.1, Line 1C and 340.0 L.F. 8" PVC from Sta. 9+85.1 to Sta. 13+25.1, Line 1C. Delete 1-8" Stub (W) at Sta. 9+85.1, Line 1C	JAK	AEG





**BAUGHMAN  
COMPANY**

315 Ellis St.  
Wichita, KS 67211  
316-262-7271  
BaughmanCo.com

---

Brookfield South Addition &  
Brookfield South 2nd Addition  
Phase I

**LINE 1C**

SANITARY SEWER  
IMPROVEMENTS

PROJECT NUMBER:  
468-2022-012071

DESIGN: AEG DRAWN: JAK

DATE: Jun. 19, 2023

SHEET **8R** OF **28**

File: C:\Projects\Brookfield South 2nd Addition\Engineering\Phase 1\SS\_22-03-E143.dwg

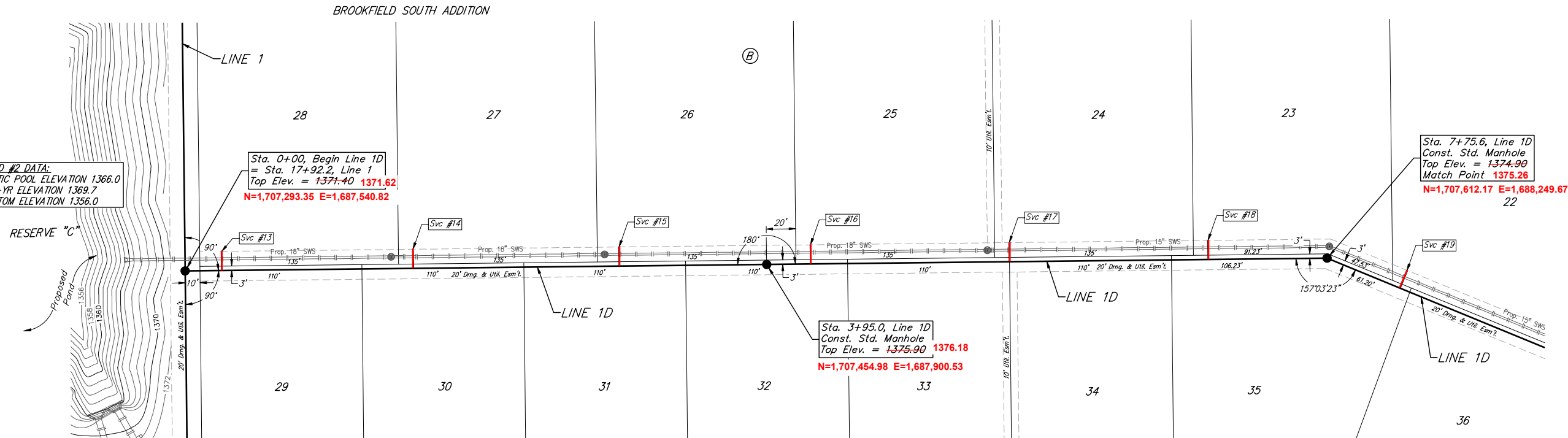
**BENCHMARKS:**  
 RR spike in asphalt, SW Cor.,  
 N1/2, SW1/4, Sec. 34, TWP. 26-S,  
 R-2-E.  
 Elev. = 1400.59 NAVD

RR spike in E. face of power pole,  
 174'± N. of S. line, N1/2, SW1/4  
 & 49'± E. of W. line, SW1/4, SEC.  
 34, TWP. 26-S, R-2-E.  
 Elev. = 1398.64 NAVD88

RR spike in S. face of power pole,  
 294'± S. of N. line, SW1/4, &  
 48'± E. of W. line, SW1/4, SEC. 34,  
 TWP. 26-S, R-2-E.  
 Elev. = 1386.14 NAVD88

**POND #2 DATA:**  
 STATIC POOL ELEVATION 1366.0  
 100-YR ELEVATION 1369.7  
 BOTTOM ELEVATION 1356.0

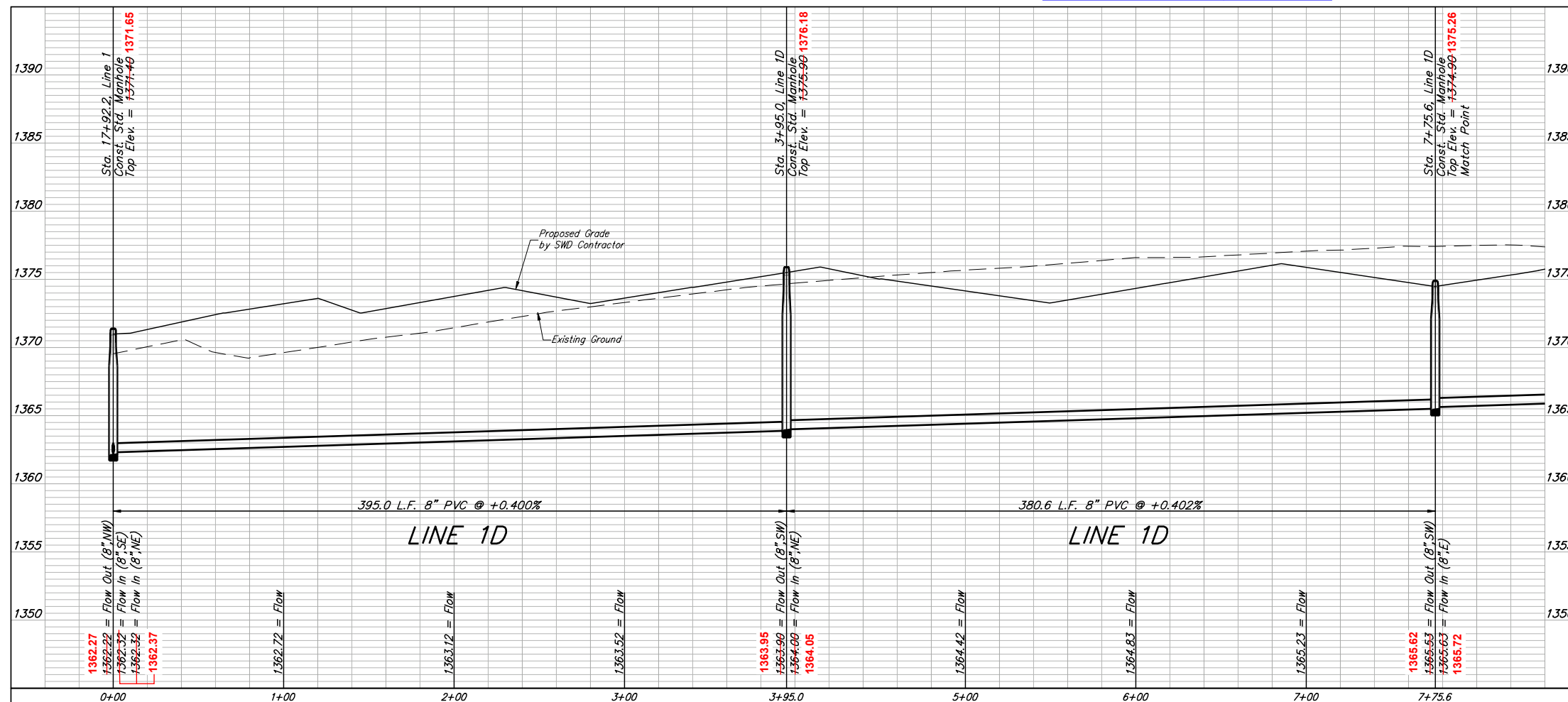
RESERVE "C"



SEWER SERVICE TABLE

NUMBER	TYPE	LOCATION			FOR INFORMATION ONLY		Distance from Main to Riser (Lt./Rt.)	Distance from		
		LOT NO.	BLOCK NO.	LINE NO.	STATION/DIRECTION	APPROXIMATE LENGTH 4" PIPE		Upstream MH	Downstream MH	
					VERTICAL	HORIZONTAL				
13	8" X 4" Tee	28	B	1D	0+25.0/Lt.	4.9'	13'	13' Lt.	370'	25'
14	8" X 4" Tee	27	B	1D	1+55.0/Lt.	5.7'	13'	13' Lt.	239'	156'
15	8" X 4" Tee	26	B	1D	2+95.0/Lt.	5.9'	13'	13' Lt.	99'	295'
16	8" X 4" Tee	25	B	1D	4+25.0/Lt.	7.6'	13'	14' Lt.	353'	30'
17	8" X 4" Tee	24	B	1D	5+60.0/Lt.	4.5'	13'	13' Lt.	228'	155'
18	8" X 4" Tee	23	B	1D	6+95.0/Lt.	6.2'	13'	14' Lt.	82'	301'

13: N=1,707,315.02 E=1,687,558.22  
 14: N=1,707,368.92 E=1,687,677.48  
 15: N=1,707,426.50 E=1,687,804.55  
 16: N=1,707,479.86 E=1,687,922.45  
 17: N=1,707,530.05 E=1,688,036.28  
 18: N=1,707,590.87 E=1,688,168.93



**BAUGHMAN COMPANY**  
 315 Ellis St.  
 Wichita, KS 67211  
 316-262-7271  
 BaughmanCo.com

Brookfield South Addition &  
 Brookfield South 2nd Addition  
 Phase I

**LINE 1D**

SANITARY SEWER  
 IMPROVEMENTS

PROJECT NUMBER:  
 468-2022-012071

DESIGN: AEG DRAWN: JAK

DATE: Jun. 19, 2023

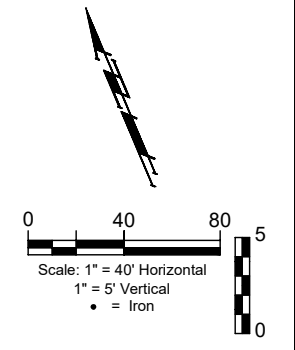
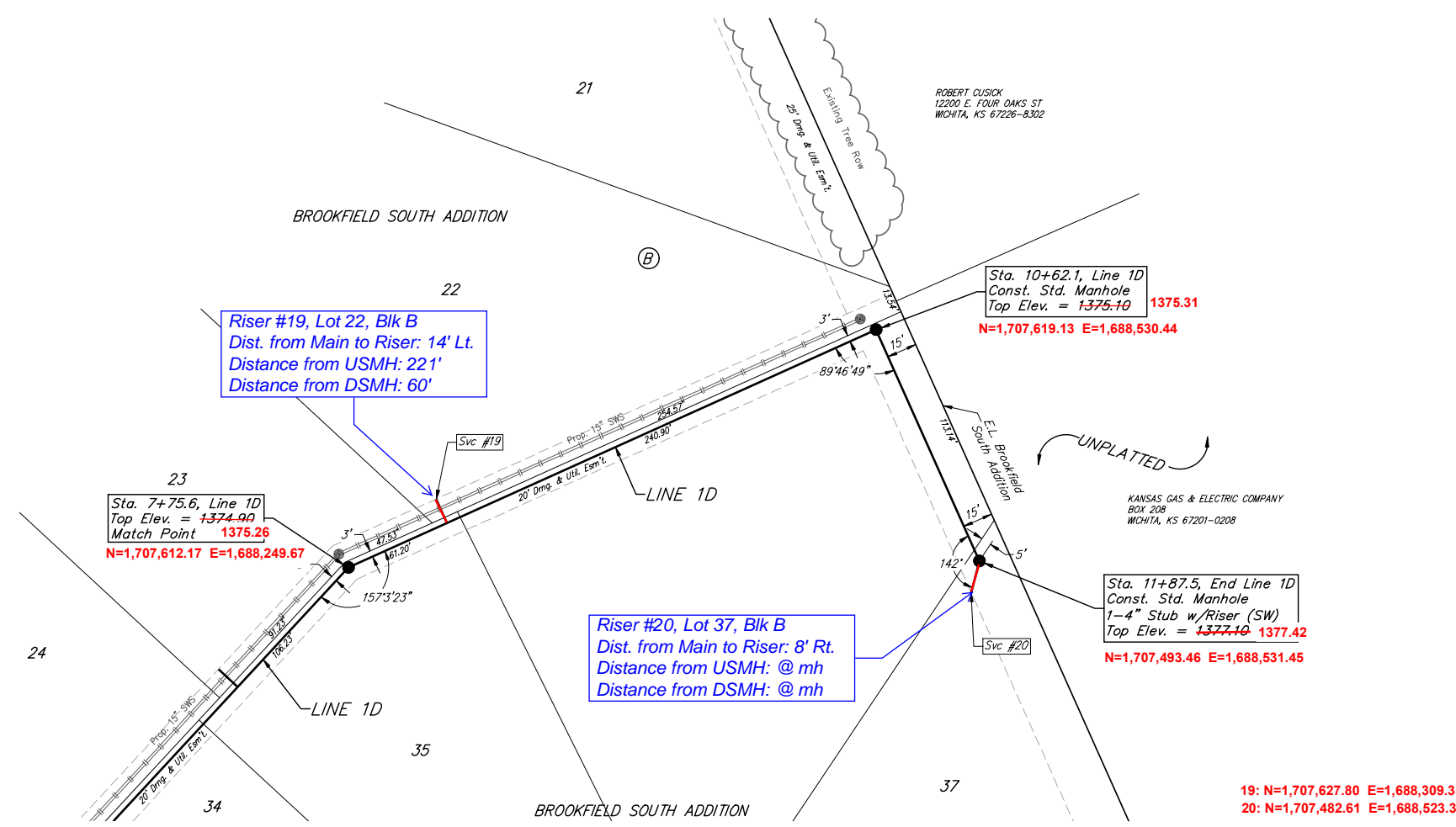
SHEET 9 OF 28

File: E:\Projects\Brookfield South 2nd Addition\Engineering\Phase 1\SS\_22-03-E143.dwg

**BENCHMARKS:**  
 RR spike in asphalt, SW Cor.,  
 N1/2, SW1/4, Sec. 34, TWP. 26-S,  
 R-2-E.  
 Elev. = 1400.59 NAVD

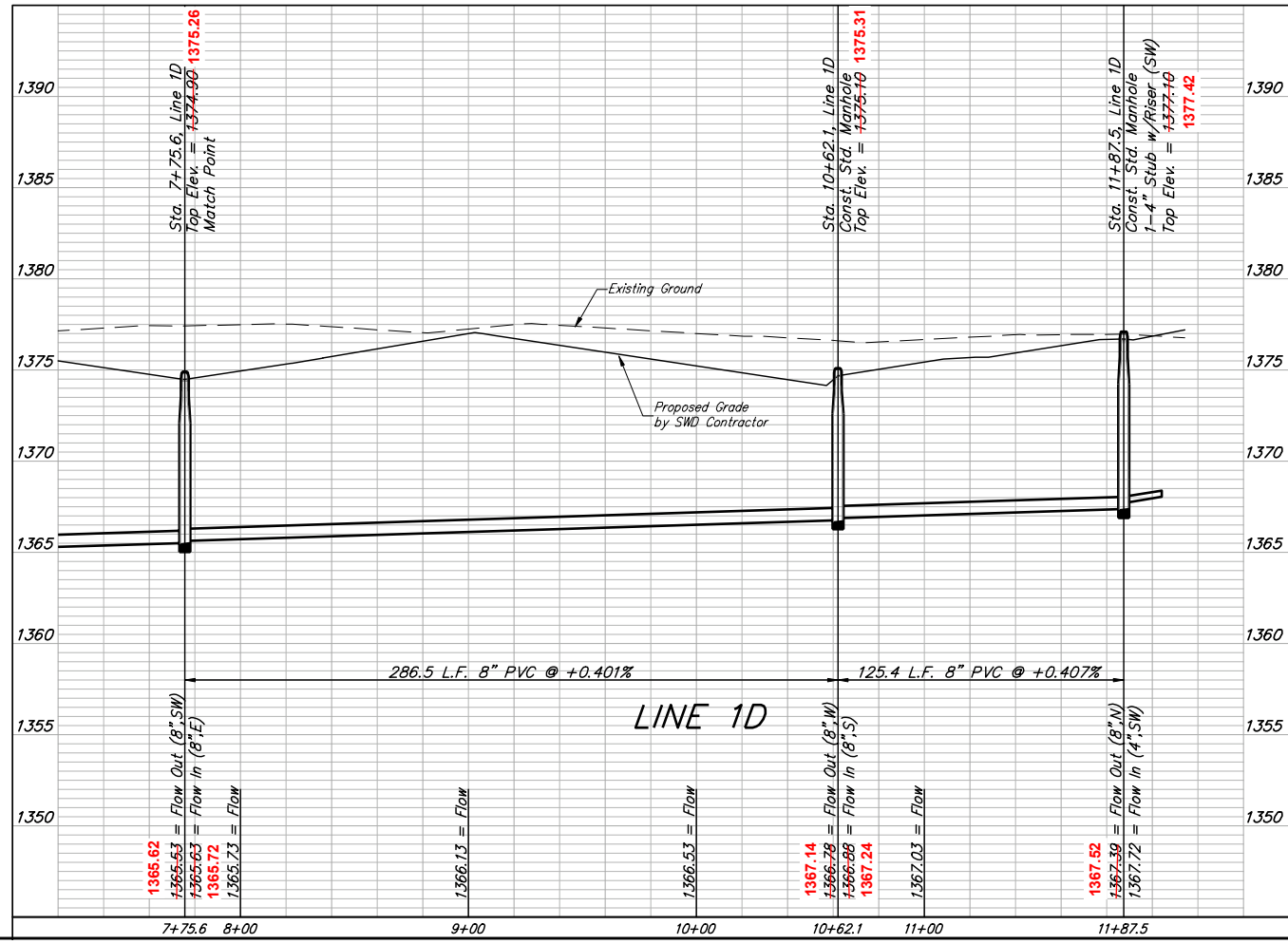
RR spike in E. face of power pole,  
 174± N. of S. line, N1/2, SW1/4  
 & 49± E. of W. line, SW1/4, SEC.  
 34, TWP. 26-S, R-2-E.  
 Elev. = 1398.64 NAVD88

RR spike in S. face of power pole,  
 294± S. of N. line, SW1/4, &  
 48± E. of W. line, SW1/4, SEC. 34,  
 TWP. 26-S, R-2-E.  
 Elev. = 1386.14 NAVD88



**SEWER SERVICE TABLE**

NUMBER	TYPE	LOCATION				FOR INFORMATION ONLY	
		LOT NO.	BLOCK NO.	LINE NO.	STATION/DIRECTION	APPROXIMATE LENGTH 4" PIPE	
						VERTICAL	HORIZONTAL
19	8" X 4" Tee	22	B	1D	8+29.2/Lt.	6'	12'
20	4" Stub	37	B	1D	11+87.5/Rt.	4.6'	16'



**BAUGHMAN COMPANY**  
 315 Ellis St.  
 Wichita, KS 67211  
 316-262-7271  
 BaughmanCo.com

Brookfield South Addition &  
 Brookfield South 2nd Addition  
 Phase I

**LINE 1D**

SANITARY SEWER  
 IMPROVEMENTS

PROJECT NUMBER:  
 468-2022-012071

DESIGN: AEG DRAWN: JAK  
 DATE: Jun. 19, 2023

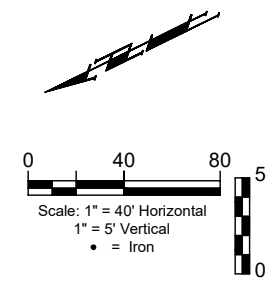
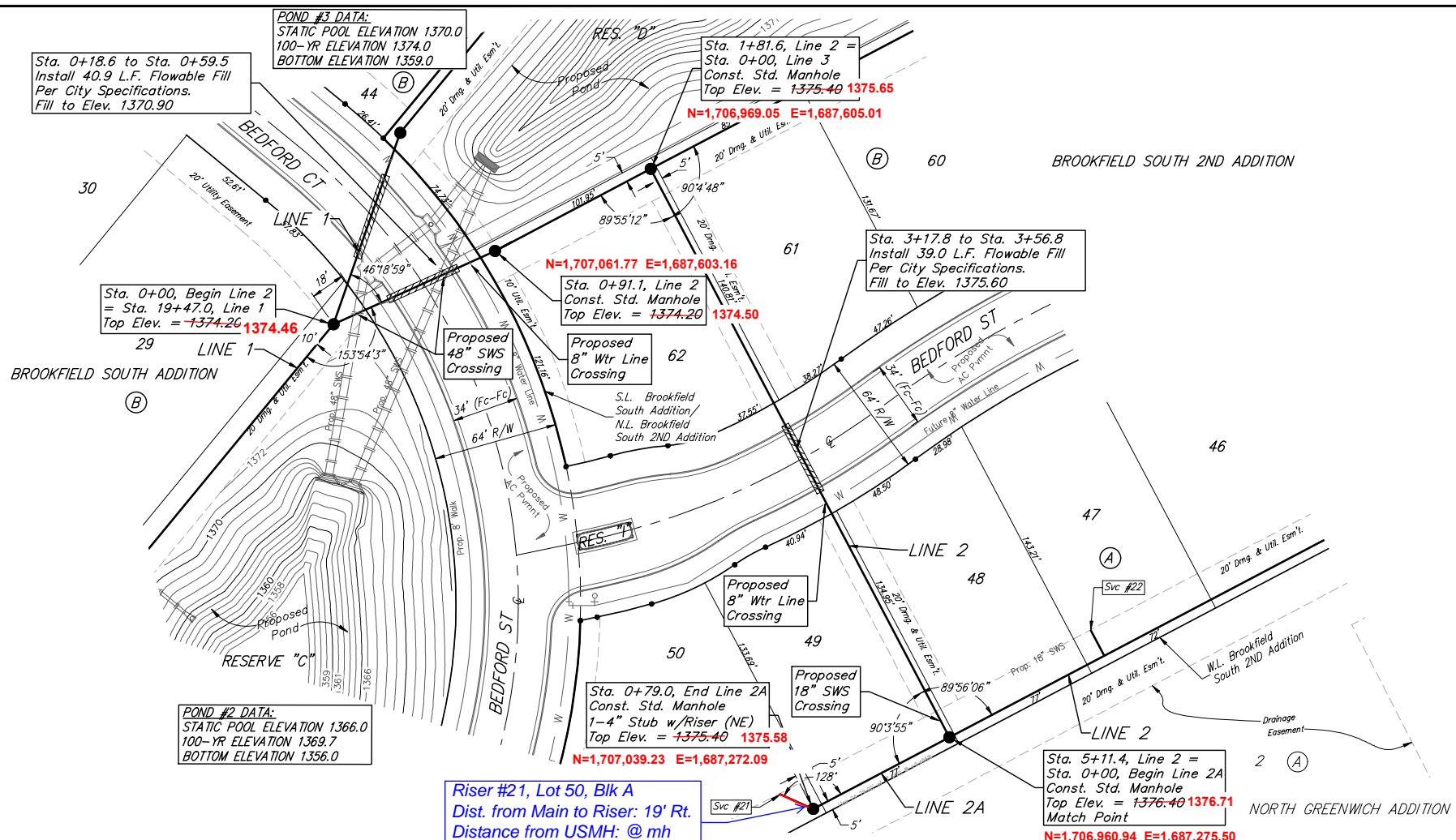
SHEET **10** OF **28**

File: C:\Projects\Brookfield South 2nd Addition\Engineering\Phase 1\SS\_22-03-E143.dwg

**BENCHMARKS:**  
 RR spike in asphalt, SW Cor.,  
 N1/2, SW1/4, Sec. 34, TWP. 26-S,  
 R-2-E.  
 Elev. = 1400.59 NAVD

R.R. spike in E. face of power pole,  
 174'± N. of S. line, N1/2, SW1/4  
 & 49'± E. of W. line, SW1/4, SEC.  
 34, TWP. 26-S, R-2-E.  
 Elev. = 1398.64 NAVD88

R.R. spike in S. face of power pole,  
 294'± S. of N. line, SW1/4, &  
 48'± E. of W. line, SW1/4, SEC.  
 34, TWP. 26-S, R-2-E.  
 Elev. = 1386.14 NAVD88

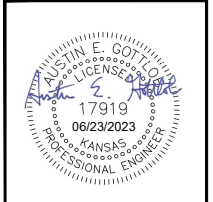
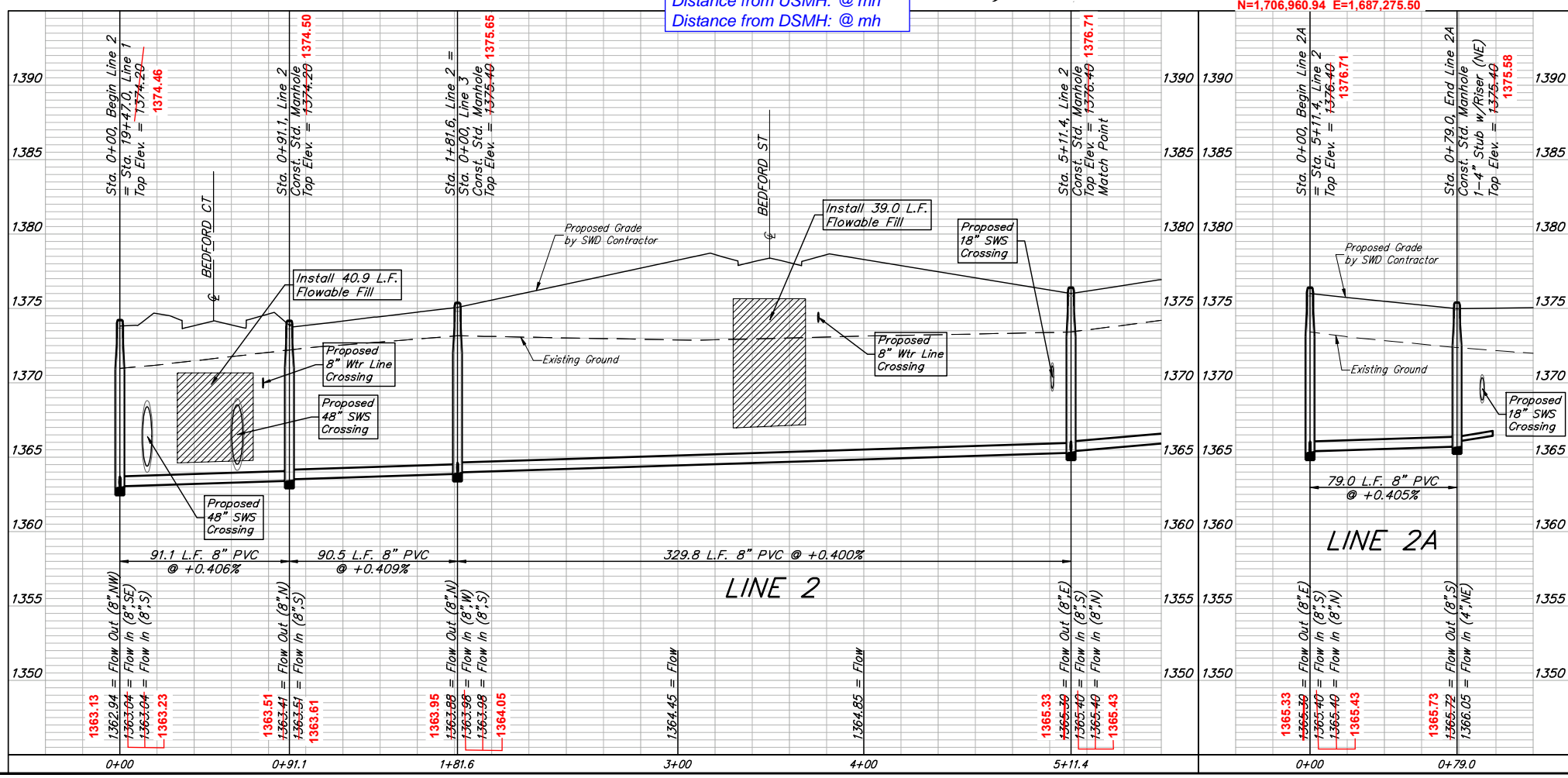


SEWER SERVICE TABLE

NUMBER	TYPE	LOCATION				FOR INFORMATION ONLY	
		LOT NO.	BLOCK NO.	LINE NO.	STATION/DIRECTION	APPROXIMATE LENGTH 4" PIPE	VERTICAL
21	4" Stub	50	A	2A	0+77.0/Rt.	1'	19'

21: N=1,707,052.73 E=1,687,287.73

Riser #21, Lot 50, Blk A  
 Dist. from Main to Riser: 19' Rt.  
 Distance from USMH: @ mh  
 Distance from DSMH: @ mh



**BAUGHMAN COMPANY**  
 315 Ellis St.  
 Wichita, KS 67211  
 316-262-7271  
 BaughmanCo.com

Brookfield South Addition &  
 Brookfield South 2nd Addition  
 Phase I

**LINE 2 & LINE 2A**

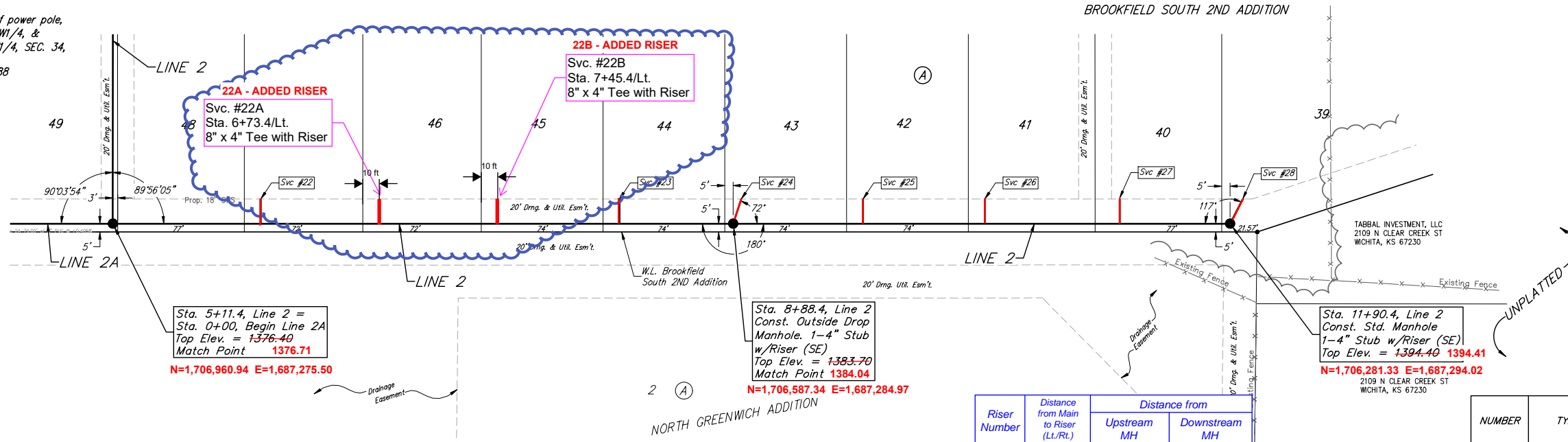
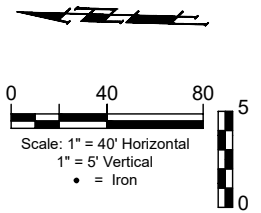
SANITARY SEWER  
 IMPROVEMENTS  
 PROJECT NUMBER:  
 468-2022-012071  
 DESIGN: AEG DRAWN: JAK  
 DATE: Jun. 19, 2023  
 SHEET 11 OF 28

File: E:\Projects\Brookfield South 2nd Addition\Engineering\Phase 1\SS\_22-03-E143.dwg

**BENCHMARKS:**  
 RR spike in asphalt, SW Cor.,  
 N1/2, SW1/4, Sec. 34, TWP. 26-S,  
 R-2-E.  
 Elev. = 1400.59 NAVD

R.R. spike in E. face of power pole,  
 174± N. of S. line, N1/2, SW1/4  
 & 49± E. of W. line, SW1/4, SEC.  
 34, TWP. 26-S, R-2-E.  
 Elev. = 1398.64 NAVD88

RR. spike in S. face of power pole,  
 294± S. of N. line, SW1/4, &  
 48± E. of W. line, SW1/4, SEC. 34,  
 TWP. 26-S, R-2-E.  
 Elev. = 1386.14 NAVD88



Sta. 5+11.4, Line 2 =  
 Sta. 0+00, Begin Line 2A  
 Top Elev. = 1376.40  
 Match Point 1376.71  
 N=1,706,960.94 E=1,687,275.50

Sta. 8+88.4, Line 2  
 Const. Outside Drop  
 Manhole. 1-4" Stub  
 w/Riser (SE)  
 Top Elev. = 1383.70  
 Match Point 1384.04  
 N=1,706,587.34 E=1,687,284.97

Sta. 11+90.4, Line 2  
 Const. Std. Manhole  
 1-4" Stub w/Riser (SE)  
 Top Elev. = 1394.40 1394.41  
 N=1,706,281.33 E=1,687,294.02  
 2109 N CLEAR CREEK ST  
 WICHITA, KS 67230

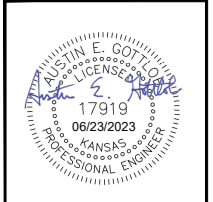
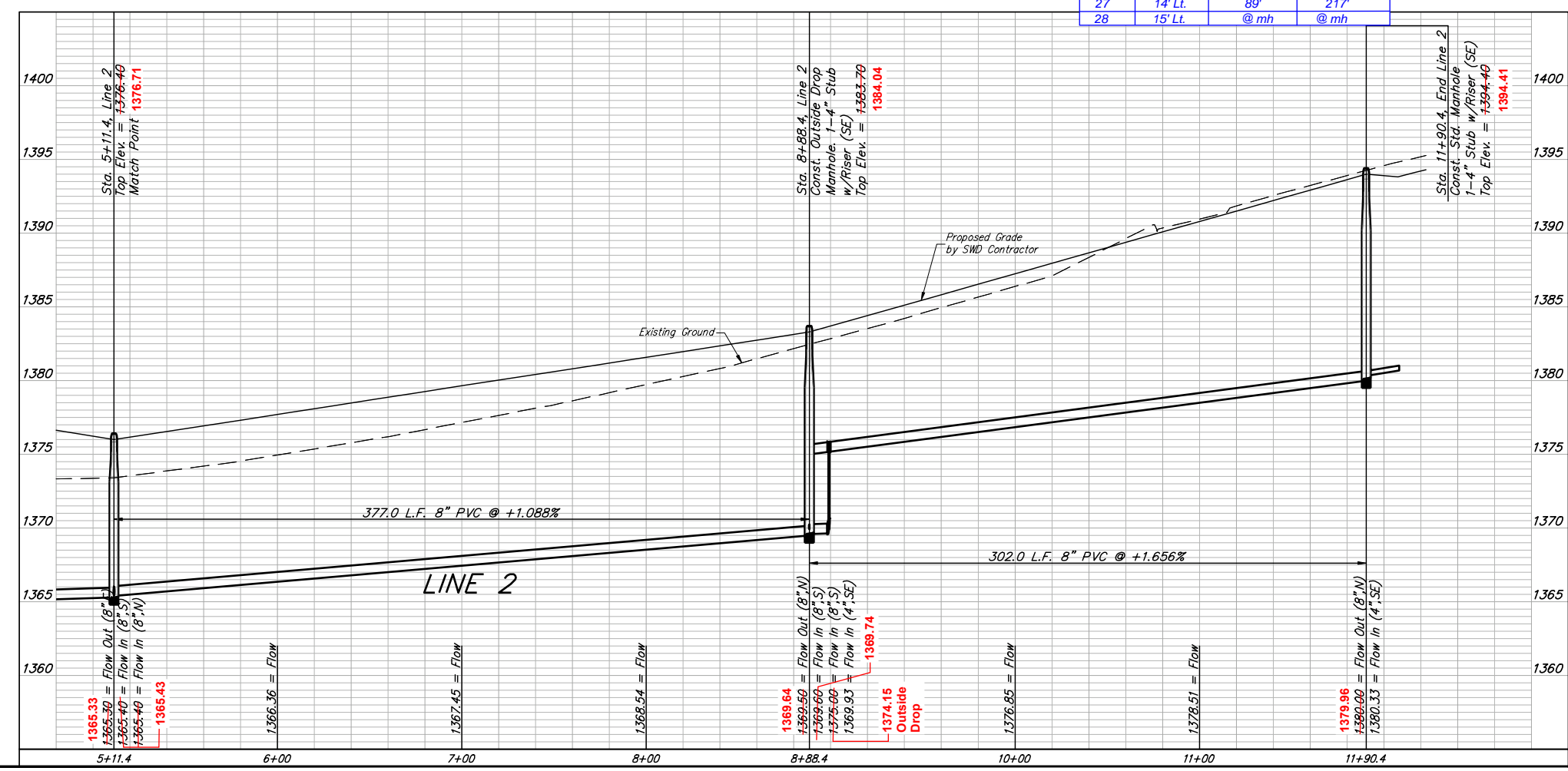
Riser Number	Distance from Main to Riser (L/R)	Distance from	
		Upstream MH	Downstream MH
22	15' Lt.	284'	90'
22A	16' Lt.	212'	162'
22B	15' Lt.	139'	235'
23	16' Lt.	65'	309'
24	14' Lt.	@ mh	@ mh
25	15' Lt.	235'	72'
26	15' Lt.	161'	146'
27	14' Lt.	89'	217'
28	15' Lt.	@ mh	@ mh

22: N=1,706,871.30 E=1,687,292.29  
 23: N=1,706,652.64 E=1,687,298.91  
 24: N=1,706,581.57 E=1,687,298.96  
 25: N=1,706,516.36 E=1,687,302.28  
 26: N=1,706,442.30 E=1,687,304.40  
 27: N=1,706,370.61 E=1,687,305.19  
 28: N=1,706,275.25 E=1,687,309.05

SEWER SERVICE TABLE

NUMBER	TYPE	LOCATION				FOR INFORMATION ONLY	
		LOT NO.	BLOCK NO.	LINE NO.	STATION/DIRECTION	APPROXIMATE LENGTH 4" PIPE	VERTICAL
22	8" X 4" Tee	47	A	2	6+01.4/Lt.	4.7'	15'
23	8" X 4" Tee	44	A	2	8+19.4/Lt.	10.0'	15'
24	4" Stub	43	A	2	8+31.1/Lt.	5.7'	15'
25	8" X 4" Tee	42	A	2	9+57.1/Lt.	7.2'	15'
26	8" X 4" Tee	41	A	2	10+31.1/Lt.	7.8'	15'
27	8" X 4" Tee	40	A	2	11+03.1/Lt.	9.2'	15'
28	4" Stub	39	A	2	11+95.9/Lt.	10.4'	15'

22A: N=1,706,799.83 E=1,687,295.63  
 22B: N=1,706,726.78 E=1,687,296.36



**BAUGHMAN COMPANY**  
 315 Ellis St.  
 Wichita, KS 67211  
 316-262-7271  
 BaughmanCo.com

Brookfield South Addition &  
 Brookfield South 2nd Addition  
 Phase I

**LINE 2**  
 SANITARY SEWER  
 IMPROVEMENTS  
 PROJECT NUMBER:  
 468-2022-012071  
 DESIGN: AEG DRAWN: JAK  
 DATE: Jun. 19, 2023  
 SHEET 12 OF 28

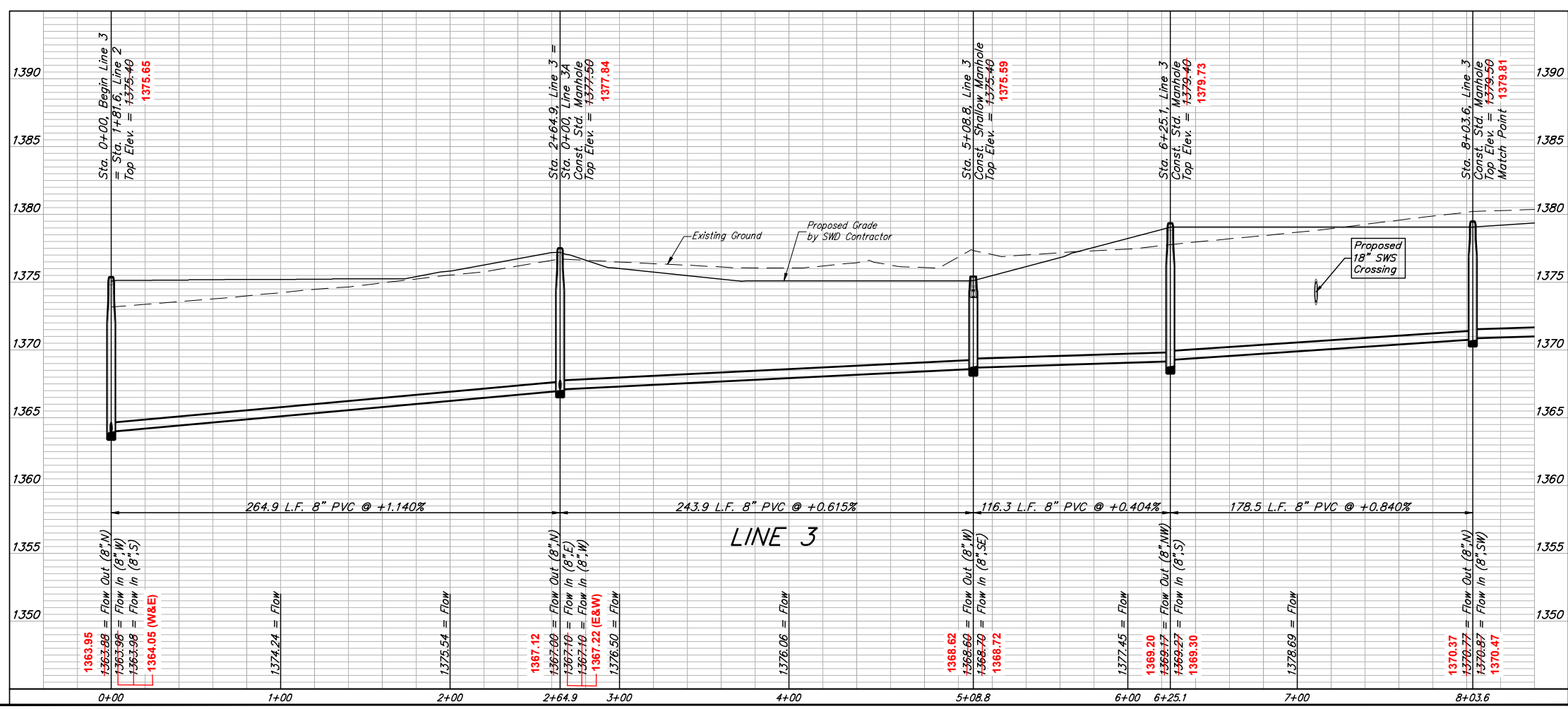
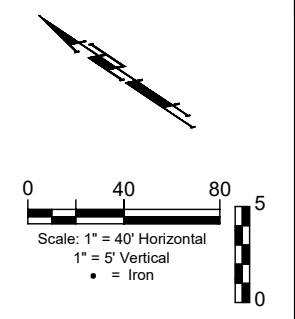
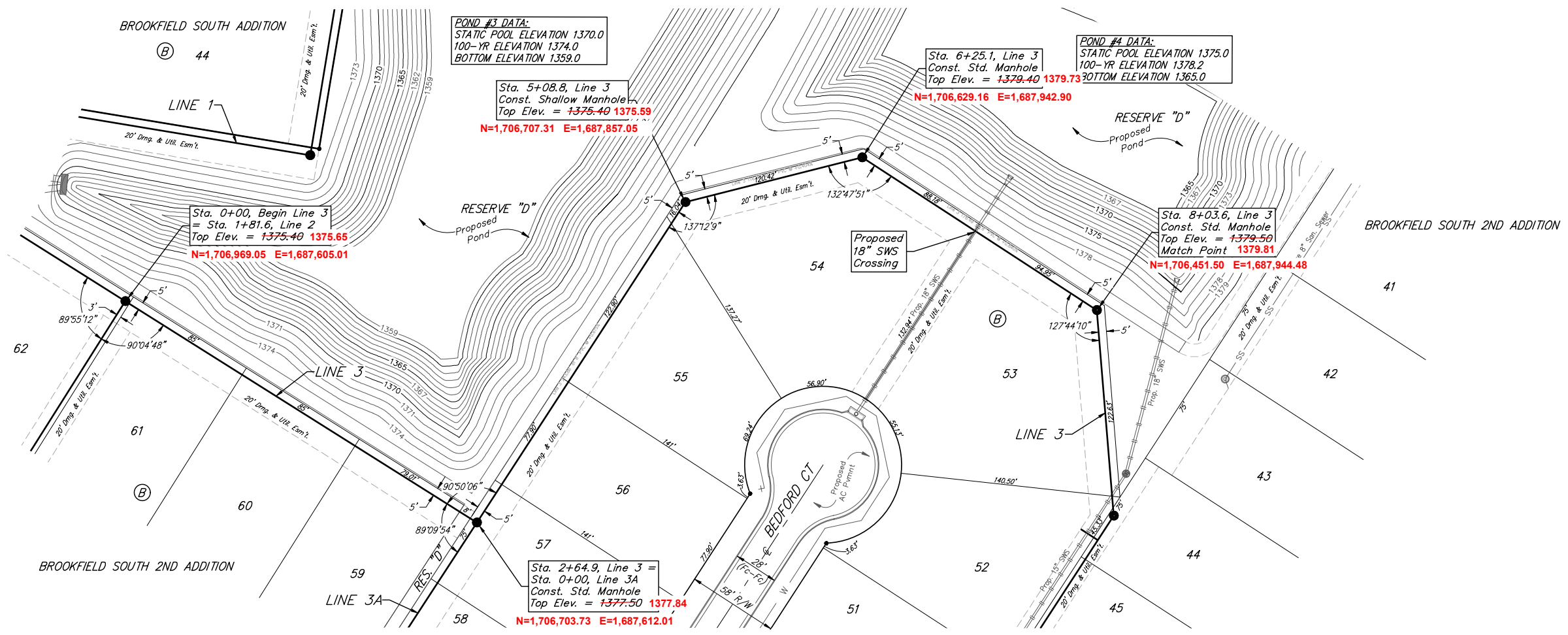
Rev. 11/1/2023, Added Risers to Lots 45-46, Blk A - AEG

File: C:\Projects\Brookfield South 2nd Addition\Engineering\Phase 1\SS\_22-03-E143.dwg

**BENCHMARKS:**  
 RR spike in asphalt, SW Cor.,  
 N1/2, SW1/4, Sec. 34, TWP. 26-S,  
 R-2-E.  
 Elev. = 1400.59 NAVD

RR spike in E. face of power pole,  
 174± N. of S. line, N1/2, SW1/4  
 & 49± E. of W. line, SW1/4, SEC.  
 34, TWP. 26-S, R-2-E.  
 Elev. = 1398.64 NAVD88

RR spike in S. face of power pole,  
 294± S. of N. line, SW1/4, &  
 48± E. of W. line, SW1/4, SEC. 34,  
 TWP. 26-S, R-2-E.  
 Elev. = 1386.14 NAVD88



**BAUGHMAN COMPANY**  
 315 Ellis St.  
 Wichita, KS 67211  
 316-262-7271  
 BaughmanCo.com

Project: Brookfield South Addition & Brookfield South 2nd Addition Phase I

**LINE 3**

SANITARY SEWER IMPROVEMENTS

PROJECT NUMBER: 468-2022-012071

DESIGN: AEG DRAWN: JAK

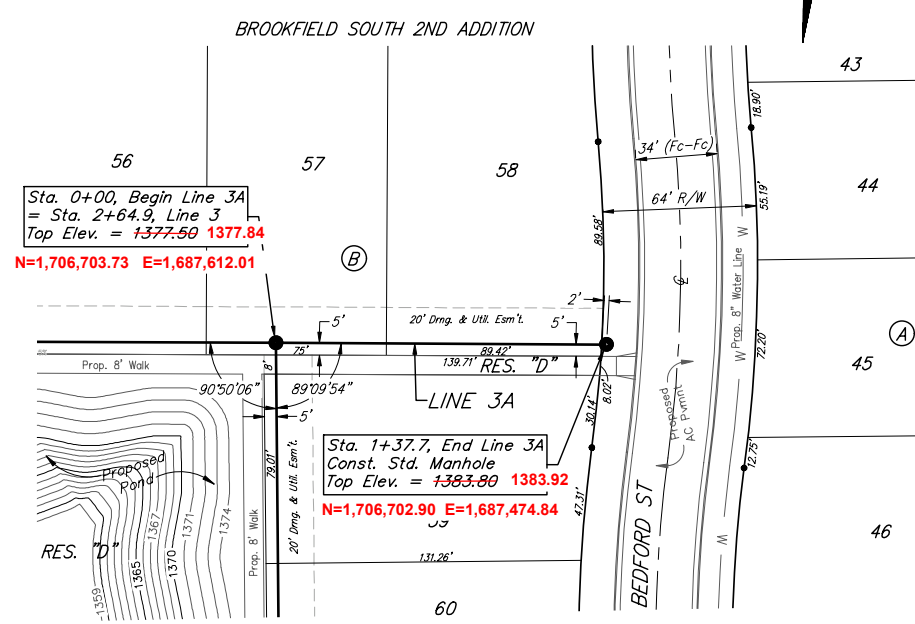
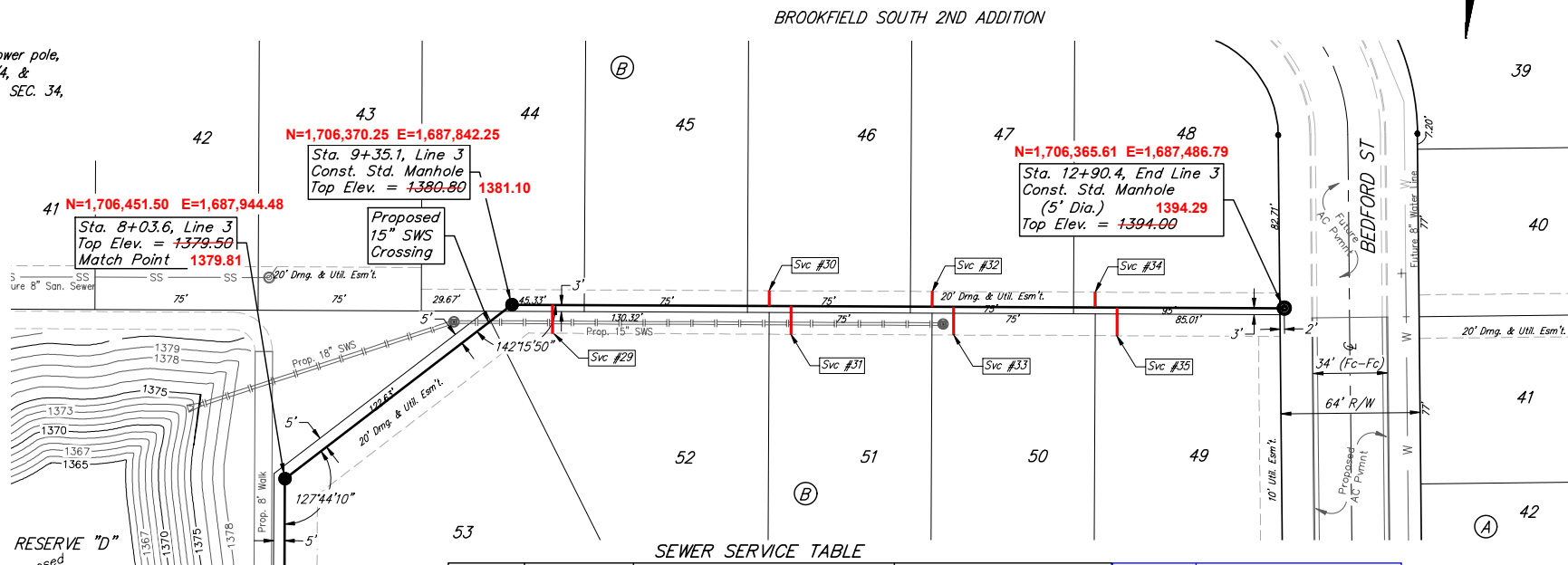
DATE: Jun. 19, 2023

SHEET 13 OF 28

**BENCHMARKS:**  
 RR spike in asphalt, SW Cor.,  
 N1/2, SW1/4, Sec. 34, TWP. 26-S,  
 R-2-E.  
 Elev. = 1400.59 NAVD

RR spike in E. face of power pole,  
 174'± N. of S. line, N1/2, SW1/4  
 & 49'± E. of W. line, SW1/4, SEC.  
 34, TWP. 26-S, R-2-E.  
 Elev. = 1398.64 NAVD88

RR spike in S. face of power pole,  
 294'± S. of N. line, SW1/4, &  
 48'± E. of W. line, SW1/4, SEC. 34,  
 TWP. 26-S, R-2-E.  
 Elev. = 1386.14 NAVD88

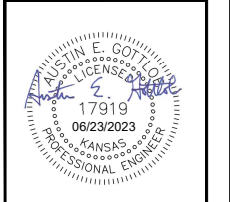
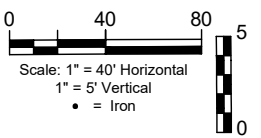
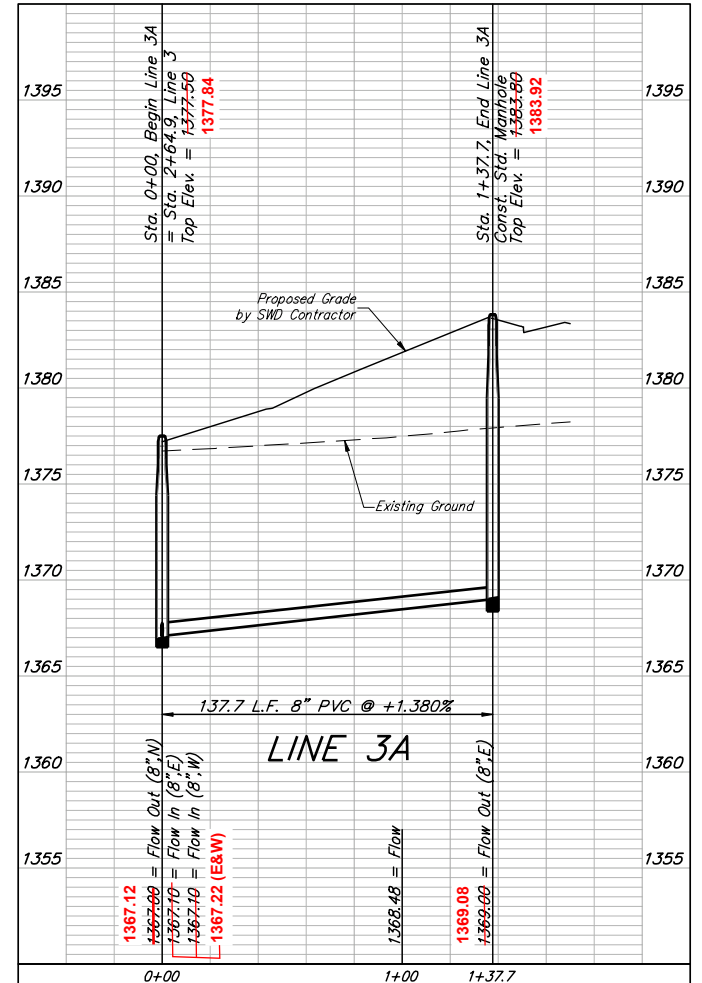
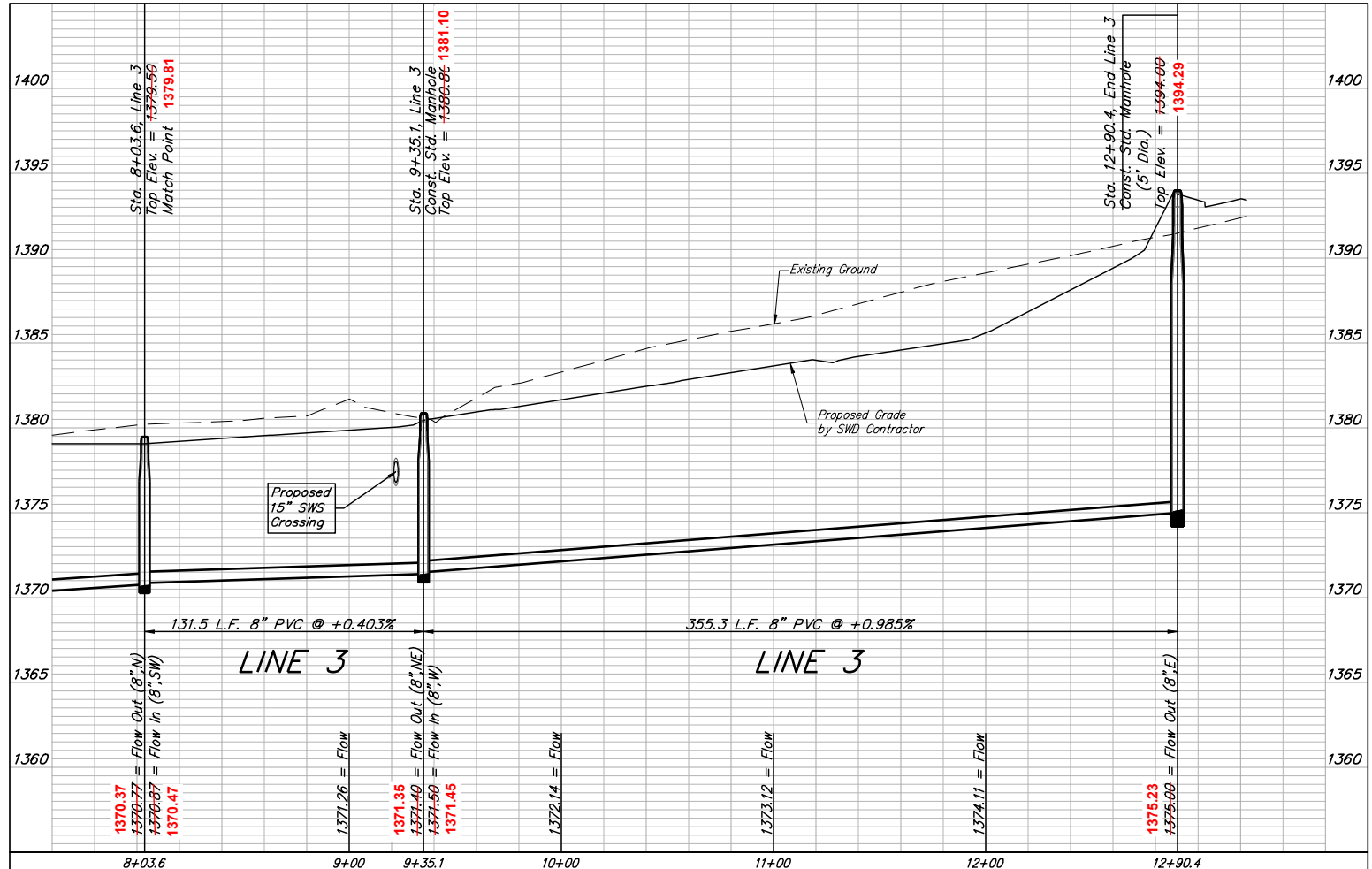


**SEWER SERVICE TABLE**

NUMBER	TYPE	LOCATION				FOR INFORMATION ONLY		Distance from		
		LOT NO.	BLOCK NO.	LINE NO.	STATION/DIRECTION	APPROXIMATE LENGTH 4" PIPE		Distance from Main to Riser (L/R)	Upstream MH	Downstream MH
29	8" X 4" Tee	52	B	3	9+53.9/Rt.	4.6'	13'	13' Rt.	337'	18'
30	8" X 4" Tee	46	B	3	10+53.4/Lt.	6.1'	7'	7' Lt.	238'	118'
31	8" X 4" Tee	51	B	3	10+63.4/Rt.	5.7'	13'	13' Rt.	229'	127'
32	8" X 4" Tee	47	B	3	11+28.4/Lt.	6.8'	7'	8' Lt.	162'	194'
33	8" X 4" Tee	50	B	3	11+38.4/Rt.	5.8'	13'	13' Rt.	152'	204'
34	8" X 4" Tee	48	B	3	12+03.4/Lt.	8.2'	7'	7' Lt.	87'	268'
35	8" X 4" Tee	49	B	3	12+13.4/Rt.	7.6'	13'	13' Rt.	78'	278'

**POND #4 DATA:**  
 STATIC POOL ELEVATION 1375.0  
 100-YR ELEVATION 1378.2  
 BOTTOM ELEVATION 1365.0

**29: N=1,706,382.91 E=1,687,824.04**  
**30: N=1,706,362.01 E=1,687,724.56**  
**31: N=1,706,381.57 E=1,687,715.07**  
**32: N=1,706,360.09 E=1,687,648.47**  
**33: N=1,706,380.74 E=1,687,638.60**  
**34: N=1,706,359.71 E=1,687,574.26**  
**35: N=1,706,379.53 E=1,687,564.26**



**BAUGHMAN COMPANY**  
 315 Ellis St.  
 Wichita, KS 67211  
 316-262-7271  
 BaughmanCo.com

Brookfield South Addition &  
 Brookfield South 2nd Addition  
 Phase I

**LINE 3 &  
 LINE 3A**

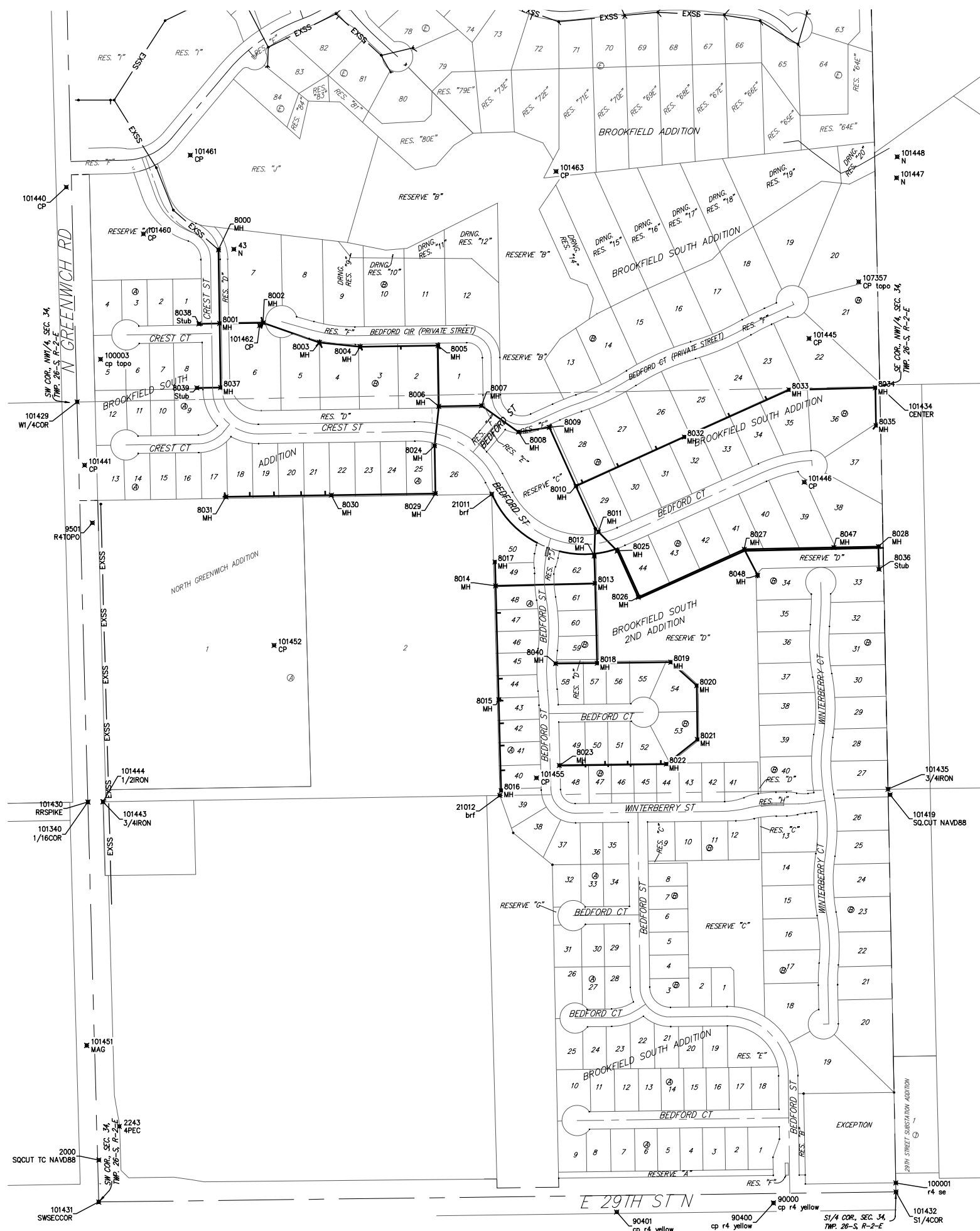
SANITARY SEWER  
 IMPROVEMENTS  
 PROJECT NUMBER:  
 468-2022-012071  
 DESIGN: AEG DRAWN: JAK  
 DATE: Jun. 19, 2023  
 SHEET OF  
**14 28**

File: E:\Projects\Brookfield South 2nd Addition\Engineering\Phase 1\SS\_22-03-E143.dwg

**BENCHMARKS:**  
 RR spike in asphalt, SW Cor.,  
 N1/2, SW1/4, Sec. 34, TWP. 26-S,  
 R-2-E.  
 Elev. = 1400.59 NAVD

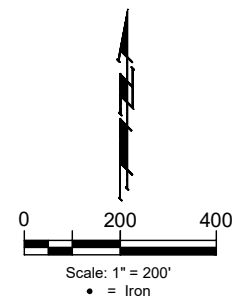
RR spike in E. face of power pole,  
 174± N. of S. line, N1/2, SW1/4  
 & 49± E. of W. line, SW1/4, SEC.  
 34, TWP. 26-S, R-2-E.  
 Elev. = 1398.64 NAVD88

RR spike in S. face of power pole,  
 294± S. of N. line, SW1/4, &  
 48± E. of W. line, SW1/4, SEC. 34,  
 TWP. 26-S, R-2-E.  
 Elev. = 1386.14 NAVD88



CONTROL POINTS			
Point	Northing	Easting	Desc
43	1,708,078.34	1,686,407.30	N
115	1,705,436.89	1,685,919.22	MAG
2000	1,705,056.38	1,685,959.43	SQCUT TC NAVD88
2243	1,705,167.85	1,686,027.16	4PEC
9501	1,707,170.64	1,685,937.87	R4TOPO
21011	1,707,265.96	1,687,262.73	brf
21012	1,706,266.05	1,687,289.70	brf
90000	1,704,913.77	1,688,197.42	cp r4 yellow
90400	1,704,913.77	1,688,197.42	cp r4 yellow
90401	1,704,883.66	1,687,677.42	cp r4 yellow
100001	1,704,980.48	1,688,603.37	r4 se
100003	1,707,713.30	1,685,965.06	cp topo
101340	1,706,244.56	1,685,923.03	1/16COR
101419	1,706,267.93	1,688,585.01	SQCUT NAVD88
101429	1,707,572.07	1,688,886.95	W1/4COR
101430	1,706,244.56	1,685,923.03	RRSPIKE
101431	1,704,917.04	1,685,959.11	SWSECCOR
101432	1,704,950.64	1,688,603.97	S1/4COR
101434	1,707,622.53	1,688,550.20	CENTER
101435	1,706,286.88	1,688,577.45	3/4IRON
101440	1,708,284.39	1,685,850.98	CP
101441	1,707,361.77	1,685,911.99	CP
101443	1,706,245.30	1,685,973.06	3/4IRON
101444	1,706,245.23	1,685,973.10	1/2IRON
101445	1,707,782.11	1,688,315.39	CP
101446	1,707,305.60	1,688,299.42	CP
101447	1,708,315.49	1,688,605.70	N
101448	1,708,385.22	1,688,607.85	N
101451	1,705,436.89	1,685,919.22	MAG
101452	1,706,763.78	1,686,540.29	CP
101455	1,706,323.90	1,687,411.43	CP
101460	1,708,129.47	1,686,106.89	CP
101461	1,708,390.67	1,686,262.73	CP
101462	1,707,825.51	1,686,492.72	CP
101463	1,708,336.93	1,687,476.01	CP
107357	1,707,970.72	1,688,479.93	CP topo

SS POINTS			
Point	Northing	Easting	Desc
8000	1,708,076.97	1,686,356.37	MH
8001	1,707,832.22	1,686,360.27	MH
8002	1,707,834.51	1,686,504.32	MH
8003	1,707,769.14	1,686,690.98	MH
8004	1,707,755.01	1,686,826.22	MH
8005	1,707,759.13	1,687,084.19	MH
8006	1,707,557.15	1,687,087.41	MH
8007	1,707,559.41	1,687,228.90	MH
8008	1,707,472.08	1,687,351.83	MH
8009	1,707,487.54	1,687,454.00	MH
8010	1,707,292.56	1,687,542.18	MH
8011	1,707,140.18	1,687,616.58	MH
8012	1,707,060.49	1,687,603.16	MH
8013	1,706,970.03	1,687,605.63	MH
8014	1,706,961.49	1,687,275.90	MH
8015	1,706,584.63	1,687,286.09	MH
8016	1,706,282.74	1,687,294.25	MH
8017	1,707,040.47	1,687,273.77	MH
8018	1,706,705.19	1,687,612.85	MH
8019	1,706,708.29	1,687,856.69	MH
8020	1,706,630.38	1,687,943.01	MH
8021	1,706,451.90	1,687,945.28	MH
8022	1,706,370.08	1,687,842.28	MH
8023	1,706,365.56	1,687,487.07	MH
8024	1,707,426.36	1,687,073.11	MH
8025	1,707,077.28	1,687,679.06	MH
8026	1,706,923.80	1,687,748.47	MH
8027	1,707,082.96	1,688,100.41	MH
8028	1,707,092.07	1,688,546.07	MH
8029	1,707,267.86	1,687,075.63	MH
8030	1,707,262.42	1,686,730.68	MH
8031	1,707,256.90	1,686,380.72	MH
8032	1,707,455.32	1,687,902.09	MH
8033	1,707,612.16	1,688,248.89	MH
8034	1,707,619.12	1,688,535.29	MH
8035	1,707,493.73	1,688,537.86	MH
8036	1,707,017.09	1,688,547.60	Stub
8037	1,707,619.62	1,686,363.66	MH
8038	1,707,831.12	1,686,291.28	Stub
8039	1,707,618.36	1,686,284.67	Stub
8040	1,706,703.44	1,687,475.13	MH
8047	1,707,089.05	1,688,398.10	MH
8048	1,706,996.76	1,688,144.93	MH



**BAUGHMAN COMPANY**  
 315 Ellis St.  
 Wichita, KS 67211  
 316-262-7271  
 BaughmanCo.com

Brookfield South Addition &  
 Brookfield South 2nd Addition

**COORDINATES**

SANITARY SEWER  
 IMPROVEMENTS  
 PROJECT NUMBER:  
 468-2022-012071  
 DESIGN: AEG DRAWN: JAK  
 DATE: Jun. 19, 2023  
 SHEET OF  
**24 28**

File: C:\Projects\Brookfield South 2nd Addition\Engineering\Phase 1\SS\_22-03-E143.dwg