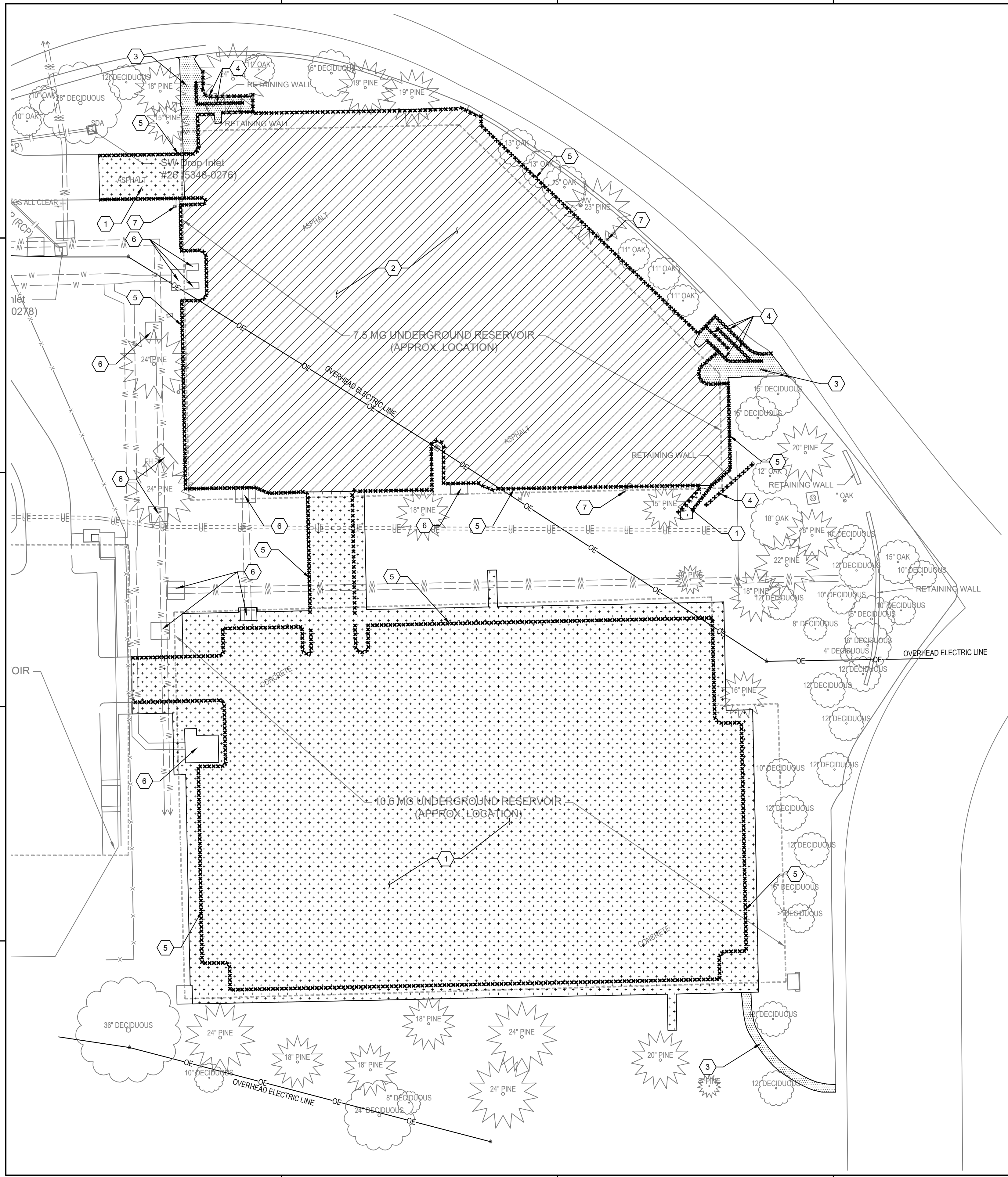

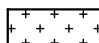
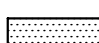

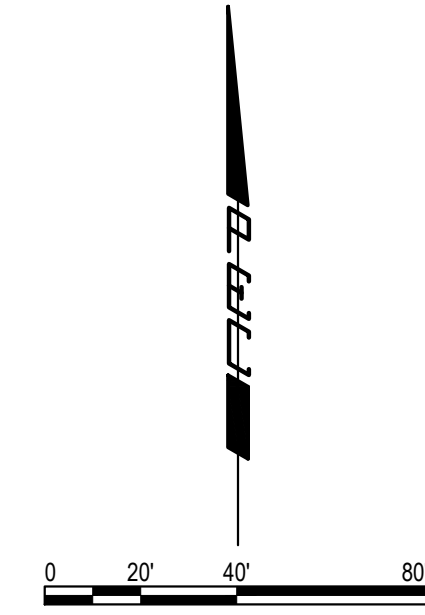


SAVED 4/5/2024 12:39:04 PM BY DUSTIN BILLINGSLEY
 PLOTTED 4/5/2024 1:00:57 PM BY DUSTIN BILLINGSLEY
 U:\WICHITA-CIVIL\2023\237043\142PD3_PLANS\030237043-014 CD101 DEMOLITION PLAN.DWG



DEMOLITION LEGEND

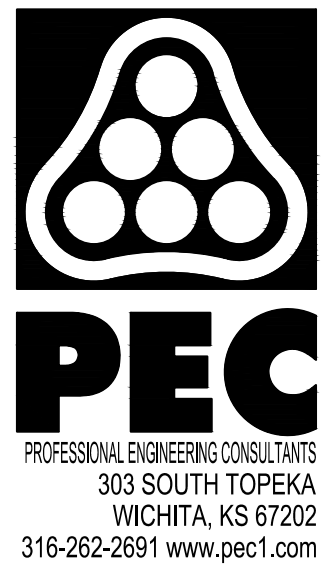
-  DENOTES ASPHALT PAVEMENT REMOVAL
-  DENOTES CONCRETE PAVEMENT REMOVAL
-  DENOTES SIDEWALK REMOVAL
-  DENOTES ITEM DEMOLITION



- # DEMOLITION KEYNOTES**
1. REMOVE EXISTING CONCRETE PAVEMENT AND SUBGRADE MATERIAL, FULL DEPTH, TO LIMITS SHOWN, SUBSIDIARY TO PAVEMENT REMOVAL.
 2. REMOVE EXISTING ASPHALT PAVEMENT, FULL DEPTH, TO LIMITS SHOWN, SUBSIDIARY TO PAVEMENT REMOVAL.
 3. REMOVE EXISTING SIDEWALK PAVEMENT, FULL DEPTH, TO LIMITS SHOWN, SUBSIDIARY TO PAVEMENT REMOVAL.
 4. REMOVE EXISTING RETAINING WALL, SUBSIDIARY TO PAVEMENT REMOVAL.
 5. REMOVE EXISTING CURB & GUTTER, SUBSIDIARY TO PAVEMENT REMOVAL.
 6. PROTECT EXISTING CONCRETE PADS FROM DAMAGE.
 7. EXISTING LIGHT POLE TO REMAIN, PROTECT FROM DAMAGE.

DEMOLITION NOTES:

1. PRIOR TO BID, THE CONTRACTOR SHALL PERFORM A SITE REVIEW AND ACCOUNT FOR ANY DEMOLITION ITEMS THAT MAY HAVE BEEN INADVERTENTLY NOT SHOWN ON THIS DRAWING. ALL DEMOLITION IS SUBSIDIARY TO THE PROJECT.
2. THE CONTRACTOR IS RESPONSIBLE FOR ALL COSTS TO REPAIR DAMAGE TO EXISTING UTILITY SERVICE LINES OR MAIN LINES, BUILDINGS, PAVEMENT ON OR ADJACENT TO THE SITE THAT ARE TO REMAIN IN SERVICE AND ARE NOT CALLED TO BE DEMOLISHED ON THIS PLAN, INCLUDING SERVICE LINES THAT ARE NOT SHOWN ON THE SITE SURVEY.
3. THE CONTRACTOR IS RESPONSIBLE FOR DEMOLITION PERMIT FEES, DISPOSAL FEES, ANY OTHER FEES ASSOCIATED WITH ANY DEMOLITION ITEMS.
4. REFERENCE G-101 FOR CIVIL GENERAL NOTES.
5. SURVEY DOES NOT INCLUDE UNDERGROUND STRUCTURES OR FOUNDATIONS FROM PREVIOUS SITE CONSTRUCTION.
6. IF CONTAMINATED MATERIAL IS ENCOUNTERED, THE CONTRACTOR SHALL NOTIFY KDHE AND FOLLOW THE PROCEDURES FOR HANDLING AND DISPOSAL OF THE CONTAMINATED MATERIALS.
7. CONTRACTOR SHALL BE RESPONSIBLE FOR HAUL-OFF AND DISPOSAL OF ALL PAVEMENT MATERIAL, BRICK, AND BASE ROCK. ANY CLEAN SOIL CAN BE STOCKPILED AND RE-USED AS BACKFILL MATERIAL. THE CONTRACTOR SHALL NOT STOCKPILE SOIL ON TOP OF THE RESERVOIRS. CONTRACTOR SHALL COORDINATE STOCK PILE LOCATIONS WITH THE CITY.
8. ALL EXISTING UTILITIES, INCLUDING LIGHT POLES, ARE TO REMAIN. CONTRACTOR SHALL PROTECT ALL UTILITIES FROM DAMAGE.



**COW HESS RESERVOIR
 PARKING LOT REMOVAL**
 1401 MUSEUM BLVD.
 WICHITA KS, 67203

Issue:	

JOB NO.	237043-014
DATE	APRIL 5, 2024
PM	TBK
DESIGNED BY	DSB
DRAWN BY	CSS
CHECKED BY	DRC

DEMOLITION PLAN
CD101