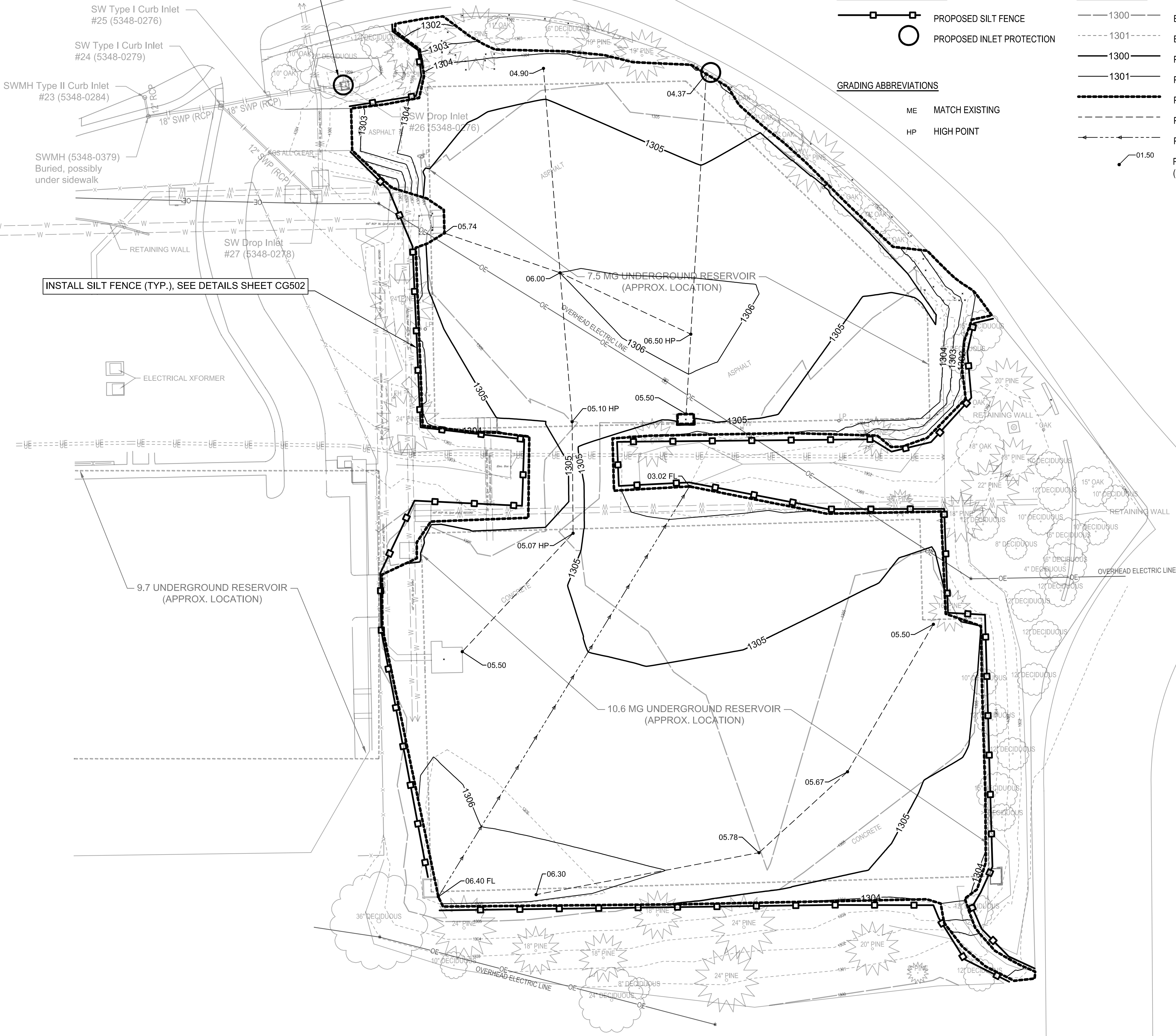


SAVED 4/5/2024 12:38:59 PM BY DUSTIN BILLINGSLEY
 PLOTTED 4/5/2024 1:01:04 PM BY DUSTIN BILLINGSLEY
 U:\WICHITA-CIVIL\2023\2370430\142PD3_PLAN\CG101 GRADING PLAN.DWG

INSTALL INLET PROTECTION (TYP.), SEE DETAILS SHEET CG502.



EROSION CONTROL LEGEND

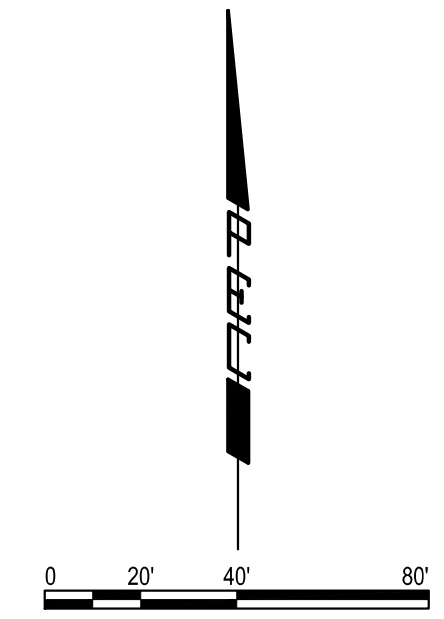
- PROPOSED SILT FENCE
- PROPOSED INLET PROTECTION

GRADING ABBREVIATIONS

- ME MATCH EXISTING
- HP HIGH POINT

GRADING LEGEND

- 1300 — EXISTING MAJOR CONTOUR
- - - 1301 - - - EXISTING MINOR CONTOUR
- 1300 — PROPOSED MAJOR CONTOUR
- - - 1301 - - - PROPOSED MINOR CONTOUR
- — — PROPOSED GRADING LIMITS
- - - PROPOSED RIDGE LINE
- — — PROPOSED DITCH CENTER LINE
- 01.50 ○ PROPOSED SPOT ELEVATION (+ 1300 = NAVD88 ELEVATION)



SITE GRADING NOTES

- ALL FILL MATERIAL BLADED SMOOTH AND SLOPED TO DRAIN.
- CADD FILES FOR GRADING WILL BE MADE AVAILABLE UPON REQUEST.
- THE CONTRACTOR SHALL SATISFY THEMSELVES WITH THE EARTHWORK QUANTITIES AND NO CHANGE ORDER FOR EARTHWORK WILL BE APPROVED.
- THE TOP 6" OF ALL AREAS TO BE SEEDDED SHALL RECEIVE TOPSOIL MATERIAL SUITABLE FOR GROWTH OF VEGETATION. OVEREXCAVATE 6" THRU AREAS OF CUT FOR PLACEMENT OF TOPSOIL. NO ADDITIONAL PAYMENT SHALL BE MADE FOR DOUBLE-HANDLING OF STOCKPILING.
- ALL DISTURBED AREAS SHALL BE SEEDDED IN ACCORDANCE WITH CITY OF WICHITA STANDARD SPECIFICATIONS.

EROSION CONTROL NOTES

- CONTRACTOR SHALL INSTALL AND MAINTAIN EROSION PROTECTION THROUGHOUT THE ENTIRE PROJECT. EROSION PROTECTION SHALL BE INCLUDED IN THE BID AS FOLLOWS:
 - BMP, CONSTRUCTION ENTRANCE = 1 EA.
 - BMP, INLET PROTECTION = 2 EA.
 - BMP, SILT FENCE = 2,279 LF.
- THE EROSION CONTROL DEVICES SHOWN ON THIS SHEET ARE CONSIDERED MINIMUM STANDARDS. WHENEVER SEDIMENT ENTERS THE STREETS, STORM SEWERS, DITCHES, OR PONDS, CONTRACTOR WILL INSTALL ADDITIONAL DEVICES, AS NEEDED, TO CORRECT THE PROBLEM.
- THE EROSION CONTROL DEVICES SHOWN HEREON MUST BE IN PLACE AT ALL TIMES DURING CONSTRUCTION UNTIL SUCH TIME AS THE SITE IS REESTABLISHED WITH PAVING OR GRASS. TEMPORARY OR PERMANENT SEEDING AND MULCH WILL BE INSTALLED WHEN EARTHWORK ACTIVITIES CEASE IN AN AREA FOR 14 DAYS OR MORE.
- ANY MUD INADVERTENTLY TRACKED ONTO ANY STREET SHALL BE CLEANED UP BY THE CONTRACTOR, AT THE END OF EACH DAY'S WORK, OR AS DIRECTED BY THE FIELD ENGINEER.
- CONTRACTOR TO FURNISH A TRUCK WASH-OUT PIT TO BE PLACED AT A CONVENIENT LOCATION THAT DOES NOT CONFLICT WITH CONSTRUCTION. CONTRACTOR SHALL CLEAN OUT AND BACKFILL PIT PRIOR TO FINAL INSPECTION. LOCATION SHALL BE APPROVED BY THE FIELD ENGINEER.

TANK ROOF MEMBRANE SYSTEM

- FOLLOWING DEMOLITION, THE CONTRACTOR SHALL EXPOSE THE RESERVOIR TOPS AND INSTALL A TANK ROOF MEMBRANE SYSTEM ON BOTH RESERVOIRS. REFERENCE THE PROJECT SUPPLEMENTAL PROVISIONS.
- CONTRACTOR SHALL BACKFILL AND GRADE ON TOP OF THE RESERVOIRS AFTER THE MEMBRANE SYSTEM HAS BEEN APPLIED AND CURED PER MANUFACTURER RECOMMENDATIONS.



**COW HESS RESERVOIR
 PARKING LOT REMOVAL**
 1401 MUSEUM BLVD.
 WICHITA KS, 67203

| | |
|-------------|---------------|
| Issue: | |
| | |
| | |
| | |
| | |
| | |
| | |
| | |
| | |
| JOB NO. | 237043-014 |
| DATE | APRIL 5, 2024 |
| PM | TBK |
| DESIGNED BY | DSB |
| DRAWN BY | CSS |
| CHECKED BY | DRC |

GRADING PLAN
CG101