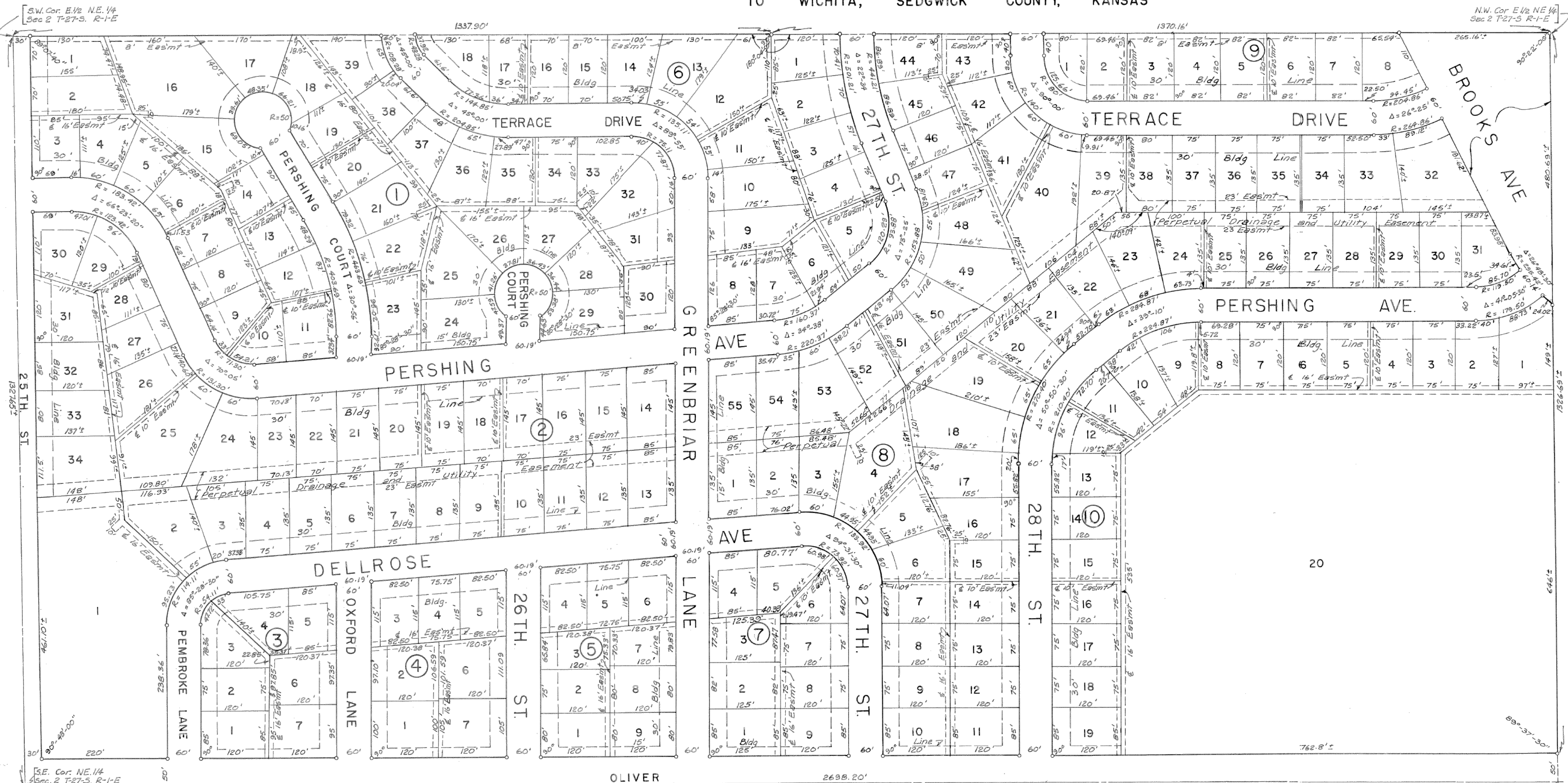


GREENBRIAR MANOR

AN ADDITION
TO WICHITA, SEDGWICK COUNTY, KANSAS

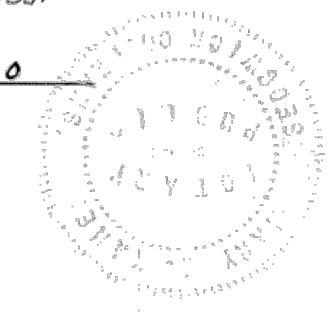


I Vera Mae Clark holder of a mortgage on the above described property do hereby consent to the platting of "GREENBRIAR MANOR" an addition to Wichita, Sedgwick County, Kansas.

Vera Mae Clark

State of Kansas) ss. Be it remembered that on this day of 1959 before me a notary public in aforesaid county and state came Vera Mae Clark to me known as the same person who executed the foregoing instrument of writing and duly acknowledged the execution of the same as their voluntary act and deed. In testimony whereof I have hereunto set my hand and affixed my notarial seal the day and year above written.

My Commission Expires June 6, 1960
Mary E. Kane Notary Public



SCALE 1" = 100'
O = Irons.

State of Kansas) ss. I Guy S. Guthrie Civil Engineer in aforesaid county and state do hereby certify that I have surveyed and platted "GREENBRIAR MANOR" addition to Wichita, Sedgwick County, Kansas and that accompanying plat is a true and correct exhibit of the property surveyed described as follows: East 1/2 of NE 1/4 Sec. 2 T-27-S, R-1-E, of the 6th PM. Sedgwick County, Kansas.

Guy S. Guthrie Civil Engineer

Know all men by these presents that we Lawrence Inc. a corporation by Robert J. Lawrence, President, and Frances I. Lawrence, Secretary have caused the land described in the surveyors certificate to be platted into lots, blocks, streets, lanes, avenue, drive & courts to be known as "GREENBRIAR MANOR" addition to Wichita Sedgwick County, Kansas. Easements are hereby granted as indicated for the construction and maintenance of all public utilities. The streets, lanes, avenues and courts are hereby dedicated to and for the use of the public. The Drainage Dedication as indicated on this plat is hereby dedicated to and for the public. Easements are hereby granted for drainage as indicated.

Robert J. Lawrence President Frances I. Lawrence Secretary

State of Kansas) ss. Be it remembered that on this 15th day of December 1959, before me a notary public in aforesaid county and state came Lawrence Inc. a corporation by Robert J. Lawrence, President and Frances I. Lawrence, Secretary, to be known to be the same persons who executed the foregoing instrument of writing and duly acknowledged the execution of the same as their voluntary act and deed and as the act and deed of said corporation in testimony whereof I have hereunto set my hand and affixed my notarial seal the day and year above written.

My commission expires June 6, 1960
Mary E. Kane Notary Public

This plat of "GREENBRIAR MANOR" addition to Wichita, Sedgwick County, Kansas has been submitted to and considered by The Wichita Sedgwick County Metropolitan Area Planning Commission and is hereby transmitted to the Board of Commissioners with the recommendation that such Plat be approved, as proposed. Dated this 7th day of JANUARY 1960

The Wichita-Sedgwick County Metropolitan Area Planning Commission.
Robert E. Coors Chairman John D. Witte Secretary

Approved by the Board of City Commissioners this 2nd day of February 1960

Justus B. Bugate Mayor
Ed Frank City Clerk

Approved by the Board of County Commissioners this 8th day of February 1960

Entered on transfer record this 8th day of February 1960
W. O. Williams County Clerk
W. O. Williams County Clerk

State of Kansas) ss. This is to certify that this plat was filed for record in the office of Register of Deeds this 8th day of Feb 1960 at 1:45 o'clock and is duly recorded

Refus E. Dreier # 2916
Register of Deeds

Restr. Cov. M 546 pg 291
Restr. Cov. M 558 Pg. 437
Restr. Cov. M 508 p. 265

A4-19