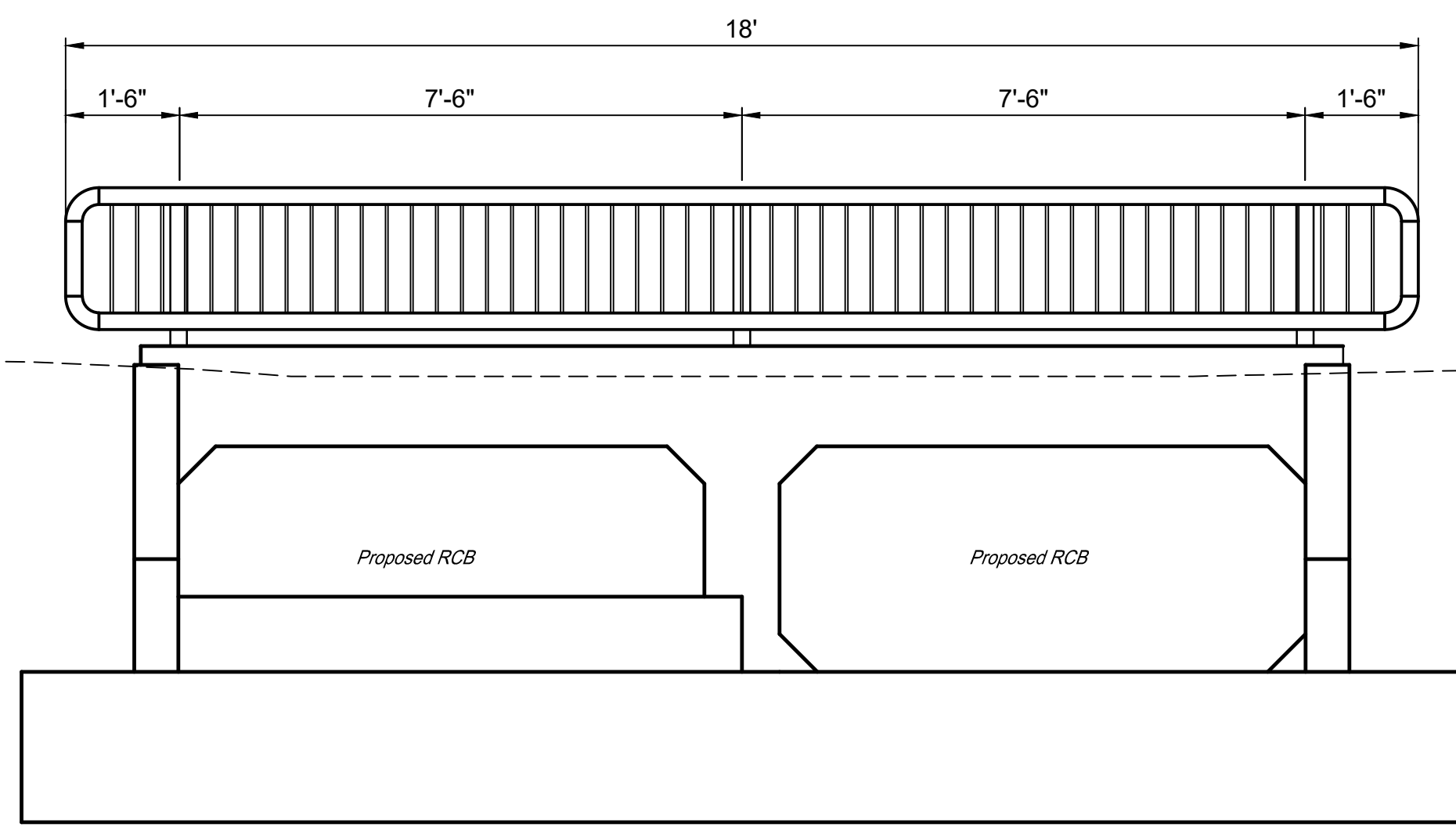




© 2024 GARVER, LLC  
THIS DOCUMENT, ALONG WITH THE IDEAS AND DESIGNS CONVEYED HEREIN, SHALL BE CONSIDERED INSTRUMENTS OF PROFESSIONAL SERVICE AND ARE PROPERTY OF GARVER, LLC. ANY USE, REPRODUCTION, OR DISTRIBUTION OF THIS DOCUMENT, ALONG WITH THE IDEAS AND DESIGN CONTAINED HEREIN, IS PROHIBITED UNLESS AUTHORIZED IN WRITING BY GARVER, LLC OR EXPLICITLY ALLOWED IN THE GOVERNING PROFESSIONAL SERVICES AGREEMENT FOR THIS WORK.

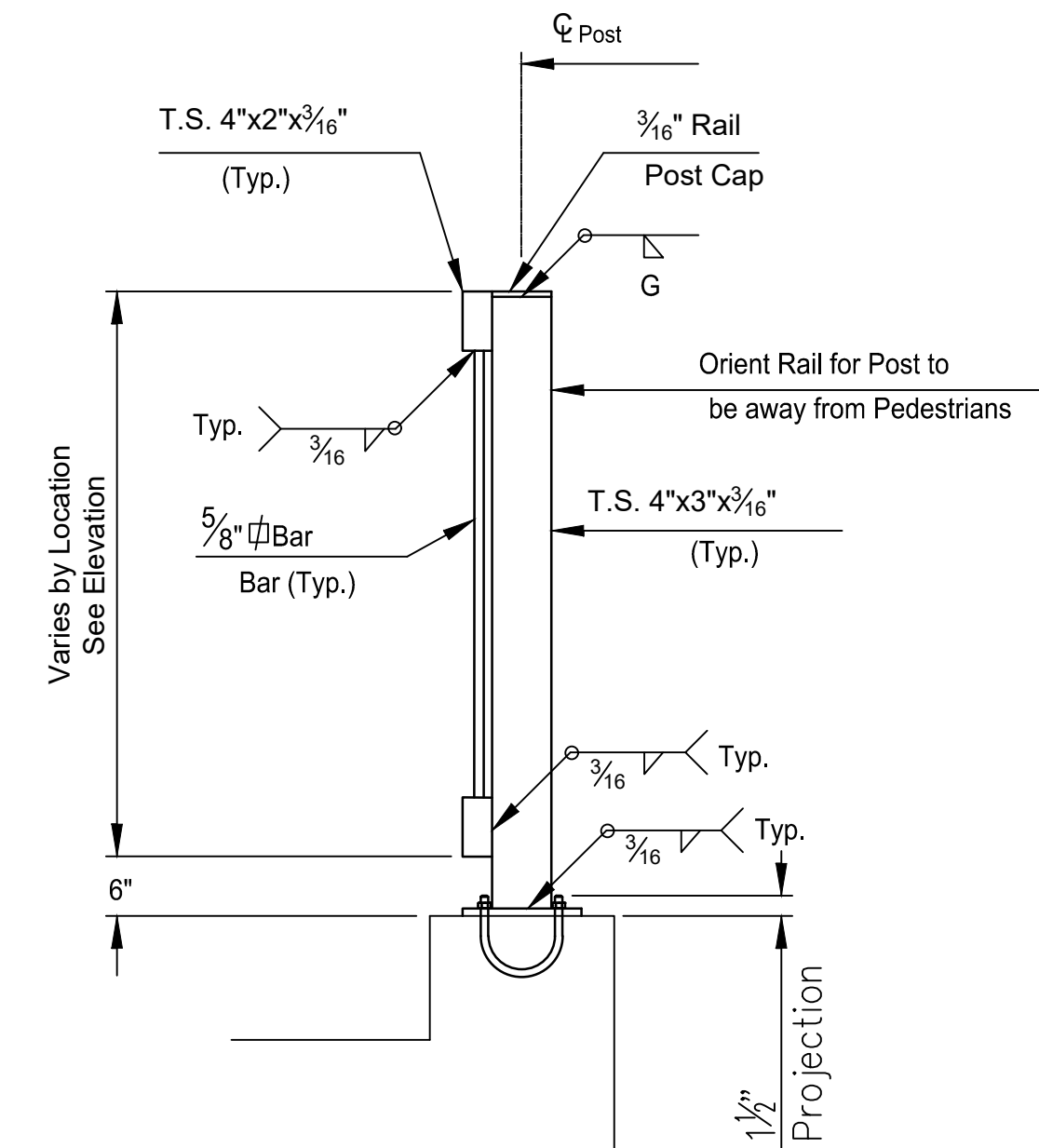
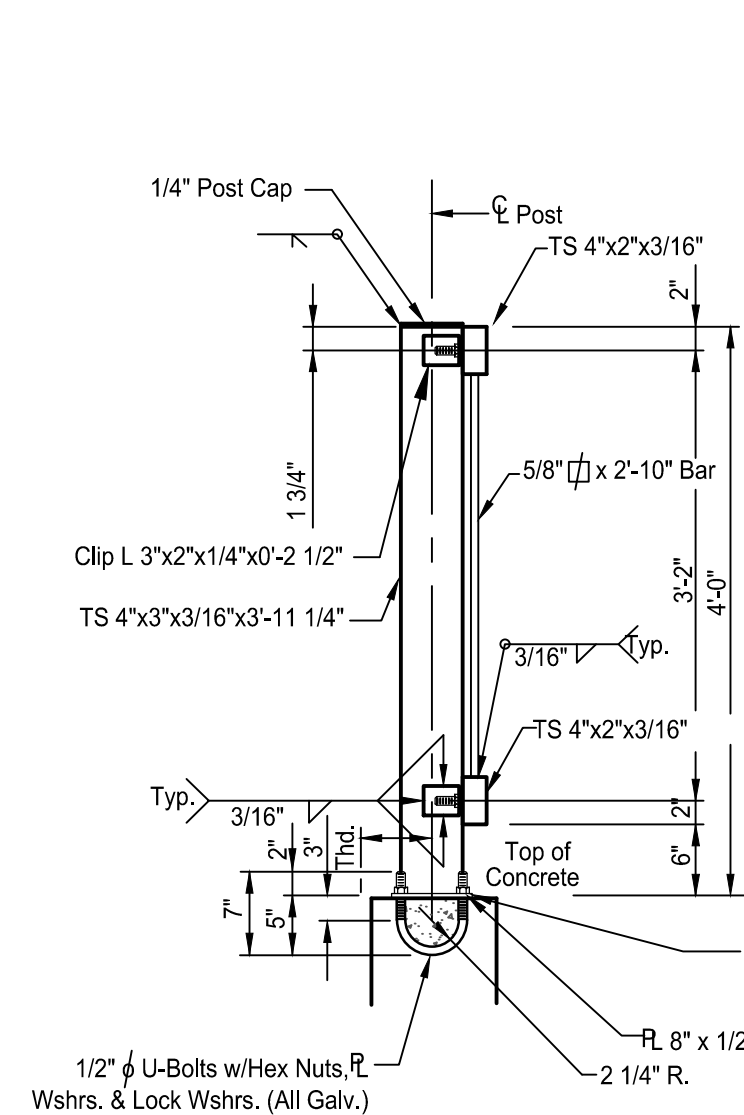
1995 Midfield Road  
Wichita, Kansas 67209



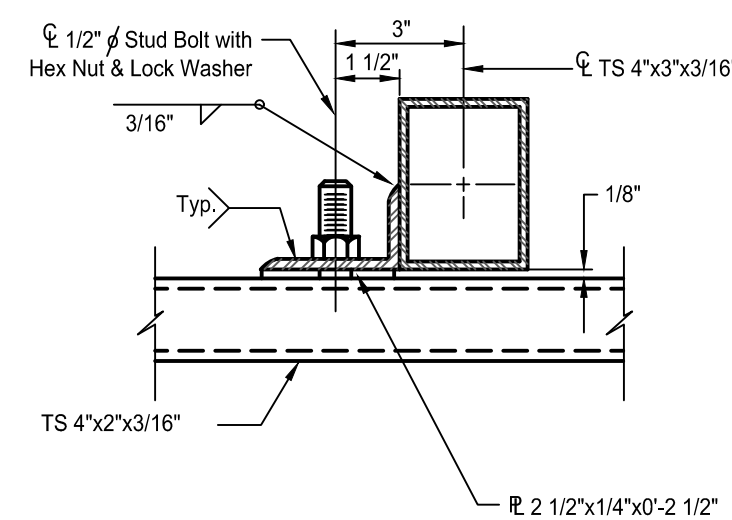
**GREENBRIAR**

**BRIDGE HANDRAIL NOTES:**

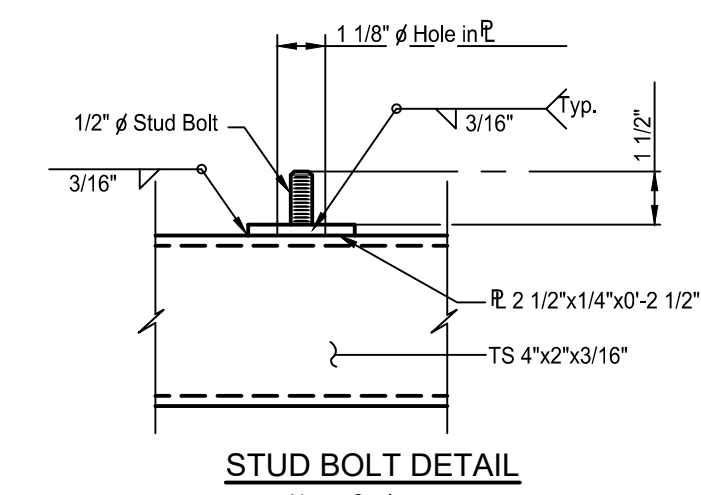
- The rail members shall conform to ASTM Designation A36.
- Rail shall be fabricated in lengths to include a minimum of two and a maximum of three panels. Posts shall be set vertical. Shims may be used between concrete and base plates of posts.
- All parts of Bridge Handrail shall be painted Black. Shop and field coats shall conform to organic or inorganic Zinc for primer or equivalent, and "High-Build Polyurethane Finish Coat" at the Standard Specifications for State Road and Bridge Construction, 1990 Edition, Kansas Department of Transportation.
- All materials, equipment and labor necessary for the installation of the Handrail on the bridge shall be subsidiary to the bid item for "Handrail".
- Handrail shall be approved by Engineer prior to painting.
- Contractor to submit color chart to Engineer for approval. Touch Up: All bolts, nuts and studs and other small areas of damaged paint (10 S.F. or less) requiring touch up will be prepared and painted w/approved aluminum epoxy mastic primer.



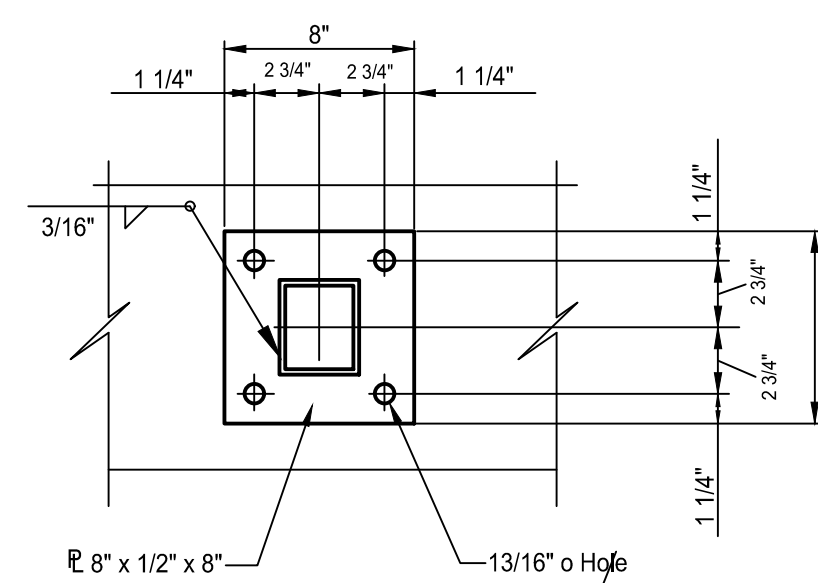
**TYPICAL HUBGUARD POST**  
Not to Scale



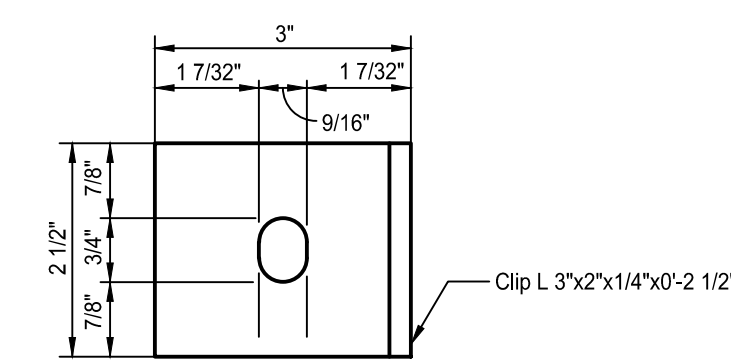
**RAIL CONNECTION DETAIL**  
Not to Scale



**STUD BOLT DETAIL**  
Not to Scale



**BASE PLATE DETAIL**  
Not to Scale



**CLIP DETAIL**  
Not to Scale

REV.	DATE	DESCRIPTION	BY



CITY OF WICHITA  
KANSAS  
GREENBRIAR BOX  
REPLACEMENT

**Handrail Details**

JOB NO.: 2302463  
DATE: FEB 2024  
DESIGNED BY: KWL  
DRAWN BY: DRS

BAR IS ONE INCH ON ORIGINAL DRAWING  
IF NOT ONE INCH ON THIS SHEET, ADJUST SCALES ACCORDINGLY.

DRAWING NUMBER