



© 2024 GARVER, LLC  
THIS DOCUMENT, ALONG WITH THE IDEAS AND DESIGNS CONVEYED HEREIN, SHALL BE CONSIDERED INSTRUMENTS OF PROFESSIONAL SERVICE AND ARE PROPERTY OF GARVER, LLC. ANY USE, REPRODUCTION, OR DISTRIBUTION OF THIS DOCUMENT, ALONG WITH THE IDEAS AND DESIGN CONTAINED HEREIN, IS PROHIBITED UNLESS AUTHORIZED IN WRITING BY GARVER, LLC OR EXPLICITLY ALLOWED IN THE GOVERNING PROFESSIONAL SERVICES AGREEMENT FOR THIS WORK.

1995 Midfield Road  
Wichita, Kansas 67209



BY	DESCRIPTION	DATE	REV.

BY	DESCRIPTION	DATE	REV.



CITY OF WICHITA  
KANSAS  
GREENBRIAR BOX REPLACEMENT

Pavement Details

JOB NO.: 19T41013  
DATE: JUNE 2019  
DESIGNED BY: KWL  
DRAWN BY: KWL

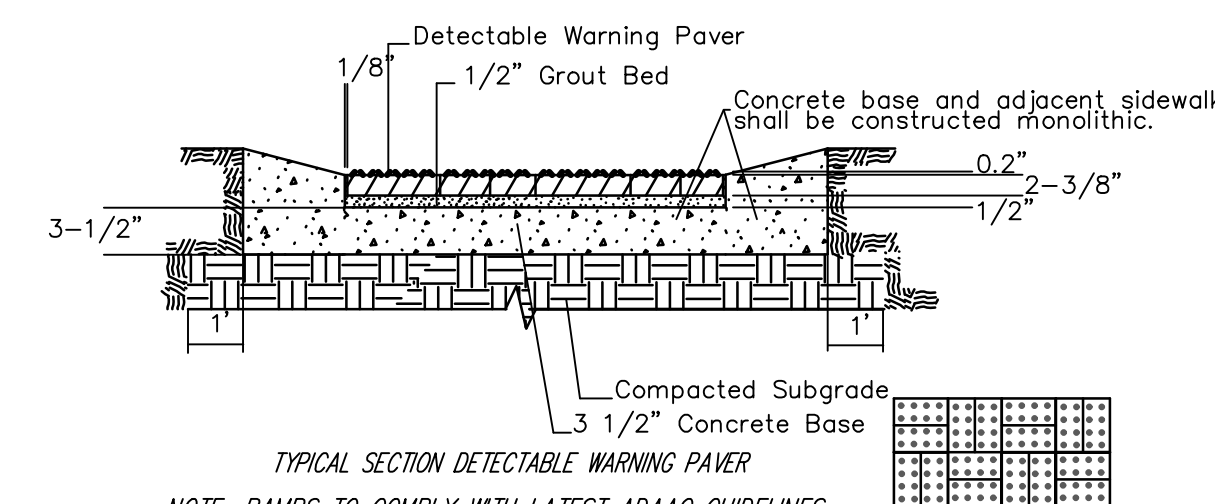
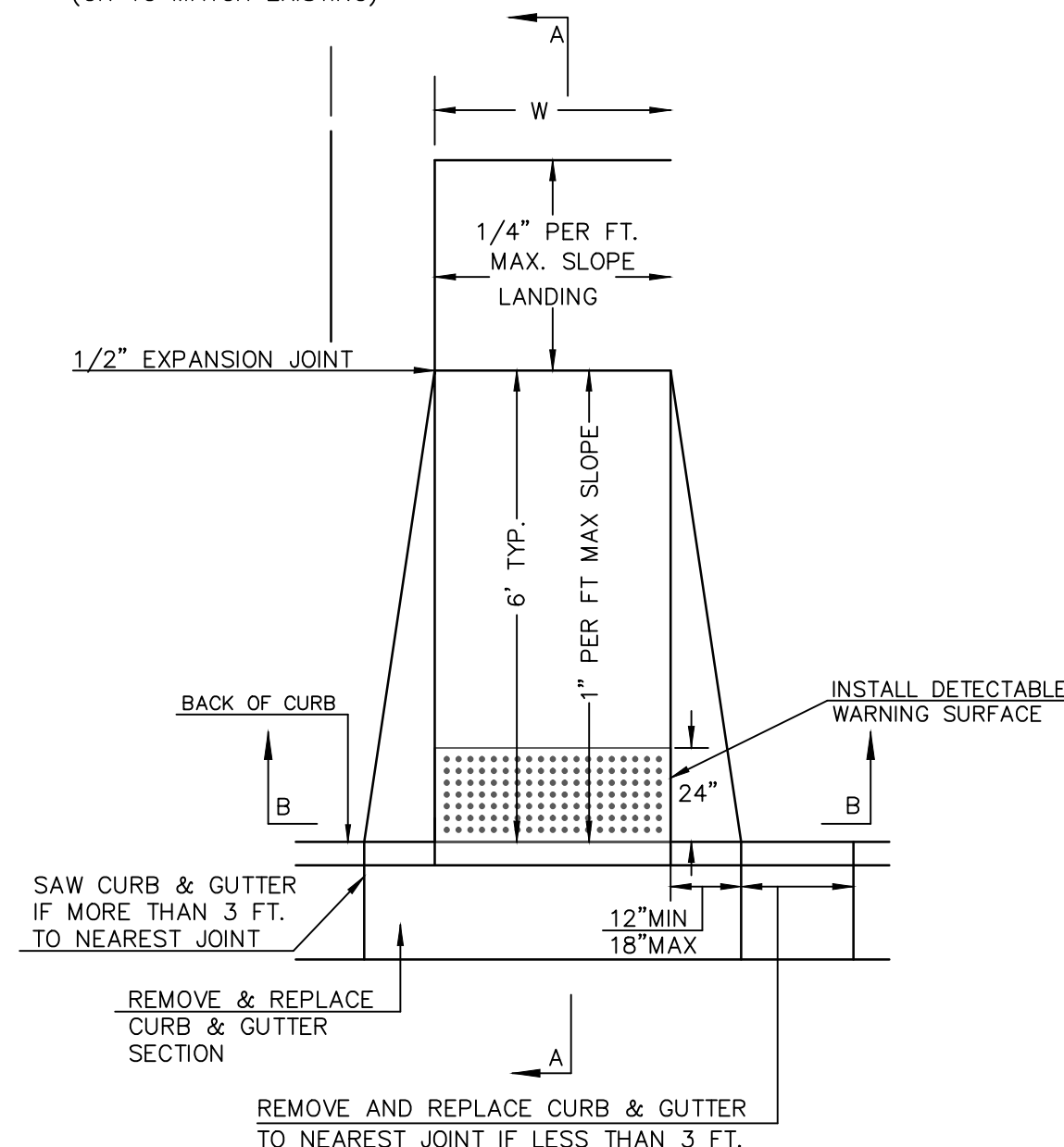
BAR IS ONE INCH ON ORIGINAL DRAWING  
IF NOT ONE INCH ON THIS SHEET, ADJUST SCALES ACCORDINGLY.

DRAWING NUMBER

SHEET NUMBER **8** OF **10**

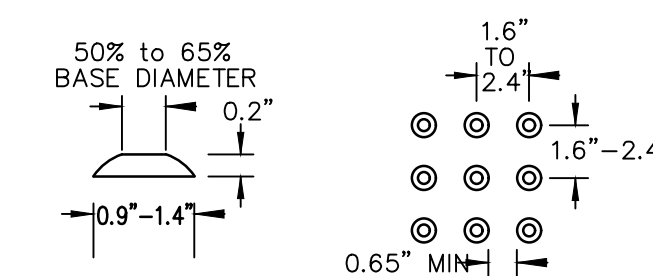
(TYPE A)  
STANDARD WHEELCHAIR RAMP  
WITH DETECTABLE WARNING  
CONSTRUCTION DETAIL FOR STREETS  
WITH COMBINED CURB & GUTTER

W = 4'0" FOR STANDARD RAMP  
W = 5'0" FOR RAMPS AT SCHOOL CROSSWALKS  
(OR TO MATCH EXISTING)

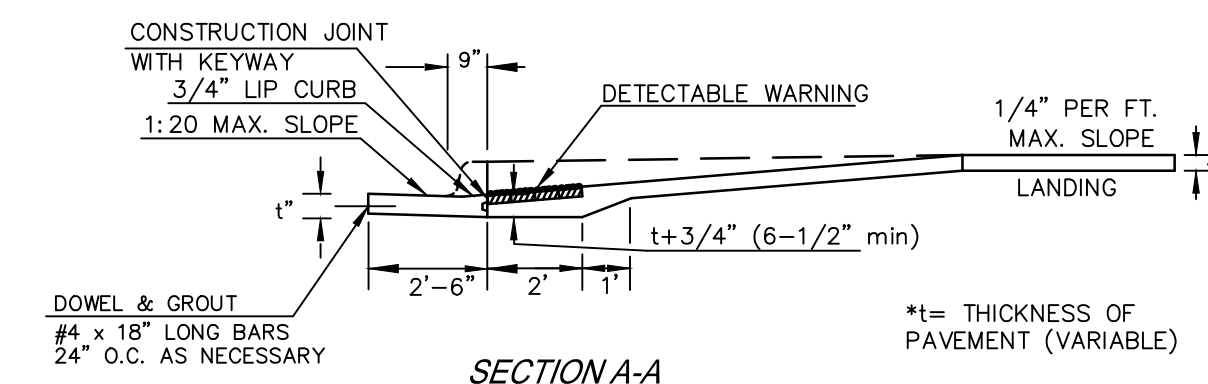


NOTE: RAMPS TO COMPLY WITH LATEST ADAAG GUIDELINES. PAVESTONE DETECTABLE WARNING PAVERS (OR AN APPROVED EQUAL) SHALL BE USED IN ALL WHEELCHAIR RAMPS. THE RED PAVES SHALL BE INSTALLED USING A BASKET WEAVE/PARQUET PATTERN. OTHER PATTERNS MAY BE USED WITH APPROVAL OF AN ENGINEER. SAND FILL JOINTS. ALIGN DOMES IN THE DIRECTION OF PEDESTRIAN TRAVEL.

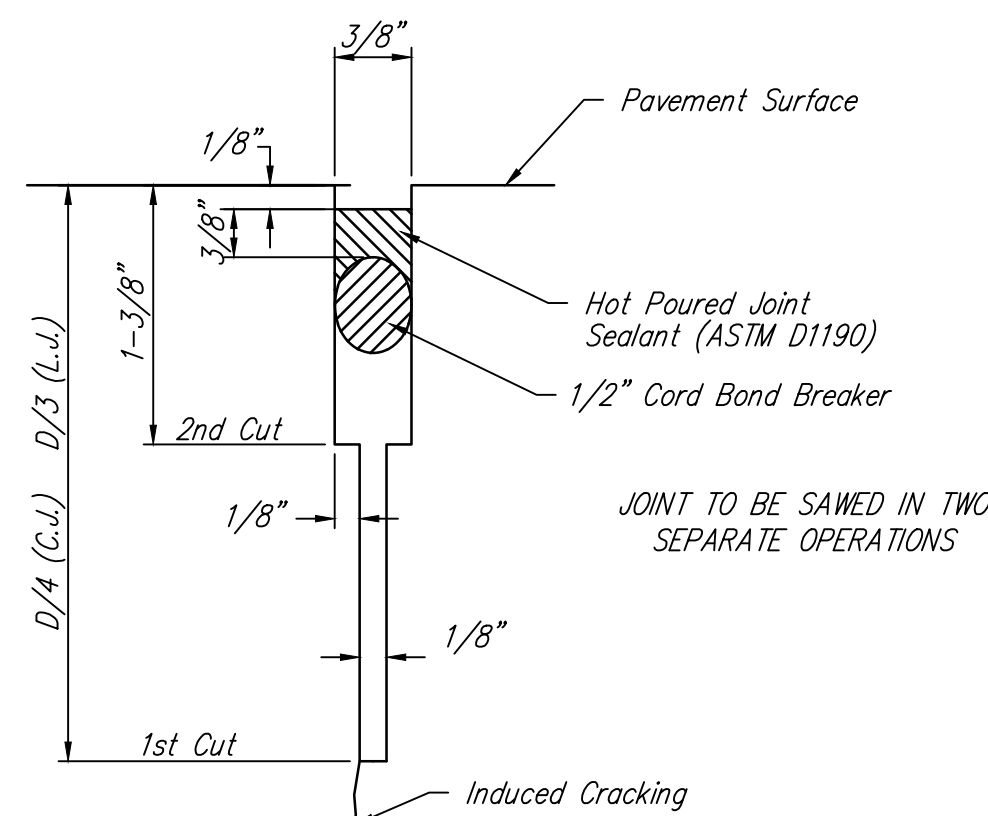
SECTION B-B



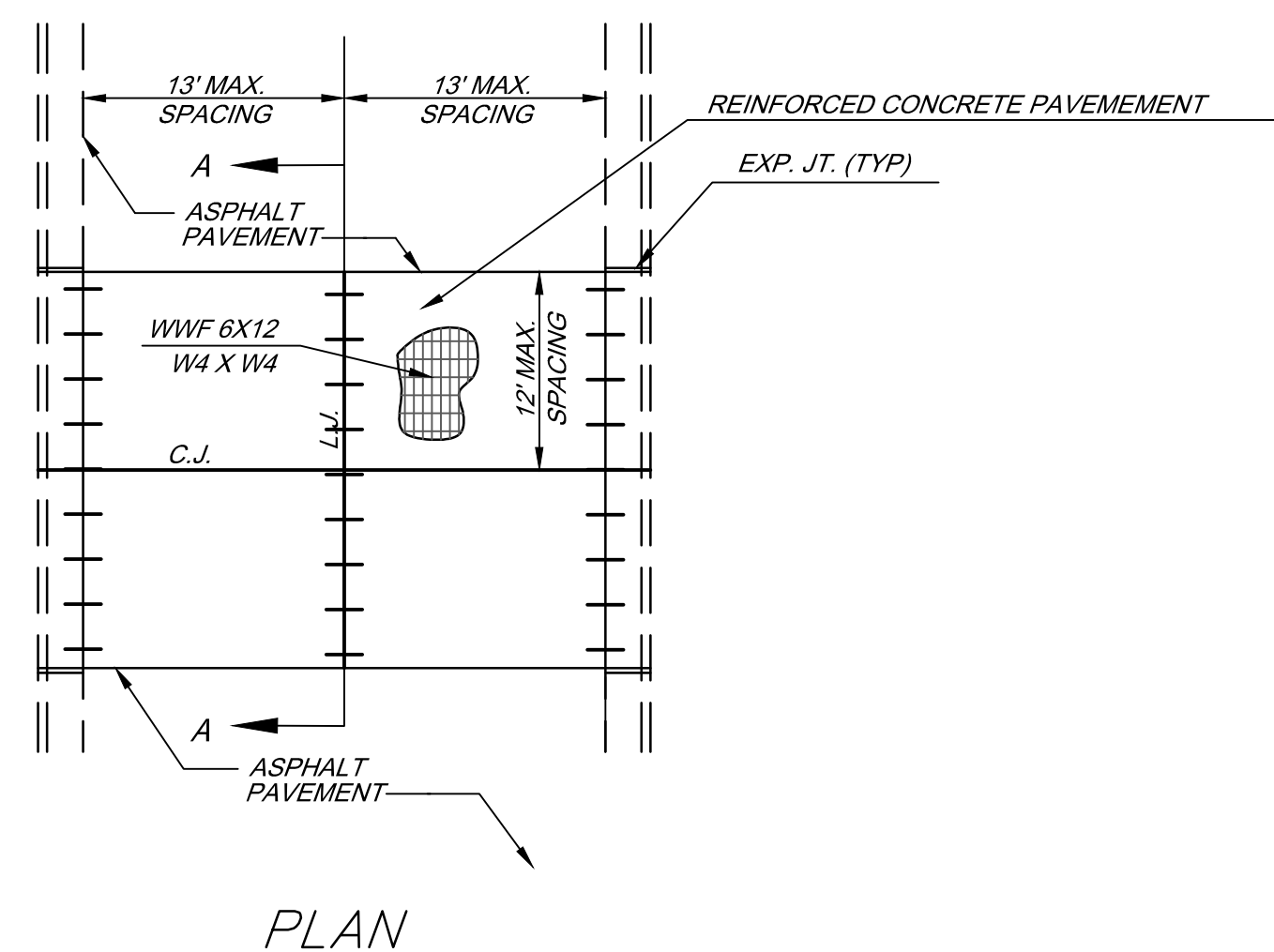
SECTION A-A



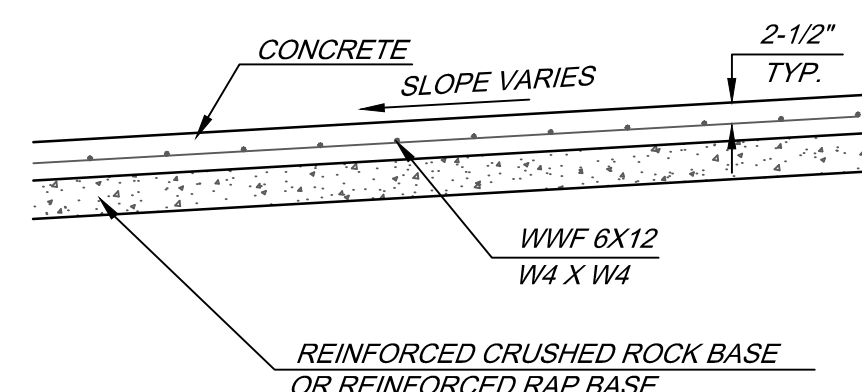
\*t = THICKNESS OF PAVEMENT (VARIABLE)



SAW JOINT DETAIL

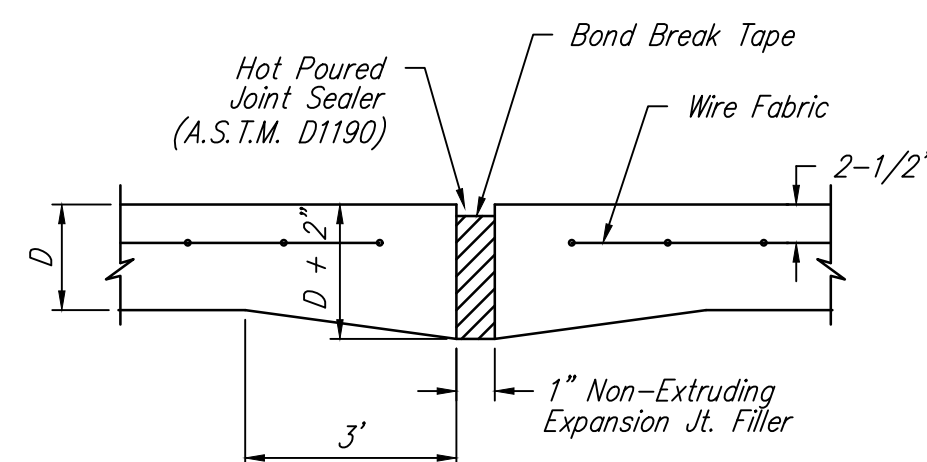


PLAN



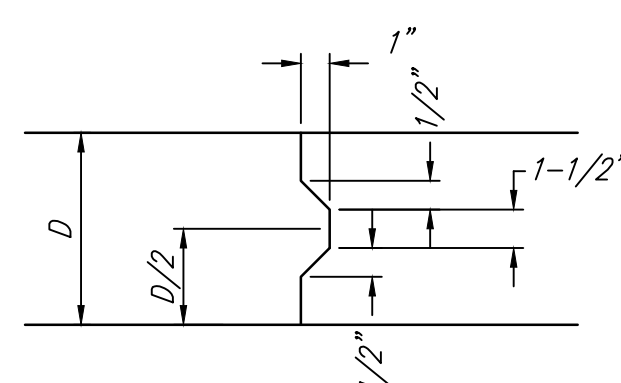
SECTION A-A

6" x 12" W4XW4 WIRE FABRIC REINFORCING SHALL BE PLACED SUCH THAT THE WIRES WITH THE 6" SPACING WILL RUN PARALLEL WITH THE LONGITUDINAL JOINT.

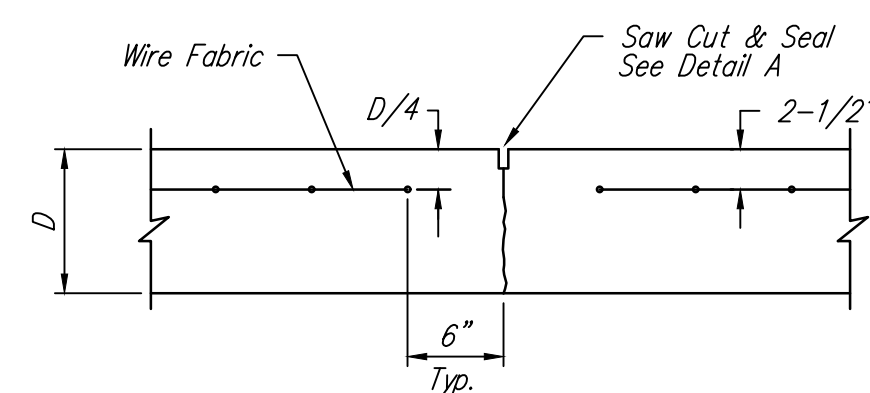


EXPANSION JOINT

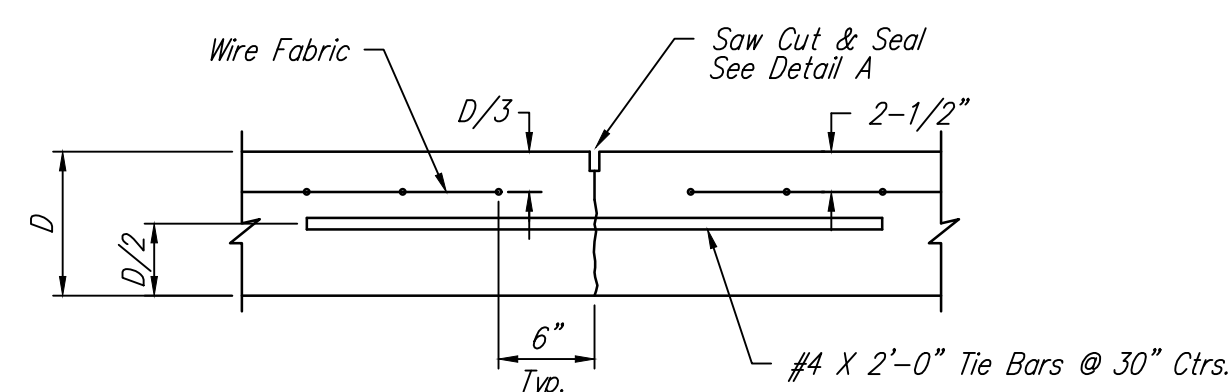
NOTE: Extra Thickness to be Subsidiary to Price of Square Yards Pavement



KEYWAY DETAIL



CONTRACTION JOINT DETAIL (C.J.)



LONGITUDINAL JOINT DETAIL (L.J.)

File: L:\2023\141-2302463 - Greenbriar Box\Drawings\DESIGN\3886D Greenbriar Engineering Base.dwg, Last Save: 3/29/2024 9:26 AM, Last saved by: KWL/lee  
Last plotted by: Lee, Ken W., Plot Style: ---, Plot Scale: 3/29/2024 11:33 AM, Plotted using: None