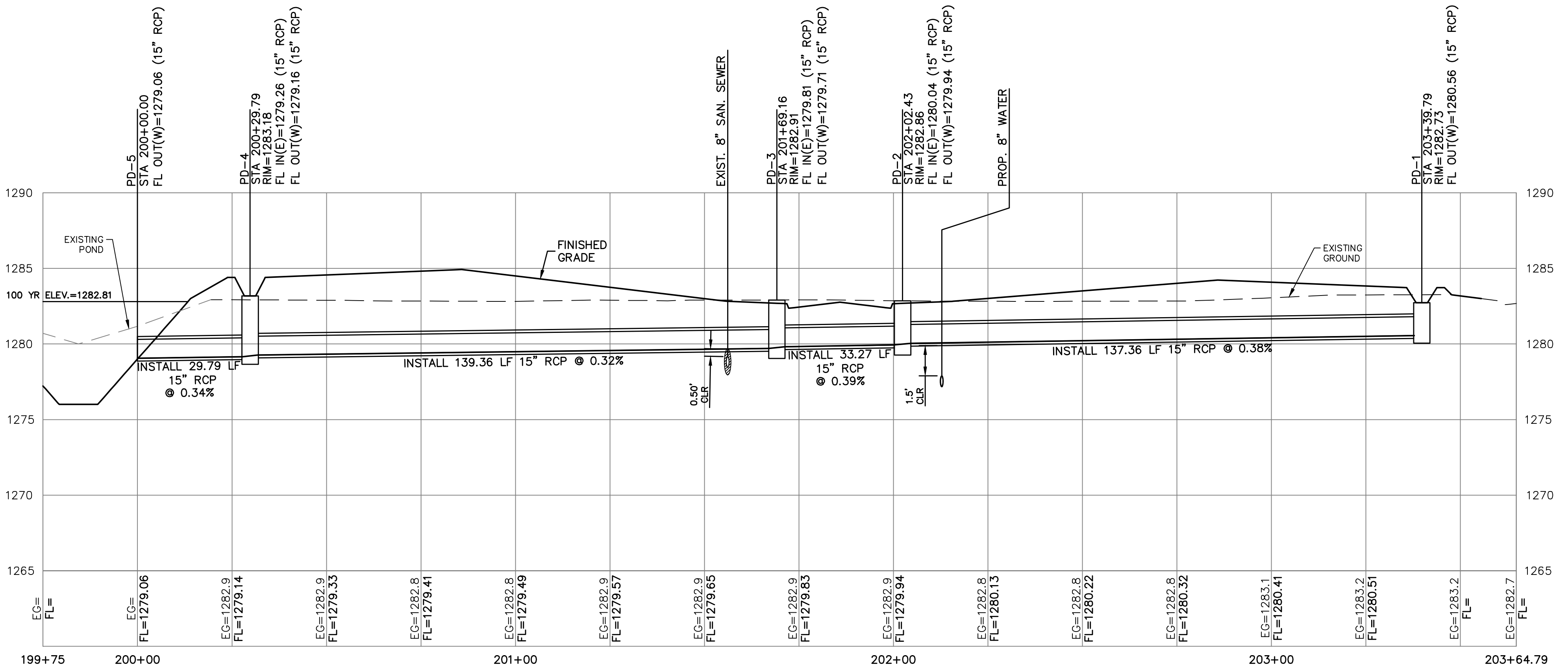


NOTES:
1. PIPE LENGTHS ARE CENTER TO CENTER OF STRUCTURE OR TO END OF END SECTIONS.

▲ SPECIFIED SIZE OF BACKYARD INLET.



STORM SEWER LINE "A"

NOTE:
ALL OFFSITE DESIGN INFO SHALL BE CONSIDERED AUGMENTARY IN NATURE AND MAINTENANCE AS DIRECTED BY CITY OF WICHITA. SEE CITY OF WICHITA PLANS PROJECT NUMBER 0435PPD (607861) DATED DECEMBER 2016 FOR ALL DESIGN INFO INCLUDING POND GRADING, PUMP SPECIFICATIONS, AND PIPE INVERT DATA.

PROJ. NO.	G21D1997
DESIGNER	SMM
CFN	TDA
SHEET	1997DPP
REV	03
REV	1

REV	DATE	DESCRIPTION
B	04/16/24	RFI & CITY COMMENTS
O	03/01/24	BIDDING

MAC MERIDIAN ADDITION
WEST MACARTHUR ROAD
WICHITA, KANSAS 67217

STORM SEWER IMPROVEMENTS
STORM SEWER LINE - PLAN & PROFILE

PROF. NO. G21D1997
DESIGNER SMM
CFN TDA
SHEET 1997DPP
REV 03

9139 E. 37TH STREET, NORTH
WICHITA, KANSAS 67226
PH. (316) 440-4304
www.kveing.com | www.kveing.com

KAW VALLEY ENGINEERING

KAW VALLEY ENGINEERING, INC., IS AUTHORIZED TO OFFER ENGINEERING SERVICES BY KANSAS STATE CERTIFICATE OF AUTHORIZATION # E-113. EXPIRES 12/31/24

SUNDIATA MARCELIN
ENGINEER
KS # 29546

SUNDIATA MARCELIN
LICENSED PROFESSIONAL ENGINEER
29546
KANSAS