

**BENCHMARK'S**

Cross on South West Corner of Lot 25 Block H, The Fairmont Addition.

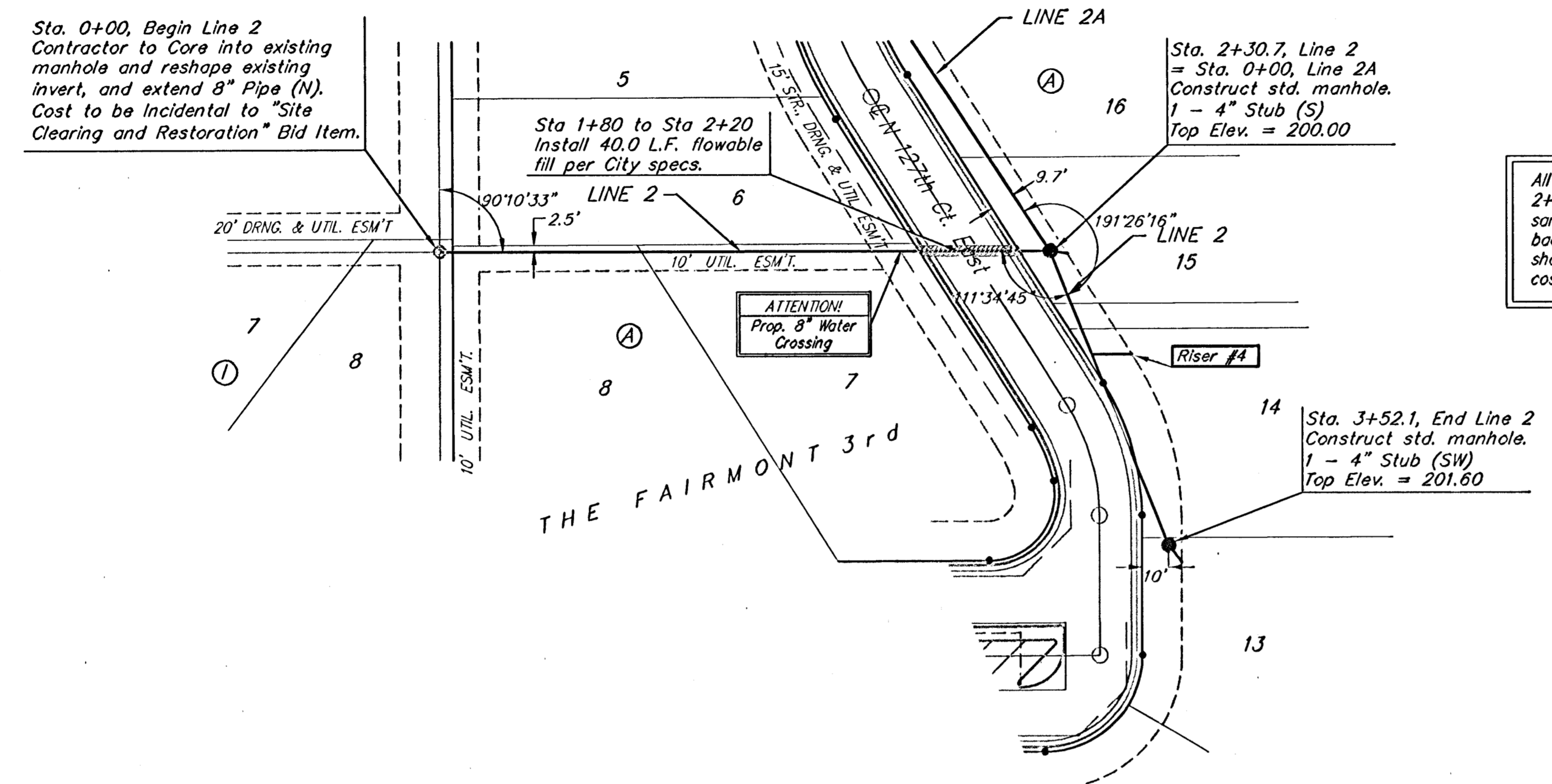
Elev. = 204.61 (City Datum)

"a" Cut on Curb at North East Entrance to Church of the Magdalen 2nd Addition.

Elev. = 190.48 (City Datum)



Scale: 1" = 40' Horizontal  
1" = 5' Vertical  
= Iron



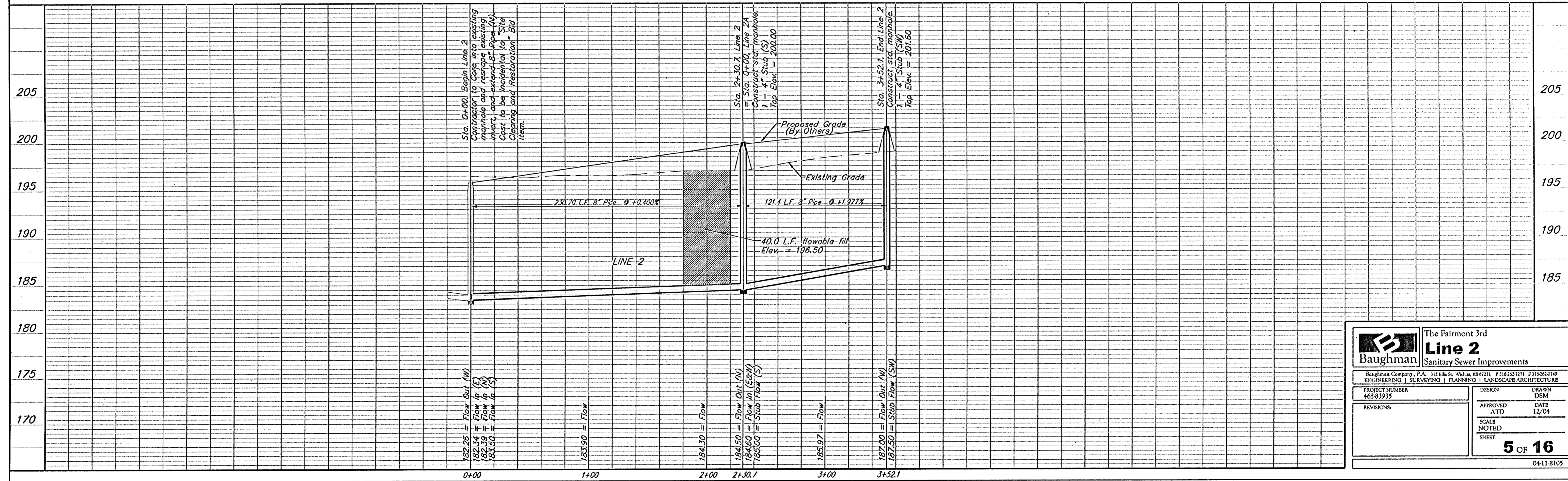
All trench and manhole excavation areas from Sta. 2+30.7 to Sta. 3+52.1, Line 2 shall be backfilled with sand. Except where flowable fill is called out. The sand backfill shall be within two feet of existing grade and shall be water-jetted and vibrated during backfilling. All costs shall be subsidiary to pipe cost.

Contractor to verify depth & location of existing sanitary sewer manholes and utilities prior to construction.

**SEWER SERVICE TABLE**

NUMBER	TYPE	LOCATION			STATION DIRECTION	FOR INFORMATION ONLY	
		LOT NO.	BLOCK NO.	LINE NO.		APPROXIMATE LENGTH 4" PIPE	
4	8" X 4" Tee Saddle	14	A	2	2+74.0/21.	VERTICAL 11.5'	HORIZONTAL 15.0'

NOTE: Vertical Riser Pipe shall be extended to 2' minimum above ground water elevation and 4' maximum below proposed ground elevation. Riser construction shall be according to method "B". See Detail, sheet 10.



**Baughman** The Fairmont 3rd  
**Line 2**  
Sanitary Sewer Improvements

Baughman Company, P.A. 115 Elm St. 954th St. 4711 P 315262701 F 315262049  
ENGINEERING | SURVEYING | PLANNING | LANDSCAPE ARCHITECTURE

PROJECT NUMBER 468-83935	DESIGN ATD	DRAWN DSM	DATE 12/04
REVISIONS:	SCALE NOTED	SHEET <b>5 OF 16</b>	

04-11-B105