

GENERAL NOTES:

- The Contractor shall comply with all applicable safety regulations. All construction shall be completed following current City Standard Specifications and Special Provisions.
- Contractor will be required to provide notice to utility companies a minimum of seventy-two (72) hours prior to any excavation, as follows:
Kansas One-Call 687-2470
The Contractor must notify the following in case of an emergency:
AT&T 1-800-246-8464
Black Hills Energy 1-800-694-8989
City of Wichita Water & Sewer 1-316-219-8921
City of Wichita Stormwater 1-316-268-4090
City of Wichita Traffic 1-316-268-4034
Cox Communications 1-888-249-3530
Kansas Gas Service 1-888-482-4950
Energy 1-800-544-4857
- Utility service lines, poles, etc. are to be adjusted as necessary by others prior to construction unless the plans specifically call for their adjustment by the Contractor or unless the plans specifically identify a utility to be adjusted by its owner during construction. Existing utilities and their location, as shown on the plans, represent the best information obtainable for design. The Contractor will be required to work around existing utilities within the right-of-way which do not conflict with proposed construction.
- Rubble from the removal of miscellaneous structures and excess excavation which is to be wasted shall be disposed of on sites to be provided by the Contractor. These sites shall be approved by the Engineer as to suitability, appearance and site location. Locations, in the opinion of the Engineer, that will leave an unsightly appearance will not be approved. All disposal sites must be approved by the Kansas Department of Health and Environment. Material either stockpiled or disposed of in a flood plain will require a Kansas State Board of Agriculture permit. Any material dumped in waters of the United States or wetlands is subject to U.S. Corps. of Engineers permitting regulations. Any material buried or stockpiled beyond approved construction limits will require additional archaeological investigations unless buried in a previously approved borrow location.
- Trees and shrubs in public right-of-way which are in direct conflict with proposed new construction shall be removed by the Contractor with the City Engineer's approval. Cost of removal shall be included in lump sum bid item "Site Clearing". Trees and shrubs which are not in direct conflict with proposed new construction shall be saved and protected from damage.
- The Contractor shall give all property owners and/or tenants of developed property abutting the construction of this project a minimum of ten (10) days notice prior to start of construction.
- The Contractor shall be responsible for preserving property irons. The Contractor will be required to re-establish any property irons which are damaged or destroyed by his construction operations. Such irons shall be re-established by a licensed land surveyor in accordance with state laws
- All elevations shown are City Datum.
- A saw cut of at least one-half the depth of existing surface courses or one-fourth the depth of the existing total pavement thickness shall be provided at locations where proposed construction abuts the existing surface course or pavement for which partial removal of that surface or pavement is required. Sawed joint to facilitate removal within three (3) feet of existing joints will not be permitted and for such instances the limits of removal shall extend to the existing joint. Such saw cuts will not be paid for directly and this cost shall be considered as subsidiary to the removal of the surface or pavement.

- Limits of earthwork shall match existing ground elevations at the right-of-way line unless otherwise noted on the plans with a new finished grade elevation. When a new finished grade elevation is shown, the earthwork shall extend one foot beyond the right-of-way line and then slope up or down using permissible slopes to match the existing ground surface.
- All existing and proposed erosion control measures including silt fencing, erosion control mat, straw bales, inlet barriers, and const. entrance shall be maintained throughout construction by the contractor and until project is accepted by the City of Wichita. The on-site engineer shall complete weekly reports on the status of erosion control measures. The contractor shall be required to comply with maintenance and/or replacement of erosion control measures as determined by the on-site engineer until project is accepted by City of Wichita. Maintenance and/or replacement of erosion control measures to be paid by L.S. bid item "Maintain Existing BMPs".
- All of street R/W adjacent to Reserves shall be seeded and mulched as follows:
Seed -- Kansas Premium Fescue Blend; 8 lbs. PLS/1000 Sq. Ft.
Annual Rye grass; 3 lbs./1000 Sq. Ft.
Fertilizer -- 12-24-12 Ratio; 45 Lbs./Ac.
Mulch -- 2 Tons Prairie Hay/Ac.
All other areas disturbed during construction are to be seeded as follows:
Seed -- Rye grass; 5 lbs./1000 Sq. Ft.
All costs associated with seeding including mobilization, preparation of ground, seeding, fertilizing, mulching, etc. shall be included in the L.S. bid item "Seeding".
- Contractor shall grade up or down at 4:1 slope from edge of phase being graded to the existing ground.
- The developer for this project is New Era IV, LLC, Christopher N. Stevens, Managing Member (316)648-2395

Benchmarks

BM #1: "□" on top of curb, north side of Calvert, 14.7' South of the most southerly corner common to Lots B3 and B4, Block D, Blue Lake Addition. Elev. = 103.95 City Datum

BM #2: "□" With + Cut on northwest face of drop inlet on north side of MacArthur Road, 79.4' north of centerline of MacArthur Road and 152.3' east-southeast of southwest corner of Reserve "C", Blue Lake 3rd Addition. Elev. = 95.55 City Datum

Project Earthwork Totals
Street Grading:
Excavation = 3,448 C.Y.
Loose Fill = 903 C.Y.
Compacted Fill = 683 C.Y.
Easement Grading:
Excavation = 3,065 C.Y.
Fill = 1,151 C.Y.
Total Project Length
1,749 L.F. = 0.33 Miles

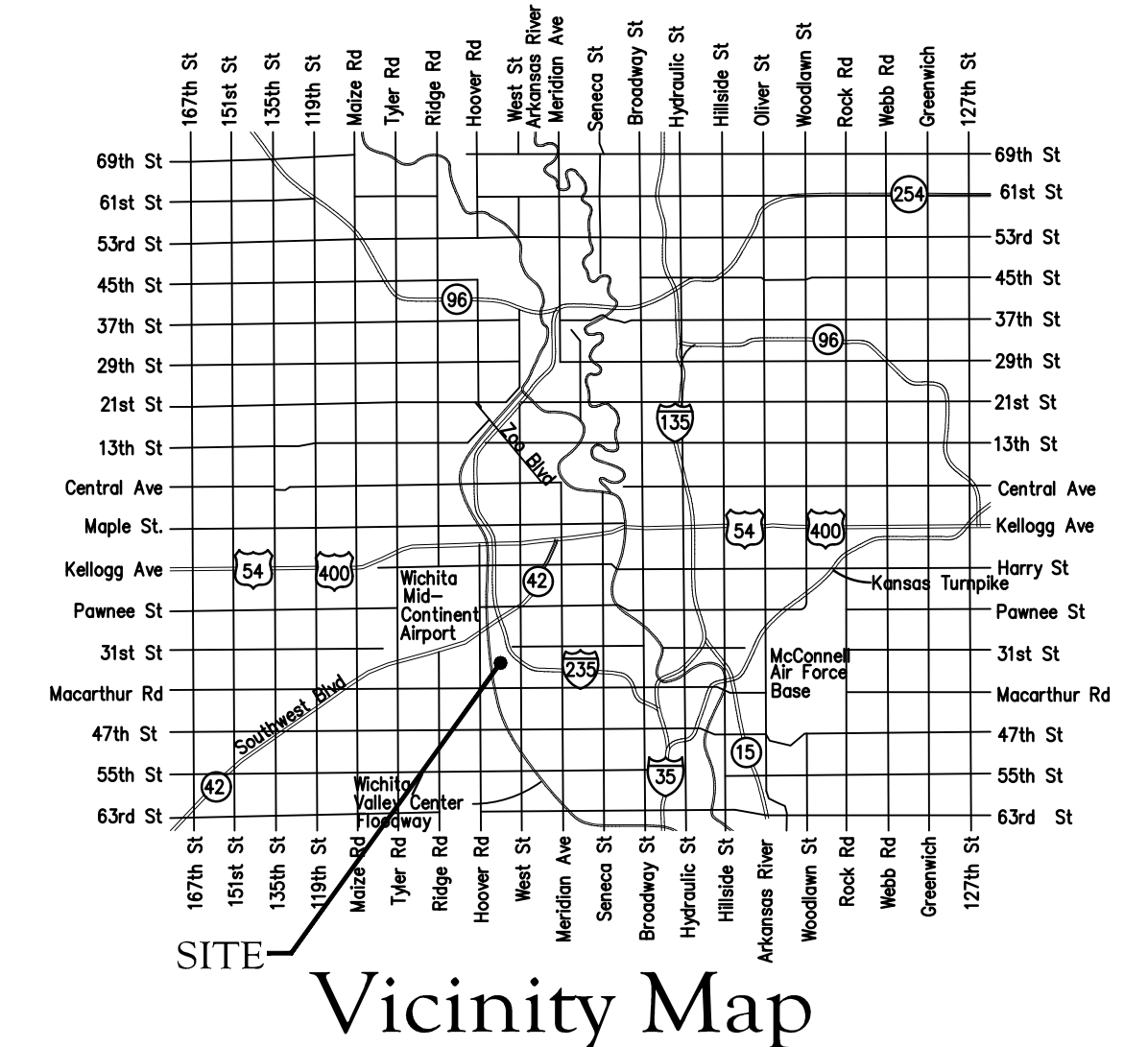
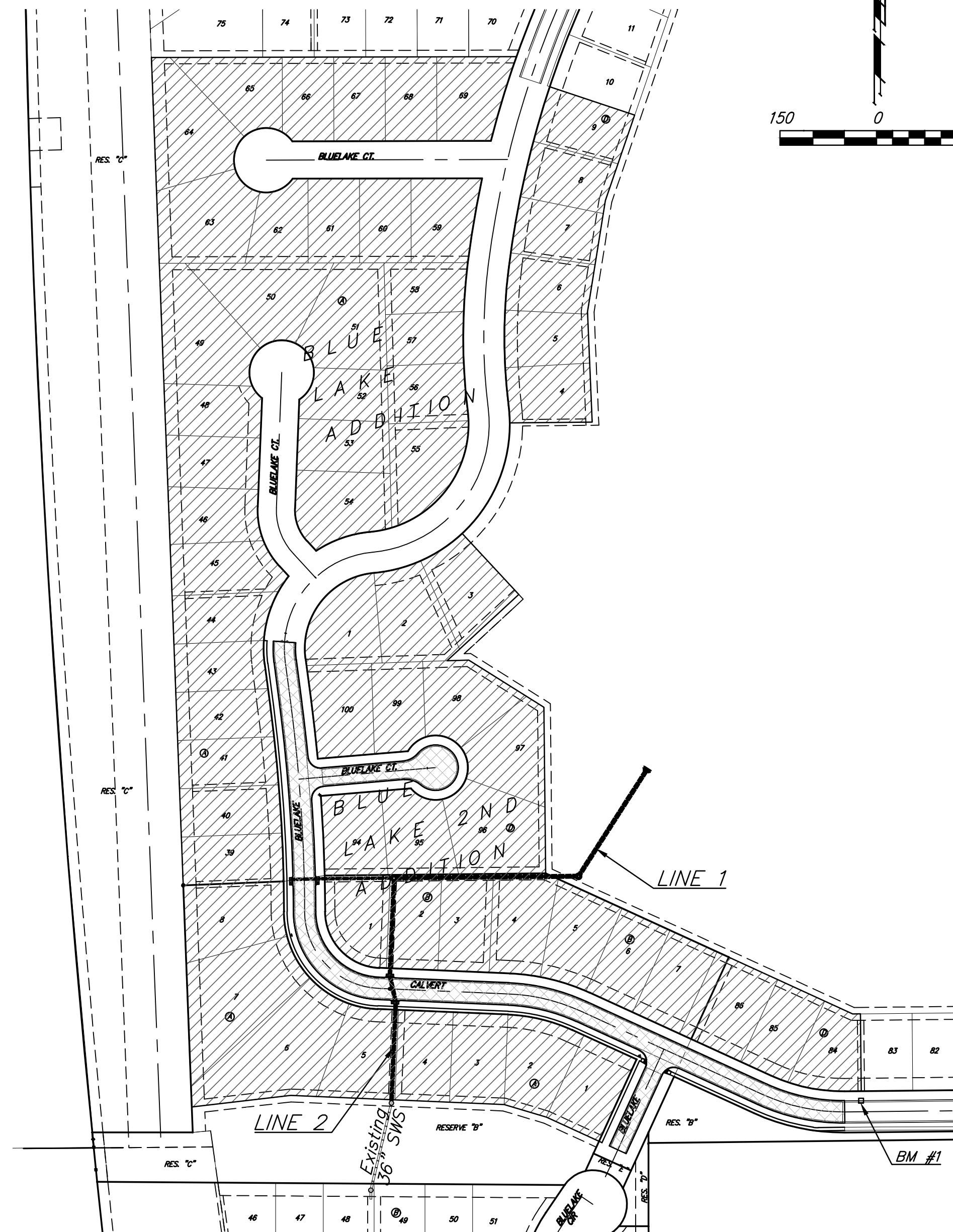
Benefit District 
Proposed Streets 

STREET PAVING FOR BLUELAKE WITH INCIDENTAL SWS IMPROVEMENTS to serve BLUE LAKE ADDITION BLUE LAKE 2ND ADDITION Phase I

Calvert and Bluelake from the east line of Lot 84, Block D, Blue Lake Addition, northwesterly and north, to the north line of Lot 43, Block A. Bluelake Ct, from the east line of Bluelake, east to and including the cul-de-sac; and on Bluelake, from the south line of Calvert, south to the north line of Reserve E

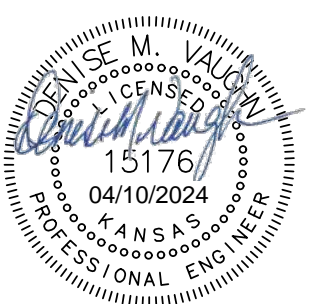
CITY OF WICHITA, KANSAS

Paul Gunzelman, P.E. Interim City Engineer
Project Number 472-2023-085885
Org Code 47473223
Munis Number E3082



Sheet Index

Title Sheet	1
Calvert/Bluelake	2-5
Bluelake	6
Bluelake Ct.	7
SWS Line 1	8-9
SWS Line 2	10
Erosion Control/ Esmt. Grading Plan	11
Asphalt Paving Detail	12
Curb & Gutter Detail	13
Sign Detail	14
Valley Gutter Detail	15
Wheelchair Ramp Detail	16
Type 1A Inlet L=5' and 10' Detail	17
Pavement Underdrain Detail	18
Backyard Inlet Detail	19
Precast Concrete Manhole Detail	20
MH-Inlet Frame & Cover Detail	21
Miscellaneous Detail	22
Headwall 42-48 Detail	23
Erosion Control BMP Details	24-28
Street X-Sections	29-34
Coordinate Sheet	35
Copy of Plat	36-37



April 10, 2024

 **BAUGHMAN COMPANY**
315 Ellis St. Wichita, KS 67211 316-262-7271
BaughmanCo.com