

BENCHMARKS:
 BM #1 - "□" on top of curb, north side of Calvert, 14.7' south of the most southerly corner common to Lots 83 and 84, Block D, Blue Lake Addition.
 Elev. = 103.95 City Datum

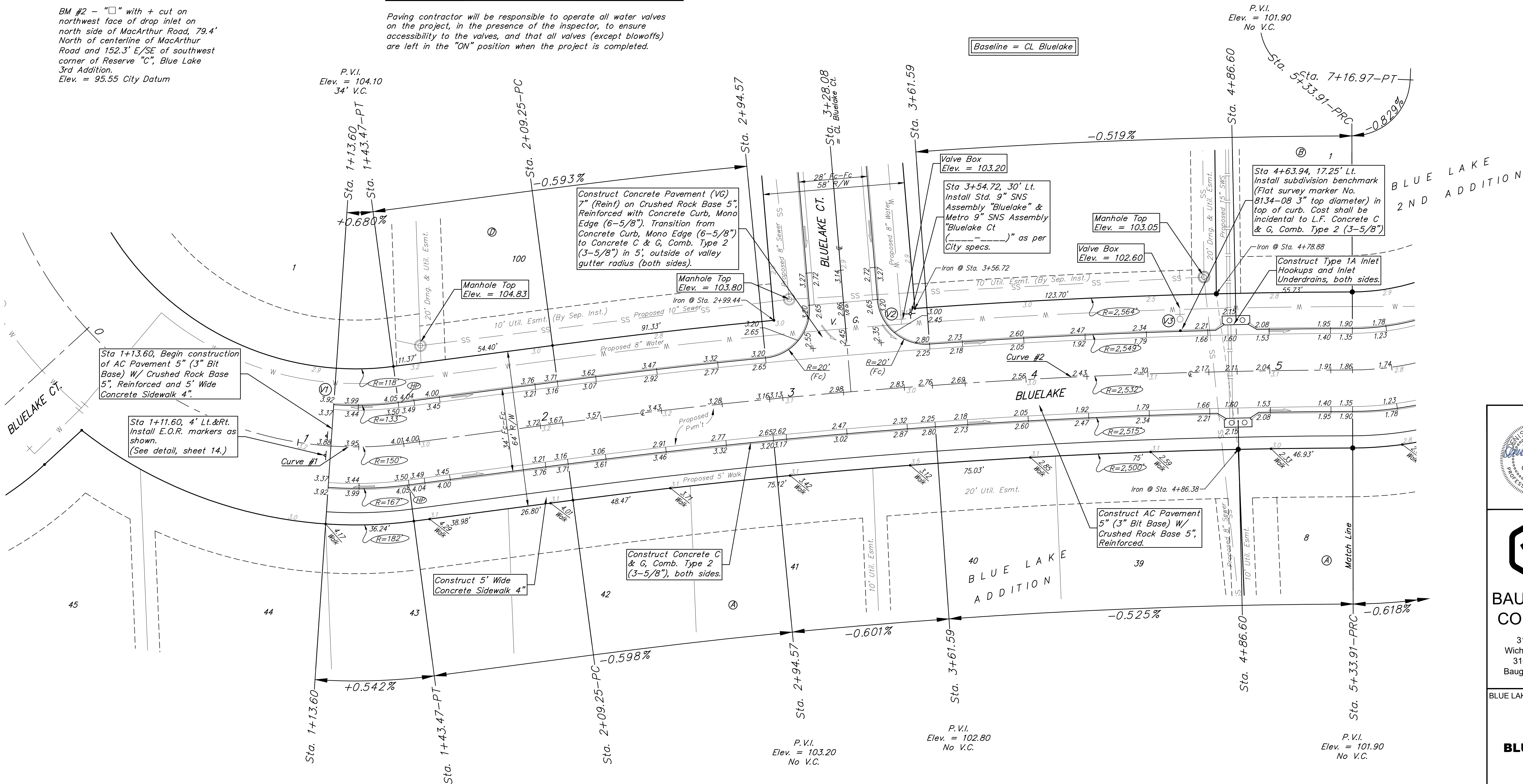
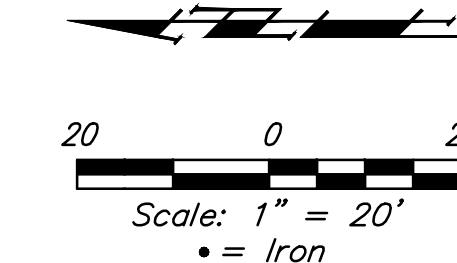
BM #2 - "□" with + cut on northwest face of drop inlet on north side of MacArthur Road, 79.4' North of centerline of MacArthur Road and 152.3' E/SE of southwest corner of Reserve "C", Blue Lake 3rd Addition.
 Elev. = 95.55 City Datum

WATER VALVE LOCATION TABLE

VALVE NUMBER	STREET	BASELINE STATION	OFFSET DISTANCE	OFFSET DIRECTION
V1	Bluelake	1+13.60	26'	Lt.
V2	Bluelake	3+50.84	26'	Lt.
V3	Bluelake	4+63.94	26'	Lt.

Paving contractor will be responsible to operate all water valves on the project, in the presence of the inspector, to ensure accessibility to the valves, and that all valves (except blowoffs) are left in the "ON" position when the project is completed.

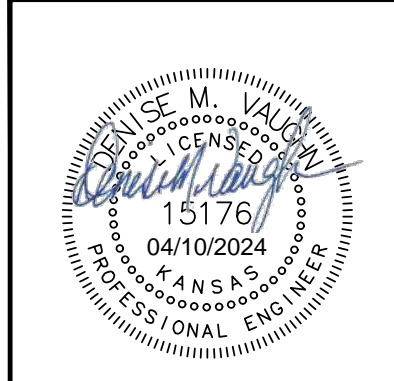
Street & Station	Location Description	Elevation
Bluelake 4+63.94, 17.25' Lt.	Adjacent to Fire Hydrant 15' north of common lot corner of Lot 94, Block D Blue Lake Addition and Lot 94, Block D and Lot 1 Block B, Blue Lake 2nd Addition.	



Curve #1					
Curve Data Based on Centerline					
Rad. = 150' Delta = 11°24'33" Tangent = 14.98'					
Arc = 29.87' L.C. = 29.82' Def./Ft. = 11.45882 Min.					
Face Chord Lengths					
Station	Arc	8' Left	8' Right	Defl.	Total Defl.
1+13.60	-	-	-	0°00'00"	0°00'00"
1+25.00	11.40'	9.50'	13.30'	2°10'38"	2°10'38"
1+43.47	18.47'	15.38'	21.53'	3°31'39"	5°42'17"

P.V.I.
 Elev. = 104.10
 34' V.C.

NOTE: ROLL TYPE CURB & GUTTER (TYPE 2) TO BE CONSTRUCTED ON THE PAVEMENT SHOWN ON THIS SHEET. TOP OF CURB ELEVATIONS ARE GIVEN FOR FULL HEIGHT CURB (TYPE 4).



BAUGHMAN COMPANY
 315 Ellis St.
 Wichita, KS 67211
 316-262-7271
 BaughmanCo.com

BLUE LAKE ADD./2ND ADD.
 PHASE 1

BLUELAKE

STREET & SWS IMPROVEMENTS

PROJECT NUMBER:
 472-2023-085885

DESIGN: AEG DRAWN: TMS
 DATE: April 10, 2024

SHEET **2** OF **37**

File: E:\Projects\Blue Lake 2nd Addition\Engineering\Phase 1\15176\15176-SWS.dwg