

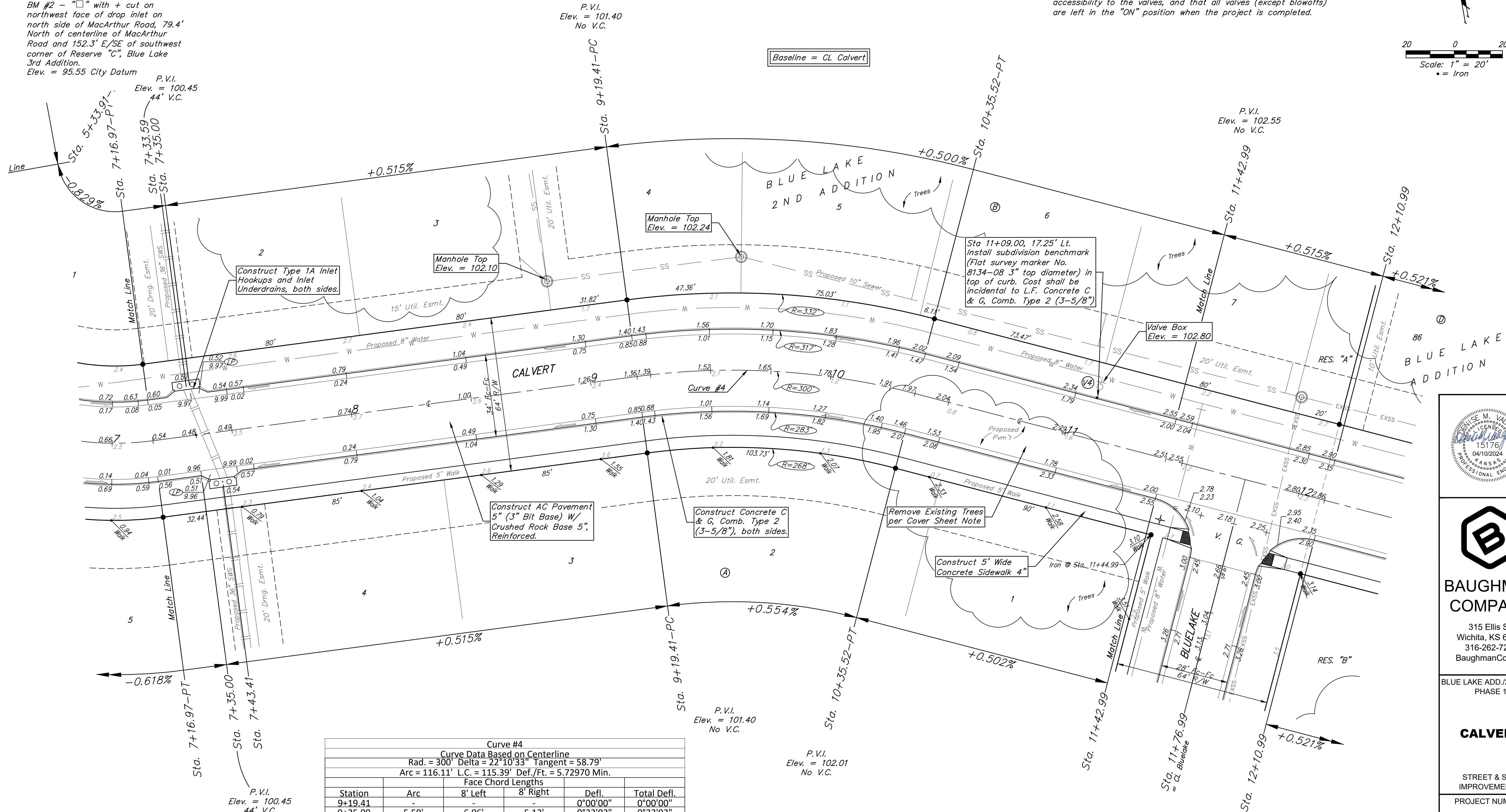
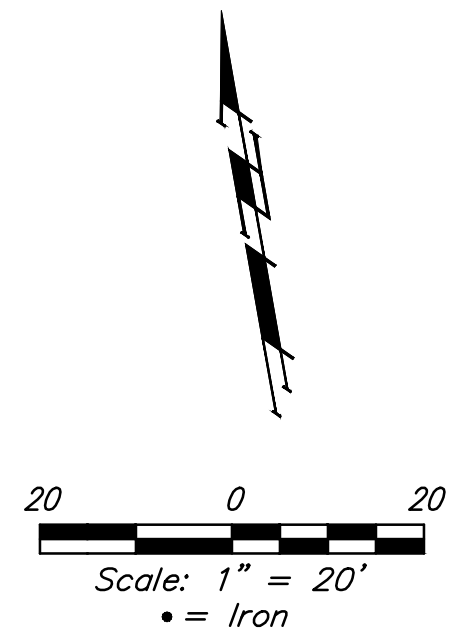
**BENCHMARKS:**  
 BM #1 - "□" on top of curb, north side of Calvert, 14.7' south of the most southerly corner common to Lots 83 and 84, Block D, Blue Lake Addition.  
 Elev. = 103.95 City Datum

BM #2 - "□" with + cut on northwest face of drop inlet on north side of MacArthur Road, 79.4' North of centerline of MacArthur Road and 152.3' E/SE of southwest corner of Reserve "C", Blue Lake 3rd Addition.  
 Elev. = 95.55 City Datum

Subdivision Bench Marks		
Street & Station	Location Description	Elevation
Calvert 11+09.00, 17.25' Lt.	Adjacent to Fire Hydrant near common front lot corner of Lots 6 and 7, Block B, Blue Lake 2nd Addition.	

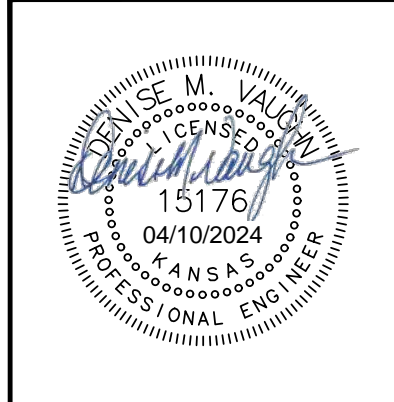
WATER VALVE LOCATION TABLE				
VALVE NUMBER	STREET	BASELINE STATION	OFFSET DISTANCE	OFFSET DIRECTION
V4	Calvert	11+09.00	26'	Lt.

Paving contractor will be responsible to operate all water valves on the project, in the presence of the inspector, to ensure accessibility to the valves, and that all valves (except blowoffs) are left in the "ON" position when the project is completed.



Curve #4					
Curve Data Based on Centerline					
Rad. = 300' Delta = 22°10'33" Tangent = 58.79'					
Arc = 116.11' L.C. = 115.39' Def./Ft. = 5.72970 Min.					
Face Chord Lengths					
Station	Arc	8' Left	8' Right	Defl.	Total Defl.
9+19.41	-	-	-	0°00'00"	0°00'00"
9+25.00	5.59'	6.06'	5.12'	0°32'02"	0°32'02"
9+50.00	25.00'	27.08'	22.91'	2°23'14"	2°55'16"
9+75.00	25.00'	27.08'	22.91'	2°23'15"	5°18'31"
10+00.00	25.00'	27.08'	22.91'	2°23'14"	7°41'45"
10+25.00	25.00'	27.08'	22.91'	2°23'15"	10°05'00"
10+35.52	10.52'	11.40'	9.64'	1°00'16"	11°05'16"

NOTE: ROLL TYPE CURB & GUTTER (TYPE 2) TO BE CONSTRUCTED ON THE PAVEMENT SHOWN ON THIS SHEET. TOP OF CURB ELEVATIONS ARE GIVEN FOR FULL HEIGHT CURB (TYPE 4).



**BAUGHMAN COMPANY**  
 315 Ellis St.  
 Wichita, KS 67211  
 316-262-7271  
 BaughmanCo.com

BLUE LAKE ADD./2ND ADD.  
 PHASE 1

**CALVERT**

STREET & SWS IMPROVEMENTS  
 PROJECT NUMBER:  
 472-2023-085885

DESIGN: AEG DRAWN: TMS  
 DATE: April 10, 2024

File: E:\Projects\Blue Lake 2nd Addition\Engineering\Phase 1\15176\15176.dwg