

BENCHMARKS:
 BM #1 - "□" on top of curb, north side of Calvert, 14.7' south of the most southerly corner common to Lots 83 and 84, Block D, Blue Lake Addition.
 Elev. = 103.95 City Datum

BM #2 - "□" with + cut on northwest face of drop inlet on north side of MacArthur Road, 79.4' North of centerline of MacArthur Road and 152.3' E/SE of southwest corner of Reserve "C", Blue Lake 3rd Addition.
 Elev. = 95.55 City Datum

Trees in conflict with storm water sewer construction to be removed by contractor. To be paid for as lump sum bid item "Site Clearing"

All other trees shall remain and be protected from damage during construction. Overhanging limbs shall be trimmed by the Contractor using a chain saw only as necessary for construction and with approval of the Engineer. Cost of tree trimming to be included in bid item "Site Clearing"

Contractor to adjust proposed end section locations to match existing pond slopes.

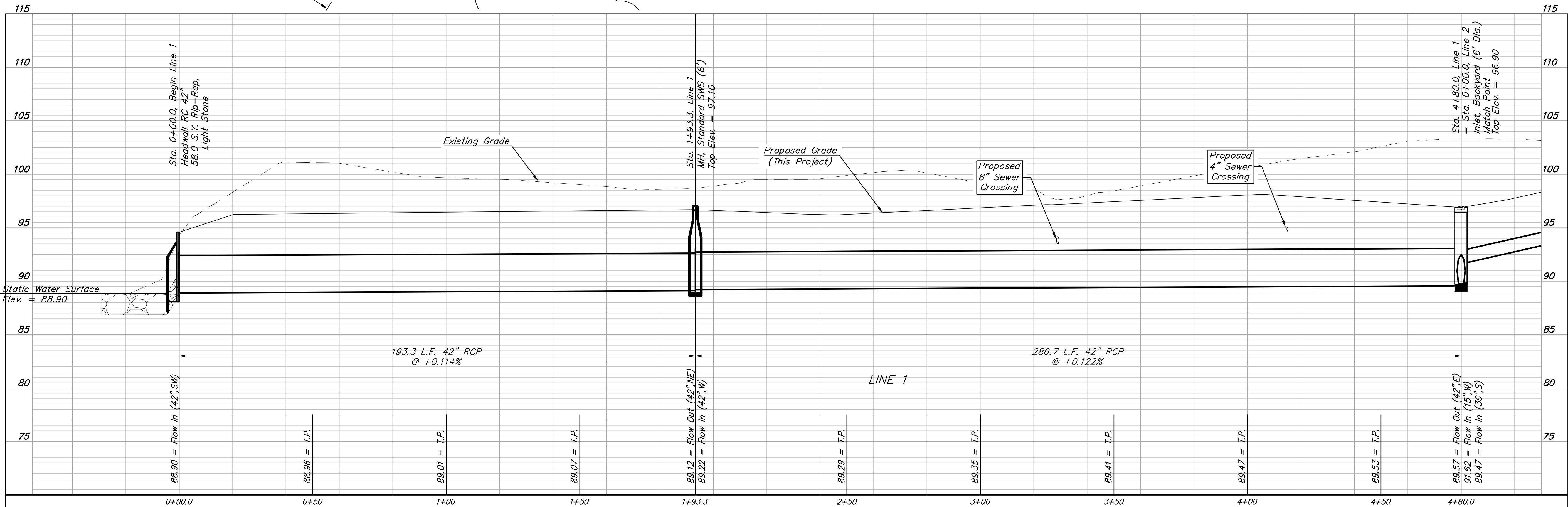
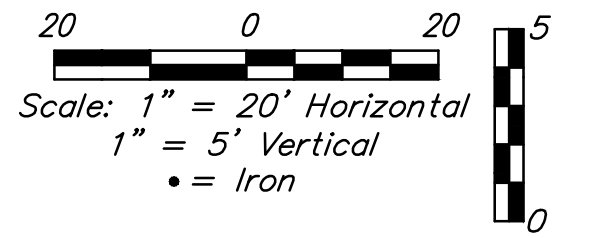
Sta. 1+93.3, Line 1
 MH, Standard SWS (6')
 Top Elev. = 97.10
 N=28,325.62 E=32,499.49

Sta. 0+00.0, Begin Line 1
 Headwall RC 42"
 58.0 S.Y. Rip-Rap,
 Light Stone
 N=28,488.39 E=32,603.71

Proposed
 4" Sewer
 Crossing

Proposed
 8" Sewer
 Crossing

Sta. 4+80.0, Line 1
 = Sta. 0+00.0, Line 2
 Inlet, Backyard (6' Dia.)
 Match Point
 Top Elev. = 96.90
 N=28,322.68 E=32,212.78



**BAUGHMAN
 COMPANY**

315 Ellis St.
 Wichita, KS 67211
 316-262-7271
 BaughmanCo.com

BLUE LAKE ADD./2ND ADD.
 PHASE 1

LINE 1

STREET & SWS
 IMPROVEMENTS

PROJECT NUMBER:
 472-2023-085885

DESIGN: AEG DRAWN: TMS

DATE: April 10, 2024

SHEET **8** OF **37**

File: E:\Projects\Blue Lake 2nd Addition\Engineering\Phase 1\1StSWS\2nd Addition\Engineering\Phase 1\1StSWS.dwg