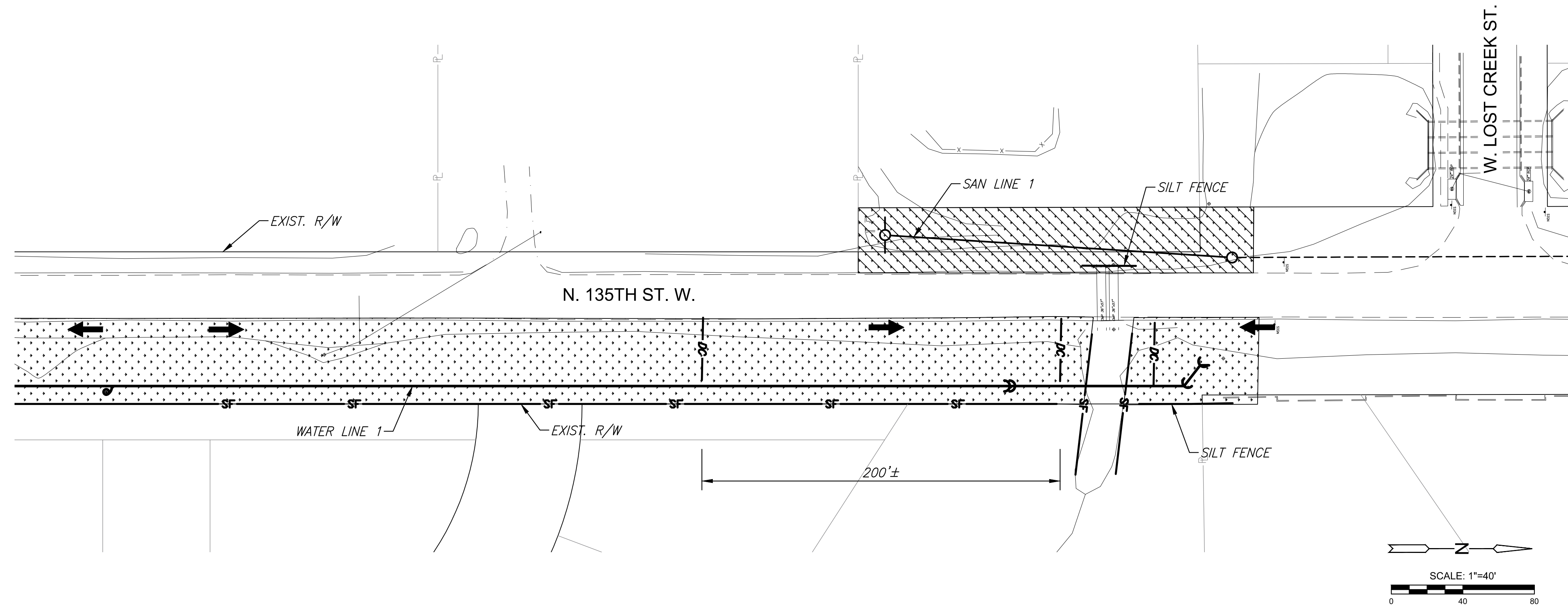


PLOTTED: Tuesday, April 02, 2024 @ 04:34PM

J:\PROJECTS\2022\2201010447\_COW\_135TH STREET FROM CENTRAL TO 13TH STREET\00 220447\_CAD\SHOTS\05 CIVIL\EROSION\WATER-SANITARY SUBMITTAL\220447\_VTBS-SAN EROSION PLAN.DWG



**EROSION CONTROL NOTES**

THIS PROJECT WILL NOT DISTURB MORE THAN 0.78 ACRES AREA WITHIN CONST. LIMITS.

REFER TO CITY OF WICHITA STANDARDS FOR BMP INSTALLATION, INSPECTION AND MAINTENANCE DETAILS AND SPECIFICATIONS.

COST FOR EACH EROSION AND SEDIMENT CONTROL ITEM SHALL INCLUDE MAINTENANCE, INSPECTION AND EVENTUAL REMOVAL. BESIDES KEEPING EACH DEVICE IN WORKING ORDER, MAINTENANCE SHALL INCLUDE, AT A MINIMUM, SEDIMENT REMOVAL BEFORE 50% OF THE DEVICE'S CAPACITY IS REACHED.

CONTRACTOR SHALL ADJUST EROSION AND SEDIMENT CONTROL PLANS TO CONFORM TO ACTUAL CONSTRUCTION OPERATIONS. ALL CHANGES TO PLAN SHALL BE APPROVED BY THE CITY.

STABILIZED ENTRANCES SHALL BE PROVIDED AS DIRECTED BY THE CITY. 2 TOTAL ENTRANCES ARE ANTICIPATED ON THE PROJECT.

STOCKPILING OF EXCAVATED MATERIAL ON THE PROJECT SITE IS GENERALLY PROHIBITED. SMALL AND INTERIM STOCK PILES NOT IMMEDIATELY HAUL OFF-SITE SHOULD BE ENCLOSED AND PROTECTED WITH SILT BARRIER AROUND THE ENTIRE CIRCUMFERENCE OF THE STOCK PILE. INSTALLING AND MAINTAINING THIS FENCE SHALL BE CONSIDERED SUBSIDIARY TO THE BID ITEM "BMP, SILT FENCE"

EROSION CONTROL DEVICES WILL NEED TO BE INSTALLED AS APPLICABLE FOR THE APPROPRIATE CONSTRUCTION PHASE. CONTRACTOR SHALL ADJUST EROSION AND SEDIMENT CONTROL PLAN TO CONFORM TO ACTUAL CONSTRUCTION OPERATIONS. ONCE INSTALLED, THE DEVICES SHALL REMAIN IN-PLACE AND CONTINUE TO BE MAINTAINED UNTIL NO LONGER NECESSARY AS DETERMINED BY THE CITY.

THE CONTRACTOR SHALL RESEED ALL UNDEVELOPED AREAS DISTURBED BY CONSTRUCTION WITH A MIXTURE OF RYEGRASS (APPLIED AT A RATE OF 200 LBS. PER ACRE) AND BUFFALO GRASS, DEPENDING ON THE SOIL CONDITIONS (APPLIED AT A RATE OF 200 LBS. PER ACRE) AND BUFFALO GRASS, DEPENDING ON THE SOIL CONDITIONS (APPLIED PER STANDARD SPECIFICATIONS). PURE NITROGEN FERTILIZER SHALL ALSO BE APPLIED AT A RATE OF 1.5 LBS. PER THOUSAND SQUARE FEET. THE SEED SHALL BE WATERED WITH A DEEP SOAKING EVERY TWO (2) WEEKS DURING DRY PERIODS UNTIL A MATURE STAND OF GRASS IS OBTAINED. THE "RECAPITULATION OF QUANTITIES" SHOWS THE ESTIMATED SQUARE YARDS OF DISTURBED AREA TO BE SEEDED, WITH A BID ITEM FOR THE SAME. THE PERMANENT SEEDING MAY BE OMITTED ONLY IF SODDING IS REQUIRED. THE CONTRACTOR SHALL BE RESPONSIBLE FOR INSTALLING EROSION CONTROL BLANKET (CURLX 1, OR APPROVED EQUAL) AT THE BACK OF CURB, TO AND INCLUDING THE LIMITS OF ALL SEEDED AREAS. ALL COSTS FOR THIS WORK SHALL BE SUBSIDIARY TO THE SEEDING BID ITEMS.

TURF REINFORCEMENT MAT SHALL BE 100% BIODEGRADABLE (NOT JUST PHOTODEGRADABLE), SHALL BE RATED FOR A MINIMUM OF 2 LB. PER SQ. FT. SHEAR STRESS WITH UP TO A 24 MONTH PROTECTION LIFE. SUITABLE MATS INCLUDE NORTH AMERICAN GREEN MODEL BIONET C125BN, AMERICAN EXCELSIOR MODEL AEC PREMIER STRAW/COCONUT FIBRENET, AND WESTERN EXCELSIOR MODEL EXCEL CS-3 ALL NATURAL.

ALL MATERIAL AND INSTALLATION COSTS FOR TURF REINFORCEMENT MAT SHALL BE PAID FOR AS "TURF REINFORCEMENT MAT". SEEDING AND SURFACE PREPARATION BELOW TURF REINFORCEMENT MAT SHALL BE SUBSIDIARY TO "SEEDING".

EROSION CONTROL AND SITE RESTORATION SUMMARY-WATER		
ITEM	QUANTITY	UNIT
BMP, Ditch Check	330	L.F.
BMP, Silt Fence	2,446	L.F.
BMP, Construction Entrance	2	EACH
Seeding (For Information Only)	2.5	ACRE

EROSION CONTROL AND SITE RESTORATION SUMMARY-SANITARY SEWER		
ITEM	QUANTITY	UNIT
BMP, Silt Fence	30	L.F.
BMP, Construction Entrance	1	EACH
Turf Reinforcement Mat (For Information Only)	900	S.Y.
Seeding (For Information Only)	0.2	ACRE

**LEGEND**

→ FLOW ARROW

SEED AREAS

TURF REINFORCEMENT MAT OVER SEEDED AREA

SILT FENCE

DITCH CHECK

CONST. LIMITS



WATER AND SANITARY SEWER IMPROVEMENTS FOR  
**135TH STREET WEST**  
 FROM CENTRAL AVE TO 13TH STREET

©2024  
 MKEC Engineering  
 All Rights Reserved  
 www.mkec.com  
 These drawings and their contents, including, but not limited to, all concepts, designs, & ideas are the exclusive property of MKEC Engineering (MKEC), and may not be used or reproduced in any way without the express consent of MKEC.

**TEMPORARY EROSION CONTROL & SITE RESTORATION**

PROJECT NO. 2201010447

DATE 4/2/24

SCALE 1"=40'

DESIGNED DRAWN CHECKED  
 JRA RAM JRA

NO. REVISION DATE

SHEET NO.

14 OF 26

Sh. No. 14