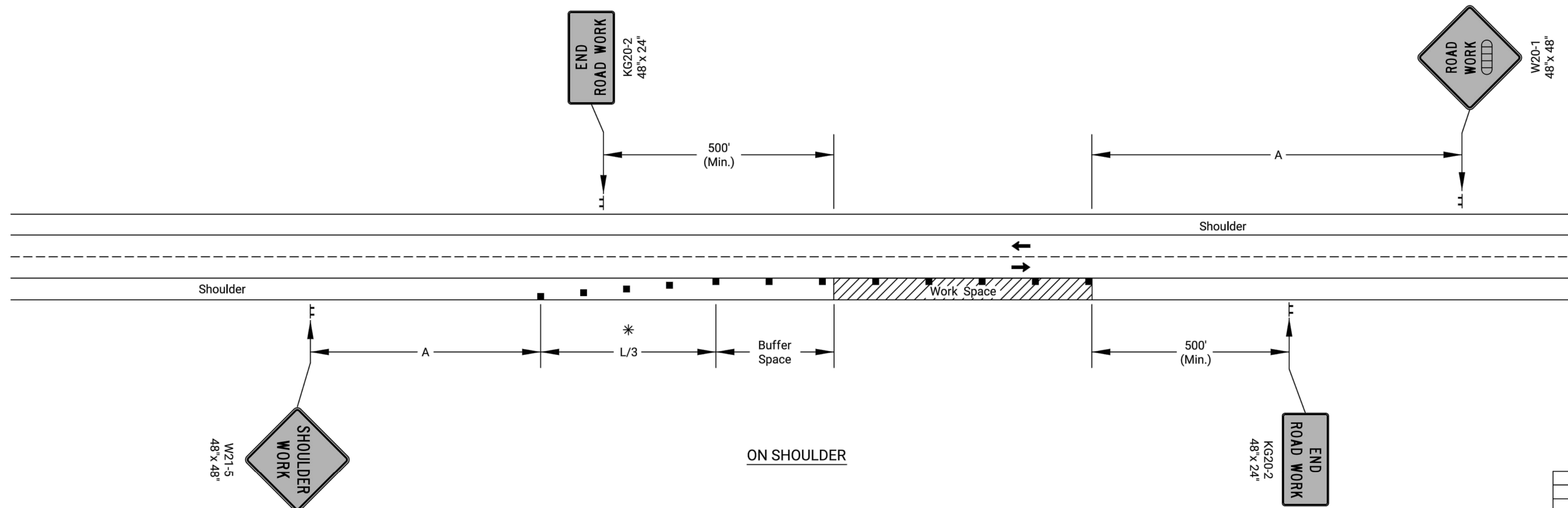


Notes:

No traffic control is required if the Work Space is located outside of the clear zone.

For operations of 60 minutes or less, all signs and channelizing devices may be eliminated if a vehicle with high-intensity rotating, flashing, oscillating, or strobe lights is used.



* Omit taper if paved shoulder is less than 8' wide.

- Channelizing Device
- ◻◻◻◻ Ahead, 1500 ft, or 1 Mile

NO.	DATE	REVISIONS	BY	APPD.

KANSAS DEPARTMENT OF TRANSPORTATION

**TRAFFIC CONTROL
SHOULDER WORK
UNDIVIDED ROADWAY**

TE720 24 OF 26

FHWA APPROVAL	06-01-15	APP'D.	Kristina Ericksen
DESIGNED	L.E.R.	DETAILED	R.W.B.
DESIGN CK.	DETAIL CK.	QUANTITIES	QUAN. CK.
		TRACED	TRACE CK.