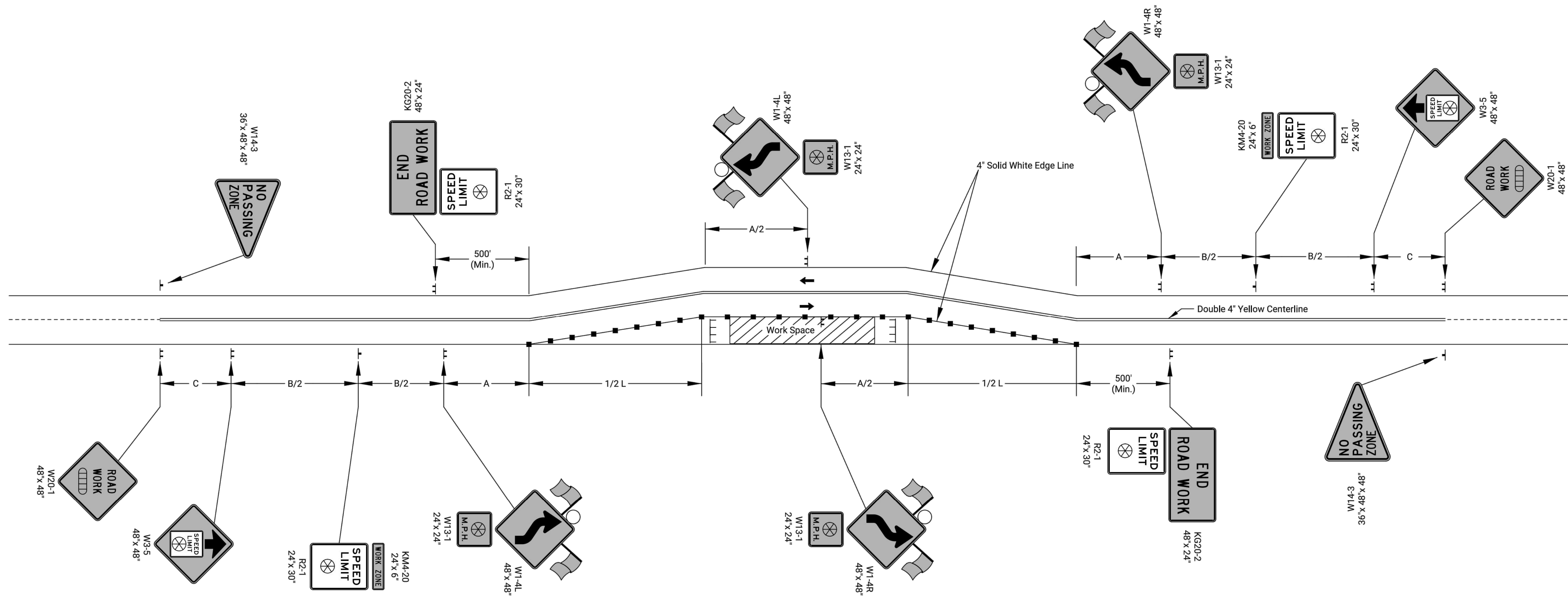


One W24-1 should be used per approach where the tangent distance between two reverse curves is less than 600 ft. If used, use in place of the first W1-4 and eliminate the second.



- Channelizing Device
- ⊥ Type 3 Barricades
- ▨ Ahead, 1500 ft, or 1 Mile
- ⊗ Speed to be Determined by the Engineer
- Type "A" Low Intensity Warning Light

NO.	DATE	REVISIONS	BY	APPD
01	03-13-18	W24-1 usage changed to Should	R.W.B.	E.G.K.

KANSAS DEPARTMENT OF TRANSPORTATION

### TRAFFIC CONTROL LANE SHIFT

TE724 25 OF 26

FHWA APPROVAL	03-13-18	APP'D.	Eric Kocher
DESIGNED	R.W.B.	DETAILED	R.W.B.
DESIGN CK.	DETAIL CK.	QUANTITIES	TRACED
		QUAN. CK.	TRACE CK.