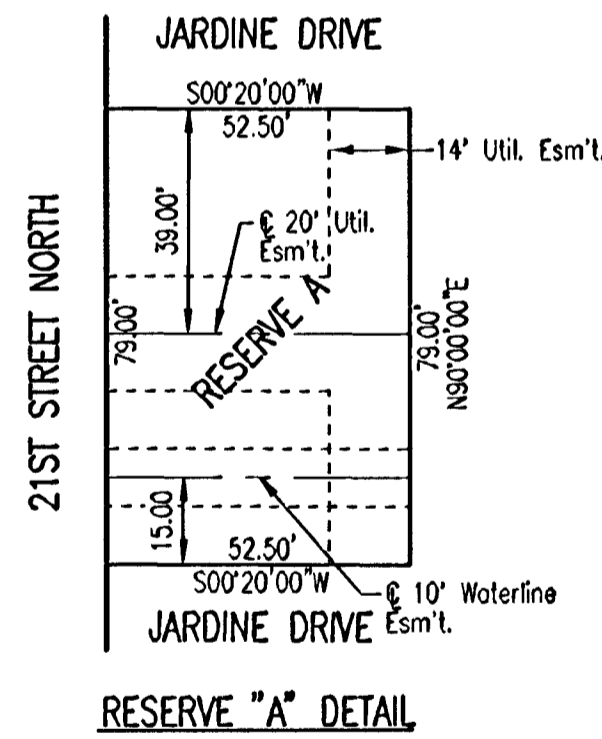
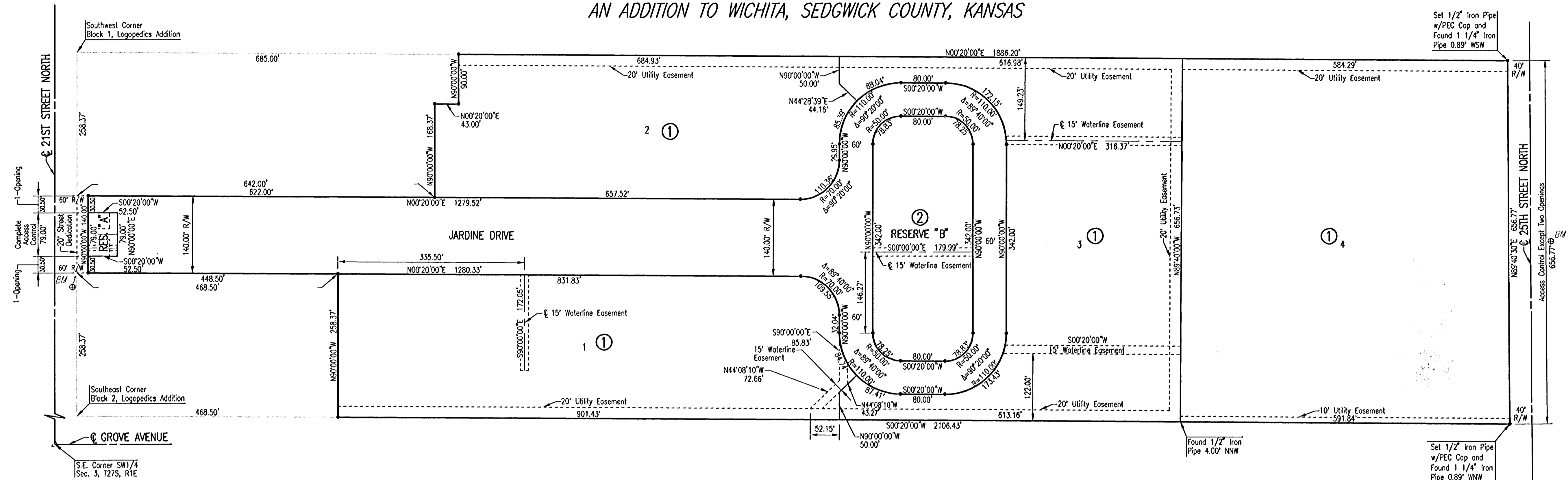


21ST STREET KIDS AND FAMILY EMPOWERMENT

AN ADDITION TO WICHITA, SEDGWICK COUNTY, KANSAS



SCALE: 1" = 100'
LEGEND

- SET 1/2" REBAR W/PEC CAP UNLESS OTHERWISE NOTED
 - ⊕ BM# Bench Mark/Vertical Control Point
- BENCHMARKS:**
- BM #1:**
 CHISELED "d" ON BACK OF CURB ON THE NORTH SIDE OF 21ST ST. N.
 ±50' EAST OF @ JARDINE NORTH BOUND.
 ELEV. = 127.54 CITY DATUM
 1314.94 N.G.V.D.
- BM #2:**
 3" T POST 0.5' BELOW GROUND CENTERED BETWEEN JARDINE NORTH
 AND SOUTH BOUND ±60' NORTH OF @ CROSS OVER ROAD ±620'
 NORTH OF @ 21ST ST. NORTH
 ELEV. = 127.275 CITY DATUM
 1314.675 N.G.V.D.
- BM #3:**
 T POST ±3' BELOW SURFACE, ±20' NORTH OF NORTH BACK OF CURB
 23RD ST, AT @ JARDINE.
 ELEV. = 128.630 CITY DATUM
 1316.03 N.G.V.D.
- BM #4:**
 T POST BELOW SURFACE, ±20' NORTH OF NORTH BACK OF CURB OF
 24TH ST., @ JARDINE EXTENDED.
 ELEV. = 130.265 CITY DATUM
 1317.665 N.G.V.D.
- BM #5:**
 CHISELED "d" TOP BACK OF CURB AT N.E. CORNER OF MADISON &
 25TH ST. N., NORTH CURB RETURN AT NORTH CORNER OF WHEEL
 CHAIR RAMP.
 ELEV. = 133.115 CITY DATUM
 1320.515 N.G.V.D.

DSNR: MDK OPER: JLS SCALE: 1"=100.00
 C:\2005\05416\002\05416-002-C-21stStreetKidsandFamilyEmpowerment\Plot 11-21-2005 08:01:22 am

	Revision	By	Date
	LATERAL 42, DISTRICT T, SANITARY SEWER NO. 12 21ST STREET KIDS AND FAMILY EMPOWERMENT		
	PLAT JAMES L. ARMOUR, P.E. - CITY ENGINEER CITY OF WICHITA PROJECT NO. 468-84115		
	Professional Engineering Consultants, P.A. 303 S. TOPEKA • WICHITA, KANSAS 67202 316-262-2691 • FAX 316-262-3003		
Designed by	MDK	Job No.	35-05416-002-42
Drawn by		Date	September 2005
			Sht. 3 of 12