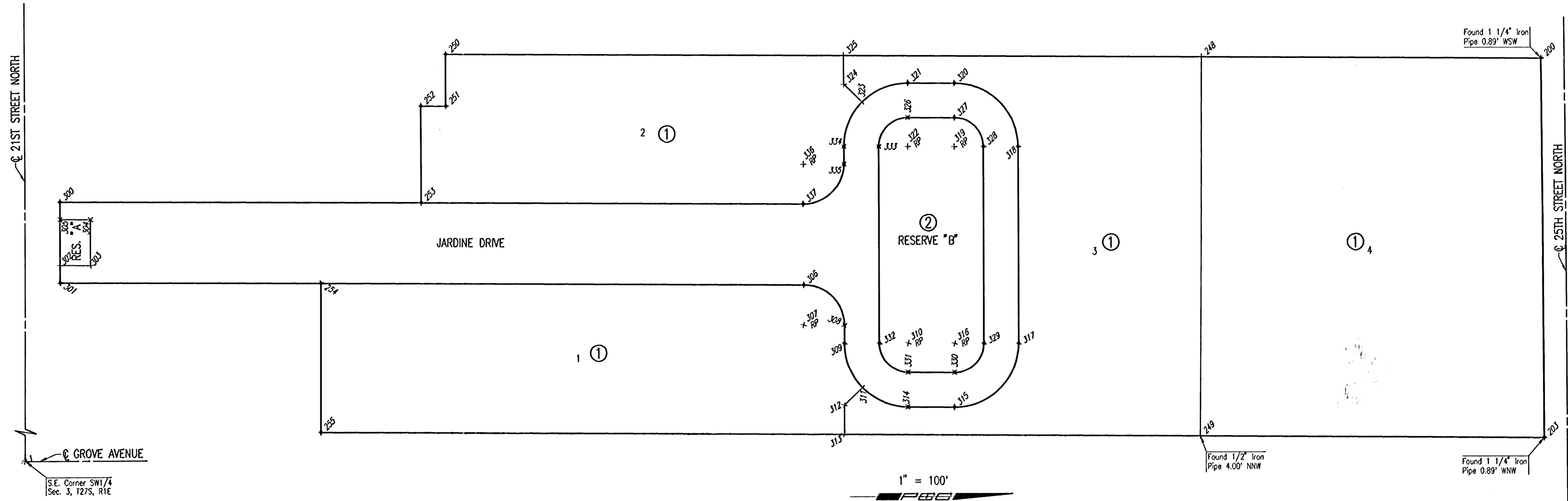


21ST STREET KIDS AND FAMILY EMPOWERMENT

AN ADDITION TO WICHITA, SEDGWICK COUNTY, KANSAS



POINT	NORTH	EAST
1	5,000.0000	5,000.0000
200	7,611.1565	4,101.5586
203	7,614.8819	4,758.3202
249	7,023.0561	4,754.8771
248	7,026.8767	4,098.1593
250	5,724.9884	4,090.5851
251	5,724.9884	4,180.5851
252	5,681.9891	4,180.3350
253	5,681.9891	4,348.7043
254	5,508.4921	4,487.6961
255	5,508.4921	4,746.0656
300	5,060.0000	4,345.0863
301	5,060.0000	4,485.0887
302	5,060.0000	4,454.5875
303	5,112.5000	4,454.8929
304	5,112.5000	4,375.8929
305	5,060.0000	4,375.5875
306	6,340.3094	4,492.5360
307	6,339.9023	4,562.5348
308	6,409.9023	4,562.5348
309	6,409.9023	4,594.5777
310	6,519.9023	4,594.5777
311	6,440.9567	4,671.1780

POINT	NORTH	EAST
312	6,409.9023	4,701.3099
313	6,409.9023	4,751.3099
314	6,519.2623	4,704.5758
315	6,599.2573	4,705.0412
316	6,599.8972	4,595.0431
317	6,709.8972	4,595.0431
318	6,709.8972	4,253.0468
319	6,599.8972	4,253.0468
320	6,600.5372	4,143.0487
321	6,520.5422	4,142.5833
322	6,519.9023	4,252.5814
323	6,441.4144	4,175.5123
324	6,409.9023	4,144.5699
325	6,409.9023	4,094.5699
326	6,520.1932	4,202.5823
327	6,600.1881	4,203.0476
328	6,649.8972	4,253.0468
329	6,649.8972	4,595.0431
330	6,599.6063	4,645.0422
331	6,519.6114	4,644.5768
332	6,469.9023	4,594.5777
333	6,469.9023	4,252.5814
334	6,409.9023	4,252.5814
335	6,409.9023	4,282.5300
336	6,339.9023	4,282.5300
337	6,339.4951	4,352.5289

+ 203 = COORDINATE POINT NO.

DSNR: MDK OPPER: TJS SCALE: 1"=100.00
 C:\2005\05416\002\05416-002-C-PROJECTCOORDINATES 11-21-2005 08:02:56 am

	No. _____ Revision _____ By _____ Date _____
	LATERAL 42, DISTRICT T, SANITARY SEWER NO. 12 21ST STREET KIDS AND FAMILY EMPOWERMENT PROJECT COORDINATES JAMES L. ARMOUR, P.E. - CITY ENGINEER CITY OF WICHITA PROJECT NO. 468-84115
	Professional Engineering Consultants, P.A. 303 S. TOPEKA • WICHITA, KANSAS 67202 316-262-2691 • FAX 316-262-3003
	Designed by MDK Drawn by TLS Job No. 35-05416-002-42 Date September 2005 Sht. 4 of 12