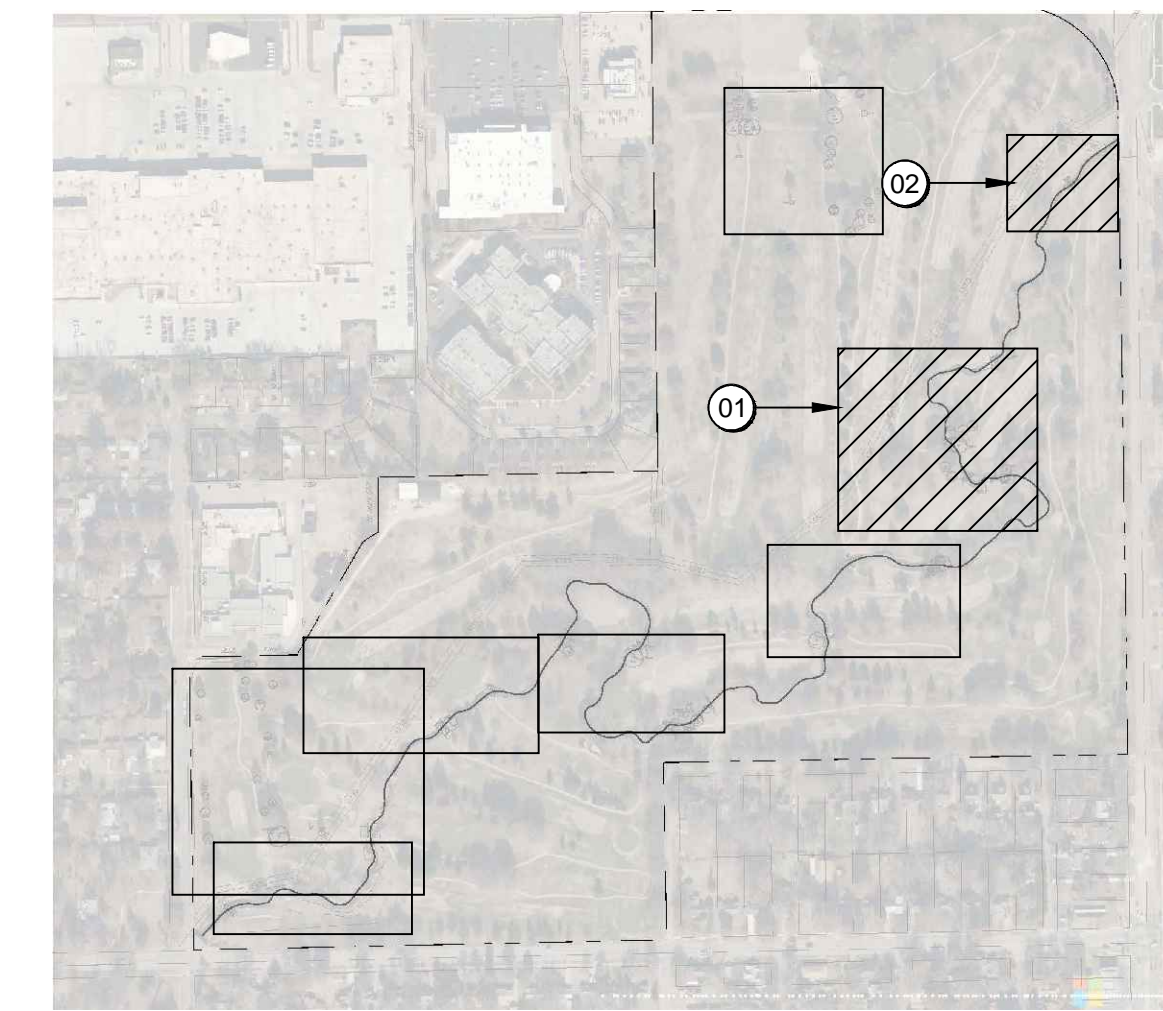


KEYMAP



#	Position X	Position Y
5.001	1664518.50	1676797.18
5.002	1664520.43	1676754.31
5.003	1664557.05	1676791.86
5.004	1664605.84	1676629.14
5.005	1664641.44	1676609.78
5.006	1664808.62	1676643.73
5.007	1664862.47	1676562.31
5.008	1664802.76	1676652.61
5.009	1664738.67	1676707.13
5.010	1664682.41	1676804.15
5.011	1664789.73	1676616.32
5.012	1664847.24	1676654.24
5.013	1664898.22	1676690.60
5.014	1664903.41	1676695.62
5.015	1664909.57	1676709.90
5.016	1664913.17	1676764.81
5.017	1664986.23	1676831.46
5.018	1665044.06	1676838.41
5.019	1665058.92	1676852.10
5.020	1664944.78	1676877.91
5.021	1664951.92	1676943.04
5.022	1664952.03	1677038.21
5.023	1665155.54	1677555.58
5.024	1665147.83	1677539.96
5.025	1665138.28	1677530.53
5.026	1665135.18	1677507.59
5.027	1665182.70	1677453.68
5.028	1665186.25	1677417.71
5.029	1665183.45	1677399.83
5.030	1664949.34	1677018.42

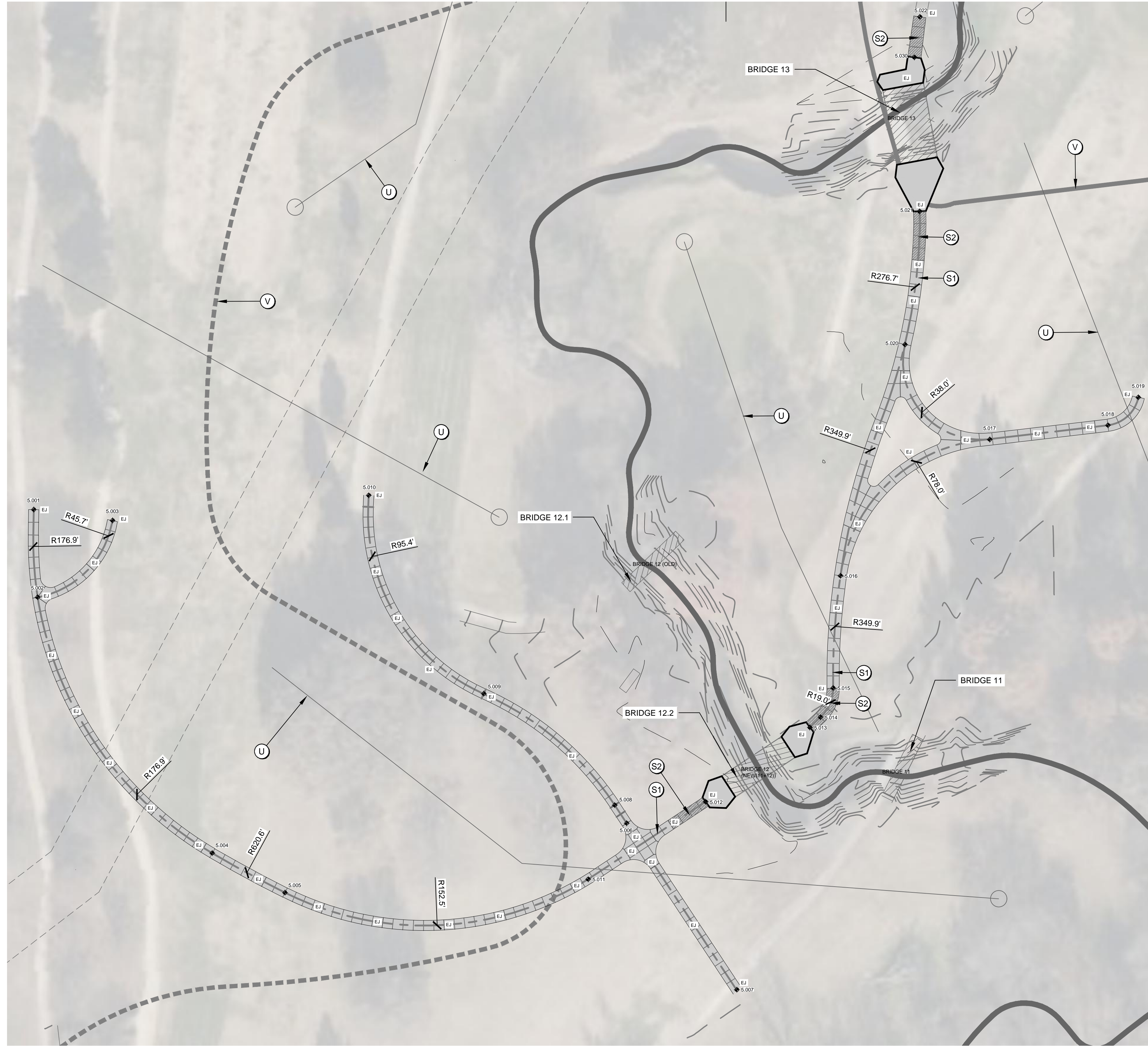


Revision Schedule

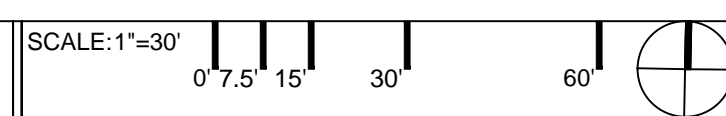
No.	Date	Description

- SITE KEYNOTES:**
- (A) LIMESTONE BLOCK SEATING; RE:01/SP403
 - (B) 32 GAL. TRASH RECEPTACLE(CITY STANDARD); RE:11/SP403
 - (C) INTERPRETIVE SIGNAGE
 1. PLAYGROUND RULES
 2. INTERPRETIVE SIGNAGE PANEL
 3. DOG PARK RULES
 - (D) STAIR CASE; RE:08/SP400
 - (E) LIMESTONE BLOCK RETAINING WALL; RE:10/SP400
 - (F) BIKE RACKS (5); 11/SP403
 - (G) ADA PARKING STALL WITH SIGN; RE:05/SP400
 - (H) NOT USED
 - (I) 5' HT. BLACK CHAIN LINK FENCE; RE:12/SP400
 - (J) 7' WIDE DOUBLE GATE; RE:11/SP400
 - (K) 4' WIDTH DOG PARK ENTRY GATES; RE:13/SP400
 - (L) 6' BENCH(CITY STANDARD); RE:06/SP403
 - (M) WATER FOUNTAIN WITH DOG DRINKING STATION; RE:02/SP403
 - (N) DOG WASTE STATION (CITY STANDARD); RE:05/SP403
 - (O) PROPOSED BRIDGE (NOT IN CONTRACT)
 - (P) PARK MONUMENT SIGN (ADD ALTERNATE 1); RE:08/SP403
 - (Q) 8' PICNIC TABLE(CITY STANDARD); RE:07/SP403
 - (R) CONCRETE PARKING BLOCK (39); RE:04/SP401
 - (S) AREA INLET TO DRAIN OUTSIDE OF PLAYGROUND ZONE
 - (T) 6" PERFORATED DRAINAGE TILE
 - (U) DISC GOLF HOLE LOCATION; TO BE CONFIRMED PRIOR TO CONSTRUCTION
 - (V) EXISTING CROSS COUNTRY ROUTE; TO BE CONFIRMED PRIOR TO CONSTRUCTION

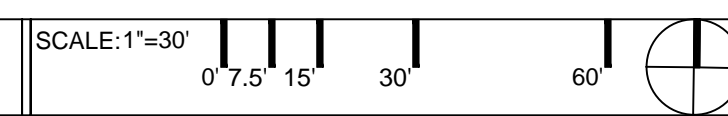
- SURFACING KEYNOTES:**
- (S1) 4" PCC CONCRETE PAVING; RE:01/SP400
 - (S2) 6" PCC CONCRETE PAVING; RE: 02/SP400
 - (S3) ARTIFICIAL TURF; RE:04/SP400
 - (S4) PLAYGROUND SURFACING; RE:05/SP400
 - (S5) 9" WIDTH x 12" DEPTH CONCRETE CURB; RE:06/SP400
 - (S6) DECOMPOSED GRANITE WITH CONCRETE CURB; RE:03/SP400
 - (S7) ASPHALT PAVING; RE:01/SP401
 - (S8) REINFORCED RIBBON CURB; RE:02/SP401



01 LAYOUT PLAN ENLARGEMENT



02 LAYOUT PLAN ENLARGEMENT



L.W. CLAPP PARK
 CITY OF WICHITA
 4611 E HARRY STREET
 WICHITA, KS 67218

Project Number	19305
Issue	100% CONSTRUCTION DOCUMENTS
Date	2024-01-26

LAYOUT PLAN ENLARGEMENT

SP205

THE LINE SHOWN ABOVE IS EXACTLY ONE INCH LONG AT THIS SHEET'S ORIGINAL PLOT SIZE
 THE SQUARE SYMBOLS ARE FOR USE WITH EACH AND WRITE LETTERS IF PRINTED CORRECTLY