

File Location: S:\1-PROJECTS\2019\19305_LW Clapp Park Master Plan\19305_WORKING\AUTOCAD\SHEETS\SP300 GRADING PLAN / SAVE DATE: 4/19/2024 9:28 AM BY: abedum / PLOT DATE: 4/19/2024 9:35 AM BY: Andrew Hiblum

THE LINE SHOWN ABOVE IS EXACTLY ONE INCH LONG AT THIS SHEET'S ORIGINAL PLOT SIZE

THE SQUARE ABOVE IS EXACTLY ONE FOOT ON EACH SIDE. PRINTED CORRECTLY IF PRINTED CORRECTLY

D

C

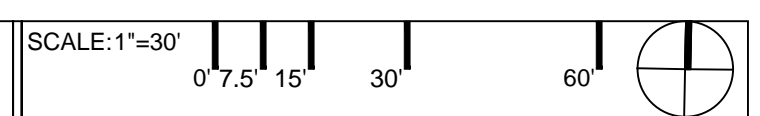
B

A

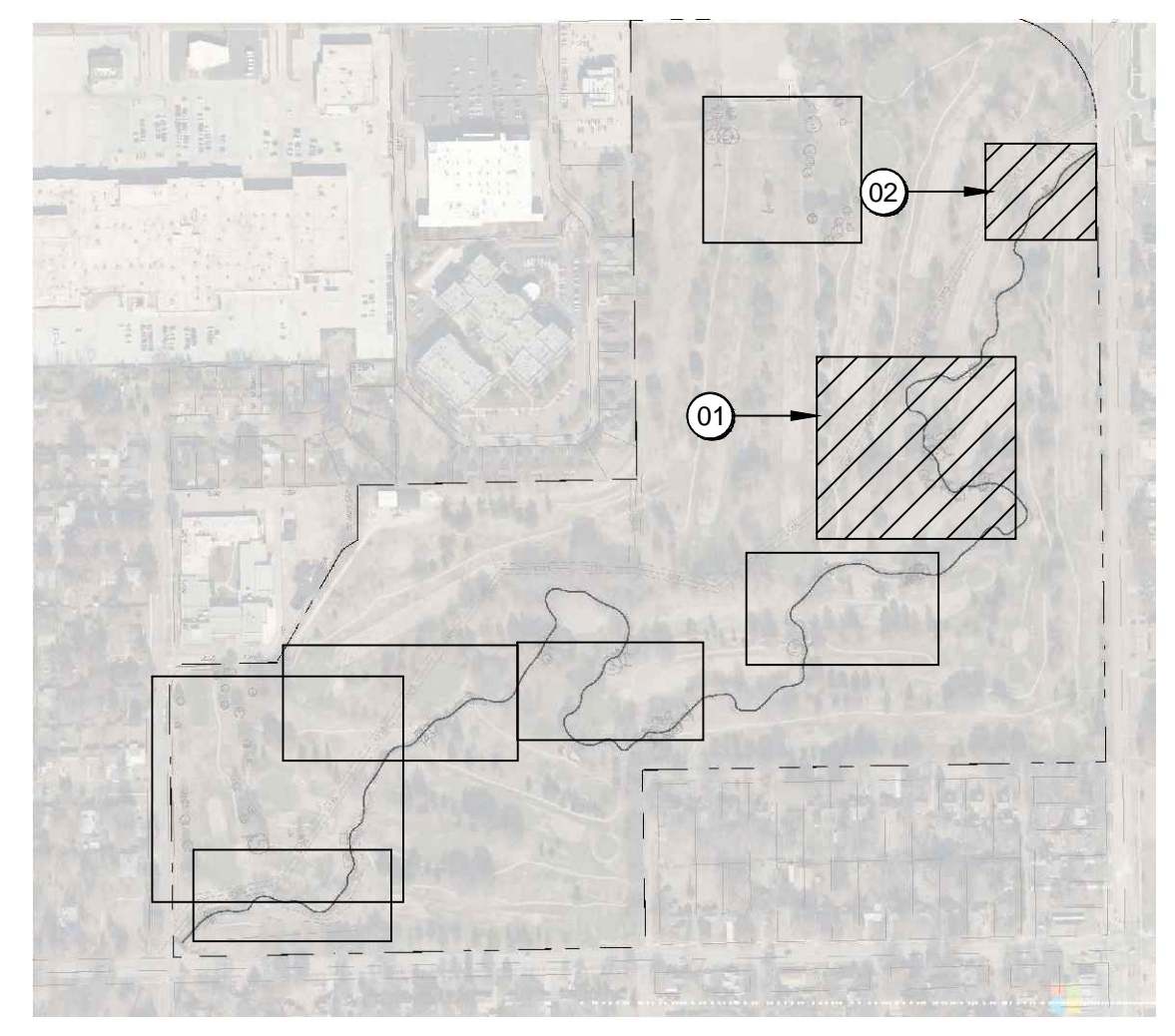


NOTE: PROPOSED SIDEWALK CONNECTION TO BRIDGE CONCRETE TO BE SLOPED TO DRAIN MAX OF 5% IN ROUTE OF TRAVEL WITH A 1.5% MAX CROSS SLOPE.

01 GRADING PLAN ENLARGEMENT



KEYMAP

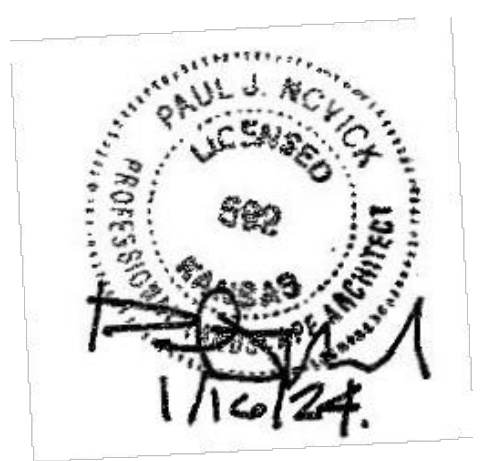


CONFLUENCE

LANDSCAPE ARCHITECT
CONFLUENCE
 417 Delaware Street
 Kansas City, MO 64105
 816.531.7227
 www.thinkconfluence.com

STRUCTURAL ENGINEER
STAND STRUCTURAL ENGINEERING INC.
 8234 ROBINSON STREET
 OVERLAND PARK, KS 66204
 913.214.2169

CIVIL ENGINEER
BAUGHMAN COMPANY, PA
 315 ELLIS STREET
 WICHITA, KS 67211
 316.262.7271



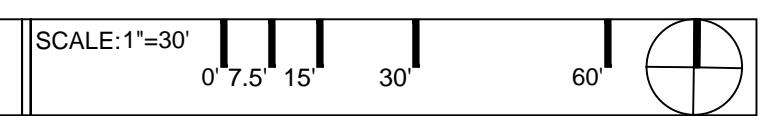
Revision Schedule

| No. | Date | Description |
|-----|------|-------------|
| | | |
| | | |
| | | |
| | | |
| | | |
| | | |
| | | |
| | | |
| | | |
| | | |



NOTE: PROPOSED SIDEWALK CONNECTION TO BRIDGE CONCRETE TO BE SLOPED TO DRAIN MAX OF 5% IN ROUTE OF TRAVEL WITH A 1.5% MAX CROSS SLOPE.

02 GRADING PLAN ENLARGEMENT



L.W. CLAPP PARK
 CITY OF WICHITA
 4611 E HARRY STREET
 WICHITA, KS 67218

| | |
|----------------|-----------------------------|
| Project Number | 19305 |
| Issue | 100% CONSTRUCTION DOCUMENTS |
| Date | 2024-01-26 |

GRADING PLAN ENLARGEMENT

SP305