

File Location: S:\1-PROJECTS\2019\19305\_LW Clapp Park Master Plan\19305\_WORKING\AUTOCAD\SHEETS\SP100 DEMOLITION PLAN / SAVE DATE: 3/11/2024 3:10 PM BY: andsum / PLOT DATE: 4/19/2024 9:32 AM BY: Andrew Holzum

THE SQUARES ABOVE THE COLOR WITH EACH AND WRITE LETTERS IF PRINTED CORRECTLY

THE LINE SHOWN ABOVE IS EXACTLY ONE INCH LONG AT THIS SHEET'S ORIGINAL PLOT SIZE



**KEYNOTES**

- A. TREE TO BE REMOVED
- B. TREE PROTECTION; RE:02/SP100
- C. CONCRETE WALK TO BE REMOVED
- D. BRIDGE TO BE DEMOD (NOT IN CONTRACT)
- E. DEMO SECTION OF CONCRETE CURB
- F. CROSS COUNTRY TRACK (TO BE AVOIDED WHERE POSSIBLE).

**LEGEND**

- GRADING EXTENT BOUNDARY
- ~ EXISTING CURB TO BE REMOVED
- ⊗ TREE TO BE REMOVED
- TREE TO HAVE PROTECTIVE FENCE; RE:02/SP100
- ▨ EXISTING CONCRETE SIDEWALK TO BE REMOVED
- ▧ BRIDGE TO BE REMOVED (NOT IN CONTRACT)
- DISC GOLF HOLE



LANDSCAPE ARCHITECT  
**CONFLUENCE**  
 417 Delaware Street  
 Kansas City, MO 64105  
 816.531.7227  
 www.thinkconfluence.com

STRUCTURAL ENGINEER  
**STAND STRUCTURAL ENGINEERING INC.**  
 8234 ROBINSON STREET  
 OVERLAND PARK, KS 66204  
 913.214.2169

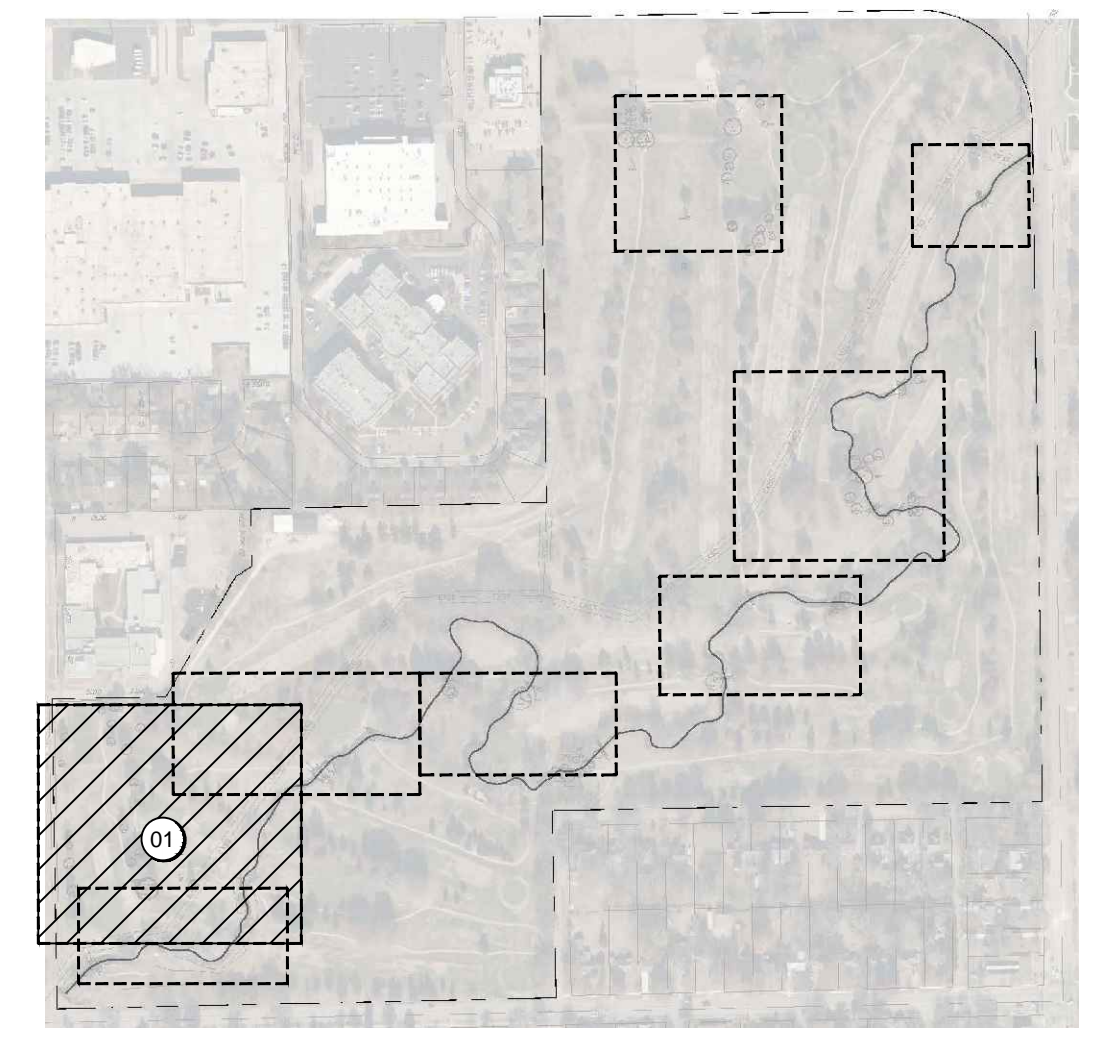
CIVIL ENGINEER  
**BAUGHMAN COMPANY, PA**  
 315 ELLIS STREET  
 WICHITA, KS 67211  
 316.262.7271



**Revision Schedule**

No.	Date	Description

**01** DEMOLITION PLAN ENLARGEMENT



**KEY MAP**

**L.W. CLAPP PARK**  
 CITY OF WICHITA  
 4611 E HARRY STREET  
 WICHITA, KS 67218

Project Number 19305  
 Issue 100% CONSTRUCTION DOCUMENTS  
 Date 2024-01-26

DEMOLITION PLAN  
 ENLARGEMENT

**SP101**