

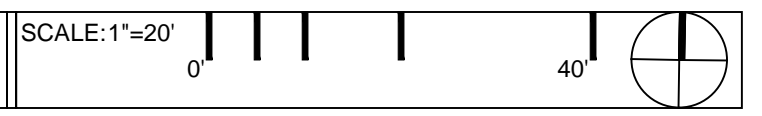
File Location: S:\1-PROJECTS\2019\19305_LW Clapp Park Master Plan\19305_WORKING\AUTOCAD\SHEETS\SP100 DEMOLITION PLAN / SAVE DATE: 3/11/2024 3:10 PM BY: mhodum / PLOT DATE: 4/19/2024 9:32 AM BY: Andrew Holzum

THE LINE SHOWN ABOVE IS EXACTLY ONE INCH LONG AT THIS SHEET'S ORIGINAL PLOT SIZE
THE SQUARES ABOVE ARE FOR THE SQUARES ABOVE THE COLOR WITH EACH AND WRITE LETTERS IF PRINTED CORRECTLY

D
C
B
A

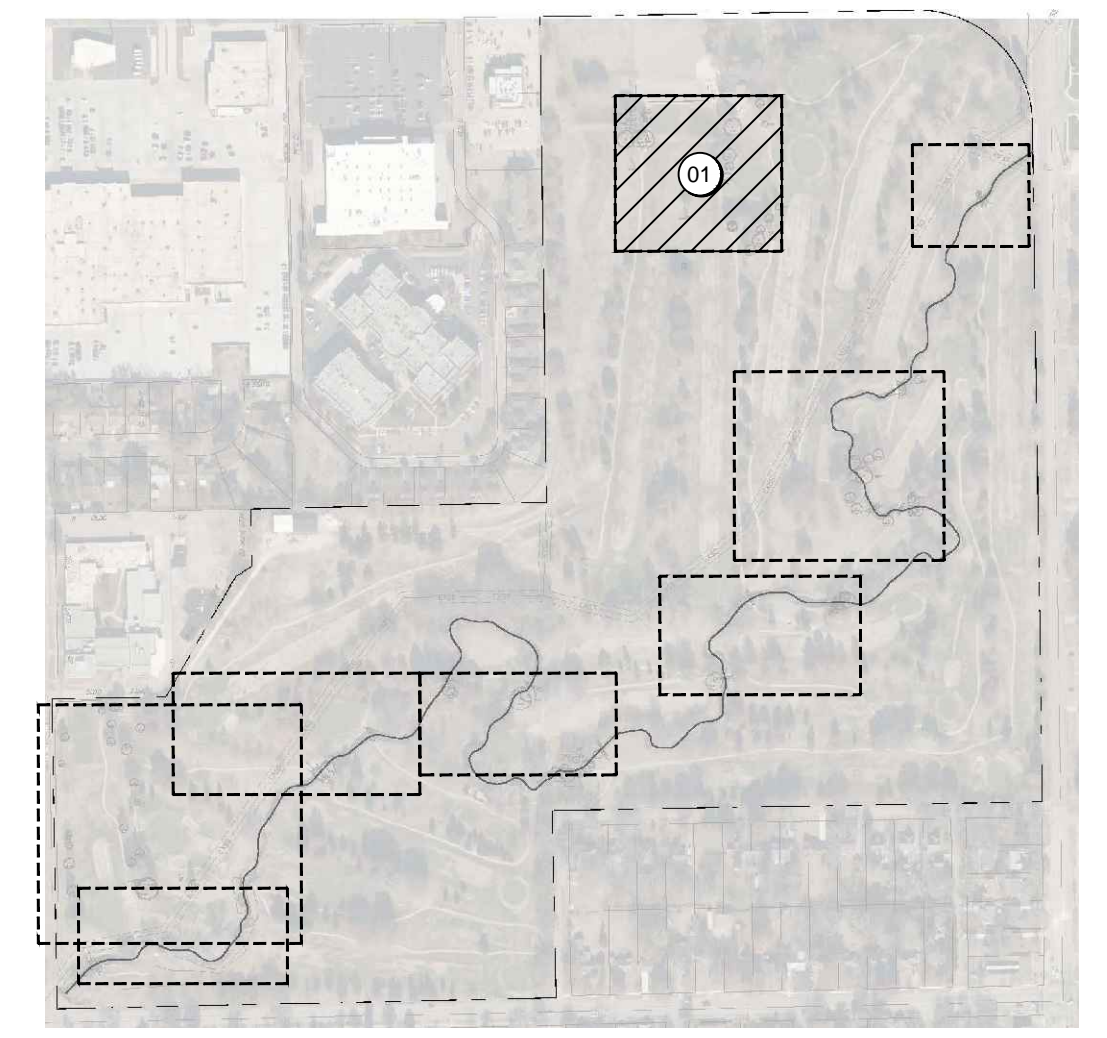


01 DEMOLITION PLAN ENLARGEMENT



- KEYNOTES**
- A. TREE TO BE REMOVED
 - B. TREE PROTECTION; RE:02/SP100
 - C. CONCRETE WALK TO BE REMOVED
 - D. BRIDGE TO BE DEMO'D (NOT IN CONTRACT)
 - E. DEMO SECTION OF CONCRETE CURB
 - F. CROSS COUNTRY TRACK (TO BE AVOIDED WHERE POSSIBLE).

- LEGEND**
- GRADING EXTENT BOUNDARY
 - ~ ~ ~ EXISTING CURB TO BE REMOVED
 - ⊗ TREE TO BE REMOVED
 - TREE TO HAVE PROTECTIVE FENCE; RE:02/SP100
 - ▨ EXISTING CONCRETE SIDEWALK TO BE REMOVED
 - ▧ BRIDGE TO BE REMOVED (NOT IN CONTRACT)
 - DISC GOLF HOLE



KEY MAP

LANDSCAPE ARCHITECT
CONFLUENCE
417 Delaware Street
Kansas City, MO 64105
816.531.7227
www.thinkconfluence.com

STRUCTURAL ENGINEER
STAND STRUCTURAL ENGINEERING INC.
8234 ROBINSON STREET
OVERLAND PARK, KS 66204
913.214.2169

CIVIL ENGINEER
BAUGHMAN COMPANY, PA
315 ELLIS STREET
WICHITA, KS 67211
316.262.7271



Revision Schedule

No.	Date	Description

L.W. CLAPP PARK
CITY OF WICHITA
4611 E HARRY STREET
WICHITA, KS 67218

Project Number	19305
Issue	100% CONSTRUCTION DOCUMENTS
Date	2024-01-26

DEMOLITION PLAN ENLARGEMENT

SP102