

File Location: S:\1-PROJECTS\2019\19305_LW Clapp Park Master Plan\19305_WORKING\AUTOCAD\SHEETS\SP100 DEMOLITION PLAN / SAVE DATE: 3/11/2024 3:10 PM BY: mhodum / PLOT DATE: 4/19/2024 9:35 AM BY: Andrew Holzum

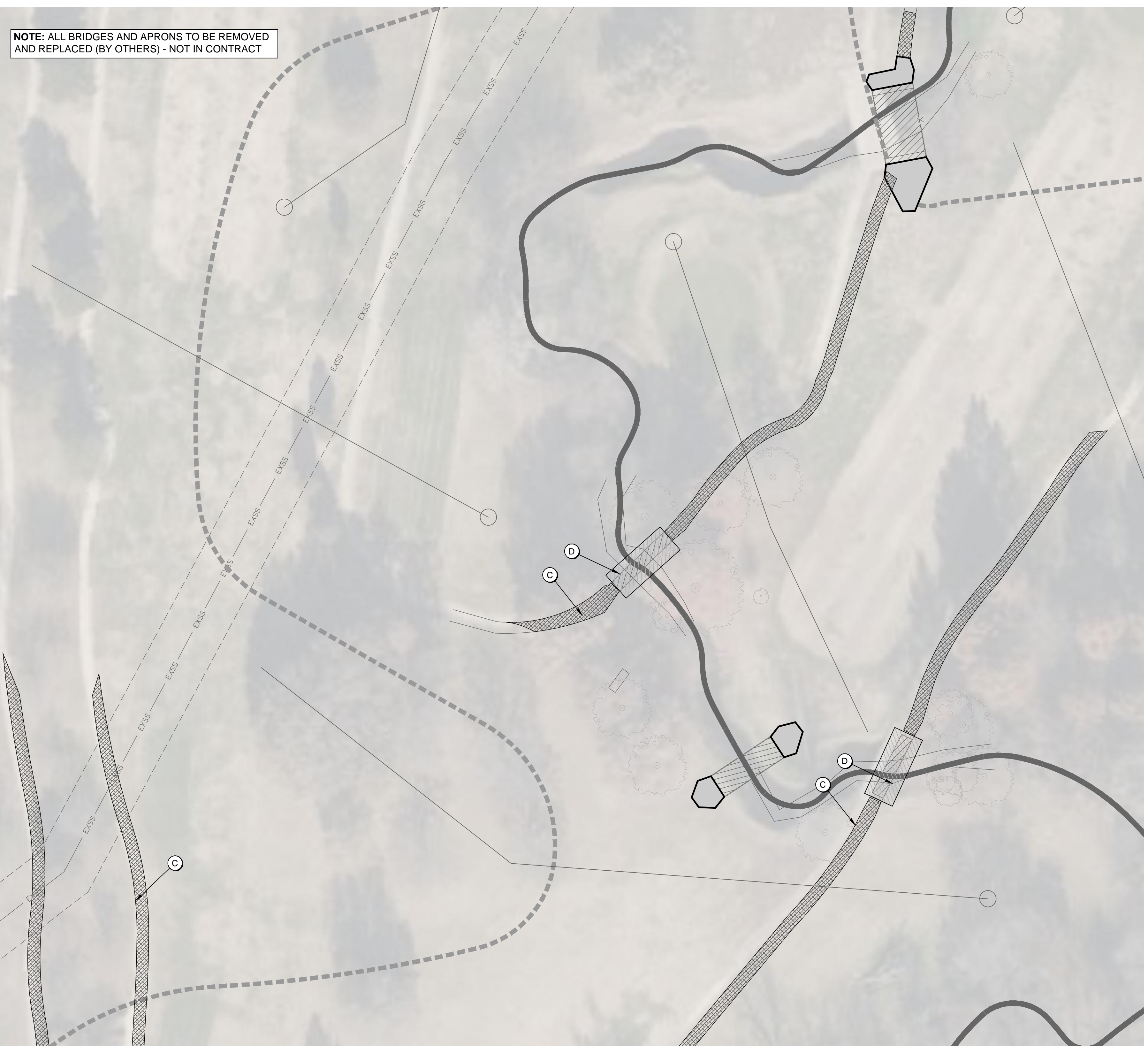
THE LINE SHOWN ABOVE IS EXACTLY ONE INCH LONG AT THIS SHEET'S ORIGINAL PLOT SIZE
THE SQUARE ABOVE THE COLOR WITH EACH AND WHITE LETTERS IF PRINTED CORRECTLY

D

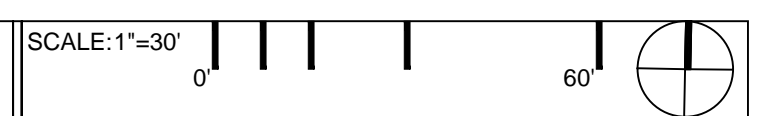
C

B

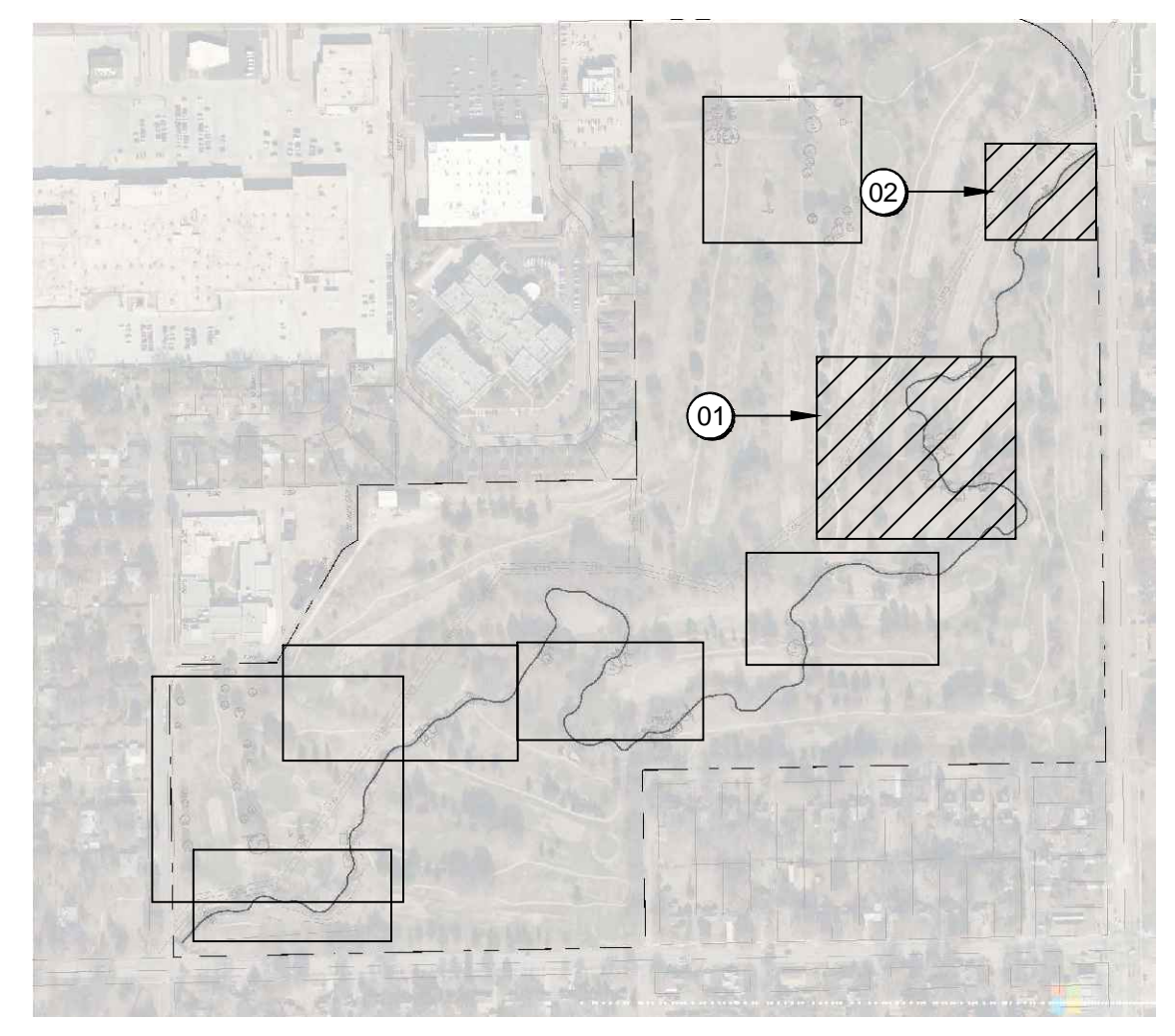
A



01 DEMOLITION PLAN ENLARGEMENT



KEYMAP



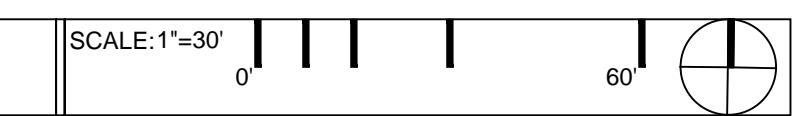
- # KEYNOTES
- A. TREE TO BE REMOVED
 - B. TREE PROTECTION; RE:02/SP100
 - C. CONCRETE WALK TO BE REMOVED
 - D. BRIDGE TO BE DEMO'D (NOT IN CONTRACT)
 - E. DEMO SECTION OF CONCRETE CURB

LEGEND

- - - GRADING EXTENT BOUNDARY
- ~ ~ ~ EXISTING CURB TO BE REMOVED
- ⊗ TREE TO BE REMOVED
- TREE TO HAVE PROTECTIVE FENCE; RE:02/SP100
- ▨ EXISTING CONCRETE SIDEWALK TO BE REMOVED
- ▧ BRIDGE TO BE REMOVED (NOT IN CONTRACT)
- DISC GOLF HOLE



02 DEMOLITION PLAN ENLARGEMENT



LANDSCAPE ARCHITECT
CONFLUENCE
 417 Delaware Street
 Kansas City, MO 64105
 816.531.7227
 www.thinkconfluence.com

STRUCTURAL ENGINEER
STAND STRUCTURAL ENGINEERING INC.
 8234 ROBINSON STREET
 OVERLAND PARK, KS 66204
 913.214.2169

CIVIL ENGINEER
BAUGHMAN COMPANY, PA
 315 ELLIS STREET
 WICHITA, KS 67211
 316.262.7271



Revision Schedule

No.	Date	Description

L.W. CLAPP PARK
 CITY OF WICHITA
 4611 E HARRY STREET
 WICHITA, KS 67218

Project Number	19305
Issue	100% CONSTRUCTION DOCUMENTS
Date	2024-01-26

DEMOLITION PLAN ENLARGEMENT

SP105