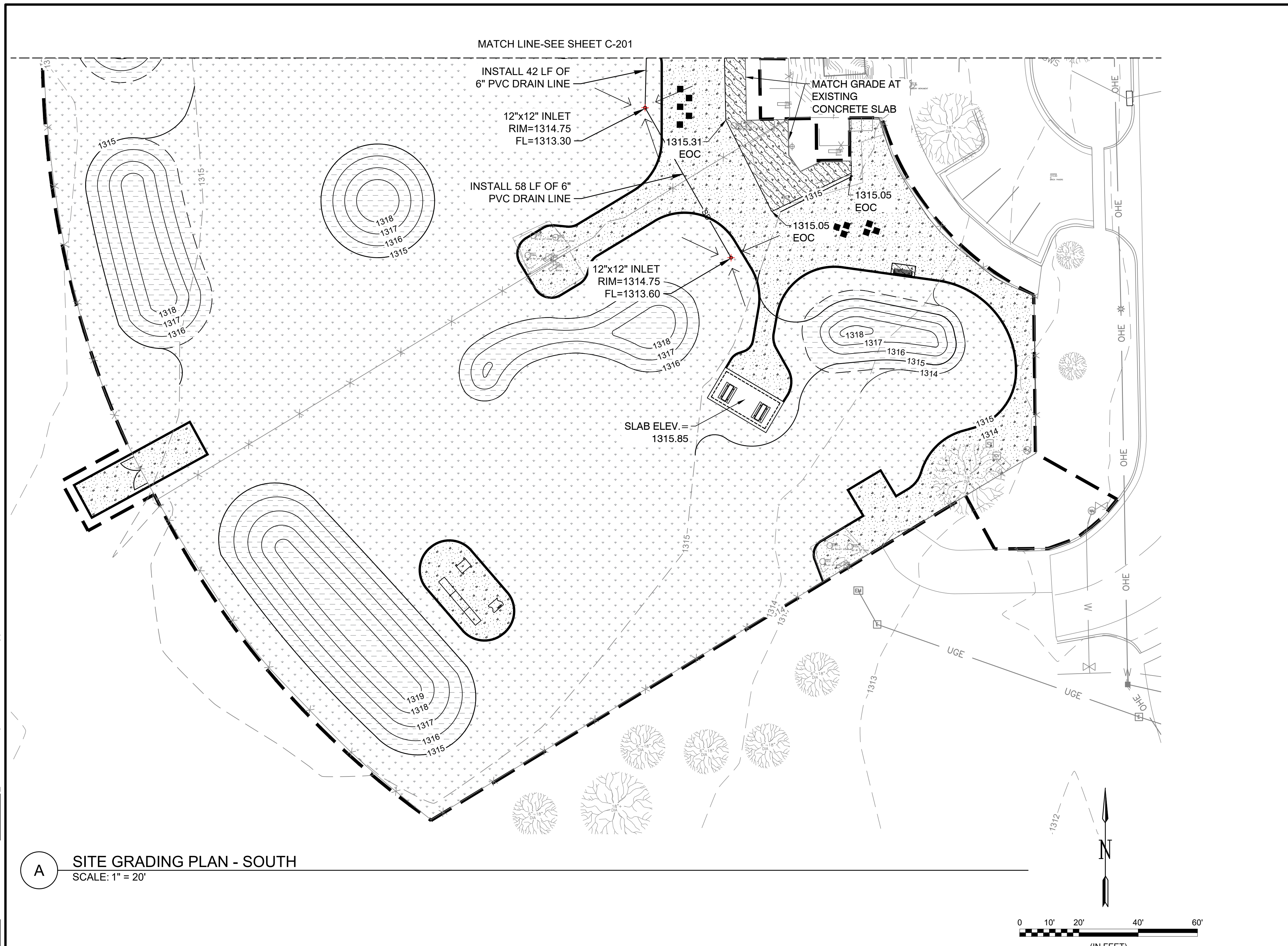
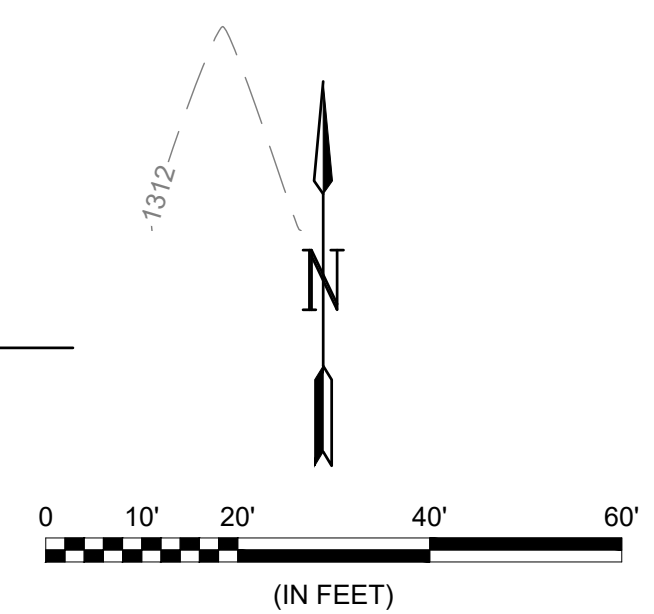


File: L:\2023\F02-2302060 - Meridian Dog Park Enhancements\Drawings\MER-C201 - R.dwg Last Save: 4/10/2024 5:30 PM Last saved by: BDThomas  
 Last plotted by: Gillespie, Bailey I. Plot Style: AEC\_B&W.ctb Plot Scale: 1:1 Plot Date: 4/29/2024 11:40 AM Plotter used: AutoCAD PLOT (General Documentation).pc3



**A** SITE GRADING PLAN - SOUTH  
 SCALE: 1" = 20'



**GENERAL GRADING NOTES**

1. THE CONTRACTOR IS RESPONSIBLE FOR ADEQUATE EROSION CONTROL MEASURES. THESE MEASURES WILL SATISFY THE REQUIREMENTS ADEQ OF AND CAVHS. EROSION CONTROL DEVICES WILL BE MAINTAINED UNTIL PERMANENT GROUND COVER IS ESTABLISHED.
2. REFER TO LANDSCAPE PLAN FOR PERMANENT STABILIZATION. COMPLY WITH THE STANDARDS SET FORTH IN THE THE STANDARD SPECIFICATIONS. SEE LANDSCAPE PLANS/SPECS FOR GROUND COVER REQUIREMENTS.
3. CONTRACTOR SHALL MAINTAIN BENCHMARKS ON SITE UNTIL THE END OF CONSTRUCTION.
4. IT IS INCUMBENT UPON THE CONTRACTOR TO FIELD VERIFY THE EXISTING CONDITIONS PRIOR TO BEGINNING CONSTRUCTION. A TOPOGRAPHIC SURVEY INCLUDING UTILITY ROUTES AND TIE-INS, PAVEMENTS, STRUCTURES, AND GRADES SHALL BE CONDUCTED BY THE CONTRACTOR. SHOULD SIGNIFICANT DISCREPANCIES BE FOUND, IMMEDIATELY NOTIFY THE CONTRACTING OFFICER AND ENGINEER OF RECORD.
5. THE CONTRACTOR IS RESPONSIBLE FOR OBTAINING ALL GRADING RELATED PERMITS PRIOR TO BEGINNING EARTHWORK.
6. ALL STORM PIPES SHALL BE SCH 40 PVC UNLESS OTHERWISE NOTED.
7. UTILITIES SHALL MAINTAIN A 10 FOOT SEPARATION FROM BUILDING FOUNDATIONS.

**AREA INLET INFORMATION**

1. REFER TO DETAIL 4, SHEET C-501 FOR AREA INLET INSTALLATION DETAIL AND OPTIONS FOR INLETS.
2. REFER TO DETAIL 5, SHEET C-501 FOR PIPE EMBEDMENT DETAIL.

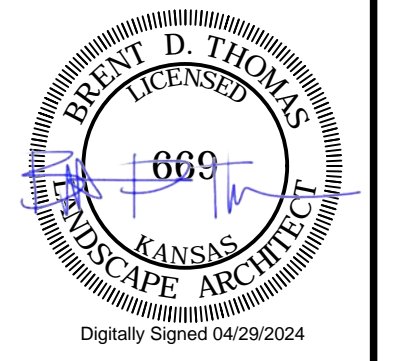
**LEGEND**

× TS	TOP OF SIDEWALK
— 511 —	MINOR CONTOUR
— 510 —	MAJOR CONTOUR
■ CP ■ CP ■ CP ■	CONCRETE STORM DRAIN
— SD —	PROPOSED SOLID PVC DRAIN
— —	LIMITS OF CONSTRUCTION
— 505 —	EXISTING MAJOR CONTOUR
- - -	EXISTING MINOR CONTOUR
□	PROPOSED SEEDED GRASS (90,560 S.F.) REFER TO SHEET L-101 FOR NOTES AND PLANT SCHEDULE
▨	PROPOSED BERMS WITH SEEDED GRASS (30,355 S.F.) REFER TO DETAIL 3/ SHEET L-502
▩	PROPOSED 4" CONCRETE PAVEMENT SURFACE (1,345 S.F.) REFER TO DETAIL 1/ SHEET C-501
▧	PROPOSED PERMEABLE GRAVEL PAVER W/ 3/8" CLEAN CHIPS (14,100 S.F.) REFER TO DETAIL 3/ SHEET L-501



© 2024 GARVER, LLC  
 THIS DOCUMENT, ALONG WITH THE IDEAS AND DESIGNS CONVEYED HEREIN, SHALL BE CONSIDERED INSTRUMENTS OF PROFESSIONAL SERVICE AND ARE PROPERTY OF GARVER, LLC. ANY USE, REPRODUCTION, OR DISTRIBUTION OF THIS DOCUMENT, ALONG WITH THE IDEAS AND DESIGN CONTAINED HEREIN, IS PROHIBITED UNLESS AUTHORIZED IN WRITING BY GARVER, LLC OR EXPLICITLY ALLOWED IN THE GOVERNING PROFESSIONAL SERVICES AGREEMENT FOR THIS WORK.

1995 Midfield Road  
 Wichita, KS 67209  
 (316) 264-8008



REV.	DATE	DESCRIPTION	BY

CITY OF WICHITA  
 DEPT. OF PARK & RECREATION  
 WICHITA, KANSAS  
 2024 PARK FACILITY  
 ENHANCEMENTS-  
 K9 ROOSTER DOG PARK  
 ENHANCEMENTS

SITE GRADING PLAN  
 DOG PARK SOUTH

JOB NO.: 2302060  
 DATE: MAY 2024  
 DESIGNED BY: BDT  
 DRAWN BY: HG

BAR IS ONE INCH ON ORIGINAL DRAWING  
 IF NOT ONE INCH ON THIS SHEET, ADJUST SCALES ACCORDINGLY.

DRAWING NUMBER  
**C-202**

SHEET NUMBER