

**GENERAL SITE NOTES**

- CAUTION: UNDERGROUND UTILITIES LIE WITHIN AND ADJACENT TO THE LIMITS OF CONSTRUCTION. AN ATTEMPT HAS BEEN MADE TO LOCATE THESE UTILITIES ON THE PLANS, HOWEVER ALL EXISTING UTILITIES MAY NOT BE SHOWN AND THE ACTUAL LOCATIONS OF THE UTILITIES MAY VARY FROM LOCATIONS SHOWN. PRIOR TO BEGINNING ANY TYPE OF EXCAVATION, THE CONTRACTOR SHALL MARK THE VISIBLE UTILITIES & THE UTILITIES SHOWN ON THE PLANS IN THE FIELD. THE CONTRACTOR SHALL MAINTAIN THE UTILITY LOCATION MARKING UNTIL THEY ARE NO LONGER NECESSARY.
- DIMENSIONS ARE GIVEN TO BACK OF CURB, CENTER OF STRIPE, FACE OF BUILDING, EDGE OF PAVEMENT, OR PROPERTY LINE.
- COORDINATES GIVEN FOR RADII ARE FROM THE CENTER OF THE RADIUS.
- THE CONTRACTOR IS RESPONSIBLE FOR THE APPROPRIATE BARRICADES AND SAFETY PRECAUTIONS IN ALL EXCAVATED AREAS. EXCAVATED AREAS SHALL BE ADEQUATELY FILLED OR COVERED BY THE CONTRACTOR BEFORE LEAVING THE JOBSITE EACH DAY.
- CONTRACTOR IS RESPONSIBLE FOR DAMAGE TO EXISTING STRUCTURES, PAVEMENTS, PLANT MATERIALS, AND UTILITIES.
- CONTRACTOR SHALL PROVIDE TEMPORARY ACCESS TO THE SITE DURING CONSTRUCTION.
- THE CONTRACTOR SHALL MAINTAIN THE SITE IN AN ORDERLY AND CLEAN FASHION.
- ALL WASTE MATERIALS GENERATED FROM CONSTRUCTION BECOME THE PROPERTY OF THE CONTRACTOR. THE CONTRACTOR SHALL REMOVE THE WASTE MATERIALS FROM THE SITE AND DISPOSE OF IN A LEGAL MANNER.
- ITEMS LABELED AS "PROPOSED" OR "INSTALL" SHALL BE CONSTRUCTED AS INDICATED IN THE CONSTRUCTION DOCUMENTS AS PART OF THIS PROJECT.

**EROSION CONTROL NOTES**

- LIMIT OF THE PROJECT IS APPROXIMATELY 3.2 ACRES. TOTAL AREA DISTURBED BY IMPROVEMENTS IS APPROXIMATELY 65,000 SQ. FT. / 1.49 ACRES. BECAUSE DISTURBED AREA IS OVER 1.0 ACRE, A NOTICE OF INTENT OR STORM WATER POLLUTION PREVENTION PLAN IS REQUIRED.
- GRADING FOR THIS PROJECT WILL BE PERFORMED IN ONE CONTINUOUS OPERATION. CONTRACTOR SHALL CONTACT AND SCHEDULE A FIELD REVIEW OF THE FINAL GRADES WITH CITY STAFF AND/OR REPRESENTATIVE WORKING ON BEHALF OF THE CITY.
- COLLECTING AND DISCHARGING SURFACE WATERS WILL BE THROUGH AN EXTENSION OF EXISTING ON-SITE STORM SEWER. THIS SYSTEM WILL DISCHARGE TO THE EXISTING ON-SITE STORM WATER SEWER SYSTEM.
- EROSION AND SEDIMENT CONTROL MEASURES MUST BE INSTALLED BY THE CONTRACTOR PRIOR TO DISTURBANCE OF THE LAND. THESE MEASURES WILL SATISFY THE REQUIREMENTS OF THE CONTRACT SPECIFICATIONS AND THE KANSAS DEPARTMENT OF HEALTH AND ENVIRONMENT AND SHALL INCLUDE AS A MINIMUM:
  - A. ON DISTURBED PORTIONS OF THE SITE THAT WILL BE LEFT OPEN AND UNMAINTAINED FOR A PERIOD OF MORE THAN 14 CALENDAR DAYS, NO LATER THAN THE NEXT WORKDAY WITH SUITABLE WEATHER CONDITIONS AFTER WORK HAS STOPPED, COVER WITH ANCHORED STRAW MULCHING AT THE RATE OF 2 TONS PER ACRE.
  - B. IN THE OCCASION THAT WIND EROSION BECOMES EVIDENT, THE CONSTRUCTION SITE MUST BE SPRINKLED WITH WATER TO CONTROL DUST.
  - C. VEHICLE TRACKING OF SEDIMENT MUST BE KEPT TO A MINIMUM AND HAUL ROUTES MUST BE CLEANED IF TRACKING BECOMES EXCESSIVE AS DETERMINED BY THE CONTRACTING OFFICER.
- PERMANENT STABILIZATION MUST BE INSTALLED BY THE CONTRACTOR. REFER TO THE SITE LANDSCAPE PLAN.
- ANTICIPATED PROJECT SCHEDULE IS FOR CONSTRUCTION TO BEGIN AFTER RECEIPT OF NOTICE TO PROCEED. INSTALLATION OF PERMANENT VEGETATION COVER WILL BEGIN IMMEDIATELY UPON COMPLETION OF CONSTRUCTION ACTIVITIES. TREES MAY BE PLANTED IN SPRING OR FALL. HOWEVER, SHRUBS SHALL NOT BE PLANTED BETWEEN OCTOBER 15 AND APRIL 15.
- FOLLOW ALL APPLICABLE CITY OF WICHITA EROSION CONTROL PRACTICES. SEE SHEET C-301 FOR EROSION CONTROL DETAILS.
- EROSION CONTROL MUST STAY IN PLACE UNTIL FINAL STABILIZATION IS COMPLETED.

**GENERAL CONSTRUCTION NOTES**

- CONTRACTOR SHALL COORDINATE WITH PARK & RECREATION DEPARTMENT AND PUBLIC WORKS AND UTILITIES DEPARTMENT MAINTENANCE PERSONNEL FOR HELP IN LOCATING EXISTING UNDERGROUND FACILITIES AND UTILITIES.
- THE CONTRACTOR IS RESPONSIBLE FOR LOCATING ALL UTILITIES MARKED OR UNMARKED BEFORE COMMENCING CONSTRUCTION. THE CONTRACTOR SHALL USE EXTREME CARE IN ALL EXCAVATIONS TO AVOID CONFLICTS WITH ALL UTILITIES MARKED OR UNMARKED. THE CONTRACTOR AGREES TO PRESERVE ANY AND ALL UTILITIES AND STRUCTURES WITHIN TWO FEET OF FIELD MARKED UNDERGROUND UTILITIES. CONTRACTOR SHALL CONTACT KANSAS ONE CALL TWO (2) WORKING DAYS PRIOR TO COMMENCEMENT OF CONSTRUCTION ACTIVITIES.
- COMPLY WITH FEDERAL, STATE AND ARMY LAWS AND REGULATIONS.
- THE CONTRACTOR SHALL BE RESPONSIBLE FOR MAINTAINING THE NORMAL OPERATION FUNCTIONS OF ALL UTILITY SYSTEMS OF THE BUILDING THROUGH THE CONSTRUCTION SITE DURING THE ENTIRE DURATION OF THE PROJECT.
- ALL TREES ON-SITE SHALL BE PRESERVED. TREES WITHIN THE WORK LIMITS SHALL HAVE TREE PROTECTION INSTALLED PER DETAILS CONTAINED WITHIN THIS DOCUMENT.
- PROTECT ALL PAVEMENTS ON-SITE FROM SURFACE MARRING OR DAMAGE. USE PLYWOOD WHERE EQUIPMENT WILL BE CROSSING.
- LAYDOWN LOCATION SHOWN ON SITE ACCESS PLAN (THIS SHEET) IS RECOMMENDED. SUBMIT FINAL WORK PLAN WITH LAYDOWN LOCATION AND TRAFFIC CONTROL PLAN TO CITY OF WICHITA FOR APPROVAL PRIOR TO MOBILIZATION.
- ALL TRAFFIC CONTROL DEVICES USED ON ROAD CONSTRUCTION SHALL CONFORM TO AND BE PLACED IN ACCORDANCE WITH THE LATEST EDITION OF THE MANUAL ON UNIFORM TRAFFIC CONTROL DEVICES FOR STREETS AND HIGHWAYS. TWO WAY TRAFFIC SHALL BE MAINTAINED AT ALL TIMES. ONE LANE WITH FLAGGERS, TWO LANES WITHOUT FLAGGERS. CONTRACTOR SHALL USE TRAFFIC DRUMS OR DELINEATOR POSTS TO CHANNELIZE TRAFFIC AS DIRECTED BY THE ENGINEER. ALL TRAFFIC DRUMS SHALL BE PLACED AT 25-FT. O.C. FOR EXTENDED TANGENTS AND AT 10-FT O.C. FOR CURVES, TAPERS, AND NEAR INTERSECTIONS.
- THE CONTRACTOR IS RESPONSIBLE FOR ALL PERMITTING ON THIS PROJECT. A CITY FLOODPLAIN DEVELOPMENT PERMIT WILL BE REQUIRED FOR THE OUTFALL STRUCTURE AS PART OF THIS PROJECT.

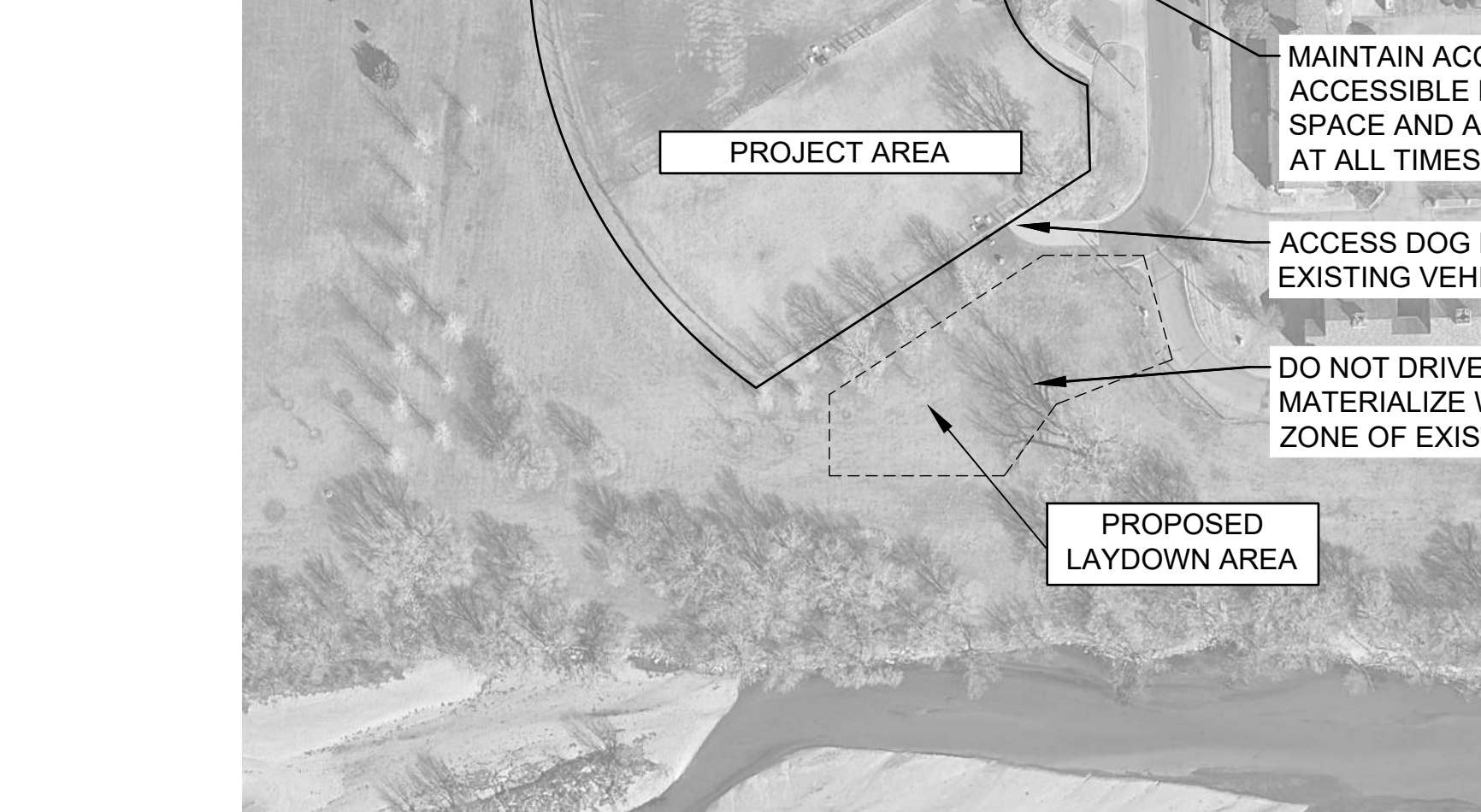
**SPECIAL PROJECT REQUIREMENTS**

K-9 ROOSTER DOG PARK IS LOCATED AT MERIDIAN PARK. MERIDIAN PARK IS A FORMER DUMP SITE. THE SITE HAS A ROUGHLY 12-INCH CAP OVER THE DUMP. THE CAP CONSISTS OF 6 INCHES OF CLAY, FOLLOWED BY 6 INCHES OF TOPSOIL. IN 1997, LOW SPOTS WERE FILLED IN WITH A MIXTURE OF TIRES AND SAND. SINCE 1997, LOCATIONS THROUGHOUT THE DOG PARK MAY HAVE SETTLED OR SHIFTED, PROVIDING A CHANGE IN CAP DEPTH.

THE CITY OF WICHITA MAY ISSUE AN APPLICATION TO THE KANSAS DEPARTMENT OF HEALTH AND ENVIRONMENT (KDHE) TO REOPEN THE CLOSED DUMP. AS A RESULT OF THE FORMER USE, THERE ARE SPECIAL CONSIDERATIONS RELATED TO THE WORK OUTLINED IN THE CONSTRUCTION DOCUMENTS, OF WHICH THE CONTRACTOR NEEDS TO BE AWARE.

- A. METHANE GAS MAY BE PRESENT IF EXCAVATIONS (FOOTING REMOVAL AND/OR FOOTING CONSTRUCTION) PENETRATE THE CAP.
  - a. THE CONTRACTOR AWARDED THIS PROJECT WILL NEED TO COMPLETE A HEALTH AND SAFETY PLAN (HASP) AND SUBMIT IT TO THE CITY OF WICHITA, OFFICE OF ENVIRONMENTAL HEALTH FOR APPROVAL PRIOR TO WORK COMMENCING. THE HASP SHOULD, AT A MINIMUM, ADDRESS HOW METHANE WILL BE MONITORED FOR AND WHAT CONTROLS AND PRACTICES WILL BE USED TO MINIMIZE METHANE RELATED HAZARDS.
- B. ALL EXPOSED WASTE WILL NEED TO BE REMOVED AND DISPOSED OF IN HARMONY WITH FEDERAL, STATE, AND LOCAL REGULATIONS.
  - a. WASTE WILL NEED TO BE DISPOSED OF AT A PERMITTED SOLID WASTE TRANSFER STATION OR MUNICIPAL SOLID WASTE (MSW) LANDFILL. EXCEPTION. WHILE NOT ANTICIPATED TO BE PRESENT, IF HAZARDOUS WASTE IS DISCOVERED, THE WASTE WILL BE LEFT IN PLACE AND THE CITY SHALL BE IMMEDIATELY CONTACTED FOR GUIDANCE.
  - b. WASTE FROM THIS PROJECT SHALL NOT BE COMBINED WITH WASTE FROM ANY OTHER PROJECT PRIOR TO DISPOSAL TO ENSURE ACCURACY IN RECORDING THE AMOUNT OF WASTE REMOVED.
  - c. COPIES OF DISPOSAL RECEIPTS WILL NEED TO BE PROVIDED TO THE CITY TO VERIFY PROPER DISPOSAL METHODS AND WEIGHTS.
- C. SOIL SPOILS WILL NEED TO BE SCREENED TO REMOVE ANY WASTE PRIOR TO REPLACING THE SOIL (BACKFILLING OR SIMILAR).
  - a. SCREENING MESH NEEDS TO BE AROUND 3/8 - 4/5 INCH (10 - 20MM)
  - b. SCREENING SOIL WITH THE TEETH OF HEAVY EQUIPMENT BUCKETS IS NOT PERMISSIBLE.
- D. WORK WILL BE SUBJECT TO INSPECTION BY THE CITY OF WICHITA, OFFICE OF ENVIRONMENTAL HEALTH AND/OR KDHE.
  - a. TO FACILITATE INSPECTION, THE CONTRACTOR WILL NEED TO PROVIDE 24-HOUR NOTICE TO THE OFFICE OF ENVIRONMENTAL HEALTH PRIOR TO STARTING ANY WORK ON THE SITE.

MAINTAIN ACCESS TO DOG PENS AT ALL TIMES. COORDINATE CLOSURES WITH PARK AND RECREATION STAFF.



**A SITE ACCESS PLAN**  
SCALE: NONE

**PROJECT ALTERNATES**

- THIS PROJECT HAS FOUR BID ALTERNATES. THE BASE BID CONDITION AND THE ASSOCIATED ADD ALTERNATES ARE DESCRIBED BELOW.
- ADD ALTERNATE #1**  
BASE BID: REINFORCED STONE CHIP SURFACE TO HAVE A NATURAL EDGE.
- ADD ALTERNATE #1:** ADD 6" WIDE CONCRETE HEADER AS EDGE ALONG ALL REINFORCED STONE CHIP SURFACES WHERE ADJACENT TO TURF.
- ADD ALTERNATE #2**  
BASE BID: NO DOG AGILITY EQUIPMENT PROVIDED.
- ADD ALTERNATE #2:** PROVIDE DOG AGILITY EQUIPMENT IN NORTH AND SOUTH PENS. ALTERNATE WILL INCLUDE INSTALLATION OF THE EQUIPMENT, REINFORCED STONE CHIP SURFACE, AND 6" WIDE CONCRETE HEADER AROUND PERIMETER.
- ADD ALTERNATE #3: IRRIGATION**  
BASE BID: ABANDON MAINLINE AND LATERAL PIPE IN PLACE.
- ADD ALTERNATE #3:** REMOVE MAINLINE AND LATERAL PIPE WHERE EXISTING HEADS ARE BEING REMOVED. BACKFILL AND COMPACT THOSE TRENCHES.
- ADD ALTERNATE #4: PERMEABLE GRAVEL PAVER**  
BASE BID: 3/8" CLEAN CHIP AGGREGATE SURFACE WITH NO REINFORCEMENT.
- ADD ALTERNATE #4:** 3/8" CLEAN CHIP AGGREGATE SURFACE WITH GRAVEL PAVE2 REINFORCEMENT OR APPROVED EQUAL.

**GARVER**  
© 2024 GARVER, LLC  
THIS DOCUMENT, ALONG WITH THE IDEAS AND DESIGNS CONVEYED HEREIN, SHALL BE CONSIDERED INSTRUMENTS OF PROFESSIONAL SERVICE AND ARE PROPERTY OF GARVER, LLC. ANY USE, REPRODUCTION, OR DISTRIBUTION OF THIS DOCUMENT, ALONG WITH THE IDEAS AND DESIGN CONTAINED HEREIN, IS PROHIBITED UNLESS AUTHORIZED IN WRITING BY GARVER, LLC OR EXPLICITLY ALLOWED IN THE GOVERNING PROFESSIONAL SERVICES AGREEMENT FOR THIS WORK.

1995 Midfield Road  
Wichita, KS 67209  
(316) 264-8008

BRENT D. THOMAS  
LICENSED  
669  
KANSAS  
LANDSCAPE ARCHITECT  
Digitally Signed 04/29/2024

REV.	DATE	DESCRIPTION	BY

CITY OF WICHITA  
DEPT. OF PARK & RECREATION  
WICHITA, KANSAS  
2024 PARK FACILITY  
ENHANCEMENTS-  
K9 ROOSTER DOG PARK  
ENHANCEMENTS

**PROJECT GENERAL NOTES AND ACCESS PLAN**

JOB NO.: 2302060  
DATE: MAY 2024  
DESIGNED BY: BDT  
DRAWN BY: HG

BAR IS ONE INCH ON ORIGINAL DRAWING  
IF NOT ONE INCH ON THIS SHEET, ADJUST SCALES ACCORDINGLY.

DRAWING NUMBER  
**G-002**

SHEET NUMBER

File: L:\2023\F02-2302060 - Meridian Dog Park Enhancements\Drawings\MER-G002.dwg Last Save: 4/29/2024 10:32 AM Last saved by: BGlillespie  
Last plotted by: Glillespie, Bailey I. Plot Style: AEC\_B&W.ctb Plot Scale: 1:1 Plot Date: 4/29/2024 11:38 AM Plotter used: AutoCAD PDF (General Documentation).pc3