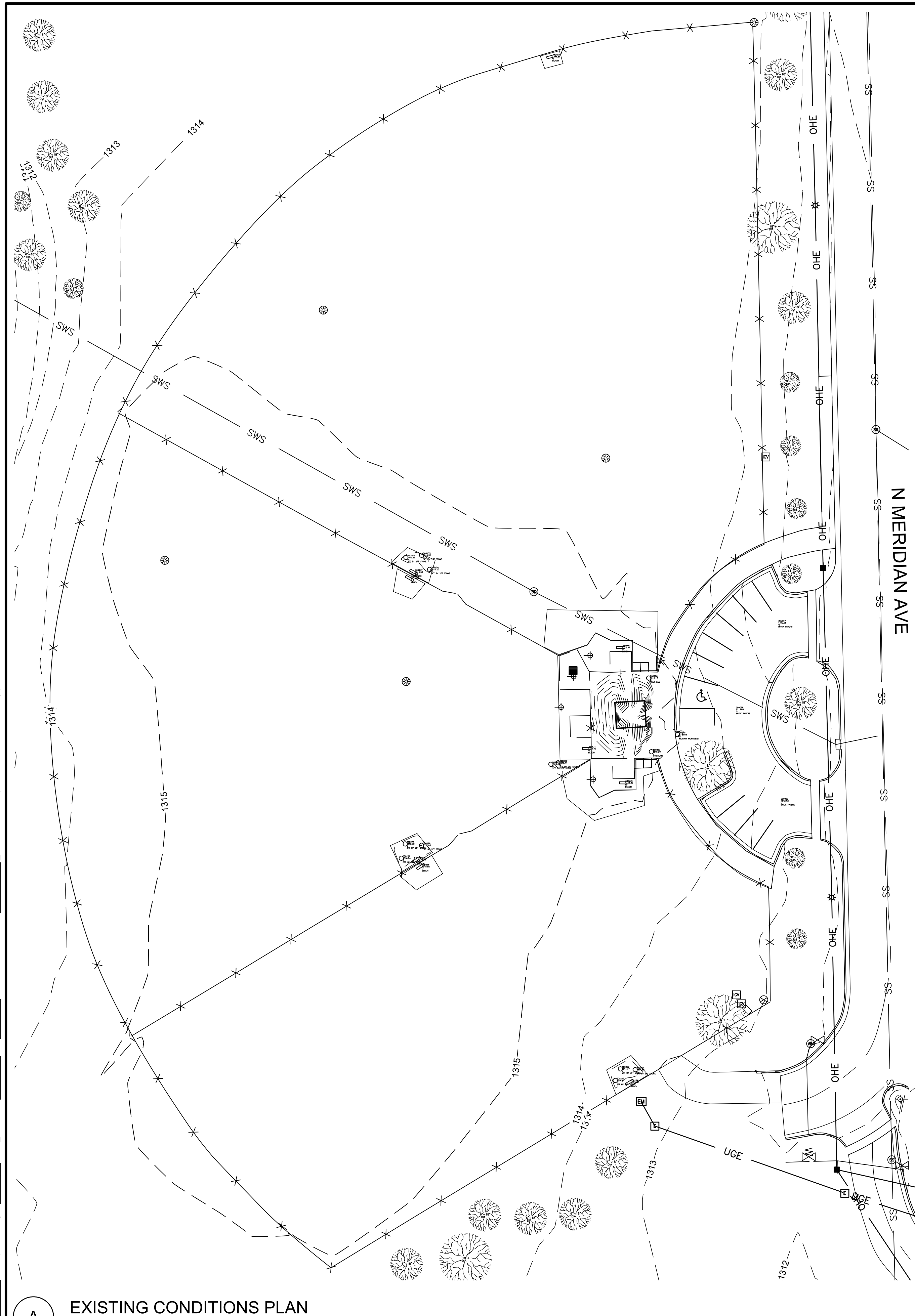


File: L:\2023\F02-2302060 - Meridian Dog Park Enhancements\Drawings\MERI-G003.dwg Last Save: 4/3/2024 8:40 PM Last saved by: BDThomas
 Last plotted by: Gillespie, Bailey I. Plot Style: AEC_B&W.ctb Plot Scale: 1:1 Plot Date: 4/29/2024 11:39 AM Plotter used: AutoCAD PDF (General Documentation).pc3



LEGEND

- SD SD STORMWATER DRAIN
- E E UNDERGROUND ELECTRIC (EVERGY)
- COMM COMM UNDERGROUND TELEPHONE (AT&T)
- G GAS LINE (KANSAS GAS SERVICE)
- GAS METER
- ELECTRIC BOX
- SIGN
- RD ROOF DRAIN
- STORMWATER SEWER CATCH BASIN
- FINISHED FLOOR ELEVATION
- LOCATION OF SPOT ELEVATION
- DECIDUOUS TREE 18" AND ABOVE
- DECIDUOUS TREE 6-18" DIA
- DECIDUOUS TREE 0-6" DIA

UTILITY INFORMATION

KANSAS ONE CALL TICKET NO: 23611539
 AT&T - JASON EDWARDS, JE1682@ATT.COM, 316-268-2008
 COX COMMUNICATIONS - JAMES WALBURN, JAMES.WALBURY@COX.COM, 316-260-7491
 KANSAS GAS SERVICE - SARA PROCTOR, SARA.PROCTOR@ONEGAS.COM, 316-832-3178
 EVERGY - ZACH LAWS - CACHARY.LAWS@EVERGY.COM, 316-261-6264
 WICHITA WATER - JEFF CROSBY, JCROSBY@WICHITA.GOV, 316-268-4555
 WICHITA PARKS AND RECREATION IRRIGATION - JASON GONZALES, 316-350-3171

SURVEY CONTROL

PROJECT SCALE FACTOR: 0.99994176

BENCHMARK AND CONTROL POINT #104
 CHISELED PLUS ON THE TOP OF CURB ON THE
 SOUTH CURB RETURN OF THE NORTH ISLAND ON
 EAST SIDE OF DOG PARK, WEST SIDE OF MERIDIAN.
 ELEVATION = 1311.68 (NAVD88, G12B)
 STATE PLANE COORDINATES:
 N 1698316.086
 E 1638684.891
 MODIFIED GROUND COORDINATES:
 N 1698415.006
 E 1638780.333

CONTROL POINT #100
 24 INCH LONG 1/2 INCH REBAR WITH ORANGE
 GARVER CP CAP
 ELEVATION = 1311.062 (NAVD88, G12B)
 STATE PLANE COORDINATES:
 N 1697986.349
 E 1638756.491
 MODIFIED GROUND COORDINATES:
 N 1698085.247
 E 1638851.937

CONTROL POINT #101
 24 INCH LONG 1/2 INCH REBAR WITH ORANGE
 GARVER CP CAP
 ELEVATION = 1313.690 (NAVD88, G12B)
 STATE PLANE COORDINATES:
 N 1697955.726
 E 1638139.887
 MODIFIED GROUND COORDINATES:
 N 1698054.625
 E 1638235.301

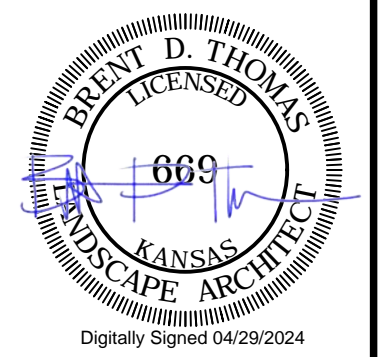
CONTROL POINT #102
 PLUS CUT ON THE TOP OF CURB ON THE NORTH
 SIDE OF W CORNELISON ST AT DEAD END
 ELEVATION = 1314.000 (NAVD88, G12B)
 STATE PLANE COORDINATES:
 N 1698740.309
 E 1638257.069
 MODIFIED GROUND COORDINATES:
 N 1698839.250
 E 1638352.488

CONTROL POINT #103
 PLUS CUT ON THE TOP OF CURB ON THE WEST
 SIDE OF MERIDIAN AND WEST OF NORTH
 ENTRANCE TO PELICAN POINT, BUILDINGS 1-15
 ELEVATION = 1312.680 (NAVD88, G12B)
 STATE PLANE COORDINATES:
 N 1698705.321
 E 1638676.458
 MODIFIED GROUND COORDINATES:
 N 1698804.258
 E 1638771.902



© 2024 GARVER, LLC
 THIS DOCUMENT, ALONG WITH THE
 IDEAS AND DESIGNS CONVEYED
 HEREIN, SHALL BE CONSIDERED
 INSTRUMENTS OF PROFESSIONAL
 SERVICE AND ARE PROPERTY OF
 GARVER, LLC. ANY USE,
 REPRODUCTION, OR DISTRIBUTION
 OF THIS DOCUMENT, ALONG WITH
 THE IDEAS AND DESIGN CONTAINED
 HEREIN, IS PROHIBITED UNLESS
 AUTHORIZED IN WRITING BY
 GARVER, LLC OR EXPLICITLY
 ALLOWED IN THE GOVERNING
 PROFESSIONAL SERVICES
 AGREEMENT FOR THIS WORK.

1995 Midfield Road
 Wichita, KS 67209
 (316) 264-8008



REV.	DATE	DESCRIPTION	BY

CITY OF WICHITA
 DEPT. OF PARK & RECREATION
 WICHITA, KANSAS
 2024 PARK FACILITY
 ENHANCEMENTS-
 K9 ROOSTER DOG PARK
 ENHANCEMENTS

EXISTING
 CONDITIONS PLAN

JOB NO.: 2302060
 DATE: MAY 2024
 DESIGNED BY: BDT
 DRAWN BY: HG

BAR IS ONE INCH ON
 ORIGINAL DRAWING
 IF NOT ONE INCH ON THIS SHEET,
 ADJUST SCALES ACCORDINGLY.

DRAWING NUMBER

G-003

SHEET
 NUMBER

FOR INFORMATION ONLY

A EXISTING CONDITIONS PLAN
 SCALE: 1" = 30'