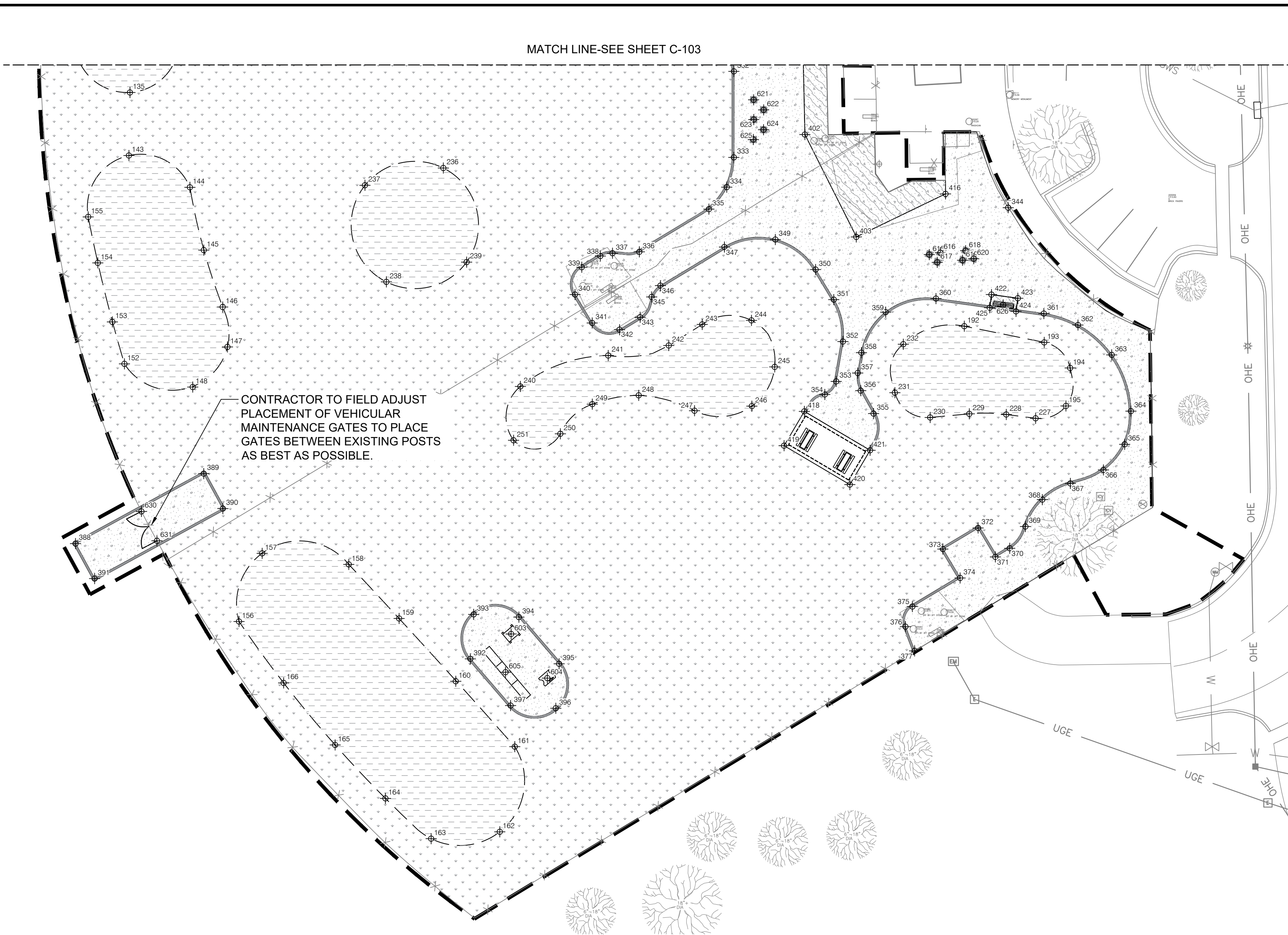


File: L:\2023\F02-2302060 - Meridian Dog Park Enhancements\Drawings\MER-C103.dwg Last Save: 4/10/2024 1:41 PM Last saved by: BThomas  
 Last plotted by: Gillespie, Bailey I. Plot Style: AEC\_B&W.ctb Plot Scale: 1:1 Plot Date: 4/29/2024 11:39 AM Plotter used: AutoCAD PDF (General Documentation).pc3



MATCH LINE-SEE SHEET C-103

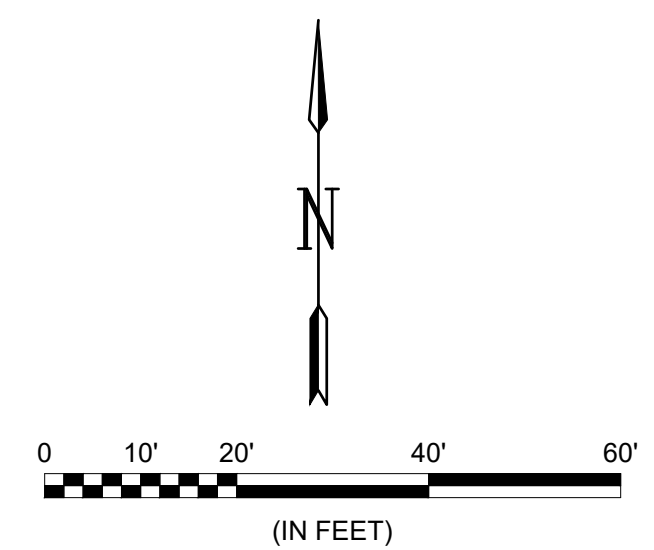
CONTRACTOR TO FIELD ADJUST  
 PLACEMENT OF VEHICULAR  
 MAINTENANCE GATES TO PLACE  
 GATES BETWEEN EXISTING POSTS  
 AS BEST AS POSSIBLE.

**LEGEND**

- PROPOSED SEEDED GRASS (90,560 S.F.)  
REFER TO SHEET L-101 FOR NOTES AND PLANT SCHEDULE
- PROPOSED BERMS WITH SEEDED GRASS (30,355 S.F.)  
REFER TO DETAIL 3/ SHEET L-502
- PROPOSED CONCRETE PAVEMENT SURFACE (1,345 S.F.)  
REFER TO DETAIL 1/ SHEET C-501
- PROPOSED PERMEABLE GRAVEL PAVER W/ 3/8" CLEAN CHIPS (14,100 S.F.)  
REFER TO DETAIL 3/ SHEET L-501

NOTE: SEE SHEET C-105  
 FOR NORTHING/EASTING  
 POINT SCHEDULE

**A** LAYOUT NODE PLAN - DOG PARK SOUTH  
 SCALE: 1" = 20'



**GARVER**  
 © 2024 GARVER, LLC  
 THIS DOCUMENT, ALONG WITH THE  
 IDEAS AND DESIGNS CONVEYED  
 HEREIN, SHALL BE CONSIDERED  
 INSTRUMENTS OF PROFESSIONAL  
 SERVICE AND ARE PROPERTY OF  
 GARVER, LLC. ANY USE,  
 REPRODUCTION, OR DISTRIBUTION  
 OF THIS DOCUMENT, ALONG WITH  
 THE IDEAS AND DESIGN CONTAINED  
 HEREIN, IS PROHIBITED UNLESS  
 AUTHORIZED IN WRITING BY  
 GARVER, LLC OR EXPLICITLY  
 ALLOWED IN THE GOVERNING  
 PROFESSIONAL SERVICES  
 AGREEMENT FOR THIS WORK.

1995 Midfield Road  
 Wichita, KS 67209  
 (316) 264-8008

BRENT D. THOMAS  
 LICENSED  
 669  
 KANSAS  
 LANDSCAPE ARCHITECT  
 Digitally Signed 04/29/2024

REV.	DATE	DESCRIPTION	BY

CITY OF WICHITA  
 DEPT. OF PARK & RECREATION  
 WICHITA, KANSAS  
 2024 PARK FACILITY  
 ENHANCEMENTS-  
 K9 ROOSTER DOG PARK  
 ENHANCEMENTS

LAYOUT NODE PLAN  
 DOG PARK SOUTH

JOB NO.: 2302060  
 DATE: MAY 2024  
 DESIGNED BY: BDT  
 DRAWN BY: HG

BAR IS ONE INCH ON  
 ORIGINAL DRAWING  
 0 1"  
 IF NOT ONE INCH ON THIS SHEET,  
 ADJUST SCALES ACCORDINGLY.

DRAWING NUMBER  
**C-104**

SHEET  
 NUMBER