

GENERAL NOTES:

- The Contractor shall comply with all applicable safety regulations. All construction shall be completed following current City Standard Specifications and Special Provisions.
- Contractor will be required to provide notice to utility companies a minimum of seventy-two (72) hours prior to any excavation, as follows:
 Kansas One-Call 687-2470
 The Contractor must notify the following in case of an emergency:
 Cox Communications 262-4270
 Kansas Gas Service 1-888-482-4950
 Evergy 383-8650
 AT&T 268-2245
 City of Wichita Water Dept. 268-4563
 City of Wichita Sewer Maint. 268-4024
 City of Wichita Storm Sewer Maint. 268-4090
 City of Wichita Traffic Maint. 268-4034
 Conoco Phillips Pipeline Co. 1-877-267-2290
 Southern Star Pipeline Co. 529-6600
 Kinder-Morgan Pipeline Co. 1-888-844-5658

3. Utility service lines, poles, valve boxes, meters, and etcetera are to be adjusted as necessary by others prior to construction unless the plans specifically call for their adjustment by the Contractor or unless the plans specifically identify a utility to be adjusted by its owner during construction. Existing utilities and their location, as shown on the plans, represent the best information obtainable for design. The Contractor will be required to work around existing utilities within the right-of-way which do not conflict with proposed construction.

4. Rubble from the removal of miscellaneous structures and excess excavation which is to be wasted shall be disposed of on sites to be provided by the Contractor. These sites shall be approved by the Engineer as to suitability, appearance and site location. Locations, in the opinion of the Engineer, that will leave an unsightly appearance will not be approved. All disposal sites must be approved by the Kansas Department of Health and Environment. Material either stockpiled or disposed of in a flood plain would require a Kansas State Board of Agriculture permit. Any material dumped in waters of the United States or wetlands is subject to U.S. Corps. of Engineers permitting regulations. Any material buried or stockpiled beyond approved construction limits would require additional archaeological investigations unless buried in a previously approved borrow location.

5. Trees and shrubs in public right-of-way which are in direct conflict with proposed new construction shall be removed by the Contractor with the Engineer's approval. Trees and shrubs which are not in direct conflict with proposed new construction shall be saved and protected from damage.

6. The Contractor shall give all property owners and/or tenants of developed property abutting the construction of this project a minimum of ten (10) days notice prior to start of construction.

7. The Contractor shall be responsible for preserving property irons. The Contractor will be required to re-establish any property irons which are damaged or destroyed by his construction operations. Such irons shall be re-established by a licensed land surveyor in accordance with state laws.

8. The Engineering Division shall field locate water valves one time during construction when requested by the Contractor. It shall be the Contractor's responsibility to preserve such field locations during the construction process. Water valves, valve boxes or fire hydrants damaged during construction shall be repaired by Contractor at his own expense. Valve boxes and water meters within the project limits shall be adjusted to match final grades by the contractor.

9. The Contractor shall notify the inspecting engineer and Dawnita Reinhardt at 316-268-4574 with the City of Wichita with the anticipated construction start date and notify them of project completion. Staking and inspection for this project will be the responsibility of the Contractor.

10. All elevations shown are NAVD 88.

11. All areas disturbed during construction that will not be under proposed pavement shall be restored to match existing conditions.

12. Any sidewalk, drive approach, curb, or street pavement removed to construct project must have a pavement cut permit and be replaced by the City contractor. Permits can be obtained by calling 316-268-4501 or 316-268-4480.

13. All applicable fees (tap, equity, in lieu of & main benefit) must be paid before any connections can be made on this project. Quotes can be obtained on fees by calling 316-268-4555.

14. City Maintenance of sanitary sewer mains ends at last structure within the easement or right-of-way.

15. All stubs and capped pipes shall be located with green plastic tape in the same manner as risers.

16. Connecting to Existing Manholes:
 Prior to laying sewer lines using existing stubs in existing manholes, the Contractor shall expose and verify the elevation, grade and alignment of existing stubs and notify the Engineer of any deviation from the plans. Where the stub is unusable due to elevation grade or alignment, the Contractor shall remove the stub and plug the hole, and reshape the existing manhole invert to provide smooth flow. Where connecting to an existing manhole that does not have an existing stub, the Contractor shall core cut into existing manhole wall to make connection using approved water stop gasket, and reshape the existing manhole invert to provide smooth flow. The cost to connecting to existing manholes is incidental to the project.

17. Contractor shall limit the extent of trench open overnight and weekends to less than 50 feet.

18. Contractor shall provide positive drainage away from all manhole covers.

19. The Contractor shall prevent any construction debris from entering the existing sanitary sewer during construction.

20. The Contractor shall be responsible for maintaining continuous flow of sewage through construction. Contractors proposed method for maintaining sewage flow shall be submitted and approved by the Sewer Maintenance Division (316-268-4073) prior to starting and by-passing of sewage flows.

21. The Contractor shall protect from damage and support existing utilities through construction as approved by the utility owner and the Engineer at the contractors expense.

22. All existing and proposed erosion control measures including silt fencing, erosion control mat, straw bales, inlet barriers, and const. entrance shall be maintained throughout construction by the contractor and until project is accepted by the City of Wichita. The on-site engineer shall complete weekly reports on the status of erosion control measures. The contractor shall be required to comply with maintenance and/or replacement of erosion control measures as determined by the on-site engineer until project is accepted by City of Wichita. Maintenance and/or replacement of erosion control measures to be paid by L.S. bid item "Maintain Existing BMP's."

23. All excess excavation from any construction activities on this project including trench excavation, easement grading or any other activities shall be the responsibility of the contractor to remove from the site at the contractor's expense. No stockpiles nor any other extra payments will be allowed unless explicitly agreed to by the owner.

24. All areas within 159th St. R/W disturbed during construction shall be seeded, mulched, and fertilized as follows: (as indicated on the Stormwater Sewer project.)

SEED -- Kansas Premium Fescue Blend; 8#/1000 Sq. Ft.
 Rye grass (PLS); 3#/1000 Sq. Ft. and
 FERTILIZER -- 12-24-12 Ratio at 45 Lbs./Ac.
 MULCH -- 2 Tons Prairie Hay / Acre

All other disturbed areas are to be seeded as follows:

SEED -- Rye grass (PLS)--5#/1000 Sq. Ft.

All costs associated with seeding including mobilization, preparation of ground, seeding, fertilizing, mulching, etc. shall be included in the L.S. bid item "Seeding".

An additional bid item for "Seeding, Temporary" has been included and may be used at the discretion of the Design Engineer. Temporary seed shall be Annual Rye at 5 Lbs./1000 Sq. Ft. unless otherwise noted and shall be planted when permanent seed or sod cannot be used due to seasonal limitations.

25. Trees and shrubs in the work area which are in direct conflict with proposed new construction shall be removed by the Contractor ONLY with the Developer or Baughman Company approval. Trees and shrubs which are not in direct conflict with proposed new construction shall be saved and protected from damage. If trimming is necessary, a chainsaw shall be used. Breaking limbs with equipment will not be allowed. An on-site pre-construction meeting will occur prior to any construction to discuss tree removal, tree protection, and tree trimming.

26. The Developer for this project is Travis Whisler. 8918 W 21st Street Suite 200 #201 Wichita, KS 67205 PH# (316) 371-4499 Email twcustomhomes@gmail.com

BENCHMARKS

BM #1: CITY OF WICHITA BENCHMARK DISC ON THE WEST END OF THE RCBC HEADWALL, NORTH OF 21ST ST 57'. ELEV. = 1368.37 NAVD88

BM #2: BRASS DISC ON THE TOP OF CURB ON THE EAST SIDE OF CURB INLET, SOUTH SIDE OF FLUTTER LANE, AND NORTH OF LOT 10, BLOCK A, MONARCH LANDING 5TH ADDITION. ELEV. = 1370.97 NAVD88

AS-BUILT PLANS

SANITARY SEWER IMPROVEMENTS

to serve

MONARCH LANDING 6TH ADDITION

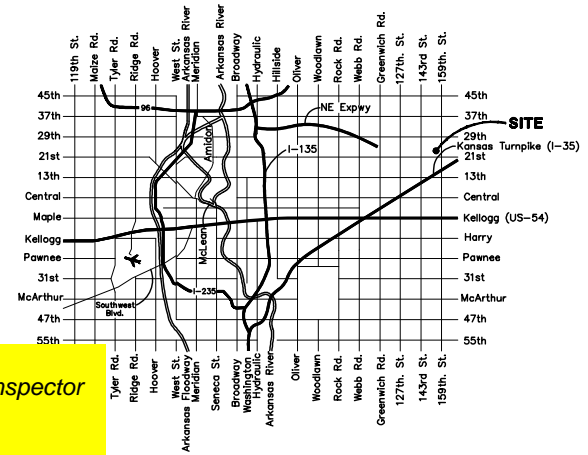
CITY OF WICHITA, KANSAS

Paul Gunzelman, P.E., Interim City Engineer

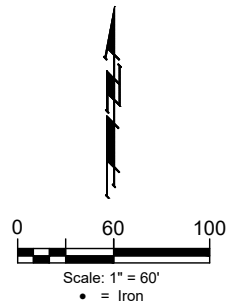
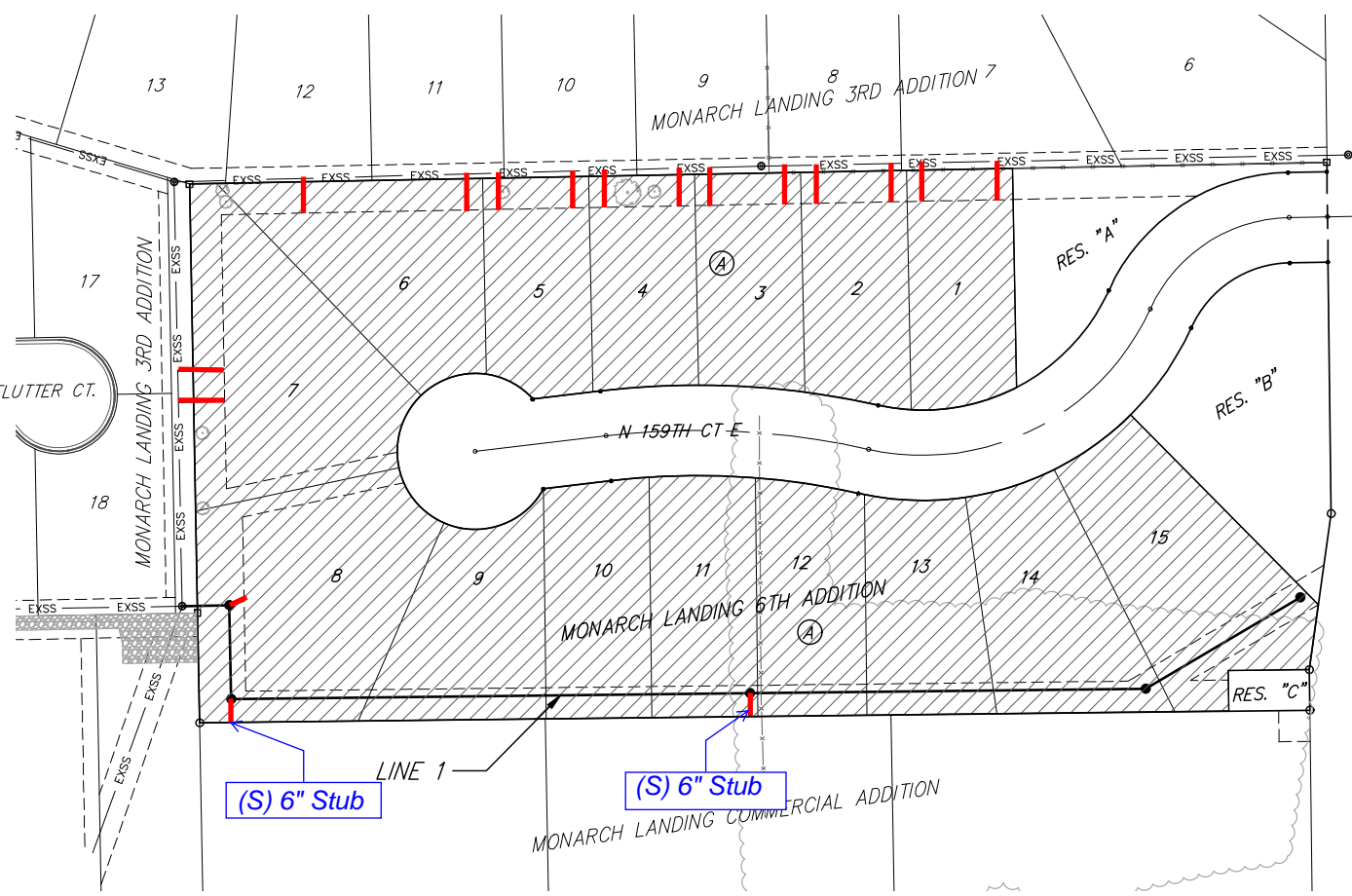
Project Number: 2023-013001 PPS

Org Code: 53030982

D. Reinhardt - City of Wichita, Inspector
 Stubs & Risers
 Release date: 1/4/2024
 : apr 1/11/2024



Vicinity Map



SHEET INDEX

Title Sheet	1
Services	2-3
Line 1	4
Erosion Control Plan	5
Erosion Control BMP Details	6-10
Standard Manhole Detail	11
Frame & Cover Detail	12
Vertical Riser Detail	13
Coordinate Sheet	14
Copy of Plat	15

8" PVC Pipe = 798 L.F.
 4" PVC Pipe = NAPCO = 460 L.F.
 1" PVC Pipe = NAPCO = 180 L.F.
 6" PVC Pipe = NAPCO = 20 L.F.
 SS Manhole Structures = Wichita Concrete Pipe.
 Manhole Frames & Lids = Neenah Foundry.

BENEFIT DISTRICT

Contractor = Mies Construction
Inspector = Fred Smith
Baughman Company
As-Built Plans = FES / LDP, 12-21-2023

Construction Began = September 2023
Construction End = October 2023

APPROVED AS NOTED
 BY WICHITA PUBLIC WORKS
 ENGINEERING DIVISION

Engineering	Shawn Mellies	07/10/23
Utilities	Deb Ary	07/10/23

NOTE TO CONTRACTORS

Inspection and testing for this project is to be provided by a Licensed Consulting Engineering Firm under contract with the Owner/Developer. Said inspection to be in accordance with the City of Wichita standard construction engineering practices and certified by a Licensed Professional Engineer in the state of Kansas. No work shall be performed by the Contractor without such inspection nor shall any work be commenced without written authorization by City Engineering. All Construction and Materials shall comply with the current City of Wichita Specifications and Standards and Special Provisions. (on file and available at Wichita.gov).

An approved copy of these plans signed by City staff are required on-site.



BAUGHMAN JOB NO.: 22-11-E359

June 20, 2023

BAUGHMAN COMPANY
 315 Ellis St. Wichita, KS 67211 316-262-7271
 BaughmanCo.com

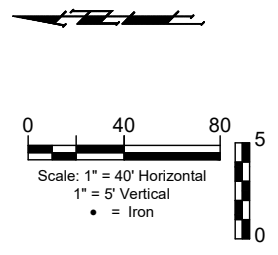
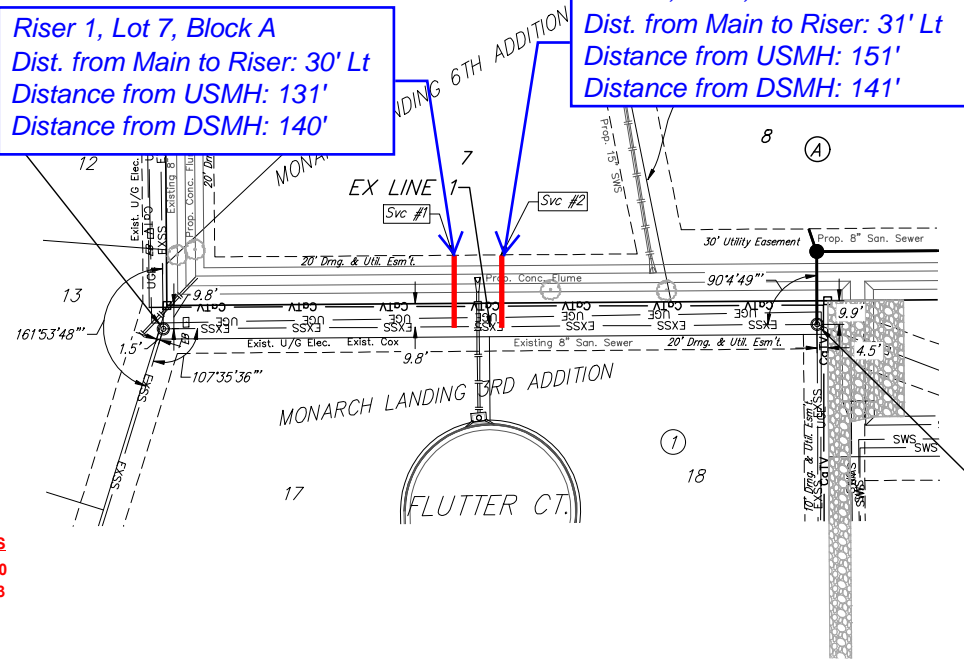
BENCHMARKS:
 BM #1: CITY OF WICHITA
 BENCHMARK DISC ON THE WEST
 END OF THE RCBC HEADWALL,
 NORTH OF 21ST ST 57'.
 ELEV. = 1368.37 NAVD88
 BM #2: BRASS DISC ON THE TOP
 OF CURB ON THE EAST SIDE OF
 CURB INLET, SOUTH SIDE OF
 FLUTTER LANE, AND NORTH OF LOT
 10, BLOCK A, MONARCH LANDING
 5TH ADDITION.
 ELEV. = 1370.97 NAVD88

Sta. 0+00.0, Ex Line 1
 COW MH #6450-109
 Ex. Top Elev. = 1370.84

Riser 1, Lot 7, Block A
 Dist. from Main to Riser: 30' Lt
 Distance from USMH: 131'
 Distance from DSMH: 140'

Riser 2, Lot 7, Block A
 Dist. from Main to Riser: 31' Lt
 Distance from USMH: 151'
 Distance from DSMH: 141'

Sta. 2+72.2, Ex Line 1
 COW MH #6450-112
 Ex. Top Elev. = 1368.20



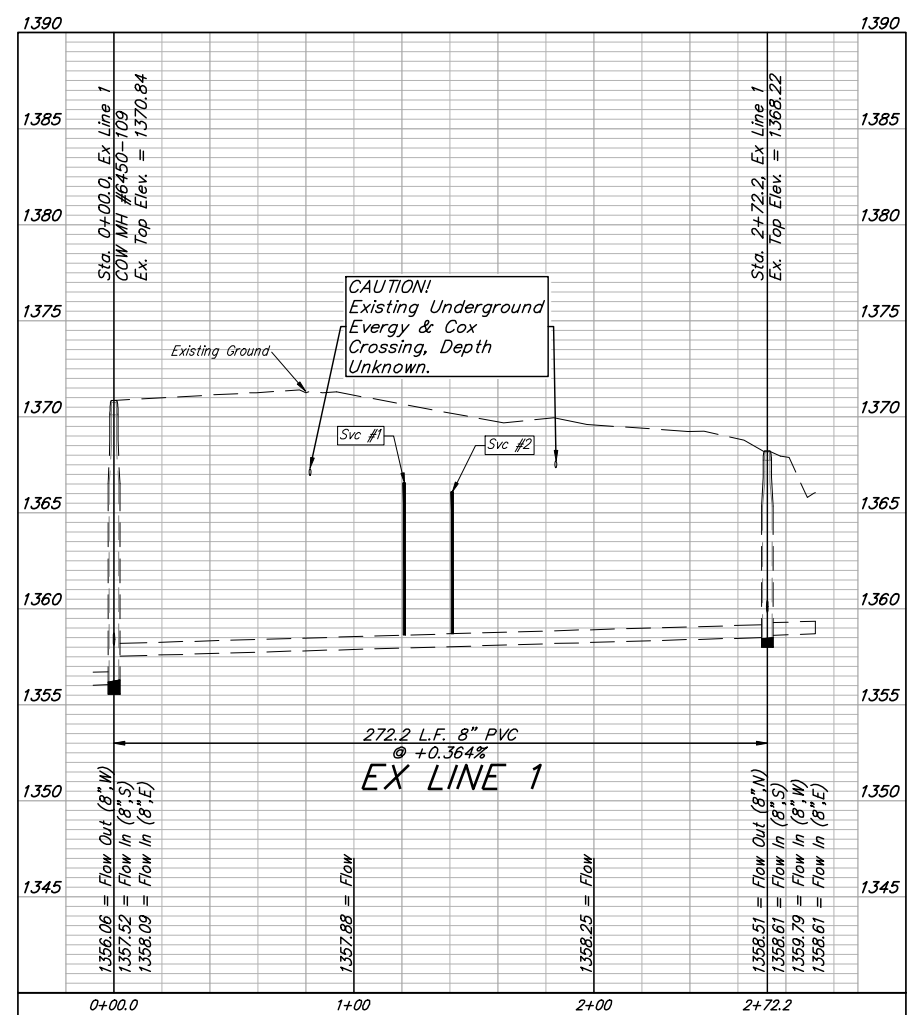
NUMBER	TYPE	LOCATION				FOR INFORMATION ONLY	
		LOT NO.	BLOCK NO.	LINE NO.	STATION/DIRECTION	APPROXIMATE LENGTH 4" PIPE VERTICAL	HORIZONTAL
1	8" X 4" Tee	7	A	EX 1	1+21.00/Lt.	3.6'	29.8'
2	8" X 4" Tee	7	A	EX 1	1+41.00/Lt.	3.6'	29.8'

SERVICE RISER COORDINATES
 SRV#1 N=5,535.276 E=5885.270
 SRV#2 N=5,554.705 E=5886.223

NOTE: Vertical Riser Pipe shall be extended to 2' minimum above ground water elevation and 4' maximum below proposed ground elevation.

Contractor to remove, repair, and replace existing sod and sprinkler lines/heads damaged during construction for any disturbed areas on Lots 17 & 18, Block 1 of Monarch Landing 3rd Addition. All costs shall be included in the L.S. bid item "Site Restoration".

Existing trees which are in direct conflict with proposed new construction shall be removed by the Contractor ONLY with approval of the Engineer. Trees not in direct conflict with proposed new construction shall remain and be protected from damage. Cost shall be included in bid item "Site Clearing".



BAUGHMAN COMPANY
 315 Ellis St.
 Wichita, KS 67211
 316-262-7271
 BaughmanCo.com

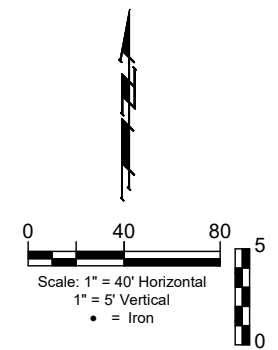
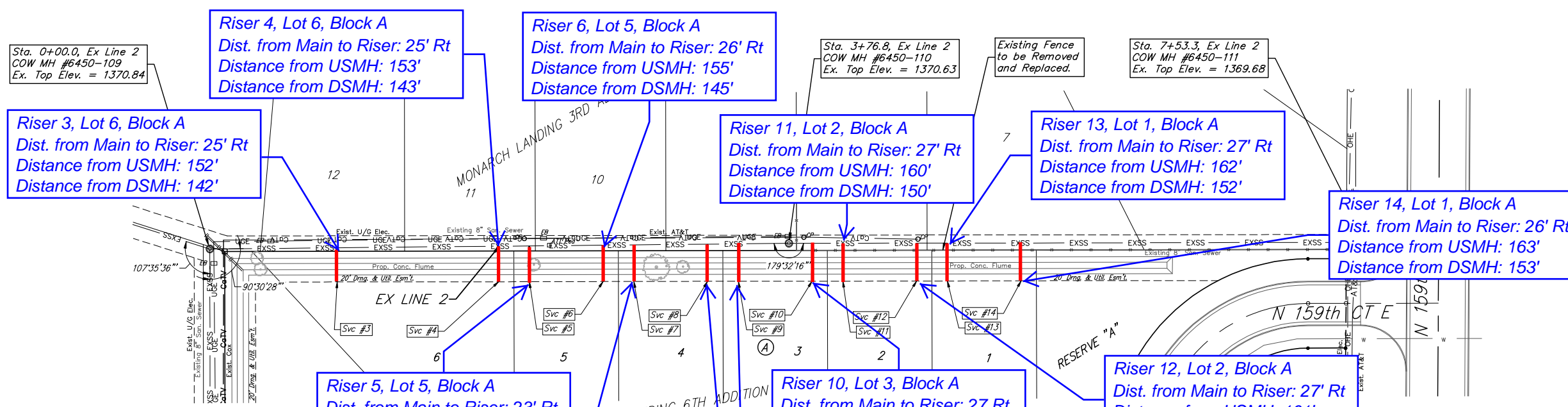
MONARCH LANDING 6TH ADDITION

SERVICES
 SANITARY SEWER IMPROVEMENTS
 PROJECT NUMBER:

DESIGN: NBW DRAWN: AJV
 DATE: June 20, 2023
 SHEET **2** OF **15**

File: E:\Projects\Monarch_Landing 6th Addition_22-08-P828\Engineering\Phase 1\SS 22-11-E359\SS 22-11-E359.dwg

BENCHMARKS:
 BM #1: CITY OF WICHITA
 BENCHMARK DISC ON THE WEST
 END OF THE RCBC HEADWALL,
 NORTH OF 21ST ST 57'.
 ELEV. = 1368.37 NAVD88
 BM #2: BRASS DISC ON THE TOP
 OF CURB ON THE EAST SIDE OF
 CURB INLET, SOUTH SIDE OF
 FLUTTER LANE, AND NORTH OF LOT
 10, BLOCK A, MONARCH LANDING
 5TH ADDITION.
 ELEV. = 1370.97 NAVD88

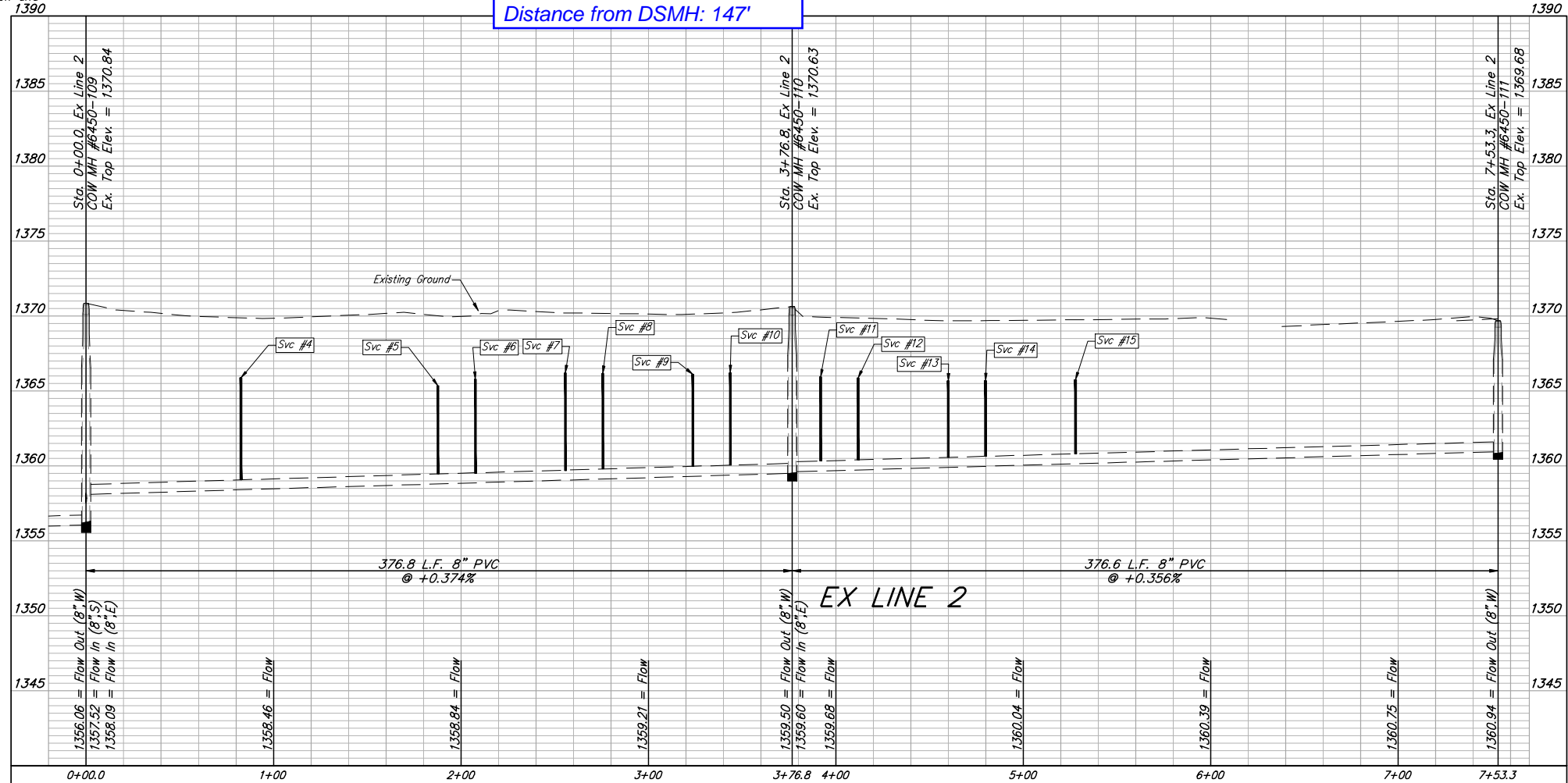


NUMBER	TYPE	LOCATION				FOR INFORMATION ONLY	
		LOT NO.	BLOCK NO.	LINE NO.	STATION/DIRECTION	APPROXIMATE LENGTH 4" PIPE	
3	8" X 4" Tee	6	A	EX 2	0+82.60/Rt.	3.7'	22.0'
4	8" X 4" Tee	6	A	EX 2	1+87.70/Rt.	3.9'	23.1'
5	8" X 4" Tee	5	A	EX 2	2+07.70/Rt.	3.7'	23.2'
6	8" X 4" Tee	5	A	EX 2	2+55.70/Rt.	3.7'	23.6'
7	8" X 4" Tee	4	A	EX 2	2+75.70/Rt.	3.6'	23.8'
8	8" X 4" Tee	4	A	EX 2	3+23.70/Rt.	3.5'	24.2'
9	8" X 4" Tee	3	A	EX 2	3+43.70/Rt.	3.5'	24.3'
10	8" X 4" Tee	3	A	EX 2	3+91.90/Rt.	3.2'	24.6'
11	8" X 4" Tee	2	A	EX 2	4+11.90/Rt.	3.3'	24.6'
12	8" X 4" Tee	2	A	EX 2	4+59.90/Rt.	3.1'	24.6'
13	8" X 4" Tee	1	A	EX 2	4+79.90/Rt.	3.1'	24.6'
14	8" X 4" Tee	1	A	EX 2	5+27.90/Rt.	3.2'	24.6'

SERVICE RISER COORDINATES
 SRV #3 N=5,652.662 E=5935.744
 SRV #4 N=5,655.020 E=6042.182
 SRV #5 N=5,657.262 E=6062.573
 SRV #6 N=5,655.627 E=6109.924
 SRV #7 N=5,656.411 E=6128.858
 SRV #8 N=5,656.771 E=6177.560
 SRV #9 N=5,657.710 E=6196.870
 SRV #10 N=5,659.013 E=6245.749
 SRV #11 N=5,659.314 E=6268.326
 SRV #12 N=5,659.410 E=6313.809
 SRV #13 N=5,660.669 E=6335.946
 SRV #14 N=5,662.449 E=6380.988

NOTE: Vertical Riser Pipe shall be extended to 2' minimum above ground water elevation and 4' maximum below proposed ground elevation.

Existing trees which are in direct conflict with proposed new construction shall be removed by the Contractor ONLY with approval of the Engineer. Trees not in direct conflict with proposed new construction shall remain and be protected from damage. Cost shall be included in bid item "Site Clearing"



BAUGHMAN COMPANY
 315 Ellis St.
 Wichita, KS 67211
 316-262-7271
 BaughmanCo.com

MONARCH LANDING 6TH ADDITION
SERVICES
 SANITARY SEWER IMPROVEMENTS
 PROJECT NUMBER:
 DESIGN: NBW DRAWN: AJV
 DATE: June 20, 2023
 SHEET **3** OF **15**

File: E:\Projects\Monarch Landing 6th Addition_22-08-P828\Engineering\SS 22-1-E359.dwg

BENCHMARKS:
 BM #1: CITY OF WICHITA
 BENCHMARK DISC ON THE WEST
 END OF THE RCBC HEADWALL,
 NORTH OF 21ST ST 57'.
 ELEV. = 1368.37 NAVD88
 BM #2: BRASS DISC ON THE TOP
 OF CURB ON THE EAST SIDE OF
 CURB INLET, SOUTH SIDE OF
 FLUTTER LANE, AND NORTH OF LOT
 10, BLOCK A, MONARCH LANDING
 5TH ADDITION.
 ELEV. = 1370.97 NAVD88

Riser 15, Lot 8, Block A
 Dist. from Main to Riser: 10' Lt
 Distance from USMH: @ mh
 Distance from DSMH: @ mh

Sta. 0+00.0, Begin Line 1
 COW MH #6450-112
 Connect to Existing Manhole
 and Extend 8" Pipe East.
 Core New Openings, Seal and
 Grout Around New Pipe Using
 Non-Shrink Grout. Re-Shape
 Invert As Necessary. Cost of
 Coring, Sealing, Grouting,
 and Re-Shaping Invert to be
 Incidental to "Connect to
 Existing" Bid Item.
 Ex. Top Elev. = 1368.22

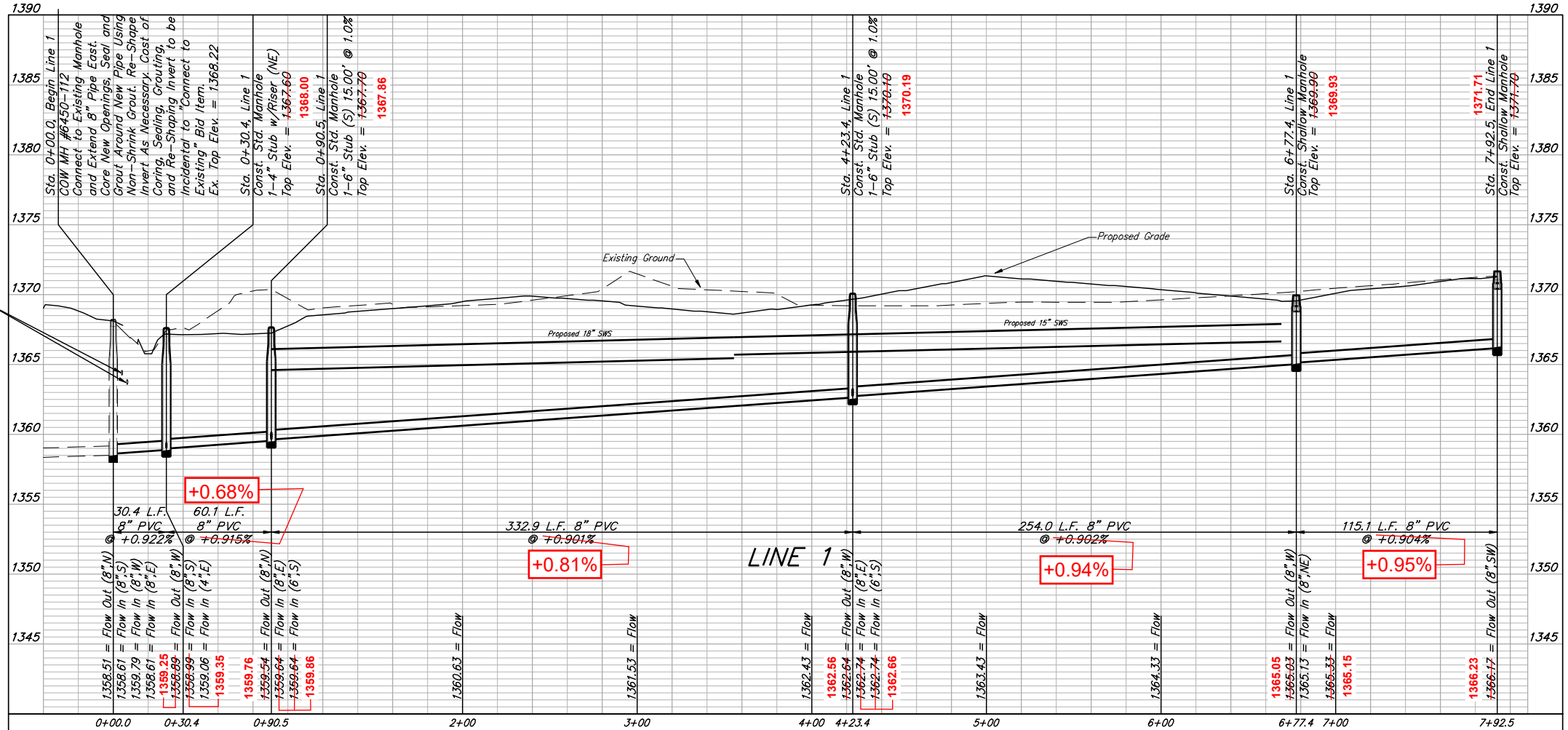
NUMBER	TYPE	LOCATION				FOR INFORMATION ONLY	
		LOT NO.	BLOCK NO.	LINE NO.	STATION/ DIRECTION	APPROXIMATE LENGTH 4" PIPE VERTICAL	HORIZONTAL
15	4" Stub	B	A	1	0+30.38/Lt.	4.4'	10.0'

NOTE: Vertical Riser Pipe shall be extended to 2' minimum above ground water elevation and 4' maximum below proposed ground elevation.

Existing trees which are in direct conflict with proposed new construction shall be removed by the Contractor ONLY with approval of the Engineer. Trees not in direct conflict with proposed new construction shall remain and be protected from damage. Cost shall be included in bid item "Site Clearing"

CAUTION!
 Existing Underground
 Evey & Cox
 Crossing, Depth
 Unknown.

- 1366.23
- 1365.107
- 1362.613
- 1369.8
- 1368.979
- 1359.815
- 1359.304

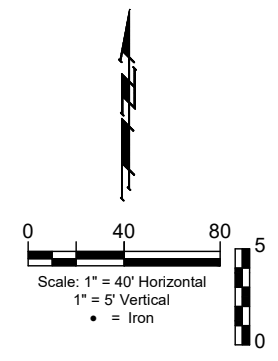


Sta. 0+90.5, Line 1
 Const. Std. Manhole
 1-6" Stub (S) 15.00' @ 1.0%
 Top Elev. = 1367.79 1367.86
 N=5,342.666 E=5890.303
 STUB: N=5,327.176 E=5889.809

Sta. 4+23.4, Line 1
 Const. Std. Manhole
 1-6" Stub (S) 15.00' @ 1.0%
 Top Elev. = 1370.19 1370.19
 N=5,347.546 E=6222.320
 STUB: N=5,333.302 E=6220.862

Sta. 6+77.4, Line 1
 Const. Shallow Manhole
 Top Elev. = 1369.99 1369.93
 N=5,350.308 E=6475.984

Sta. 7+92.5, End Line 1
 Const. Shallow Manhole
 Top Elev. = 1371.70 1371.71
 N=5,407.978 E=6,574.597



BRENT WOOLEN
 LICENSED
 8470
 06/20/2023
 KANSAS
 PROFESSIONAL ENGINEER

B

**BAUGHMAN
 COMPANY**

315 Ellis St.
 Wichita, KS 67211
 316-262-7271
 BaughmanCo.com

MONARCH LANDING 6TH
 ADDITION

LINE 1

SANITARY SEWER
 IMPROVEMENTS

PROJECT NUMBER:

DESIGN: NBW DRAWN: AJV
 DATE: June 20, 2023

SHEET 4 OF 15

File: E:\Projects\Monarch Landing 6th Addition_22-08-P828\Engineering\Phase 1\SS 22-11-E359\SS 22-11-E359.dwg