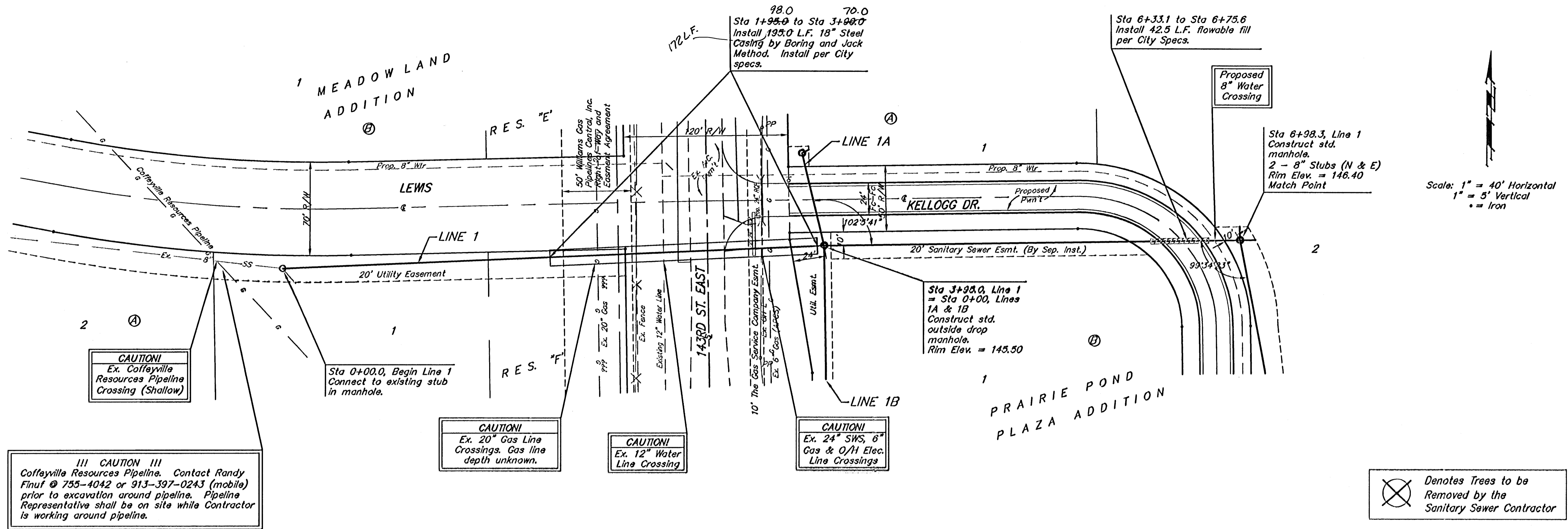


BENCHMARK:
 "□" cut on traffic signal
 light pole base, NW corner
 of Kellogg & 143rd Street
 East.
 Elev. = 1318.61 NGVD
 (131.21 City Datum)



CAUTION
 Ex. Coffeyville
 Resources Pipeline
 Crossing (Shallow)

CAUTION
 Ex. 20" Gas Line
 Crossings. Gas line
 depth unknown.

CAUTION
 Ex. 12" Water
 Line Crossing

CAUTION
 Ex. 24" SWS, 6"
 Gas & O/H Elec.
 Line Crossings

CAUTION
 Ex. Coffeyville
 Resources Pipeline
 Crossing (Shallow)

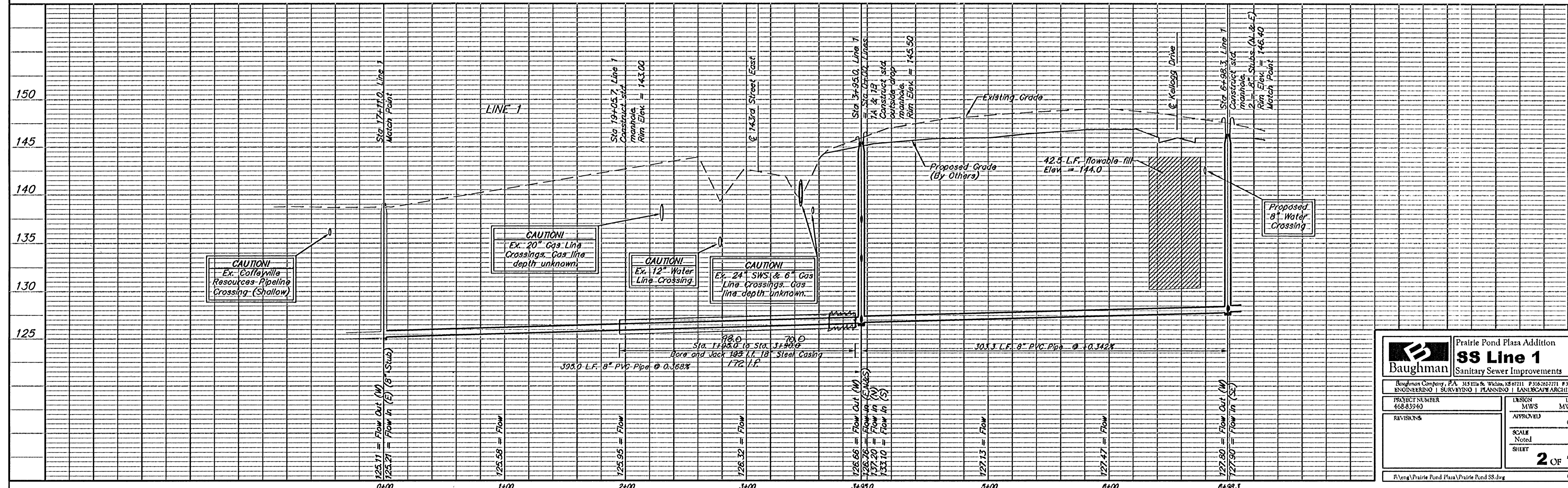
CAUTION
 Ex. 20" Gas Line
 Crossings. Gas line
 depth unknown.

CAUTION
 Ex. 12" Water
 Line Crossing

CAUTION
 Ex. 24" SWS, 6"
 Gas & O/H Elec.
 Line Crossings

Denotes Trees to be
 Removed by the
 Sanitary Sewer Contractor

Scale: 1" = 40' Horizontal
 1" = 5' Vertical
 • = Iron



		Prairie Pond Plaza Addition SS Line 1 Sanitary Sewer Improvements	
<small>Baughman Company, P.A. 315 Ellis & Wilson, 1287111 P316262771 P316262749 ENGINEERING SURVEYING PLANNING LANDSCAPE ARCHITECTURE</small>			
PROJECT NUMBER 468-83940	DESIGN MWS	DRAWN MWS/TMS	DATE 08/05
REVISIONS	APPROVED	SCALE Noted	SHEET 2 OF 11
<small>P:\eng\Prairie Pond Plaza\Prairie Pond SS.dwg</small>		<small>0505E246</small>	