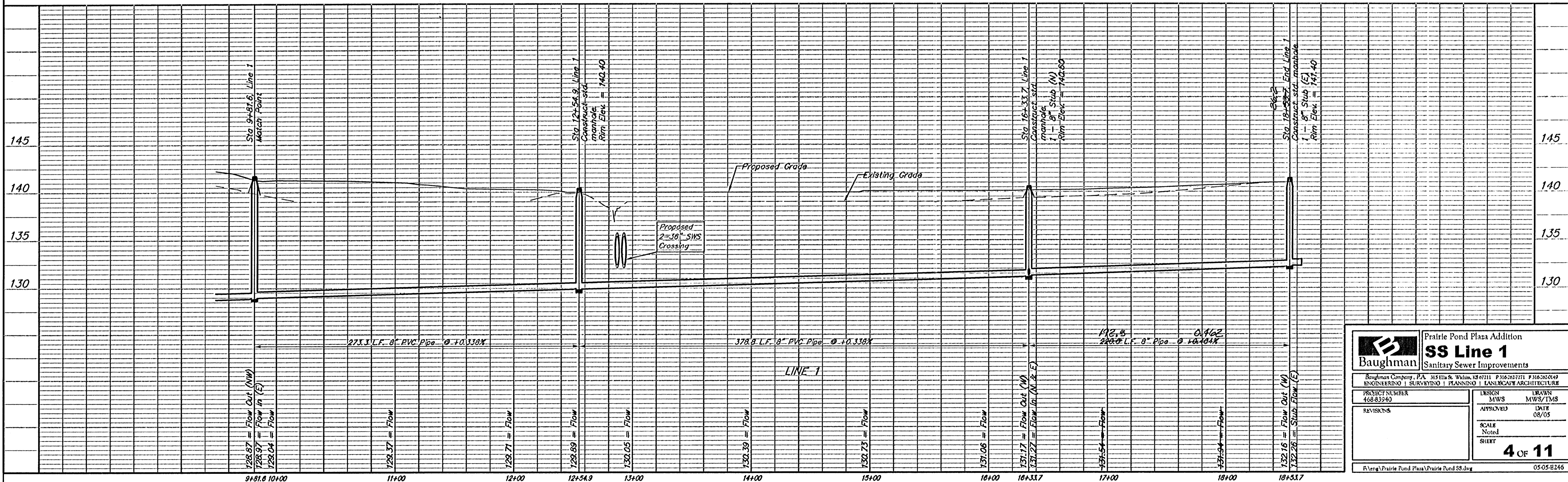
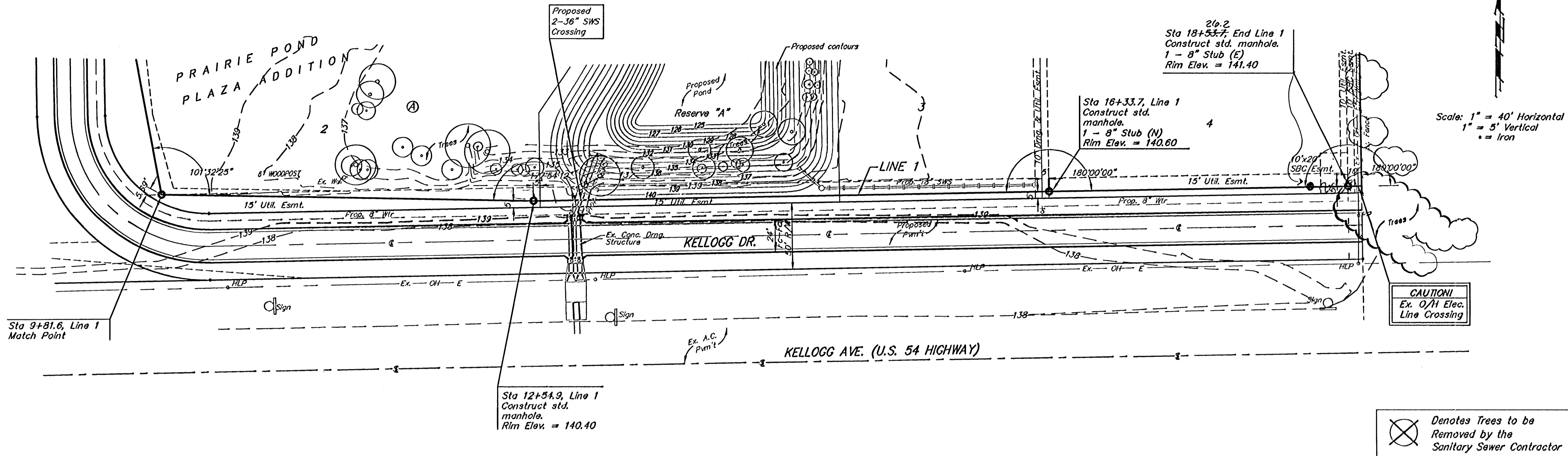


BENCHMARK:
 "□" cut on traffic signal
 light pole base, NW corner
 of Kellogg & 143rd Street
 East.
 Elev. = 1318.61 NGVD
 (131.21 City Datum)



		Prairie Pond Plaza Addition	
		SS Line 1	
Sanitary Sewer Improvements		Baughman Company, P.A. 315 Elm & Walnut, 13107111 P 314-332-7171 F 314-332-3149 ENGINEERING SURVEYING PLANNING LANDSCAPE ARCHITECTURE	
PROJECT NUMBER 468-83240	DESIGN MWS	DRAWN MWS/TMS	DATE 08/05
REVISIONS	APPROVED	SCALE Noted	SHEET
4 OF 11			
F:\Veng\Prairie Pond Plaza\Prairie Pond SS.dwg			05-05-B246